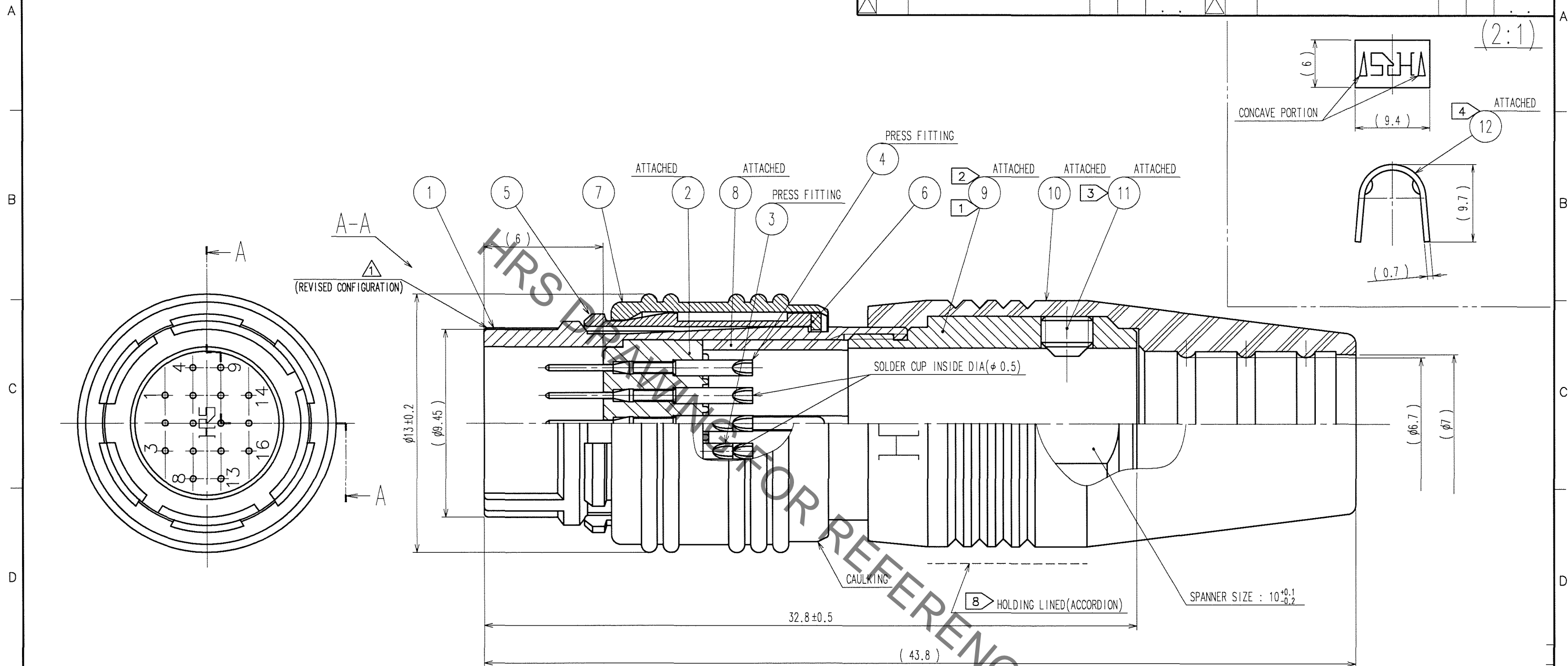






	COUNT	DESCRIPTION OF REVISIONS	BY	CHKD	DATE		COUNT	DESCRIPTION OF REVISIONS	BY	CHKD	DATE
▲	1	DIS-C-000627	T.K	E.K	07.05.25	▲					. .
▲					. .	▲					. .
▲					. .	▲					. .



- NOTES
- 1 THREAD PORTION OF REF. No. ⑨ IS APPLIED WITH PRECOATING TO PREVENT LOOSENESS.
HOWEVER, THE ADHESIVE EFFECTIVENESS IS DECREASED WHEN REUSED.
THEREFORE, THREAD PORTION IS RECOMMENDED TO COAT WITH LOCTITE 271 MANUFACTURED BY HENKEL JAPAN OR EQUIVALENT.
 - 2 THE RECOMMENDED TIGHTENING TORQUE OF REF. No. ⑨ TO BE 1 N·m.
 - 3 THE TIP OF REF. No. ⑪ SHALL BE FIXED TO THE CONCAVE PORTION WITH REF. No. ⑫
CLAMPED TO THE CABLE.
OPPOSITE SIDE DIMENSION OF A HEXAGON SOCKET OF REF. No. ⑪ IS 1.27mm.
AND THE RECOMMENDED TIGHTENING TORQUE OF REF. No. ⑪ TO BE 0.3 TO 0.4 N·m.
 - 4 MANUAL CRIMPING TOOL OF REF. No. ⑫ : HR10A-TC-02 (THE HOLE DIAMETER FOR CRIMPING: φ 7)
 - 5 ROTATION EXAMPLES OF REF. No. ① AND ⑨, ⑩ ARE SHOWN.
 - 6 OVERPLATING : GOLD 0.2 μm min.
UNDERPLATING : NICKEL 2 μm min.
 - 7 REFER TO THE TECHNICAL SPECIFICATION ATAD-C0140 FOR ASSEMBLY PROCEDURE.
 - 8 FOR SECURE CLICK SENSATION WHEN MATING, DO NOT HOLD REF. No. ⑦.
THIS PRODUCT SHALL BE MATED WITH HOLDING LINED (ACCORDION) AREA OF REF. No. ⑩.
INSERT THE PLUG UNTIL IT CLICKS.
FOR THE WITHDRAWAL, PULL THE CONNECTOR BY HOLDING REF. No. ⑦.
 - 9 THE CABLE PULL AND TWISTING STRENGTH AND OTHER CHARACTERISTICS MAY DIFFER, DEPENDING ON THE CABLE STRUCTURE.
PLEASE CONFIRM BEFORE THE USE.

6	BRASS	NICKEL PLATING	12	BRASS	
5	PHOSPHOR BRONZE	NICKEL PLATING	11	STEEL	NICKEL PLATING 1/2.6x0.45x2
4	PHOSPHOR BRONZE		10	ETHYLENE PROPYLENE RUBBER	(BLACK)
3	PHOSPHOR BRONZE		9	BRASS	NICKEL PLATING
2	POLYPHENYLENE SULFIDE	(BLACK) UL94V-0	8	POLYACETAL	(NATURAL)
1	ZINC ALLOY	MATTE FINISH NICKEL PLATING	7	BRASS	MATTE FINISH NICKEL PLATING
NO.	MATERIAL	FINISH, REMARKS	NO.	MATERIAL	FINISH, REMARKS

CODE NO. (OLD) CL		DRAWN M. SATO '06 09 22	DESIGNED Y. YAMADA '06 09 22	CHECKED /	APPROVED M. SATO '06 09 25	RELEASED .
		DRAWING NO. EDC3-115047		PART NO. HR25A-9P-16P		
SCALE 5 : 1		 HIROSE ELECTRIC CO., LTD		CODE NO. CL125-0605-6-00		1/1
UNITS mm						