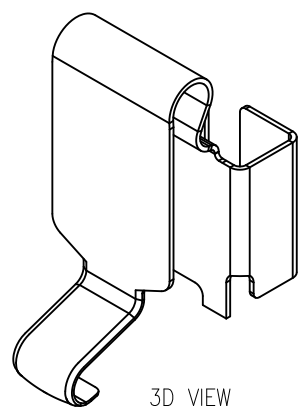
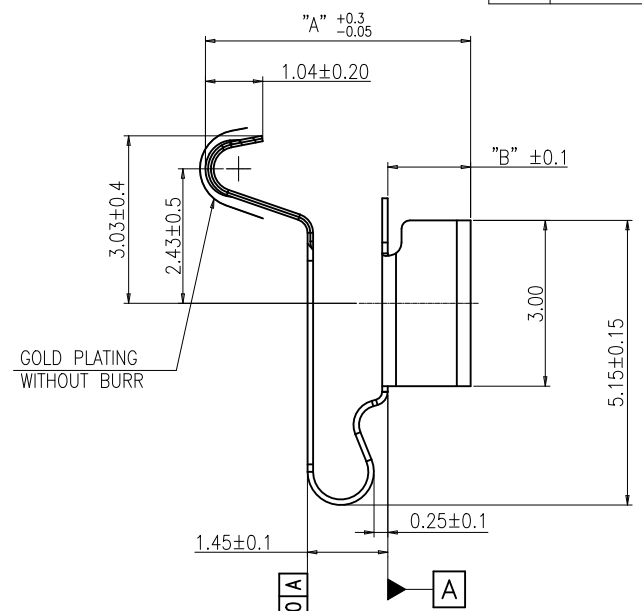
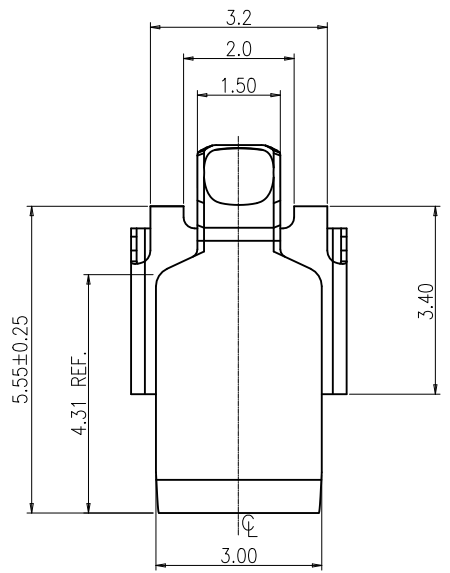


REV.	ECR/ECN No.	DESCRIPTION	DRAWN/DATE	CHECKED/DATE	APPROVED/DATE
C	ECN2020073	Added H7.5 specification	Staven 2020-09-03	Staven 2020-09-03	Biao 2020-09-03
D	ECN2022112	UPDATE CPK SYMBOLS	Abner 2022-07-20	Staven 2022-07-20	Sam 2022-07-20



- NOTES:
1. MATERIAL: C5210-EH T=0.10±0.01mm;
 2. BURR 0.03mm MAX.
 3. PLATING: Au 2u" SURFACE PLATING OVER CONTACT AREAS, Au 2u" SURFACE PLATING OVER SOLDER AREAS, Ni 40-120u" UNDER PLATING OVER ALL.
 4. ALL MATERIALS COMPLY WITH ROHS MANAGEMENT;
 5. WITH "▼" MUST BE CPK CONTROL.

TABLE:

PART NUMBER	A	B
Z016-4F7L1-11000-E000	4.80	1.50
Z02B-4F7L1-11000-E000	5.20	1.90
Z02D-4F7L1-11000-E000	7.50	4.20

A

B

C

D

A

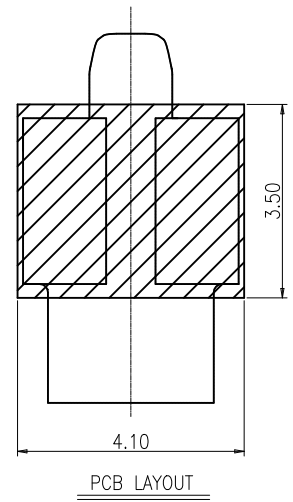
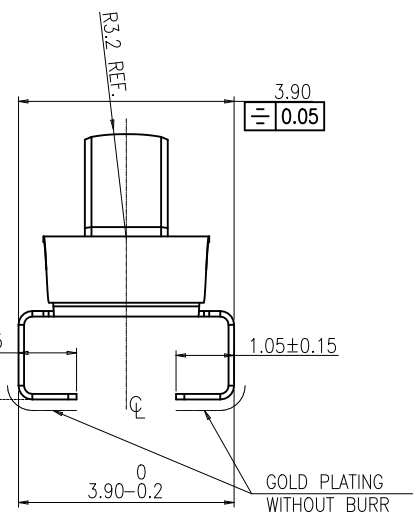
B

C

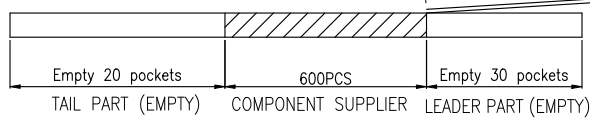
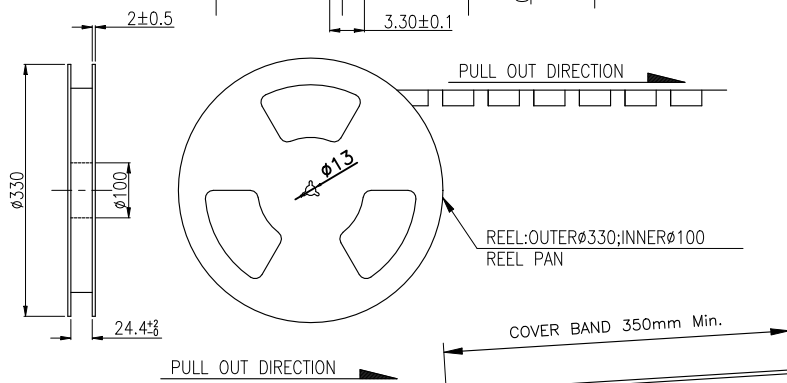
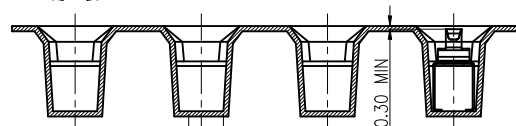
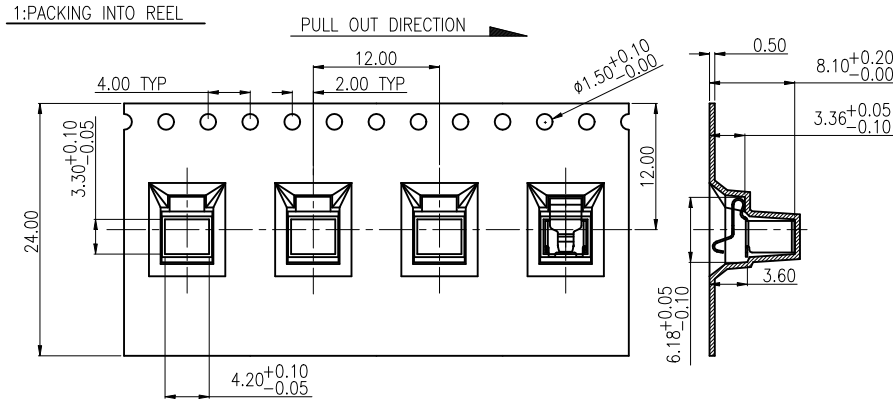
D



This document is the property of and embodies CONFIDENTIAL and PROPRIETARY information of AOR. No part of the information shown on this document may be used in any way or disclosed to others without the written consent of AOR. © 2019 AOR



UNLESS OTHERWISE SPECIFIED TOLERANCES		ANGLE OF PROJECTION		 Amphenol Aorora Technology (Huizhou) Co.,Ltd			
X.	±0.30	X. *	± 5'				
X.X	±0.25	X.X *	± 4'	DOC TYP	Customer Drw		TITLE:
X.XX	±0.20	X.XX *	± 3'	DRAWN	Abner	H4.8/H5.2/7.5 SPRING T=0.1mm	
X.XXX	±0.15	X.XXX *	± 2'	DATE	2022-07-20	SIZE	A4
LINEAR DIMS		ANGLES DIMS		DESIGN	Abner	PART NUMBER:	Z0**-4F7L1-11000-E000
DWG NO.:	A-S0490			DATE	2022-07-20	REV.	D
MATERIAL	SEE NOTES			CHECKED	Staven	SCALE	1:1
FINISHED	SEE NOTES			DATE	2022-07-20	UNIT	mm
				APPROVED	Sam	SHEET	1 OF 1
				DATE	2022-07-20		



NOTES:

- MATERIAL:
 - CARRY TAPE:HIPS,T=0.50mm,COLOR:TRANSPARENT.
 - REEL:HIPS,BLUE.
 - SHIM:PE,CLEAR.
- PRIMARY PACKING:600PCS/REEL.
- SECONDARY PACKING:10 REELS/CARTON
("TOTAL"=10*600/CARTON).
- PEELING RESISTANCE: 0.1N~0.7N(10~70gf);
PEELING ANGLE: 165°~180°;
PEELING SPEED: 300mm/minutes.

REV.	ECR/ECN No.	DESCRIPTION	DRAWN/DATE	CHECKED/DATE	APPROVED/DATE
F	ECN20200073	Added H7.5 specification	Staven 2020-09-03	Staven 2020-09-03	Biao 2020-09-03

2:PACKING INTO OUTER BOX

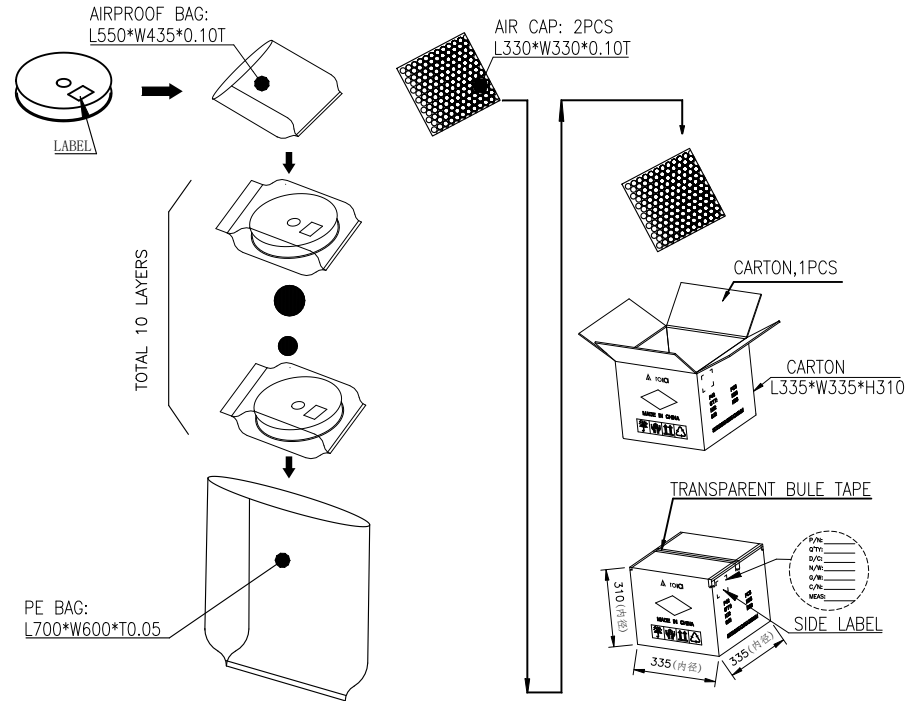


TABLE:

PART NO.	PCS/REEL	N REEL/BOX (TOL PCS)
Z00C-4G7L1-11000	600	10REEL/BOX (6000pcs)
Z01Q-4G7L1-11000-E000		
Z02D-4F7L1-11000-E000		

UNLESS OTHERWISE SPECIFIED TOLERANCES				ANGLE OF PROJECTION		Amphenol AORORA		
X.	±0.30	X. '	± 5'			Amphenol Aorora Technology (Huizhou) Co.,Ltd		
X.X	±0.25	X.X '	± 4'					
X.XX	±0.20	X.XX '	± 3'	DOC TYPE		TITLE:		
X.XXX	±0.15	X.XXX '	± 2'	PACKING Drw		H7.5 SPRING—PACKING		
LINEAR DIMS		ANGLES DIMS		DRAWN	DATE	Staven	SIZE	
DWG NO.:	A-H0099		DESIGN	DATE	Staven	PART NUMBER:		
MATERIAL	SEE NOTES		CHECKED	DATE	Biao			SEE TABLE
FINISHED	SEE NOTES		APPROVED	DATE	Biao			
				2020-09-03	2020-09-03		F	
SCALE	1:1	UNIT : mm	SHEET	1	OF	1		