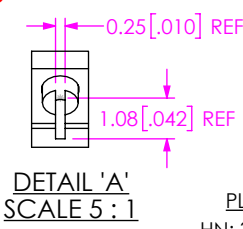
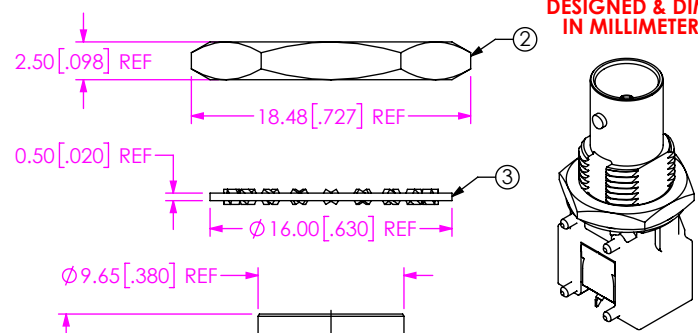


DO NOT SCALE FROM THIS PRINT

DESIGNED & DIMENSIONED IN MILLIMETERS [INCHES]

BNC7T-J-P-XX-RA-BMXD



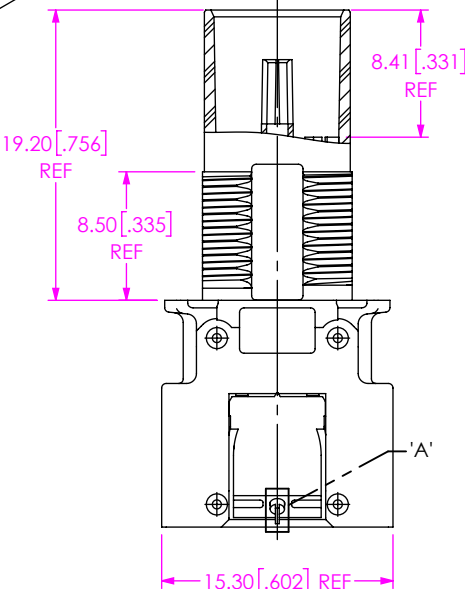
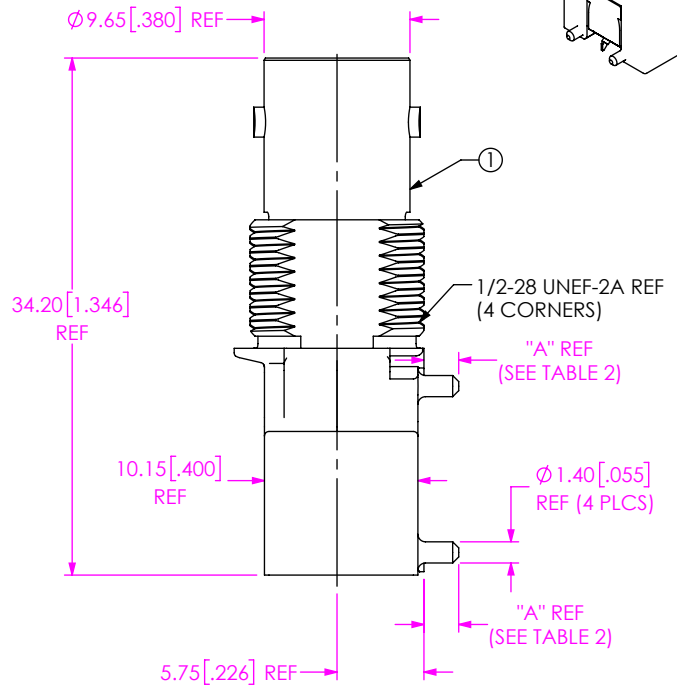
GENDER
-J: JACK

TYPE
-P: PCB

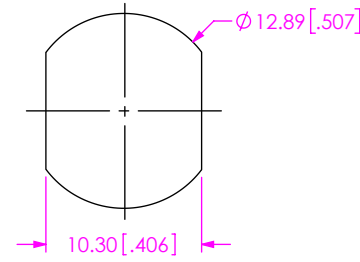
TERMINATION
-BM1D: .062" BOARD, DIE CAST BULKHEAD THROUGH HOLE & MIXED TECHNOLOGY
-BM2D: .125" BOARD, DIE CAST BULKHEAD THROUGH HOLE & MIXED TECHNOLOGY

ORIENTATION
-RA: RIGHT ANGLE

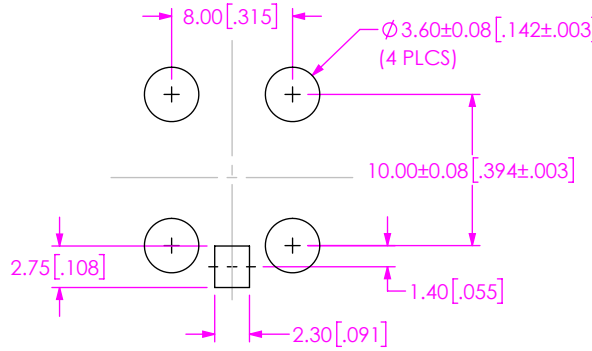
PLATING SPECIFICATION
-HN: 30μ" GOLD CENTER CONTACT
-GN: 10μ" GOLD CENTER CONTACT



RECOMMENDED MOUNTING HOLE
5.50 [0.217] MAX. PANEL THICKNESS



RECOMMENDED STENCIL LAYOUT
THICKNESS: 0.152MM [0.006"]



RECOMMENDED PCB LAYOUT
(SEE NOTE 3)

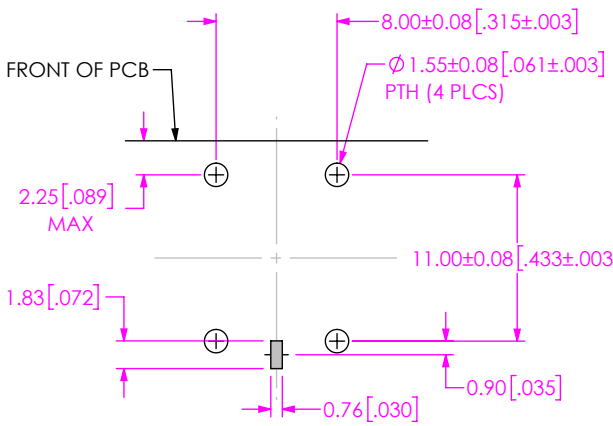


TABLE 1

ITEM	COMPONENT	-HN	-GN
1	SUB ASSEMBLY	SUB-BNC7T-J-P-XX-RA-BMXD (SEE TABLE 2)	
2	NUT	BTNC-NUT-001-N	
3	LOCK WASHER	BTNC-LWAS-001-N	

TABLE 2

STYLE	-HN	-GN	"A"
-BM1D	SUB-BNC7T-J-P-HN-RA-BM1D	SUB-BNC7T-J-P-GN-RA-BM1D	2.30 [0.091]
-BM2D	SUB-BNC7T-J-P-HN-RA-BM2D	SUB-BNC7T-J-P-GN-RA-BM2D	4.30 [0.169]

- NOTES:
- ⊙ REPRESENTS A CRITICAL DIMENSION.
 - SEE CO-RF-WI-3040-M RF PACKAGING STANDARD FOR PACKAGING INSTRUCTIONS. PRODUCT TO BE PACKAGED IN TRAY (TY-BNC005) WITH COVER (TY-BNC005). NUT AND WASHER TO BE BULK PACKAGED SEPARATELY.
 - THIS IS A GENERAL FOOTPRINT AND IS NOT OPTIMIZED FOR ELECTRICAL PERFORMANCE. CONTACT SIG@SAMTEC.COM FOR ASSISTANCE WITH ELECTRICAL LAYOUT.

PROPRIETARY NOTE
THIS DOCUMENT CONTAINS CONFIDENTIAL AND PROPRIETARY INFORMATION AND ALL DESIGN, MANUFACTURING, REPRODUCTION, USE, PATENT RIGHTS AND SALES RIGHTS ARE EXPRESSLY RESERVED BY SAMTEC, INC. THIS DOCUMENT SHALL NOT BE DISCLOSED, IN WHOLE OR PART, TO ANY UNAUTHORIZED PERSON OR ENTITY NOR REPRODUCED, TRANSFERRED OR INCORPORATED IN ANY OTHER PROJECT IN ANY MANNER WITHOUT THE EXPRESS WRITTEN CONSENT OF SAMTEC, INC.

MATERIAL: DO NOT SCALE DRAWING
SHELL: ZINC SHEET SCALE: 2:1
NUT, WASHER: BRASS
CONTACT: COPPER ALLOY
INSULATOR: LCP

520 PARK EAST BLVD, NEW ALBANY, IN 47150
PHONE: 812-944-6733 FAX: 812-948-5047
e-Mail info@SAMTEC.com code 53322

DESCRIPTION:
75 OHM, BNC RA JACK ASSEMBLY

DWG. NO.
BNC7T-J-P-XX-RA-BMXD

BY: SHERRY W 11/10/2017 SHEET 1 OF 1