

142B

PRINTED CIRCUIT BOARD AUDIO TRANSFORMER IMPEDANCE MATCHING

Pin type, P.C. board mount, suitable for matching, isolation, pulse, interstage and driver applications.

Secondary may be used as primary and primary as secondary.

Power level: 100mw @ 200 Hz. to 15 KHz.

-Freq. range @ +10 dbm is 200 Hz. to 15 KHz. +/- 1.0db

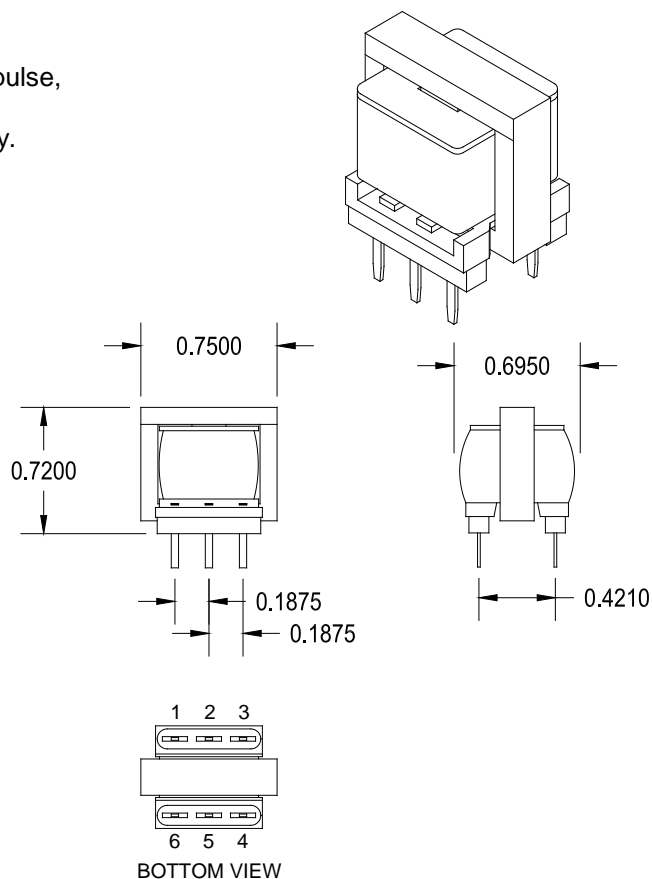
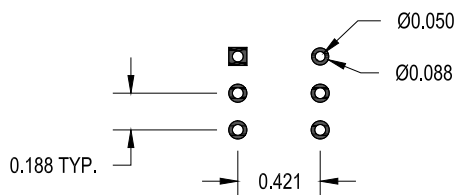
-Freq. range @ +20 dbm is 200 Hz. to 15 KHz. +/- 1.0db

-Freq. measurements with no D.C. saturation.

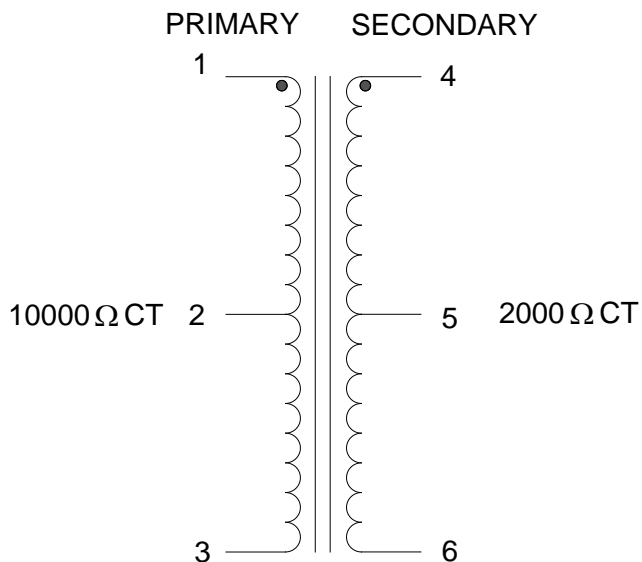
ELECTRICAL SPECIFICATIONS

Characteristic	Typical
Input Impedance	10000 Ω CT
Output Impedance	2000 Ω CT
Output Power	0.100 Watts
Pri DC Unbalanced	4.0 mA
DCR	
Primary 1-3	720 Ω \pm 20%
Secondary 4-6	210 Ω \pm 20%
Inductance	@ 1.0 kHz, 1.0 V OC
Primary 1-3	14.0H
Secondary 4-6	3.0H
Leakage Inductance	1.50H
Impedance	@ 1.0 kHz, 1.0 V OC
Primary 1-3	68K Ω
Secondary 4-6	15K Ω
Frequency Response	\pm 1.0db from 200Hz to 15KHz
Turns ratio	1:0.447
Dielectric Strength	1500 Vrms
Storage Temp	-40 To 105°C**
Operating Temp	-40 To 85°C**

PCB LAYOUT

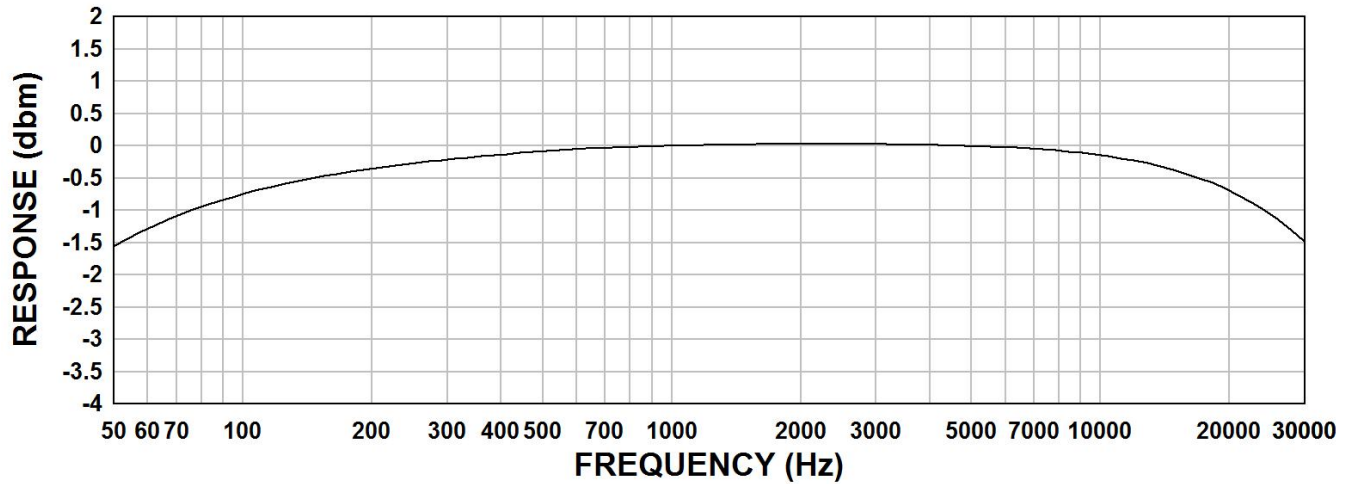


SCHEMATIC DIAGRAM



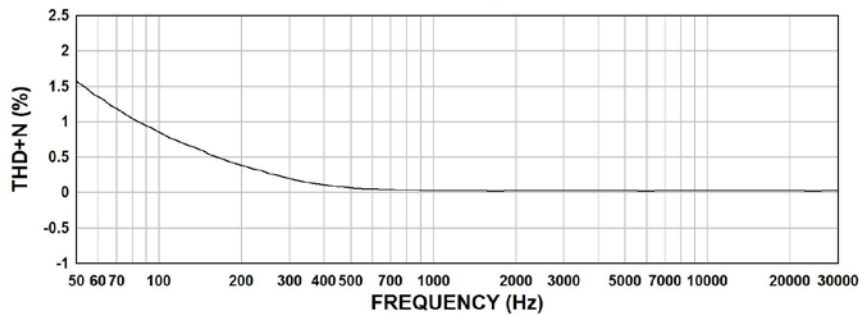
142B FREQUENCY RESPONSE

10000 OHM CT TO 2000 OHM CT
INPUT SIGNAL 1Vp-p



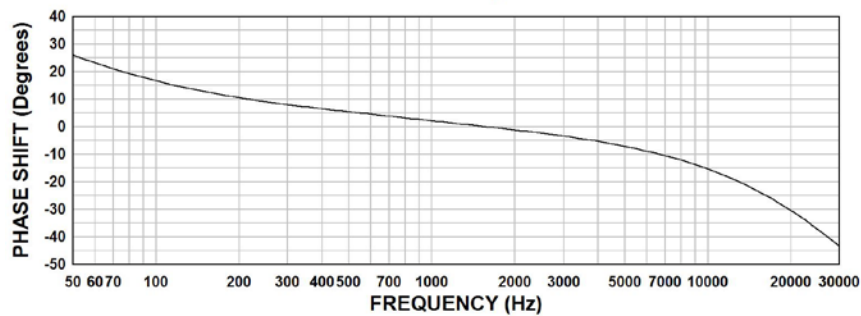
142B THD+N

10000 OHM CT TO 2000 OHM CT
INPUT SIGNAL 1 Vp-p

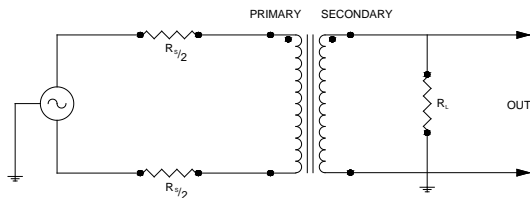


142B PHASE SHIFT

10000 OHM CT TO 2000 OHM CT
INPUT SIGNAL 1Vp-p



TYPICAL TEST CIRCUIT



Measurement instruments
Hp4192a impedance analyzer
Hp3456a DVM
Keithley 2002 DVM
D scope series iii audio analyzer

** Variations in the transformer materials and environmental conditions may reduce the workable temperature range.

This drawing and the information in it is the property of Hammond Manufacturing. It may not be reproduced, transmitted or used in any manner whatsoever without the written permission of Hammond Manufacturing. Data subject to change without notice.