

117K32

25 V LINE AUDIO TRANSFORMER

- Couple 8ohm speakers to 25volt line outputs of amplifiers.
- Up to 5 power tap levels available
- Primary taps marked in watts (no calculation necessary), to match speaker power.
- Frequency response 100Hz. to 9Khz. (+1/-2dB reference @1 KHz.)
- Distortion is less than 2.0% @ 100 Hz. at maximum power.
- All models have solder lugs, also suitable for slip on jumper connections.
- Total power requirements of speakers should not exceed the rated power of each transformer or rated power of the amplifier.

ELECTRICAL SPECIFICATIONS

Characteristics	Typical
System Voltage	25V
Power Rating	32 Watts
Insertion Loss	<2dB
DCR	
COM - 2 W	7.5Ω TYP
Input	0.28Ω TYP
INDUCTANCE/IMPEDANCE	
	@1.0 KHz, 1V OC
COM - 2W	332.5mH / 1.82KΩ
COM - 4W	179.15mH / 949.2Ω
COM - 8W	96.78mH / 498.4Ω
COM - 16W	53.32mH / 266.6Ω
COM - 32W	27.81mH / 135.45Ω
Input	11.92mH / 57.12Ω
LEAKAGE INDUCTANCE	
	@1.0 KHz, 1V SC
2W/ 32W	6.36mH / 1.18mH
Dielectric Strength	
	500VRMS
Temperature Range	
	-40 To 105°C

TEST CONDITIONS

Measurement instruments:

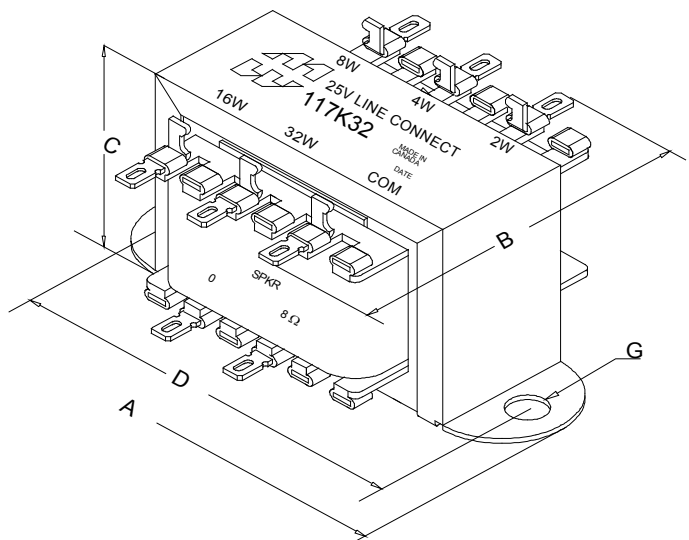
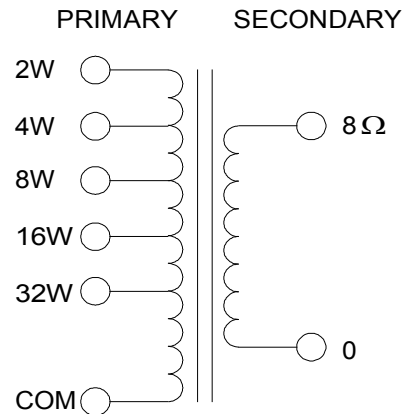
D scope series iii audio analyzer
Wayne Kerr 3255B with a 3265B

Keithley 2010 DVM

Hp4192a impedance analyzer

* All graphs input level 27dBm @1.0KHz reference.

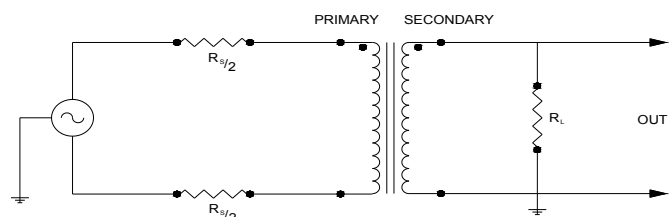
**The results are typical and are subject to normal manufacturing and electrical tolerances.



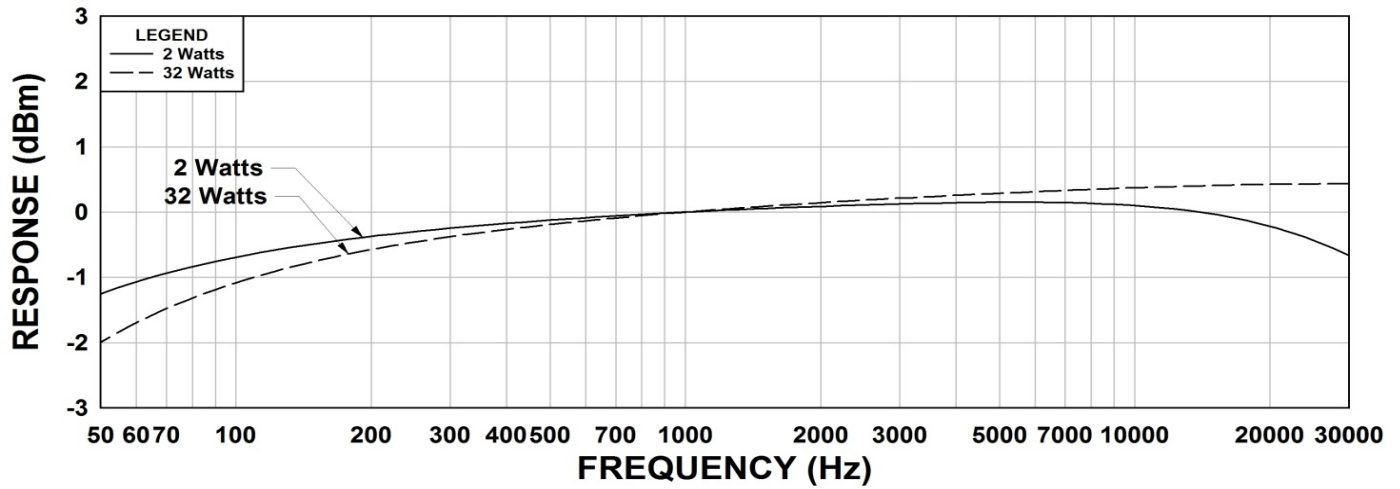
Dimensions

A	4.0" ±0.063	D	3.563" ±0.063
B	2.250" REF	G	0.187" ±0.015
C	2.630 MAX		

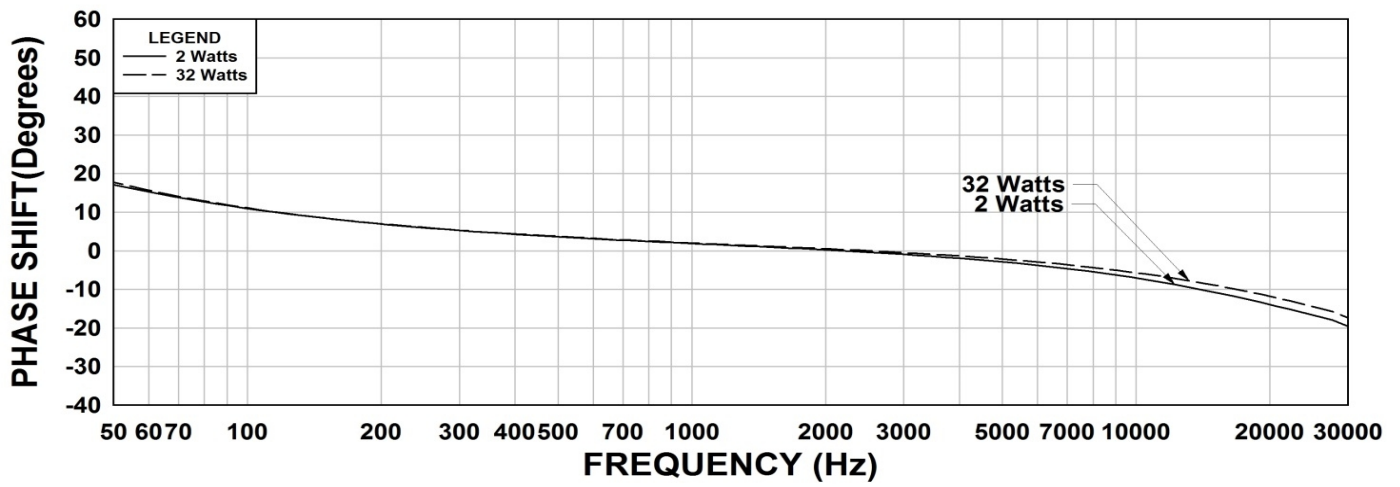
TYPICAL TEST CIRCUIT



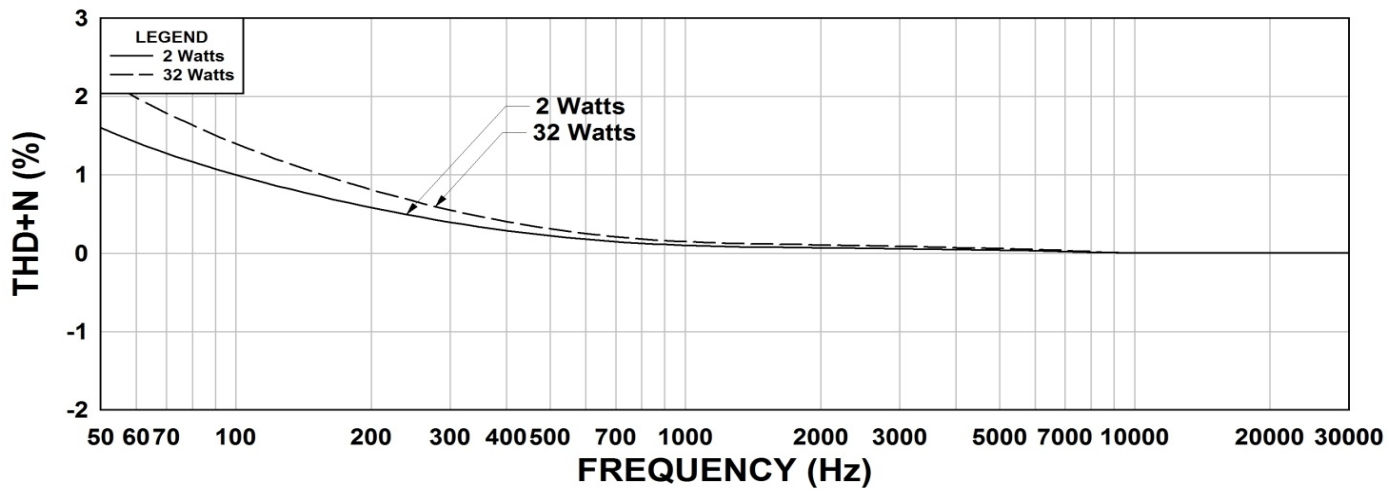
117K32 Frequency Response 2W & 32W



117K32 Phase Shift 2W & 32W



117K32 THD+N 2W & 32W



This drawing and the information in it is the property of Hammond Manufacturing. It may not be reproduced, transmitted or used in any manner whatsoever without the written permission of Hammond Manufacturing. Data subject to change without notice.