

117G16

70 V LINE AUDIO TRANSFORMER

- Couple 16ohm speakers to 70volt line outputs of amplifiers.
- Up to 5 power tap levels available
- Primary taps marked in watts (no calculation necessary), to match speaker power.
- Frequency response 100Hz. to 10Khz. (± 2 db. reference @1 KHz.)
- Distortion is less than 3% @ 100 Hz. at maximum power.
- All models have solder lugs, also suitable for slip on jumper connections.
- Total power requirements of speakers should not exceed the rated power of each transformer or rated power of the amplifier.

ELECTRICAL SPECIFICATIONS

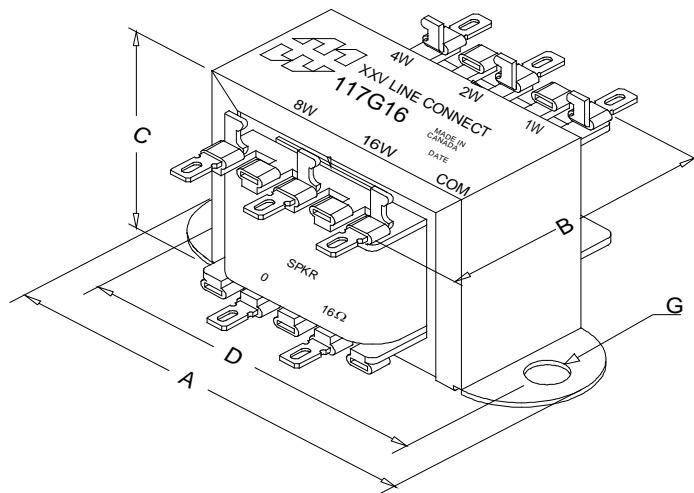
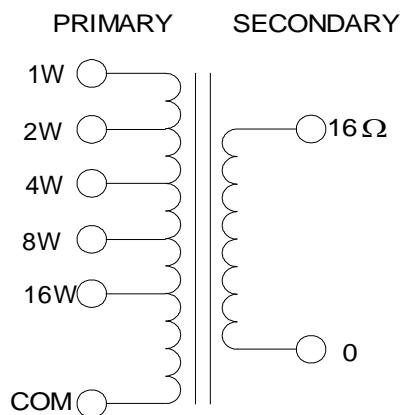
Characteristics	Typical
System Voltage	70V
Power Rating	16 Watts
Insertion Loss	<2dB
DCR	
COM - 1/2 W	26.4 Ω TYP
Input	0.75 Ω TYP
INDUCTANCE/IMPEDANCE	
	@1.0 KHz, 1V OC
COM - 1W	1.83H / 10.48K Ω
COM-2W	993mH / 5.55K Ω
COM-4W	549mH / 2.96K Ω
COM-8W	305mH / 1.58K Ω
COM-16W	172mH / 849 Ω
Input	12.9mH / 55.2 Ω
LEAKAGE INDUCTANCE	
	@1.0 KHz, 1V SC
1W/ 16W	253mH / 15.8mH
Dielectric Strength	
	1500VRMS
Temperature Range	
	-40 To 105°C

TEST CONDITIONS:

Measurement instruments:
 Hp4192a impedance analyzer Keithley 2002 DVM
 D scope series iii audio analyzer Hp3456a DVM

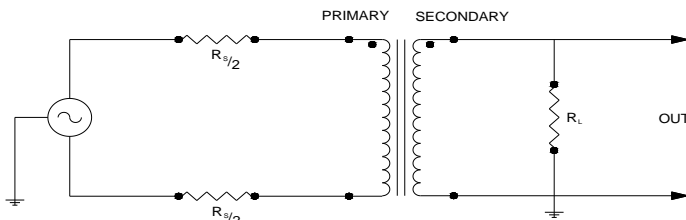
* All graphs input level 27dBm.

**The results are typical and are subject to normal manufacturing and electrical tolerances.

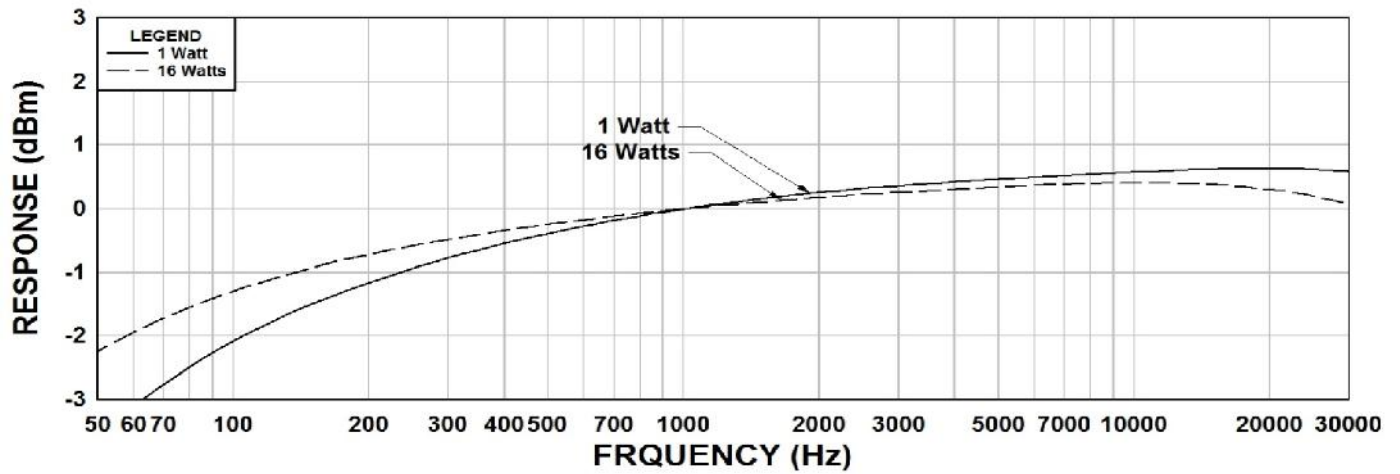


Dimensions			
A	3.688" ± 0.063	D	3.125" ± 0.063
B	1.945" ± 0.125	G	0.187" ± 0.015
C	2.310" MAX		

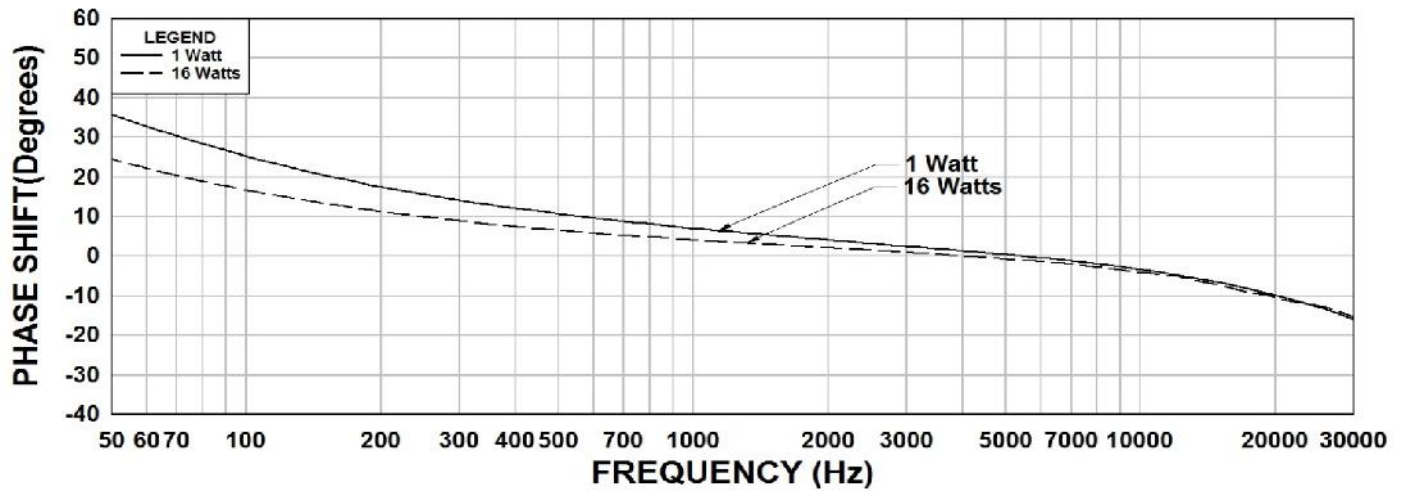
TYPICAL TEST CIRCUIT



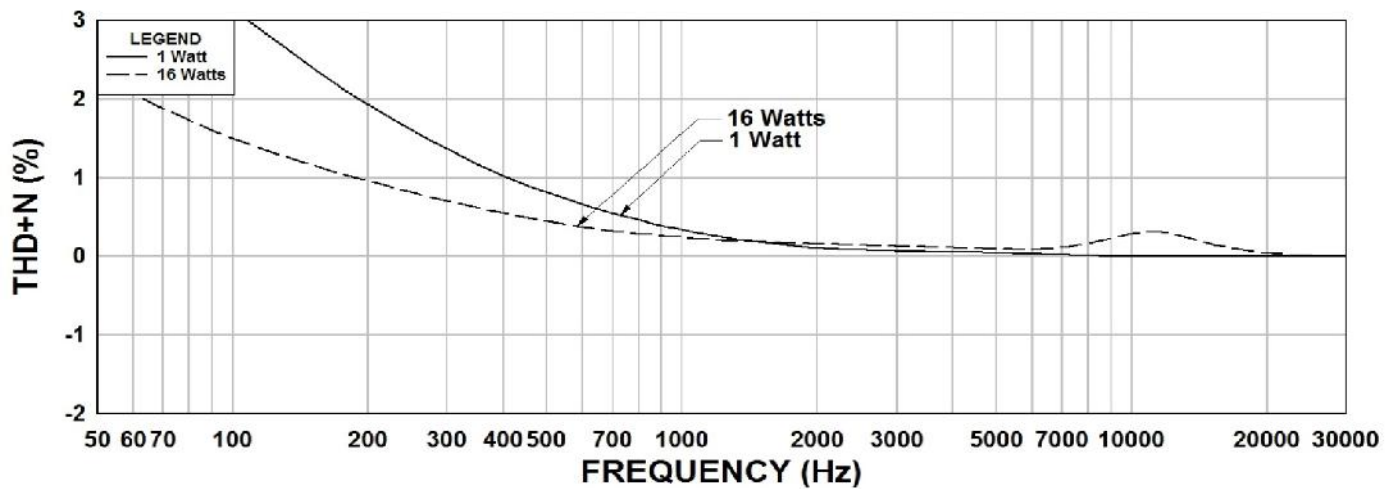
117G16 Frequency Response 1W & 16W



117G16 Phase Shift 1W & 16W



117G16 THD+N 1W & 16W



This drawing and the information in it is the property of Hammond Manufacturing. It may not be reproduced, transmitted or used in any manner whatsoever without the written permission of Hammond Manufacturing. Data subject to change without notice.