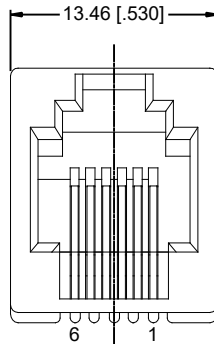
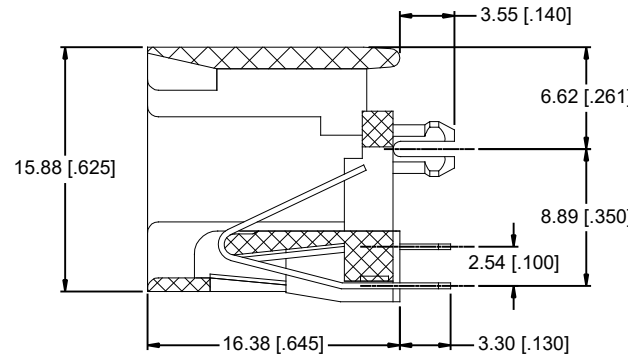


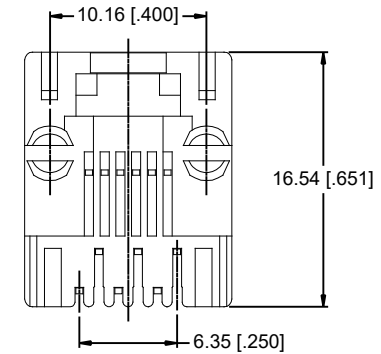
REVISIONS			
REV	DESCRIPTION, ECN, EAR NO.	DATE	APP'D
A	NEW PROPOSAL	NOV30/22	KELVIN



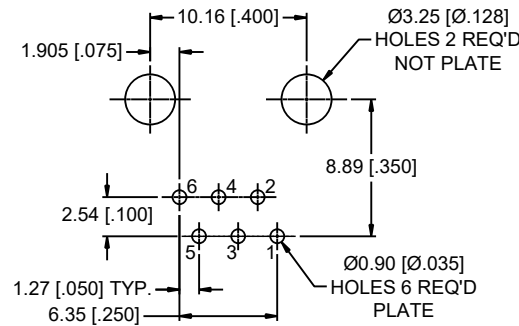
FRONT VIEW



SIDE VIEW



BACK VIEW



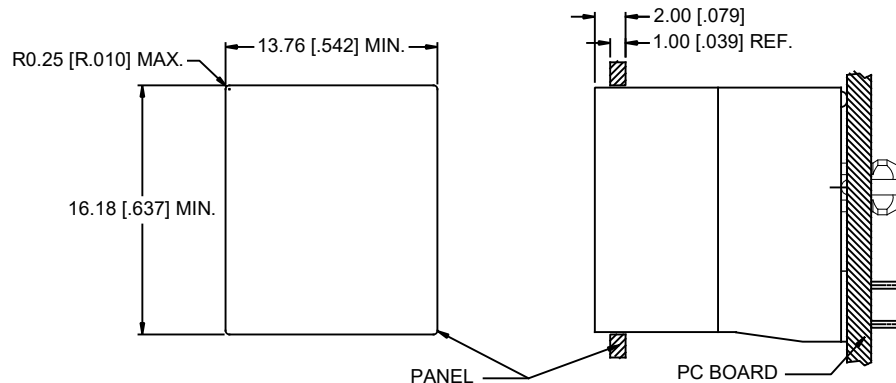
RECOMMENDED P.C.B LAYOUT
(TOLERANCE: ± 0.05 [0.002])
(PCB THICKNESS: 1.57 [0.062])
(COMPONENT SIDE OF PC BOARD)



NOTES:

- MATERIALS:**
CONTACTS: PHOSPHOR BRONZE, 0.35MM THICKNESS,
PLATING: 50 μ [1.27 MICRONS] MIN. GOLD PLATING
ON MATING SURFACE,
30 μ [0.762 MICRONS] MIN. NICKEL OVERALL.
HOUSING: HIGH TEMPERATURE THERMOPLASTIC, FLAMMABILITY RATING UL 94V-0
COLOR - BLACK.
- MECHANICAL:**
MATING FORCE: 5.0 LBS MAXIMUM
- ELECTRICAL:**
CONTACT RESISTANCE: 20 MILLIOHMS MAXIMUM
INSULATION RESISTANCE: 500 MEGOHMS MINIMUM
CURRENT RATING: 1.5 AMPS
VOLTAGE RATING: 125 VOLTS AC
- ENVIRONMENTAL:**
STORAGE TEMPERATURE: -40°C TO +85°C
- RECOMMENDED SOLDERING TEMPERATURE:**
WAVE SOLDERING PEAKED AT 260°C FOR 5 TO 8 SECONDS,
OR REFLOW SOLDERING PEAKED AT 260°C FOR 10 SECONDS MAXIMUM.

AMPHENOL PART NUMBER: RJE08-166-041M-H



RECOMMENDED PANEL CUTOUT

THIS DOCUMENT CONTAINS PROPRIETARY INFORMATION AND SUCH INFORMATION MAY NOT BE DISCLOSED TO OTHERS FOR ANY PURPOSE OR USED FOR MANUFACTURING PURPOSES WITHOUT WRITTEN PERMISSION FROM AMPHENOL CANADA CORP.

UNLESS SPECIFIED OTHERWISE	DRAWN RONNIE.C	NOV30/22	Amphenol Canada Corp. Commercial Products		
PRIMARY UNITS MILLIMETERS	CHECKED KELVIN.T	NOV30/22			
SECONDARY INCHES	M.E. APP'D		SINGLE PORT, VERTICAL MODULAR JACK, 6 POSITION, 6 CONTACTS, UNSHIELD -RoHS COMPLIANT		
REFERENCE IN PARENTHESES	Q.A. APP'D				
GENERAL TOLERANCES	DWG APP'D		DWG NO. P-RJE08-166-041M-H		
1 DECIMAL PLACE ± 0.30	ENG. REL. NO.				
2 DECIMAL PLACES ± 0.20	REF.		REV A		
3 DECIMAL PLACES ± 0.13					
ANGULAR DEGREES $\pm 2.0^\circ$	THIRD ANGLE PROJECTION	DO NOT SCALE DRAWING	CODE ID NO. 03554	DWG SIZE X	SCALE N/A
			SHEET 1	OF 1	