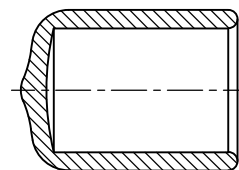
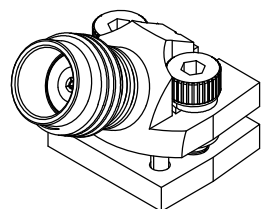
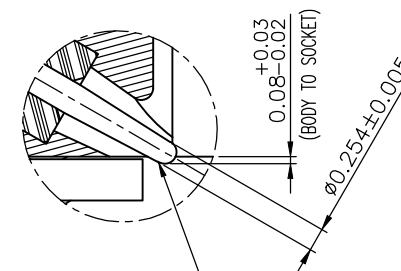
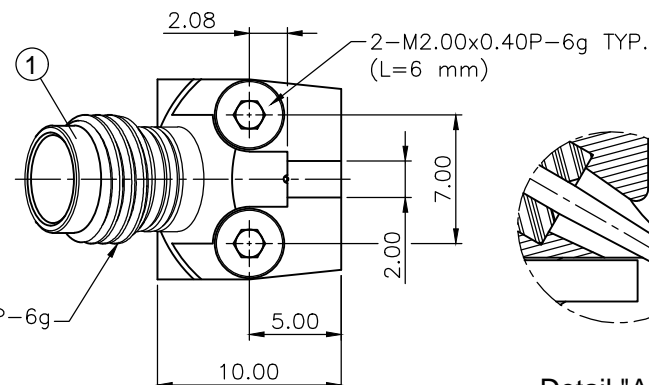


PART NUMBER	ITEM (1)					ITEM (2)	ITEM (3)	ITEM (4)	ITEM (5)
	BODY	SOCKET	INSULATOR 1	INSULATOR 1	PROTECTION CAP	LOCKING BLOCK	SCREW	LOCKING WASHER	GASKET
147-0791-301	BRASS GOLD PLATING	BERYLLIUM COPPER GOLD PLATING	PCTFE	PTFE	SOFT PVC	BRASS GOLD PLATING	STAINLESS STEEL PASSIVATED	STAINLESS STEEL PASSIVATED	SILICON

REV	ECO	DATE
1	INITIAL RELEASE	01/30/2023



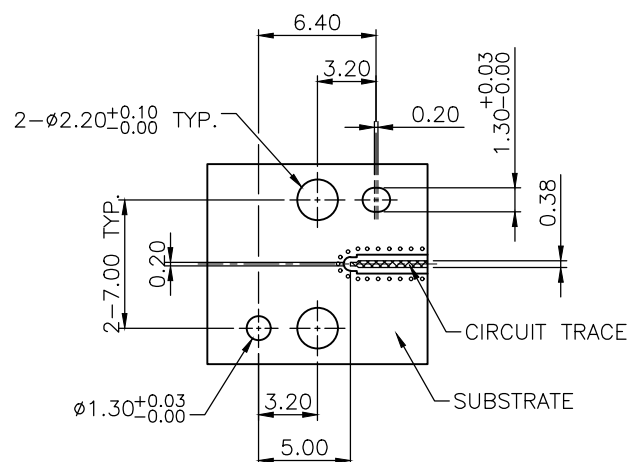
PROTECTION CAP
BLACK COLOR
M7.00x0.75P-6g



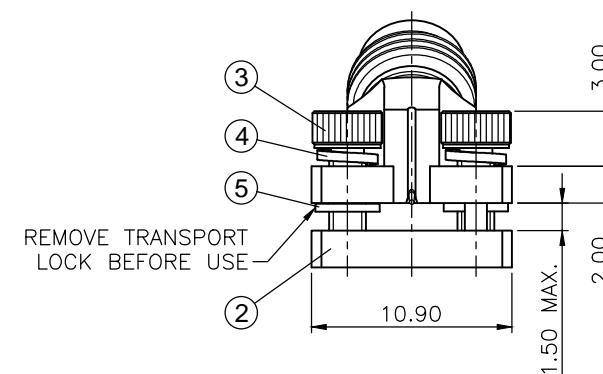
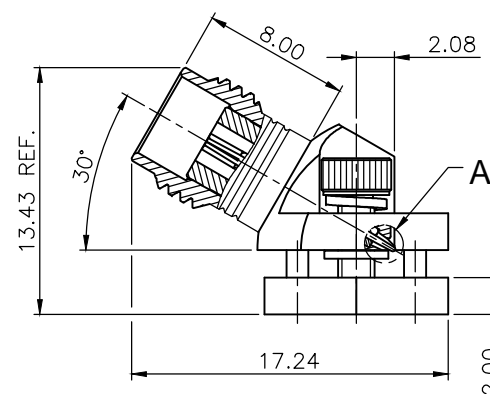
Detail "A"

Scale 5:1

CONNECTED TO PCB TRACE



RECOMMENDED P.C.B. LAYOUT



SPECIFICATION:

IMPEDANCE: 50 OHMS

FREQUENCY RANGE: DC-50 GHz

INSULATION RESISTANCE: 5000 MOHM MIN

CONTACT RESISTANCE:

CENTER CONTACT: 1.5 MILLIOHM MAX

OUTER CONTACT: 0.8 MILLIOHM MAX

DIELECTRIC WITHSTANDING VOLTAGE: 500 VRMS MIN AT SEA LEVEL

VOLTAGE STANDING WAVE RATION (VSWR): 1.30 MAX @ 50 GHz

WORKING VOLTAGE: 400 VRMS MAX AT SEA LEVEL

INERTION LOSS: 0.85 dB MAX @ 50 GHz

DURABILITY: 500 CYCLES MIN

TEMPERATURE RANGE: -55 TO +85 DEG C

<p>This PROPRIETARY Document is property of Cinch Connectivity Solutions. It is confidential and contains trade secrets and other confidential information. It is to be controlled and its use is limited to the specific project for which it was created. It is not to be distributed, copied, or otherwise used without the express written permission of Cinch Connectivity Solutions.</p> <p>INTERPRET DRAWING IN ACCORDANCE WITH ASME Y14.5-2009</p>	Model No.	147-0791-301/310	Johnson	
	RoHS	COMPLIANT	Cage Code	Title: 2.4mm JACK, SOLDERLESS PCB MOUNT, 30 DEGREE
	3RD ANGLE PROJECTION		Drawn by:	147-0791-301/310
	XX ±.10 .XXX ±.05 ANGLES ±2°	DATE: 01/30/2023	Size C	DO NOT SCALE DRAWING
			Workmanship Std.	NONE
			Sheet 1 of 1	Rev. 1