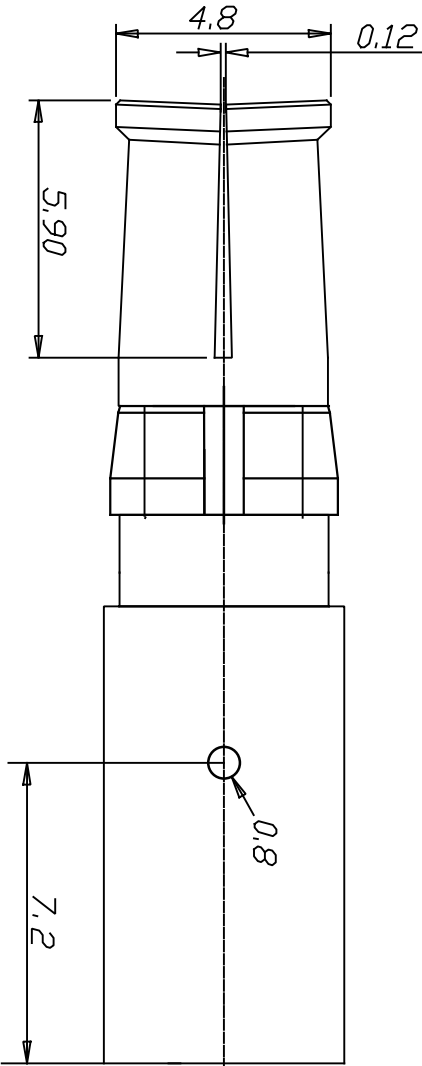
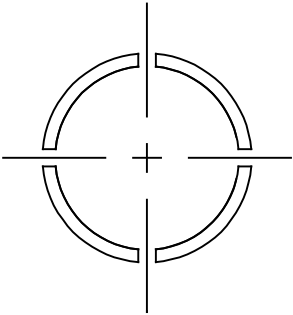
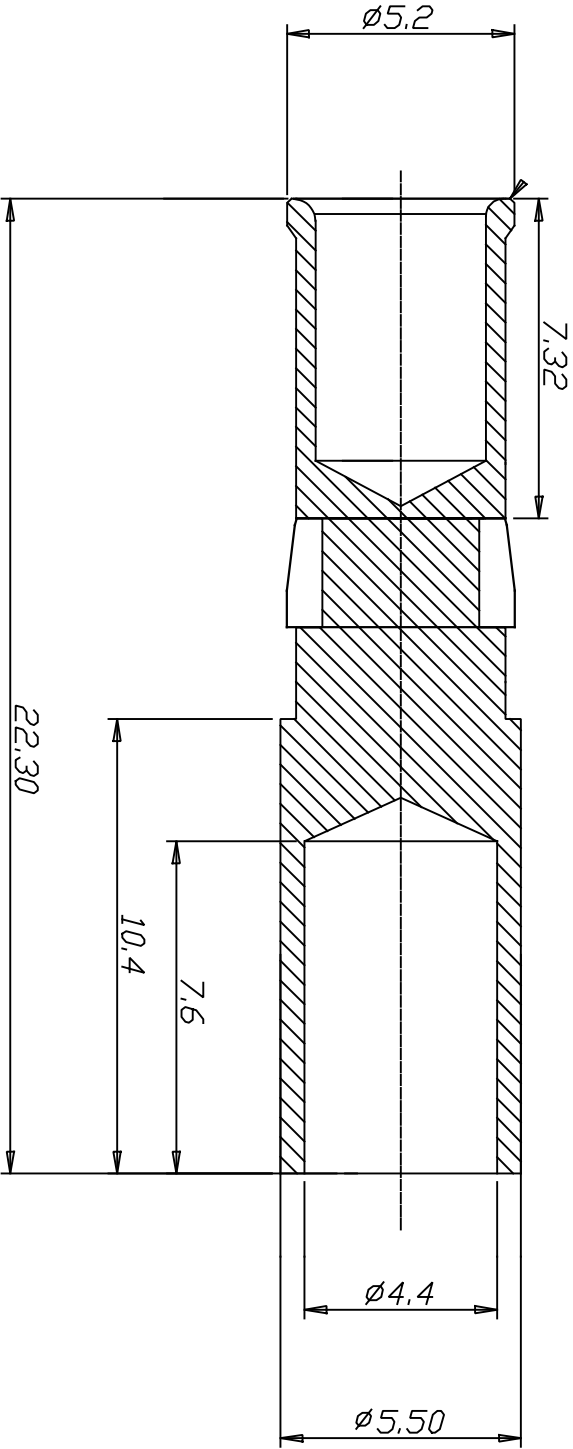
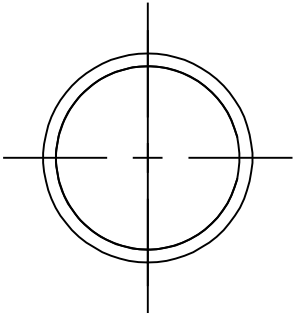


PART NUMBER : 8638PSC7506LF



Notes

1. The surface of the finished product must not have burrs, scratches.

Material & Finish

- 1.Contact Material : Copper Alloy
- 2.Plating :Silver Over Nickel (Lubed)
- 3.Clip :Thermoplastic

Refer GS-12-1670 for Technical & Mechanical Characteristics

Rohs Note

The "LF" product meet European Union Directives & regulation as described in GS-47-0004

mat'l. code				surface		tolerance		projection		product family											
C14500				ISO 1302		✓ ISO 406 ISO 1101				D-SUB POWER											
ltr	ecn no	dr	date	tolerances unless otherwise specified						title											
A	-	GM	13-04-2022	angles		linear		mm		75A HI POWER CONTACT											
B	ELX-I-48587	ACJ	26-06-2023					.0±.0.3 .00±.0.15 .000±.05		FEMALE CRIMP TYPE											
				0°±1°				scale NTS		dwg no											
				dr		GREGAR M				sheet 1 of 1 size											
				engr		GREGAR M				10160779 A3											
				chr		ARUN C J															
				appd		SANOU P K															
sheet index	revision	B	1							type Product Customer Drawing											