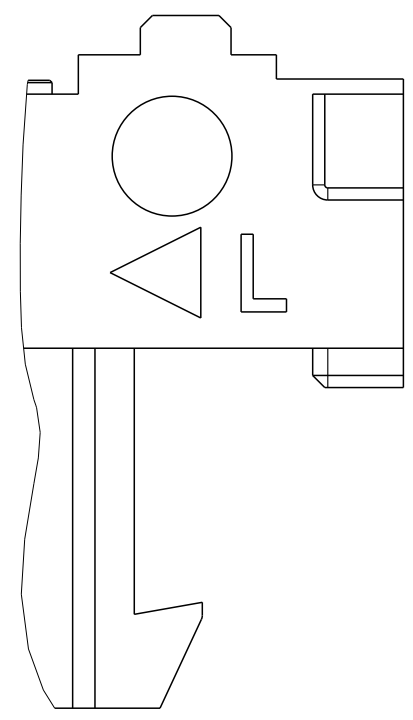


revision history				
rev	ecn no	description	dr	date
A	ELX-CD-F2958-1	FIRST RELEASE	WL	2022/02/25
-	-	-	-	YYYY/MM/DD
-	-	-	-	YYYY/MM/DD



Detail A  
Scale 4:1

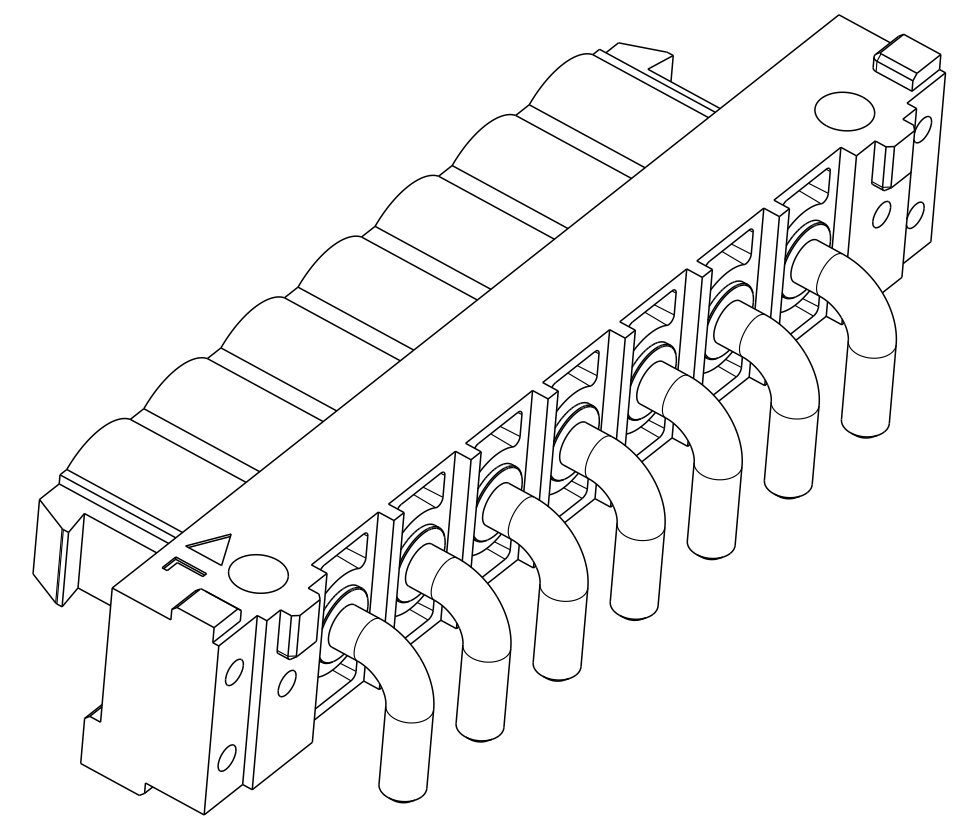
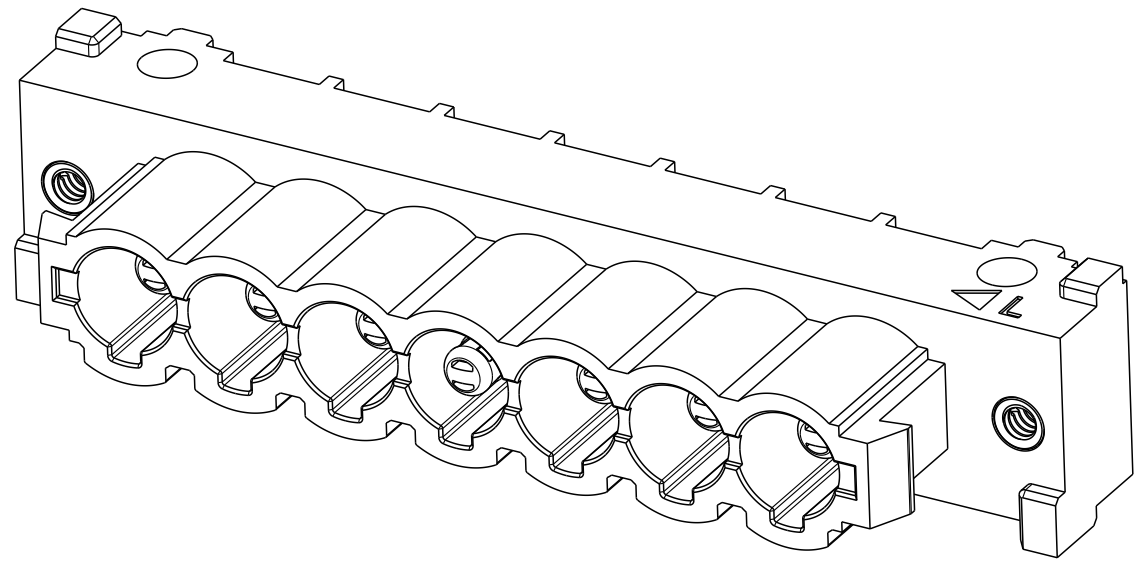
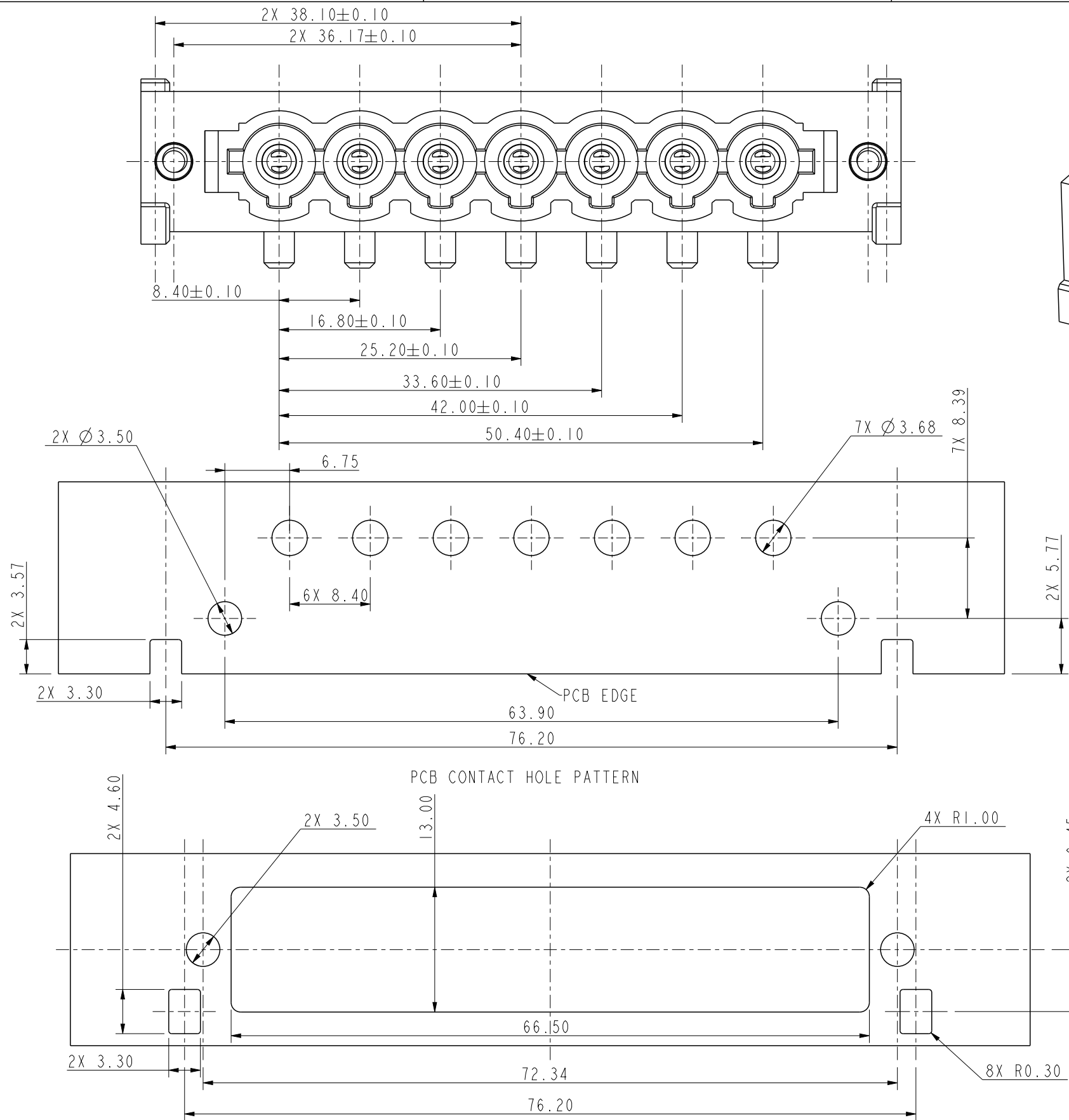
"L" INDICATE LEFT SIDE CONNECTOR  
"Δ" INDICATE STARTING POINT  
OF CONTACT POSITION I

Section A-A

NOTES:  
1. MATERIALS AND FINISHES:  
INSULATOR : GLASS-FILLED POLYESTER, UL 94V-0. COLOR: BLUE. (HALOGEN-FREE)  
POWER CONTACTS: HIGH CONDUCTIVITY COPPER ALLOY WITH GOLD FLASH OVER NICKEL PLATE.  
THREADED INSERT: COPPER ALLOY.  
2. COMPLIANT TO THE CURRENT ROHS DIRECTIVE.  
3. THIS MOS ALLOWS FOR THE CONNECTOR TO BE SUPPLIED WITH SPECIAL CONTACTS AND CONTACT MODULES WHICH ALLOWS FOR TOUCH SAFE FEATURE. THIS MOS ALSO ALLOWS FOR FIRST MATE CONTACT TO BE LOADED IN THE CENTRE CONTACT POSITION OF THE CONNECTOR.

spec ref				dr	Wesley Lee	2021/12/03	<div>Amphenol Power Solutions</div>			<div>mm</div>	scale	2:1	size	A3	
tolerance std		TOLERANCES UNLESS OTHERWISE SPECIFIED		eng	Wesley Lee	2022/03/22				ecn no -					
				r vwr	Gabby Wang	2022/03/22				rel level Released					
				appr	Brade Zou	2022/03/22				A Division of Amphenol Corporation			amphenol-icc.com		
surface	linear	0.X	±	projection		title	MALE CONNECTOR-LEFT			dwg no	C 10156982			rev	A
		0.XX	± 0.38												
		0.XXX	±												
	angular	0°	± °	product family			CUSTOM POWER			sheet 1 of 2					

revision history				
rev	ecn no	description	dr	date
A	ELX-CD-F2958-1	FIRST RELEASE	WL	2022/02/25
-	-	-	-	YYYY/MM/DD
-	-	-	-	YYYY/MM/DD



PANEL CUTOUT  
(GENERAL TOLERANCE:±0.13)

spec ref				dr		Wesley Lee		2021/12/03		<div>Amphenol Power Solutions</div>				<div>mm</div>		scale		2:1		size		A3					
tolerance std		TOLERANCES UNLESS OTHERWISE SPECIFIED				eng		Wesley Lee						2022/03/22		ecn no											
						rvwr		Gabby Wang						2022/03/22		rel level											
						appr		Brade Zou						2022/03/22													
										A Division of Amphenol Corporation				amphenol-icc.com				Released									
surface		linear		0.X		±		<div>projection</div> <div></div>		title		MALE CONNECTOR-LEFT						dwg no		C 10156982						rev	
				0.XX		± 0.38												cat. no.									
				0.XXX		±																					
		angular		0°		± °		product family										/				sheet 2 of 2					