

6

5

4

3

2

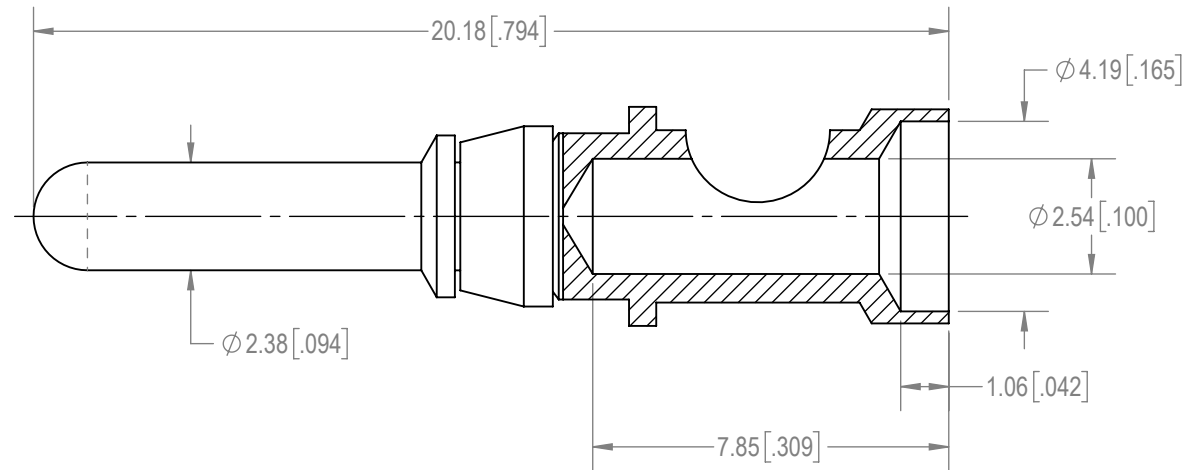
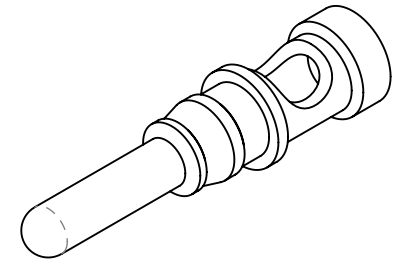
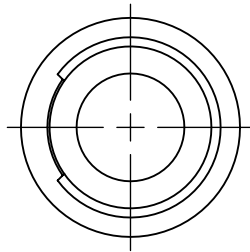
1

D



C

B

A

**NOTES:**

1. MATERIALS AND FINISH:  
CONTACT: PRECISION MACHINED COPPER ALLOY, GOLD FLASH OVER NICKEL PLATE.  
RETAINER RING: BERYLLIUM COPPER, GOLD FLASH OVER NICKEL PLATE.
2. CONTACT IS COMPLIANT TO THE CURRENT RoHS DIRECTIVE.
3. DETAILED PRODUCT, MECHANICAL AND ELECTRICAL INFORMATION IS AVAILABLE IN THE LATEST INFINITY PRODUCT PUBLICATION AT [CONNECTPOSITRONIC.COM](http://CONNECTPOSITRONIC.COM).

BY APG		CHK AP		3RD ANGLE 		<div>POSITRONIC BELIEVES THE DATA ON THE DRAWING TO BE RELIABLE. THE USER EMPLOYS SUCH INFORMATION AT HIS OWN DISCRETION AND RISK. POSITRONIC ASSUMES NO RESPONSIBILITY FOR RESULTS OBTAINED OR DAMAGES INCURRED FROM USE OF SUCH INFORMATION IN WHOLE OR IN PART.</div> <div> <b>Positronic®</b> CONNECTPOSITRONIC.COM</div>			
APR PA		RELEASED DATE: 2021-03-12		SCALE NTS					
TOLERANCES ±0.03mm [.001 INCHES] FOR MALE CONTACT MATING DIAMETERS ±0.08mm [.003 INCHES] FOR CONTACT TERMINATION DIAMETERS ±0.13mm [.005 INCHES] FOR ALL OTHER DIAMETERS ±0.38mm [.015 INCHES] FOR ALL OTHER DIMENSIONS ±5° FOR ALL ANGLES DIMENSION ARE IN MILLIMETERS [INCHES]		PART NUMBER MS612N/AA		SERIES INFINITY					
TITLE MS612N/AA				CREATED ON: 2021-02-14		SHEET SHEET 1 OF 1		REV A	

6

5

4

3

2

1

D

C

B

A