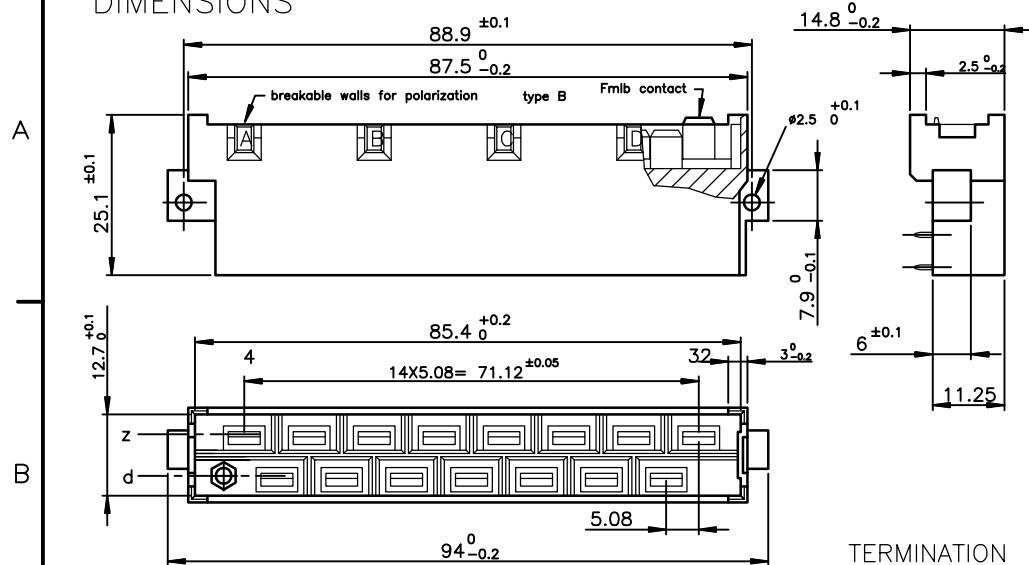
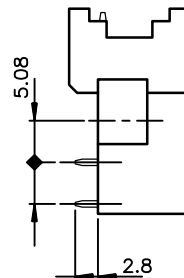


DIMENSIONS



TERMINATION



ELECTRICAL DATA

-Current at AMB.	15 A at 20° / 10 A at 70°
-Contact resistance	≤8mΩ according to DIN 41640 Teil 4 test 2a
-Insulation resistance	≥10 ¹⁰ MΩ according to DIN 41640 teil 7 test 3a
-TEST VOLTAGE	according to DIN 41640 teil 21
contact/contact	3100 V
contact/ground	3100 V
grounding pin position	Z 32

MECHANICAL DATA

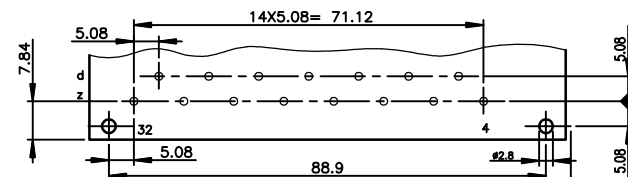
-Insertion force	≤90N
-Mechanical endurance	500 matings unmatings according to DIN41640 teil 21
-Material insulator	Polycarbonate UL94V0
-Material contacts	Copper alloy
-Finishing contact surface	Silver or Lead Free
-Finishing termination	Silver or Lead Free
-Schock	≤16mΩ according to DIN 41640 Teil 14 test 6c
-Vibration	10-2000Hz/20g according to DIN 41640 Teil 15

ENVIRONMENTAL DATA

-Climatic category	According to DIN 41612 - class 1
-Corrosion	According to DIN 41612 - class 1

PERFORMANCES AS PER DIN 41612 STYLE H 15 CLASS 1


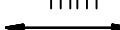

P.C. CARD DRILLING (scale 1.2)



NOTE RoHS INFORMATION

- The "LF" products meet European Union Directives and other country regulations as described in GS-22-008.
- The housing will withstand exposure to 260°C peak temperature for 3.5 seconds in a wave solder application with a 1.6mm minimum thick circuit board.
- For the right angled versions, like the current leaded versions, it's recommended to use high temperature adhesive or metallic device, to protect the nearest plastic part in contact with of the solder wave, to avoid any visual plastic deterioration.

European Views

www.fciconnect.com			surface ISO 1302		tolerance std ISO 406 ISO 1101		projection 		mm 		
			TOLERANCES UNLESS OTHERWISE SPECIFIED								
Dr	L.GOISNARD	2005/12/13	ANGULAR LINEAR		0.X		±0.1		size A3	Scale 2	
Eng	L.GOISNARD	2005/12/13			0.XX		±0.1				
Chr	P.LEGARE	2005/12/13			0.XXX		±0.1				
Appr	P.LEGARE	2005/12/13	Product family				DIN POWER		ECN F12-0053 Spec ref -		
			title MALE CONNECTOR 2 ROW 15 CONTACTS				dwg no C01-5159-0017				Rev. J
			catalog no				-		CUSTOMER sheet 1 of 1		