

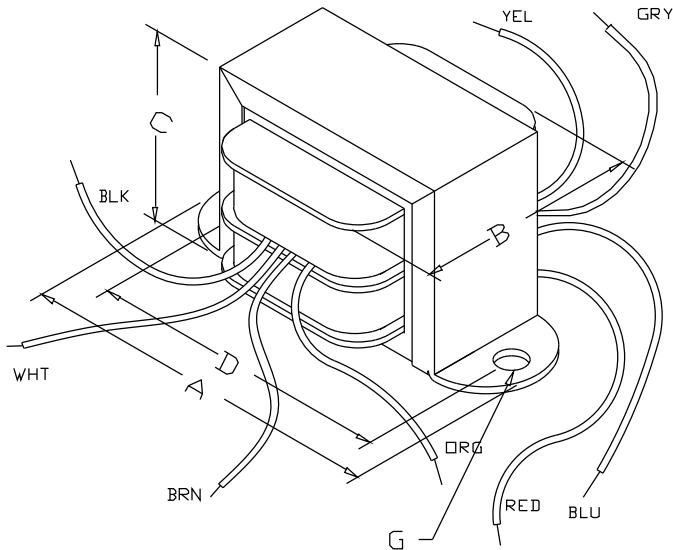


HAMMOND  
MANUFACTURING®

www.hammondmfg.com

# 266G9

## Power Transformer - Low Voltage/Filament Dual Primary & Secondary - Open Style Chassis Mount



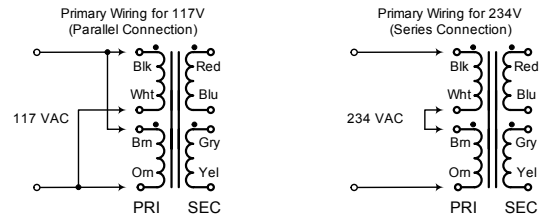
### Features

- Primary 117/234 VAC, 50/60 Hz.
- All units have dual secondaries except 266LA25 (C.T. secondary only). If you only require a single primary & secondary check out our more economical 166 Series.
- Secondaries can be used as; a center tapped secondary, parallel connected or used individually (except 266LA25).
- Units are designed for use with all windings engaged.
- Open style.
- Minimum 6" long leads.
- Dual bobbin design - no electrostatic shield required.
- We use Class B insulation (130 degrees, C) for extra protection - UL listed as a Class A (105 degree, C) design
- Hi-Pot test of 2,000V RMS.
- UL listed (# E207860) Type 3AH
- CSA certified (209651)

Overall Dimensions (in / mm)	
A	2.38 / 60
B	1.48 / 38
C	1.43 / 36
D	2 / 51
E	2 / -
Weight	0.4 lbs / 0.18 kg
Mounting Hole Sizes (in / mm)	
Width-wise	0.187 / 5
Depth-wise	/
Electrical	
Size (VA)	4.5
Primary	117/234 VAC, 50/60 Hz.
Secondary Series (C.T.)	9V @ 0.5A
Secondary Parallel	4.5V @ 1A

### Connection Information 266 Series Power Transformers

#### Primary Connections - 266 Series Transformers



#### Secondary Connections - 266 Series Transformers

