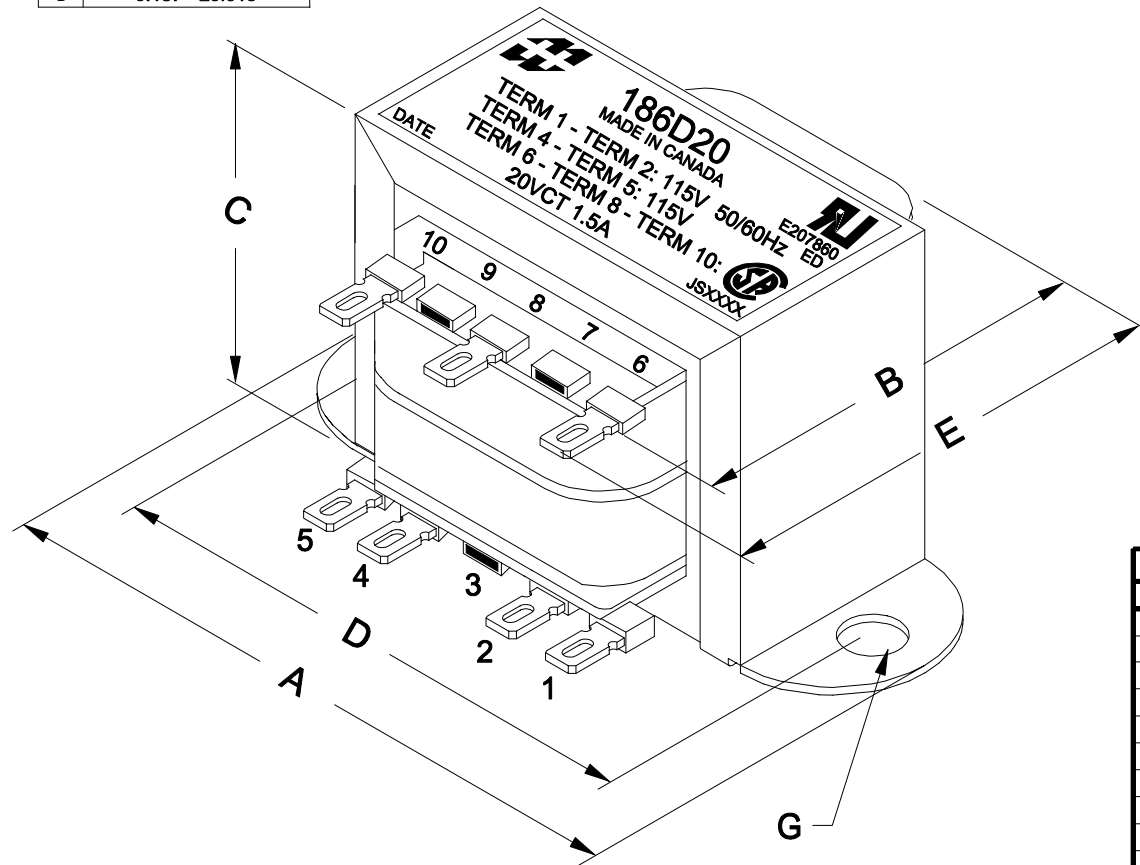
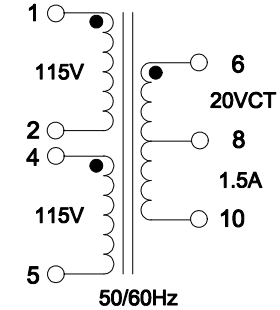


DIMENSIONS:

A	3.250" ±0.063
B	1.730" ±0.063
C	1.995" ±0.063
D	2.813" ±0.063
E	2.089" ±0.063
G	0.187" ±0.015



PRIMARY SECONDARY



FOR 230V:
CONNECT PIN 2 & PIN 4 TOGETHER
INPUT VOLTAGE ON PIN 1 TO PIN 5

FOR 115V:
CONNECT PIN 1 & PIN 4 TOGETHER
CONNECT PIN 2 & PIN 5 TOGETHER
INPUT VOLTAGE ON PIN 1 TO PIN 2

ELECTRICAL DATA:

TESTS	CONDITIONS	ACCEPTANCE CRITERIA	
I _{ex}	@ 115V, 60Hz, TERM 1 - TERM 2	90mA	Max.
Sec. N.L.V	@ 115V, 60Hz, TERM 1 - TERM 2		
	TERM 4 - TERM 5 =	115.0V	±2%
	TERM 6 - TERM 10 =	22.28V	±2%
	TERM 6 - TERM 8 = TERM 8 - TERM 10 =	11.14V	±2%
DCR	@ 20°C, TERM 1 - TERM 2 =	29.80 Ω	±20%
	@ 20°C, TERM 3 - TERM 4 =	35.27 Ω	±20%
	@ 20°C, TERM 5 - TERM 8 =	0.615 Ω	±20%
HIPOT	PRIMARY - SECONDARY	2500V, 60Hz, 1 SEC	

REV.#	REVISION	DATE	HAMMOND ELECTRONIC DIVISION			
0	RELEASED.	C.I. 04/07/16	52 RANKIN PLACE, WATERLOO, ONTARIO, N2J 3Z5			
			PH # (519) 886-6181			
			FAX # (519) 886-9540			
			DWG. BY: C. ILIE	CHK'D BY:	TITLE: POWER TRANSFORMER	DWG. NO. 186D20
			DATE: 04/07/16	APP'D. BY:		
				DIMENSIONS: IN(X) MM()		