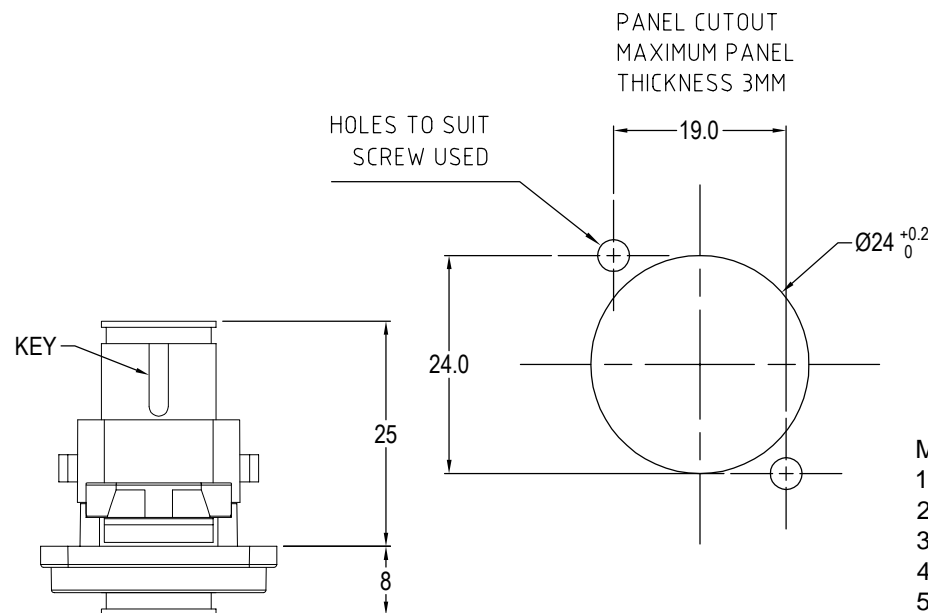


ISS.	AMEND	DATE
1	ISSUED	12/02/201
2	DUST CAP CHANGED	08/05/201
3	KEY NOTE	16/01/201



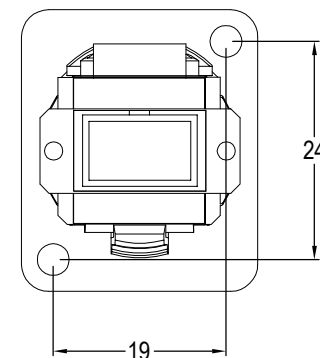
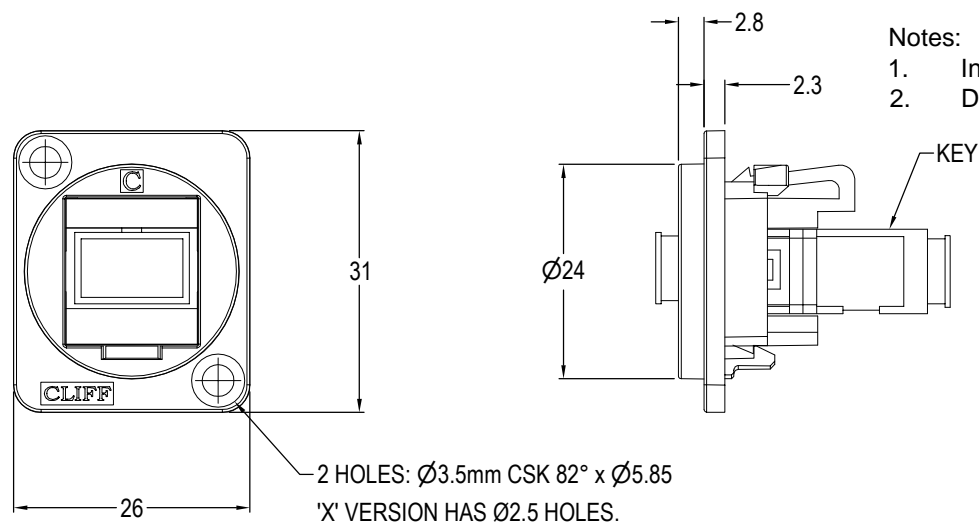
Material:

1. Coupler Body: ABS
2. Sleeve: Ceramic
3. Dust Cover: ABS
4. Insert: ABS/PC
5. Frame: Polyamide
6. UL94V-2

VARIANTS	
PART NO.	HOLE DETAILS
CP30216	HOLE $\text{Ø}3.50$ X CSK 82° X $\text{Ø}5.85$
CP30216X	PLAIN HOLE $\text{Ø}2.50$

Notes:

1. Insertion Loss: $\leq 0.3\text{dB}$
2. Dust caps may vary



RoHS	COMPLIANT
TOLERANCE	
NO DEC. PLACE \pm	
1 DEC. PLACE \pm	
2 DEC. PLACE \pm	
HOLE Ø \pm	
ANGLES \pm	
UNLESS OTHERWISE STATED	
DO NOT SCALE	

Cliff Electronic Components Ltd.

76 Holmethorpe Avenue, Holmethorpe Industrial Estate,
Redhill, Surrey, RH1 2PF, England, UK
Tel: 01737-771375 Fax: 01737-766012 Website: www.cliffuk.co.uk

THE CONTENTS OF THIS DOCUMENT MUST NOT BE COPIED OR DISCLOSED TO A 3rd PARTY WITHOUT WRITTEN PERMISSION OF CLIFF UK. © 2015

DIMENSIONS IN MILLIMETERS UNLESS OTHERWISE STATED. WORK TO DIMENSIONS. REMOVE ALL BURRS. IF IN DOUBT ASK.

3rd ANGLE PROJECTION:

MATERIAL: See Notes

FINISH: See Notes

DRAWN: D.P.J.

APPROVED: D.P.J.

TITLE: FEED THROUGH SC SIMPLEX MM (BEIGE) ADAPTOR

DRWG. No. CP30216

FORM: A4DRWG1