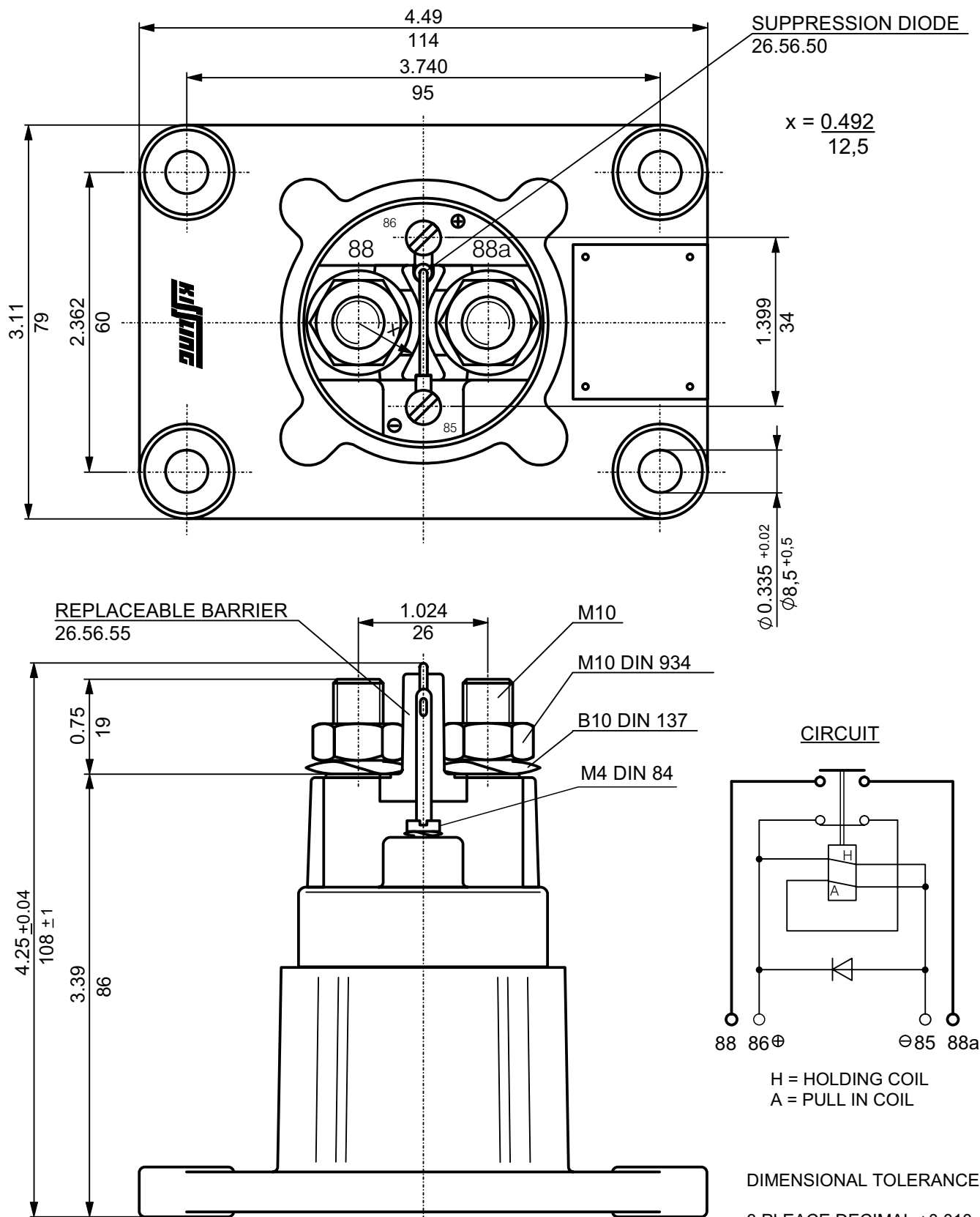


300 AMP POWER RELAY (28 VDC)
TOP MOUNTING ENVIRONMENTALLY SEALED
REPLACEABLE BARRIER SUPPRESSION DIODE



Third Angle Projection



1994	Date	Name	Inch mm	Scale /	 ELEKTROTECHNIK D-72218 Wildberg	Drawing No. \approx Order No. 26.56.32
Design	14.02.	Paul				
Check	14.02.	Grupp	General Tolerances			
Appro			DIN 7168 m ISO 2768			

TÄ-Nr.		300 AMP POWER RELAY (28 VDC) TOP MOUNTING ENVIRONMENTALLY SEALED	Specification Page 2 of 2
--------	--	---	------------------------------

MEETS THE REQUIREMENTS OF MIL - R - 6106

ENVIRONMENTAL CHARACTERISTICS

TEMPERATUR RANGE -55° C TO +74° C (-67° F TO +165° F)
 MAX. ALTITUDE RATING 50 000 FT
 SEAL IEC PUBLICATION 529; IP 67; 6 FT
 SHOCK G-LEVEL MIL-STD-202, TEST METHOD 213, HALF SINE = 18 MSEC / 30 G
 VIBRATION MIL-STD-202, TEST METHOD 213, TEST CONDITION C = 10 G
 ACCELERATION 15 G

ELECTRICAL CHARACTERISTICS

MIN. INSULATION RESISTANCE; INITIAL 100 MEGOHMS
 AFTER LIFE OR ENVIRONMENTAL 50 MEGOHMS
 DIELECTRIC WITHSTANDING VOLTAGE SEA-LEVEL 1 MINUTE 1 050 VOLTS
 ALTITUDE 1 MINUTE 500 VOLTS
 MAX. CONTACT DROP INITIAL 0.15 VOLTS
 AFTER LIFE TEST 0.175 VOLTS
 OVERLOAD 2 400 AMP
 RUPTURE CURRENT 3 000 AMP
 DUTY RATING 300 AMP CONTINUOUS

RATED CONTACT LOAD (28 VDC)

RESISTIVE LOAD 50 000 CYCLES WITH 300 AMP
 INDUCTIVE LOAD 10 000 CYCLES WITH 150 AMP
 MOTOR LOAD 50 000 CYCLES WITH 300 AMP
 MECHANICAL LIFE 100 000 CYCLES WITH 75 AMP

OPERATING CHARACTERISTICS

COIL DATA

VOLTAGE RANGE 18 - 32 VDC
 NOMINAL VOLTAGE 28 VDC
 PICK UP VOLTAGE MAX. 18 VDC FULL TEMP. RANGE
 RESISTANCE PULL IN COIL 5.2 OHMS ± 20%
 PULL IN CURRENT MAX. 4 AMP FOR 20 MILLISECONDS
 RESISTANCE HOLDING COIL 120 OHMS ± 10%
 HOLDING CURRENT MAX. 0.25 AMP
 DROP OUT VOLTAGE ≤ 6 VDC FULL TEMP. RANGE


TIME-MILLISECONDS-MAX.

OPERATE 25
 WITH SUPPRESSION DIODE 80
 RELEASE 15
 WITHOUT SUPPRESSION DIODE 5
 BOUNCE 5

WEIGHT 0.93 kg = 2.05 POUND MAX.

WIRE SECTION (AT NOMINAL LOAD) MIN. 95 mm² / 0.147 sq. in. / AWG 0000

SUBJECT TO CHANGE

1994	Date	Name	Inch mm	Scale /	 ELEKTROTECHNIK D-72218 Wildberg	Drawing No. ≙ Order No. <div style="text-align: center; font-size: 1.2em; font-weight: bold;">26.56.32</div>
Design	14.02.	Paul				
Check	14.02.	Grupp	General Tolerances			
Appro			DIN 7168 m ISO 2768			