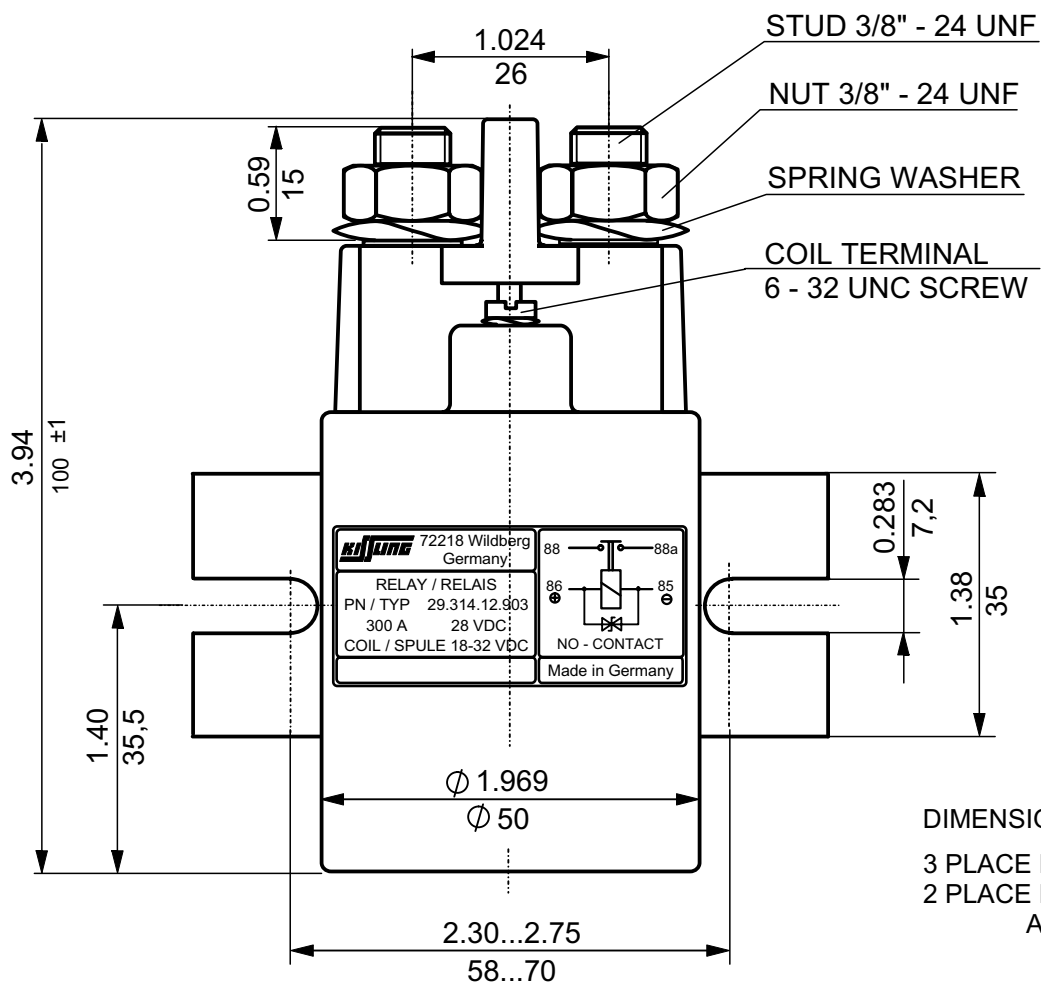
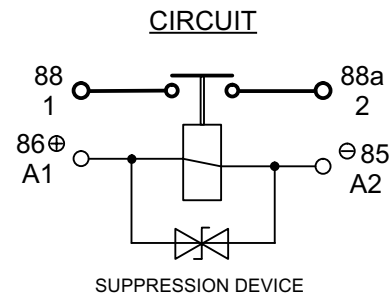
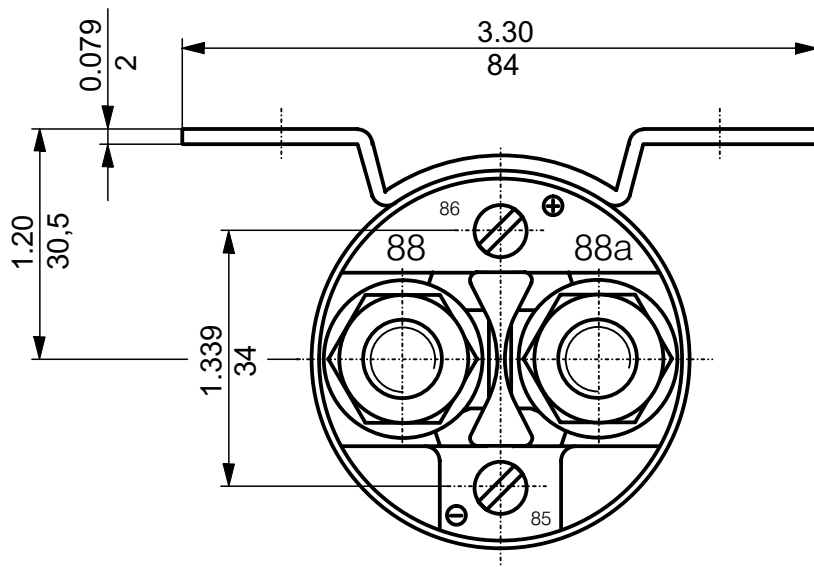


300AMP. POWER RELAY (28VDC)

AIR TRACTOR SPECIAL TYPE
 LONG FORM SIDE MOUNTING ENVIRONMENTALLY SEALED
 STUD TERMINALS 3/8" UNF COIL TERMINALS 6-32 UNC

Series **29**

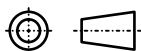
Page 1 of 2



DIMENSIONAL TOLERANCES

3 PLACE DECIMAL ± 0.010
 2 PLACE DECIMAL ± 0.03
 ANGULAR $\pm 0^\circ 30'$

Third Angle Projection



ORDER-NO.

29.314.02.903 WITHOUT SUPPRESSION
 29.314.12.903 WITH SUPPRESSION

1997	Date	Name	Inch mm	Scale 1:1	 ELEKTROTECHNIK D-72218 Wildberg	Drawing No. \approx Order No.
Design	11.06.	Bo				29.314.02.903
Check	11.06.	Grupp		General Tolerances DIN 7168 m ISO 2768		29.314.12.903
Appro						

TECHNICAL DATA

ENVIRONMENTAL CHARACTERISTICS

TEMPERATUR RANGE -40° C TO +85° C (-40° F TO +185° F)
MAX. ALTITUDE RATING 50 000 FT
SEAL IP67 (6 FEET / 0,2 BAR - 1MIN.) I.A.W. IEC 529
IP6K9K (STEAM PRESSURE) DIN 40050 PART 9 AND I.A.W. IEC 529
SHOCK G-LEVEL 6 G / 11 MSEC
VIBRATION 4 G / 50 - 2000 Hz

ELECTRICAL CHARACTERISTICS

MIN. INSULATION RESISTANCE; INITIAL	100 MEGOHMS
AFTER LIFE OR ENVIRONMENTAL	50 MEGOHMS
DIELECTRIC WITHSTANDING VOLTAGE	
SEA-LEVEL 1 MINUTE	1 050 VOLTS
ALTITUDE 1 MINUTE	500 VOLTS
MAX. CONTACT DROP INITIAL	0.15 VOLTS
AFTER LIFE TEST	0.175 VOLTS
OVERLOAD	2400 AMP FOR 1 SEC., 600 AMP FOR 20 SEC.
DUTY RATING	300 AMP CONTINUOUS

RATED CONTACT LOAD (28 VDC)

RESISTIVE LOAD	200 000 CYCLES WITH 300 AMP
INDUCTIVE LOAD	40 000 CYCLES WITH 75 AMP
MOTOR LOAD	200 000 CYCLES WITH 300 AMP
ENDURANCE	2 000 000 CYCLES

OPERATING CHARACTERISTICS

COIL DATA

VOLTAGE RANGE	18 - 32 VDC
NOMINAL VOLTAGE	28 VDC
PICK UP VOLTAGE MAX.	18 VDC FULL TEMP. RANGE
DROP OUT VOLTAGE MAX.	≤ 4 VDC FULL TEMP. RANGE
COIL RESISTANCE	62 OHMS ± 10%
COIL CURRENT APPROX.	0.4 AMP
COIL POWER APPROX.	10 WATT

TIME-MILLISECONDS-MAX.

OPERATE	40
BOUNCE	5
RELEASE	20

WEIGHT 0.82 kg = 1.81 POUND MAX.

WIRE SECTION (AT NOMINAL LOAD) MIN. 95 mm² / 0.147 sq. in. / AWG 0000

MOUNTING POSITION.....OPTIONAL

SUBJECT TO CHANGE

1997	Date	Name		Scale	 ELEKTROTECHNIK D-72218 Wildberg	Drawing No. ≙ Order No.
Design	11.06.	Bo				
Check	11.06.	Grupp	General Tolerances			29.314.12.903
Appro			DIN 7168 m ISO 2768			