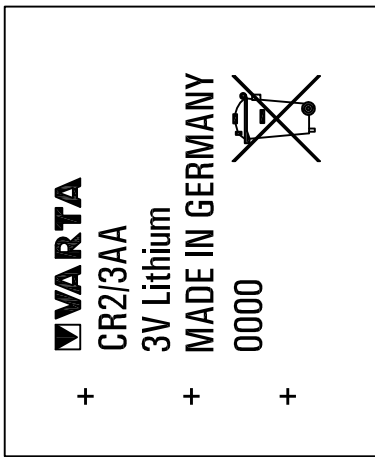
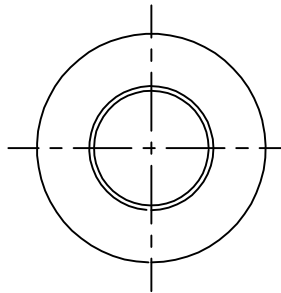
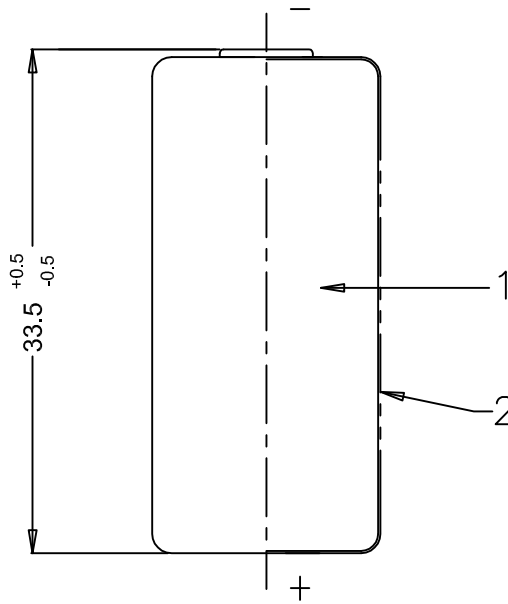


Front artwork



Rear artwork



Note: Use UL approved green shrink sleeve

1	R112/08	To add in printed sleeve the crossed-out wheeled bin symbol	2008-04-21	Eka
No	AO No	Revisions	Date	Name
Projection:		Material: Refer to part list no : 071851		Description: CR 2/3 AA battery with shrink sleeve
Dimensions in mm		Prepared & Checked	Verified & Approved	Dwg. No: 071851
Tolerance: As specified		1999-09-09	Tatang	VKB Order No: 06237 101 301
Scale: 2 : 1				