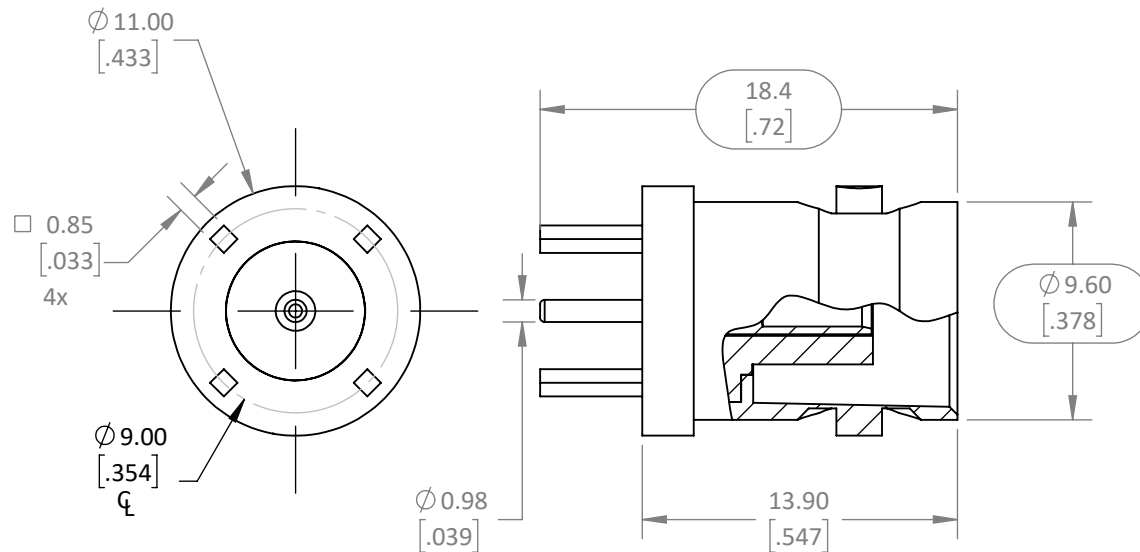
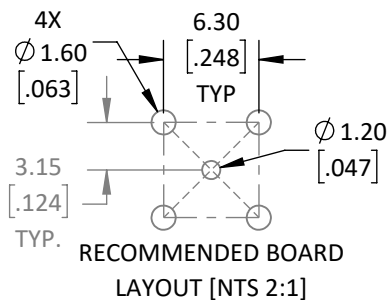


REVISIONS			
REV	DESCRIPTION	DATE	APPV
A	PRODUCTION RELEASE	JHAGER 11/17/21	DV 11/18/21



NOTES: (UNLESS OTHERWISE SPECIFIED)

- ALL DIMENSIONS ARE IN MILLIMETERS [IN].
- DIMENSIONS APPLY AFTER FINISHING.
- MANUFACTURE TO BE COMPLIANT WITH EU RoHS DIRECTIVE, USE MATERIALS THAT DO NOT CONTAIN REACH SUBSTANCES OF VERY HIGH CONCERN >1000ppm, AND USE DRC CONFLICT-FREE SOURCED MATERIALS.
- CONNECTORS TESTED IAW LINX TEST PLAN DOCUMENT AT LATEST REVISION.
- ELECTRICAL PROPERTIES SHOWN FOR REFERENCE ONLY. SEE LINX DATA SHEET FOR ELECTRICAL PROPERTIES
 - IMPEDANCE: 50 Ω
 - MAX FREQUENCY: 1GHz
 - INSERTION LOSS: NTE .075xvf (GHz)
- MECHANICAL DATA:
 - MATING CYCLES: 250MAX
 - MAX USE TEMPERATURE: -60° - +165°C
 - INTERCONNECT IAW MIL-STD-348B
- PACKAGE IN 100 LOT TRAY.



WARNING: THIS DRAWING CONTAINS PROPRIETARY INFORMATION THAT IS THE SOLE PROPERTY OF LINX TECHNOLOGIES, AND SHALL BE TREATED AS SUCH. NO DISCLOSURE OR REPRODUCTION OF THIS DOCUMENT IS PERMITTED, IN WHOLE OR IN PART, WITHOUT THE EXPRESS WRITTEN PERMISSION OF LINX TECHNOLOGIES OR ITS DESIGNATED AGENTS.

MATERIAL:	INTERPRET DIMENSIONS AND TOLERANCES PER ASME Y14.5.		PROJECTION:
BRASS	.X ± 2.0	ANGLES: $\pm 1^\circ$	
PTFE INSUL	.XX ± 1.00	SURFACE: $\sqrt{3}$	
FINISH:	DRAWN: JHAGER	DT: 11/16/21	
NICKEL BODY	ENGR: DASARATHAN	DT: 11/16/21	
GOLD PIN			



159 ORT LANE
MERLIN, OR 97532

TITLE:
**CONNECTOR, BNC FEMALE
VERTICAL PCB MOUNT NICKEL**

SIZE	DWG. NO.	REV
A	C-CONBNC001	A
SCALE: 3:1	DO NOT SCALE DRAWING	SHEET 1 OF 1