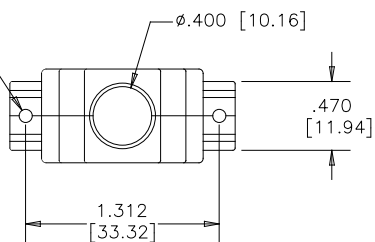
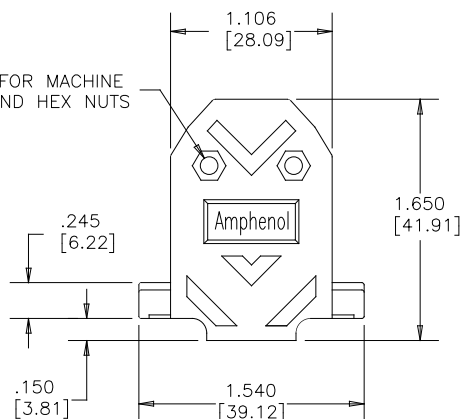


2 MOUNTING HOLES
FOR SADDLE WASHERS
AND CAPTIVE SCREWS

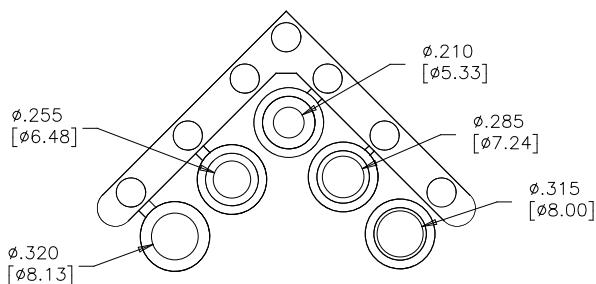


CONNECTOR BACKSHELL

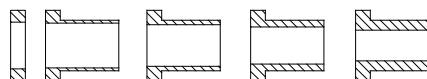
2 HOLES FOR MACHINE
SCREWS AND HEX NUTS



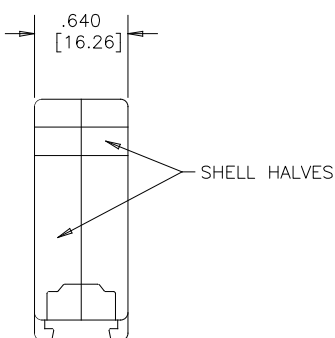
COMPRESSION INSERT TREE



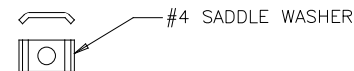
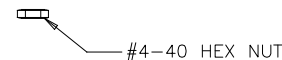
SIZE: 1 2 3 4 5



WASHER OR WASHER
PORTION OF INSERT



HARDWARE ITEMS



NOTES:

1. EACH BACKSHELL KIT CONTAINS 2 SHELL HALVES, 1 COMPRESSION INSERT TREE AND 2 OF EACH HARDWARE ITEM SHOWN.
2. BACKSHELL IS SUITABLE FOR SUBMINIATURE D CONNECTOR, A SIZE SHELL (15 POSITION STANDARD CONTACTS OR 26 POSITION HIGH DENSITY CONTACTS).
3. COMPRESSION JACKET INSERTS ARE DESIGNED FOR A CABLE DIAMETER RANGE OF .210 [5.33] TO .320 [8.13].
4. MATERIALS - ALL MATERIALS ARE RoHS COMPLIANT
SHELL - ABS COMPOUND, UL94HB RATING, NICKEL PLATED
INSERT TREE - BLACK THERMOPLASTIC, 75 DUROMETER
HARDWARE - STEEL, ZINC PLATED, HEXAVALENT CHROMIUM FREE FINISH

ASSEMBLY INSTRUCTIONS:

1. SELECT THE TIGHTEST INSERT THAT WILL FIT OVER THE CABLE, AND FEED THE CABLE THROUGH IT, PLACING THE END WITH THE SMALLER OD (THE END WITHOUT THE WASHER) TOWARDS THE CONNECTOR.
2. TERMINATE THE CABLE WIRES TO THE CONNECTOR.
3. CUT THE JACKET, FOLD THE SHIELDING BACK OVER THE OUTSIDE OF THE INSERT AND CUT IT JUST SHORT OF THE WASHER.
4. INSTALL SADDLE WASHERS, CAPTIVE SCREWS AND CONNECTOR.
5. PLACE THE WASHER IN OUTERMOST DEPRESSION IN CABLE EXIT AREA OF THE BACKSHELL AND SCREW SHELL HALVES CLOSED.



AMPHENOL PART NUMBER 17E-1725-2

UNLESS SPECIFIED OTHERWISE	DRAWN K.LAMBIE	JAN29/14
PRIMARY UNITS INCHES	CHECKED	
SECONDARY MILLIMETERS	I.E. APP'D	
REFERENCE IN PARENTHESES	Q.A. APP'D	
GENERAL TOLERANCES	DWG APP'D	
1 DECIMAL PLACE	ENG. REL. NO. EAR 14259	
2 DECIMAL PLACES	REF.	
3 DECIMAL PLACES ±.020	THIRD ANGLE PROJECTION	DO NOT SCALE DRAWING
ANGULAR DEGREES		

Amphenol Canada Corp.

17E SERIES PLATED PLASTIC BACKSHELL
FOR D-SUB CONNECTOR WITH A SIZE SHELL
(15 STD OR 26 HD CONTACTS), STRAIGHT
EXIT, #4-40 THREAD, RoHS COMPLIANT

DWG NO.	P-17E-1725-2	REV C
CODE ID NO. Q3554	DWG SIZE C	SCALE 3:2 SHEET 1 OF 1