

THE INFORMATION CONTAINED IN THIS DRAWING IS THE SOLE PROPERTY OF AMPHENOL CABLES ON DEMAND. ANY REPRODUCTION OR DISCLOSURE, TO THIRD PARTIES, IN PART OR WHOLE, WITHOUT THE EXPRESS WRITTEN PERMISSION OF AMPHENOL CABLES ON DEMAND IS PROHIBITED.

REV.		DESCRIPTION	REVISIONS	DATE	APPROVED
A	New Release			2023.05.15	LI

### Overview

Bandwidth: 2000MHz  
OD: 6.0mm  
Conductor: 26AWG  
Approvals: RoHS  
Connector: 50U" gold plated RJ45 connector

### Physical Characteristics

- Cable Type – Cat8 STP
- Connector Type(s) – RJ45
- Wiring Scheme –T568B
- Temperature Rating
  - Installation: 0°C~50°C
  - Operation: -20°C~60°C
- Voltage Rating – 30V

### Conductor (Qty. 4 twisted pair)

- Conductor Type – 26AWG(7/0.16MM), Stranded BC
- Insulation – FOPE
- Diameter – 1.02±0.05mm
- Pair Identification:
  - Pair1=Orange, Orange-White
  - Pair2=Blue, Blue-White
  - Pair3=Green, Green-White
  - Pair4=Brown, Brown-White

### Connector Type (Qty. 2)

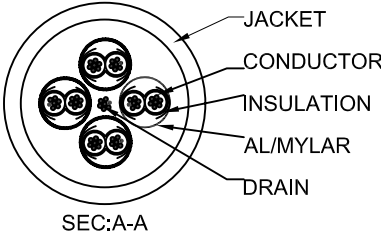
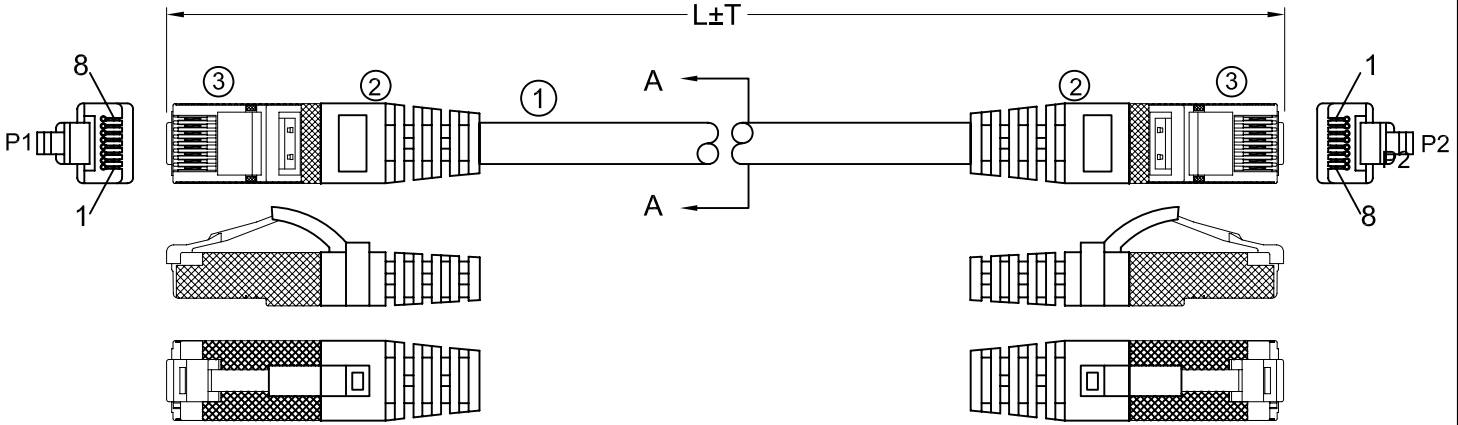
- Connector Type – Shielded 8P8C (RJ45)
- Gender – Male
- Connector Material – Transparent Black PC
- Contact Material – Copper Alloy, 50U"Gold Plating
- Hood Material – PVC MOLDED BOOT

### Overall Cable

- Jacket – PVC
- Minimum Average Thickness – 0.60mm
- Outer Diameter – 6.0 ± 0.20mm

### Electrical Characteristics

- Conductor DC Resistance – 17.89Ω/100m (maximum)
- Impedance – 100Ω
- Capacitance – 5600pf/100m
- Propagation Delay – 545ns/100m (maximum)
- Delay Skew – 45ns/100m (maximum)
- Pass Fluke DSX 8000 Channel Test



P1	P2 T568B
1	1 WHITE/ORANGE
2	2 ORANGE
3	3 WHITE/GREEN
4	4 BLUE
5	5 WHITE/BLUE
6	6 GREEN
7	7 WHITE/BROWN
8	8 BROWN
S	S SHIELDED



PART NO.	LENGTH(FT)	TOLERANCE
MP-CAT8STPBLK-001	1	+20/-15mm
MP-CAT8STPBLK-002	2	+20/-15mm
MP-CAT8STPBLK-003	3	+20/-15mm
MP-CAT8STPBLK-005	5	±20mm
MP-CAT8STPBLK-007	7	±30mm
MP-CAT8STPBLK-010	10	±30mm
MP-CAT8STPBLK-014	14	±30mm
MP-CAT8STPBLK-025	25	±50mm
MP-CAT8STPBLK-030	30	±80mm
MP-CAT8STPBLK-050	50	±80mm

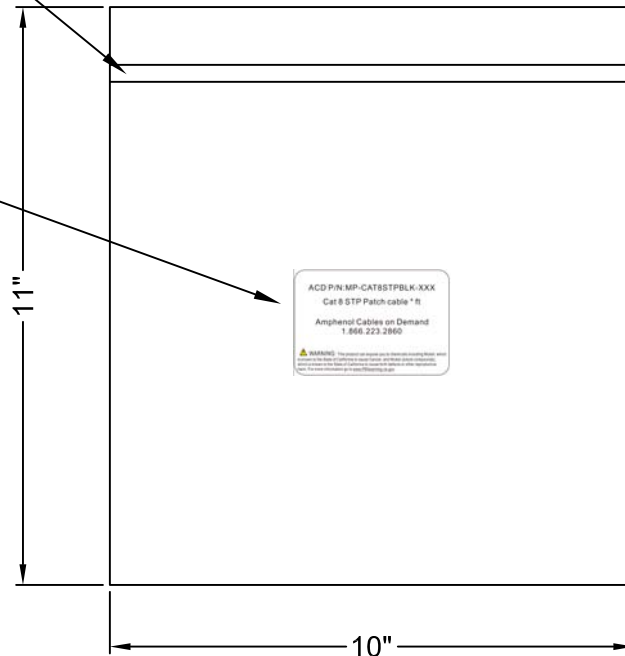
UNLESS OTHERWISE SPECIFIED DIMENSIONS ARE IN INCHES TOLERANCES ARE:		EAR NO.		Amphenol Cables on Demand 20 VALLEY ST. ENDICOTT, NY 13760	
DECIMALS	ANGLES	APPROVALS	DATE		
.X ±X	±X°	DRAWN LF		CAT 8 STP Patch Cable	
.XX ±XX		CHECKED BA			
.XXX ±XXX		RESP ENG			
THIRD ANGLE PROJECTION		MFG ENG		SIZE A	DWG. NO. MP-CAT8STPBLK-XXX
CAD FILE:					REV. A

THE INFORMATION CONTAINED IN THIS DRAWING IS THE SOLE PROPERTY OF AMPHENOL CABLES ON DEMAND. ANY REPRODUCTION OR DISCLOSURE, TO THIRD PARTIES, IN PART OR WHOLE, WITHOUT THE EXPRESS WRITTEN PERMISSION OF AMPHENOL CABLES ON DEMAND IS PROHIBITED.

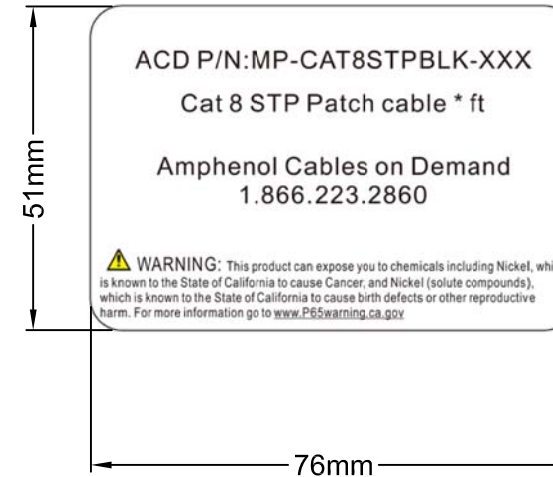
REV.		DESCRIPTION	DATE	APPROVED
A	New Release		2023.05.15	LI

HOT Seal

Label



1 PC/PE Bag



Label

(White Background with Black letter)

PART NO.	LENGTH(FT)	TOLERANCE
MP-CAT8STPBLK-001	1	+20/-15mm
MP-CAT8STPBLK-002	2	+20/-15mm
MP-CAT8STPBLK-003	3	+20/-15mm
MP-CAT8STPBLK-005	5	±20mm
MP-CAT8STPBLK-007	7	±30mm
MP-CAT8STPBLK-010	10	±30mm
MP-CAT8STPBLK-014	14	±30mm
MP-CAT8STPBLK-025	25	±50mm
MP-CAT8STPBLK-030	30	±80mm
MP-CAT8STPBLK-050	50	±80mm



UNLESS OTHERWISE SPECIFIED DIMENSIONS ARE IN INCHES TOLERANCES ARE:		EAR NO.		Amphenol Cables on Demand 20 VALLEY ST. ENDICOTT, NY 13760	
DECIMALS	ANGLES	APPROVALS	DATE	CAT 8 STP Patch Cable	
.X ±X	± X°	DRAWN			
.XX ±XX		CHECKED			
.XXX ±XXX		RESP ENG			
THIRD ANGLE PROJECTION		MFG ENG		SIZE A	DWG. NO. MP-CAT8STPBLK-XXX
CAD FILE:				SCALE	SHEET 2 OF 2