

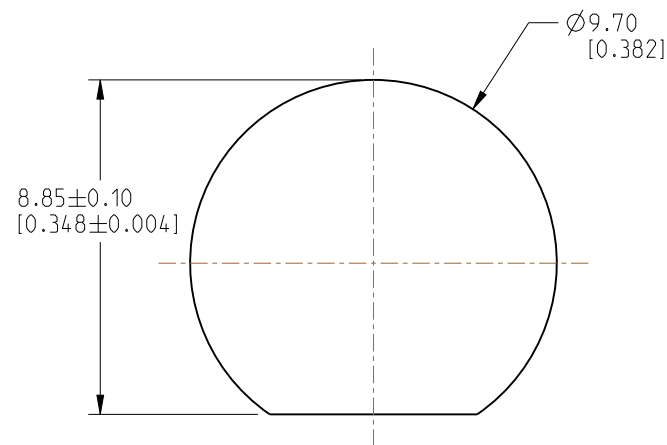
1. MATERIALS AND FINISHES:
BODY - BRASS, NICKEL PLATING
CONTACT - PHOSPHOR BRONZE, GOLD PLATING
INSULATOR - DELRIN, NATURAL

2. ELECTRICAL:
A. IMPEDANCE: 50 OHM
B. FREQUENCY RANGE: DC - 4 GHz
C. DIELECTRIC WITHSTANDING VOLTAGE: 1500 VRMS, MIN.

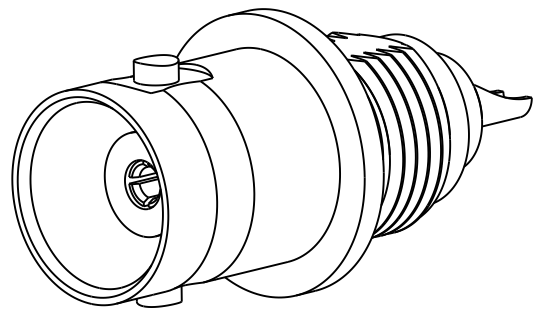
3. MECHANICAL:
A. DURABILITY: 500 CYCLES MIN.
B. TEMPERATURE RANGE: -40°C TO +85°C

4. PACKAGING:
A. QUANTITY: SINGLE PACK
B. MARKING: BAG TO BE MARKED
"AMPHENOL RF, 31-7059 AND DATE CODE"

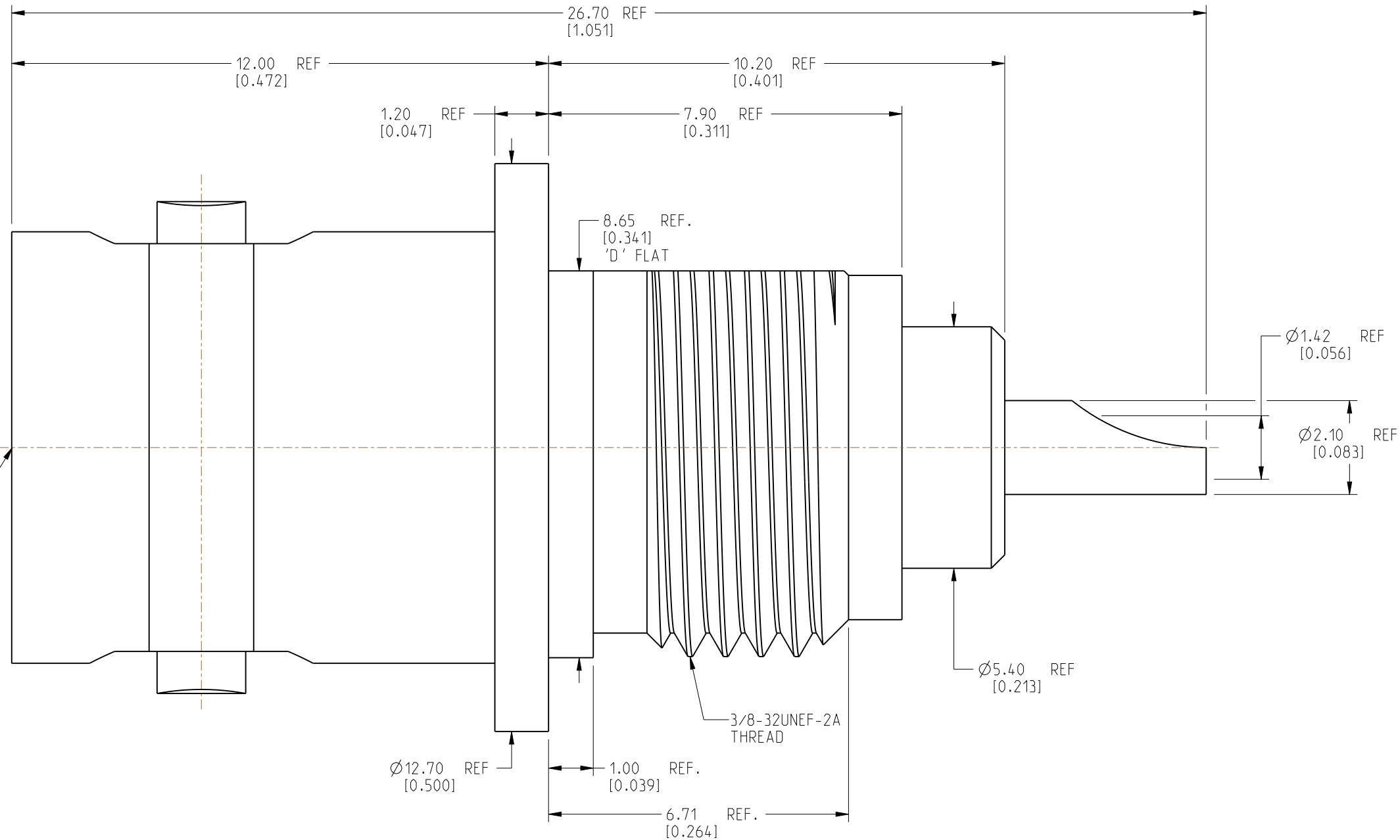
REVISIONS				
REV	DESCRIPTION	DATE	ECN	BY
A	RELEASE TO MFG.	07-JUN-24	17061	SH



RECOMMENDED MOUNTING HOLE DIMENSIONS



SCALE 3.000



CUSTOMER OUTLINE DRAWING

ALL OTHER SHEETS ARE FOR INTERNAL USE ONLY

NOTICE: These drawings, specifications, or other data (1) are, and remain the property of Amphenol corp. (2) must be returned upon request; and (3) are confidential and not to be disclosed to any person other than those to whom they are given by Amphenol Corp. The furnishing of these drawings, specifications, or other data by Amphenol Corp., or to any other person to anyone for any purpose is not to be regarded by implication or otherwise in any manner licensing, granting rights to permitting such holder or any other person to manufacture, use or sell any product, process or design, patented or otherwise, that may in any way be related to or disclosed by said drawings, specifications, or other data.

UNLESS OTHERWISE SPECIFIED
DIMENSIONS ARE METRIC (INCHES) AND TOLERANCES ARE:

<0.5mm = ±0.05mm	[<0.020 = ±0.002]
0.5 - 6mm = ±0.1mm	[0.020 - 0.236 = ±0.004]
>6.00 - 30mm = ±0.2mm	[>0.236 - 1.181 = ±0.008]
>30.00 - 120mm = ±0.3mm	[>1.181 - 4.725 = ±0.012]

SEE NOTES

ENGR.2
M.ZHANG

DATE	24-May-24
------	-----------

BNC STR BHD JACK
FRONT MOUNT RECEPTACLE

SHEET NO. 2 OF 2

SCALE: 9.0:1.0

Amphenol RF

SIZE	DRAWING NO. 31-7059
------	---------------------

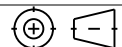
ITEM NO.	31-7059
----------	---------

B	PART NO.	31-7059

EV

A

THIRD ANGLE PROJ.



REFERENCE
B6351B1-ND3G-50

EAR#	12495
------	-------

ANGLES = $\pm 1^\circ$