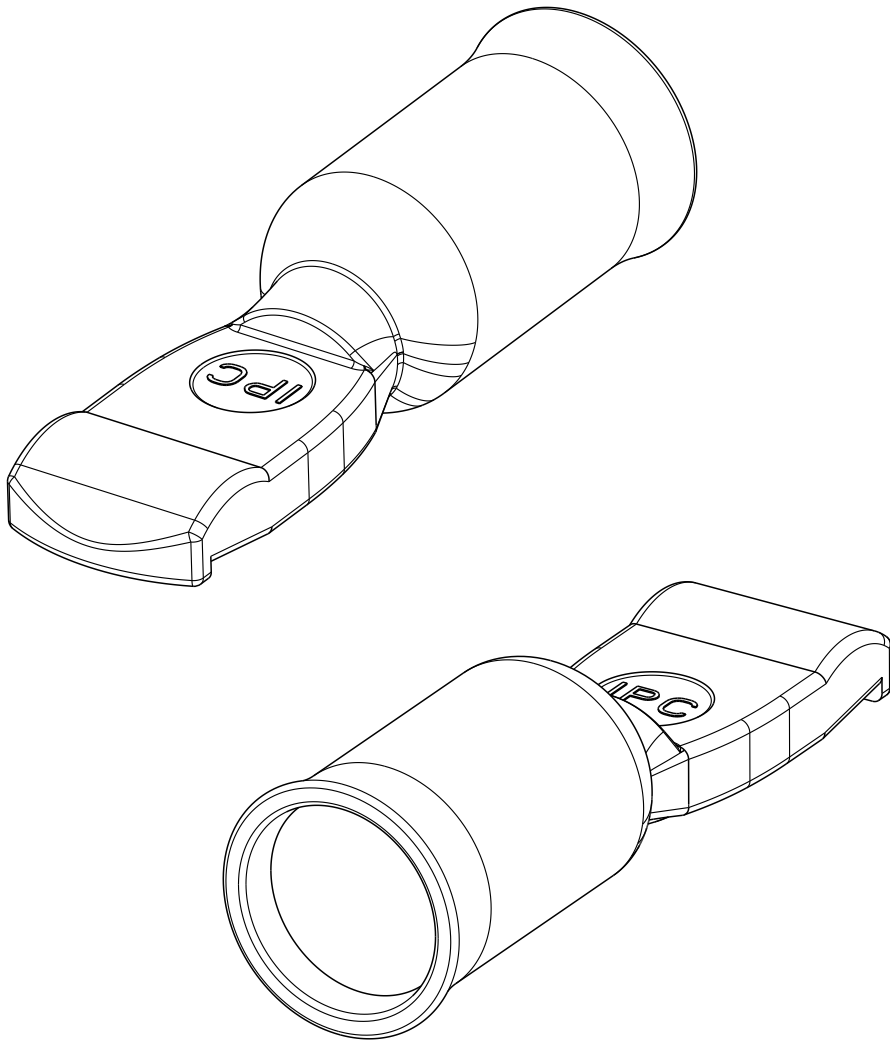
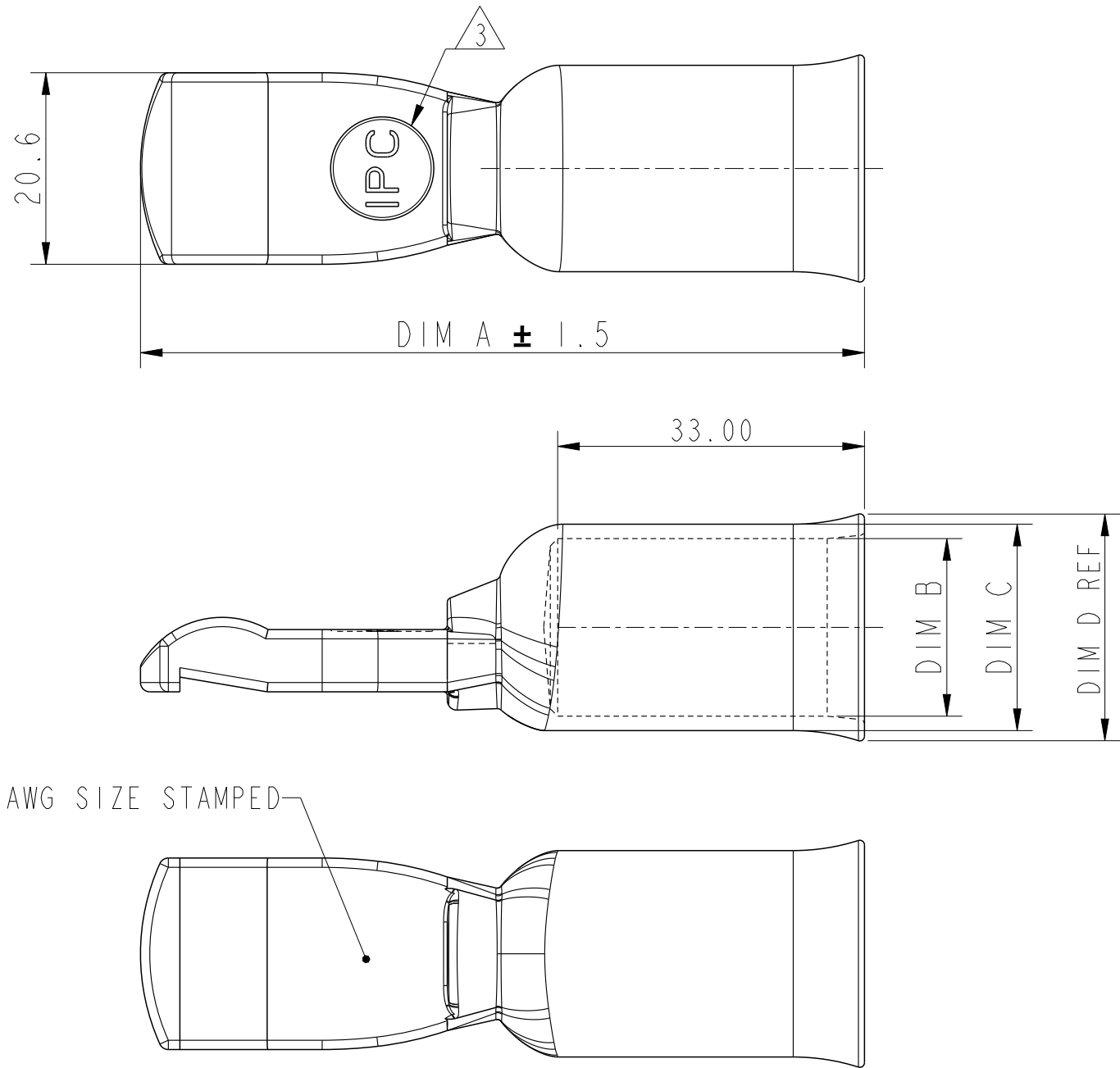


A

C

D

PART NUMBER	PLATING	AWG SIZE	DIM A	DIM B	DIM C	DIM D
10170843-S01LF	SILVER	1/0	74MM	11.2MM	13.0MM	16.0MM
10170843-S02LF		2/0	75MM	12.4MM	16.3MM	18.2MM
10170843-S03LF		3/0	76MM	14.7MM	17.9MM	19.8MM
10170843-S04LF		4/0	77MM	16.3MM	19.1MM	21.2MM
10170843-S05LF		300MCM / 350MCM	77MM	19.1MM	22.2MM	24.4MM



A

B

C

D

NOTES :

1 - MATERIAL : COPPER ALLOY.

2 - SILVER PLATTED.

3 - STAMP MARK MAY BE ROTATED.

spec ref				dr		Anooj-P Jacob		2024/02/20		<div>Amphenol Power Solutions</div>				<div>MM</div>		scale		size							
tolerance std		TOLERANCES UNLESS OTHERWISE SPECIFIED		eng		Anooj-P Jacob		2024/02/21						ecn no											
ISO 406 ISO 1101				rv wr		-		-																	
				appr		Varma Sudhir		2024/02/21		A Division of Amphenol Corporation				amphenol-icc.com		rel level: Released									
<div>surface</div> <div>ISO 1302</div>		<div>linear</div>		<div>0.X</div> <div>±0.5</div>		<div>0.XX</div> <div>±0.2</div>		<div>0.XXX</div> <div>±0.1</div>		<div>projection</div> <div></div>		title		IPC-M350 CONTACT ePwr™ BATTERY CONNECTOR				dwg no		10170843				rev	
																		cat. no.		-				A	
										product family		-		Product - Customer Drw				sheet 1 of 1							