

SECTION A-A

HF(无卤)	√
Non-HF(有卤)	



1. MATERIAL
 - 1.1 HOUSING: HIGH TEMPERATURE THERMOPLASTIC, UL94V-0, COLOR:BLACK.
 - 1.2 CONTACTS : PHOSPHOR BRONZE
PLATING: REFER TO P/N SYSTEM ON MATING AREA.
1.27um MIN NICKEL UNDER PLATED OVERALL.
2.54um MIN PURE MATTE TIN ON SOLDER TAILS.
 - 1.3 SOLDER CLIPS: COPPER ALLOY
2.54um MIN PURE MATTE TIN OVER 1.27um MIN NICKEL.
 2. GENERAL SPECIFICATION
 - 2.1 CURRENT RATING: 1.5A/PER PIN (POWER SECTION).
 - 2.2 CONTACT RESISTANCE: 30mΩ MAX (INITIAL).
 - 2.3 INSULATOR RESISTANCE: 1000MΩ MIN.
 - 2.4 DIELECTRIC WITHSTANDING VOLTAGE: 500 VAC
 - 2.5 OPERATION TEMPERATURE: -55°C~+105°C
- ③. PREMATING AT P4 & P12
4. SUPPORT PCIe GEN4 AND SAS3.0
 5. DIMENSIONING SHALL BE INTERPRETED PER ASME Y14.5M 1994.
 6. MATERIAL SHOULD BE FULFILED AMPHENOL SPEC.S-SN-002 AND S-SN-004.
 7. ORDER P/N SYSTEM: PSAS4F213020XXX

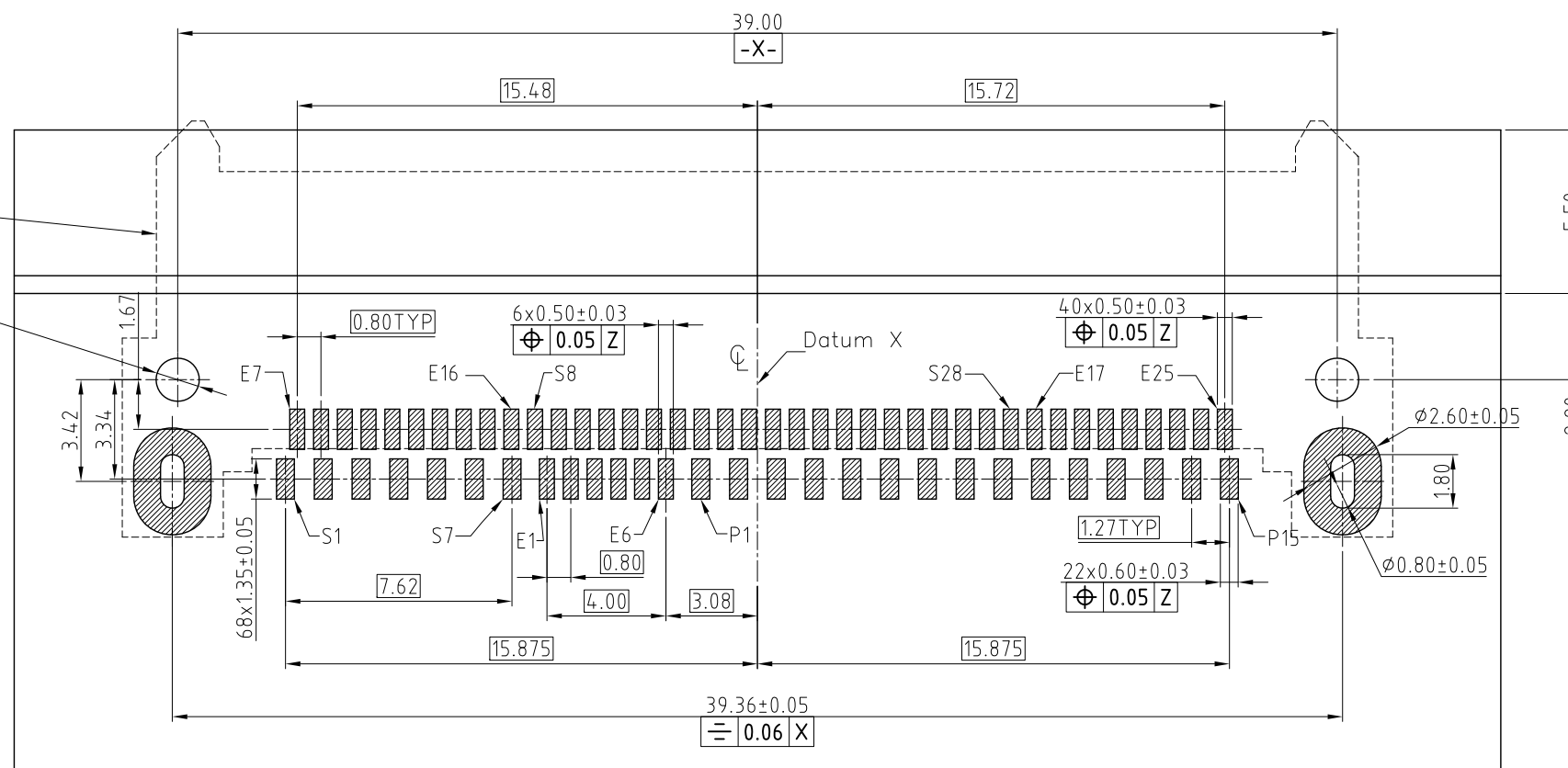
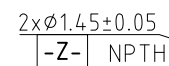
1- 0.76um MIN Au.
2- 0.38um MIN Au.
3- Gold FLASH

NIL- TRAY WITHOUT PICK-UP CAP
C- TRAY WITH PICK-UP CAP
TR- TAPE AND REEL WITH PICK-UP CAP
NT- TAPE AND REEL WITHOUT PICK-UP CAP

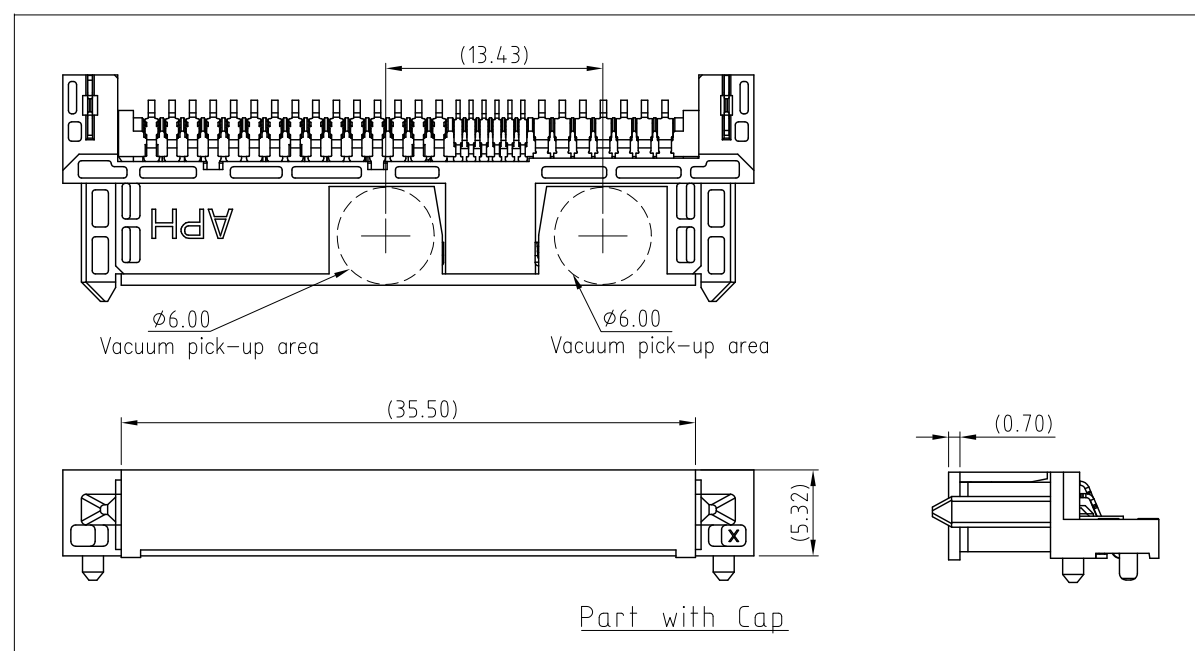
PDS: Rev :1

STATUS:Released

Printed: Apr 04, 2024




RECOMMENDED PCB LAYOUT
GENERAL TOLERANCE ± 0.05



HF(无卤)	√
Non-HF(有卤)	



UNLESS OTHERWISE SPECIFIED TOLERANCES		APPROVAL		DATE		<h1>Amphenol</h1> <p>Amphenol East Asia Limited</p>	
U.S. METRIC		DRAWN	Jackie.Tan	04/07'22			
.X +/- 0.50		CHECKED	Xiang.Wang	04/07'22			
.XX +/- 0.25		CHECKED					
.XXX +/- 0.20				TITLE			
FRACTIONS +/-		DRAWING FILE :		PCle/SAS R/A SMT RECEPTACLE			
ANGLES +/- 3°							
FOR MATERIALS AND FINISHES SEE NOTES		\DRAWING\PSAS\PSAS4F213020XXX-1		SIZE		DRAWING NO.	
REMOVE SHARP EDGES		<p>ANGLE OF PROJECTION</p> 		A3		PSAS4F213020XXX	
DIMENSIONS							
U.S. INCHES							
(METRIC) (MM)				SCALE		NONE	
						SHEET 2 OF 3	

This document is the property of Amphenol Corporation and is delivered on the express condition that it is not to be disclosed, reproduced or used, in whole or in part, for manufacture or sale by anyone other than Amphenol Corporation without its prior consent, & that no right is granted to disclose or to use any information in this document.

CUSTOMER DRAWING

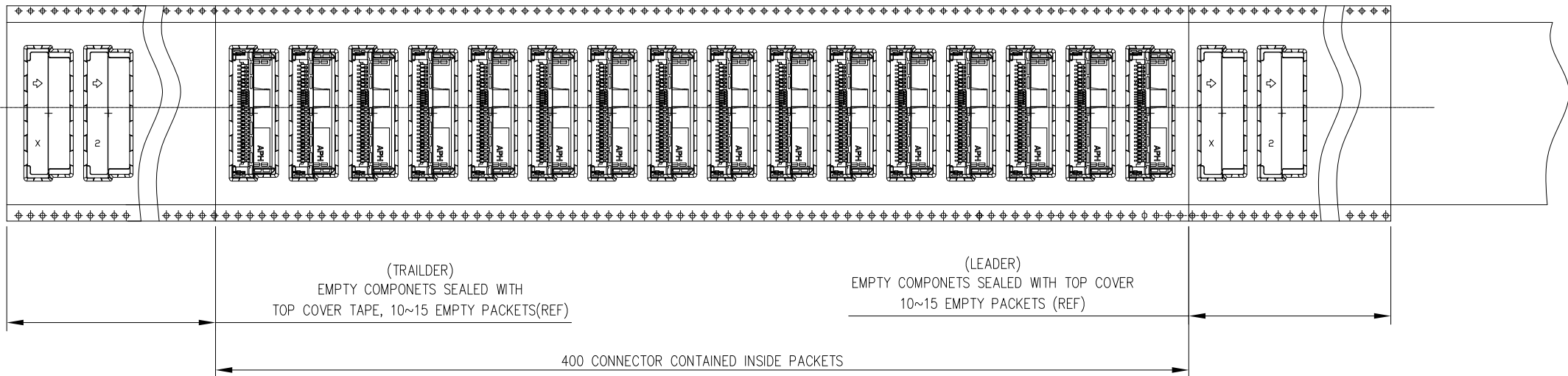
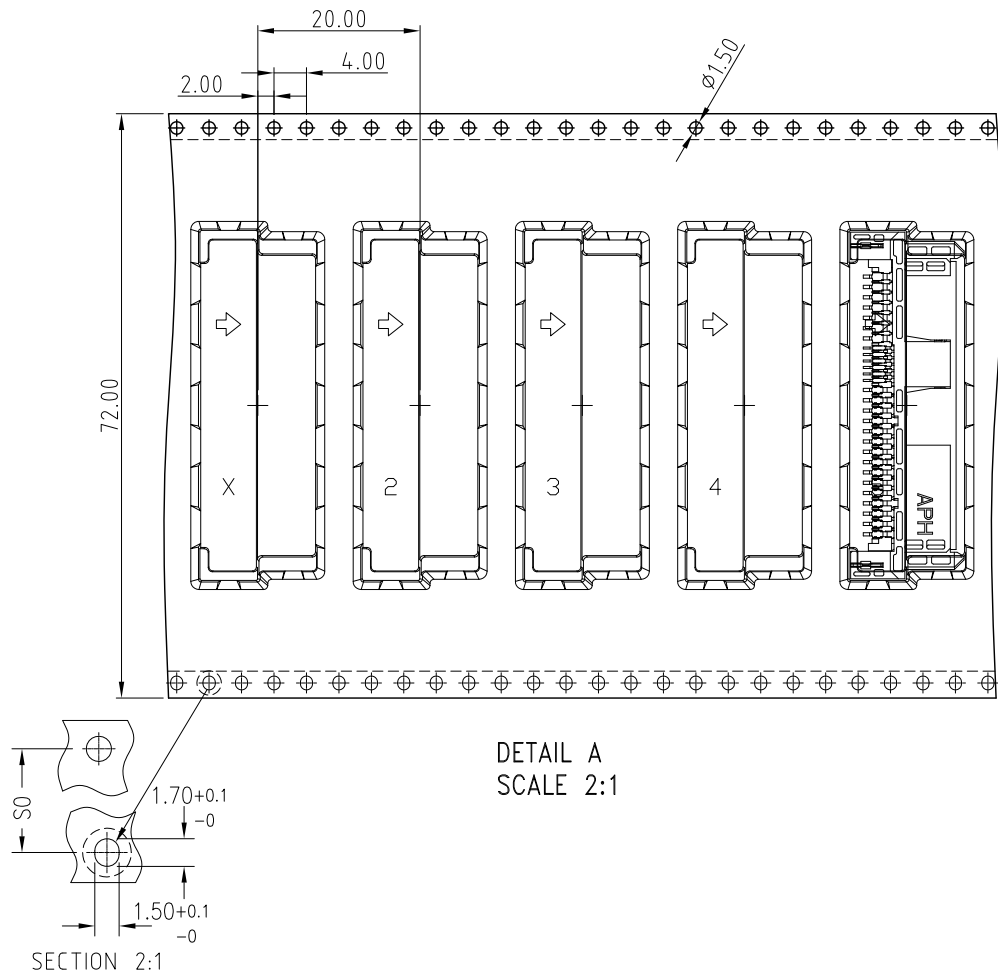
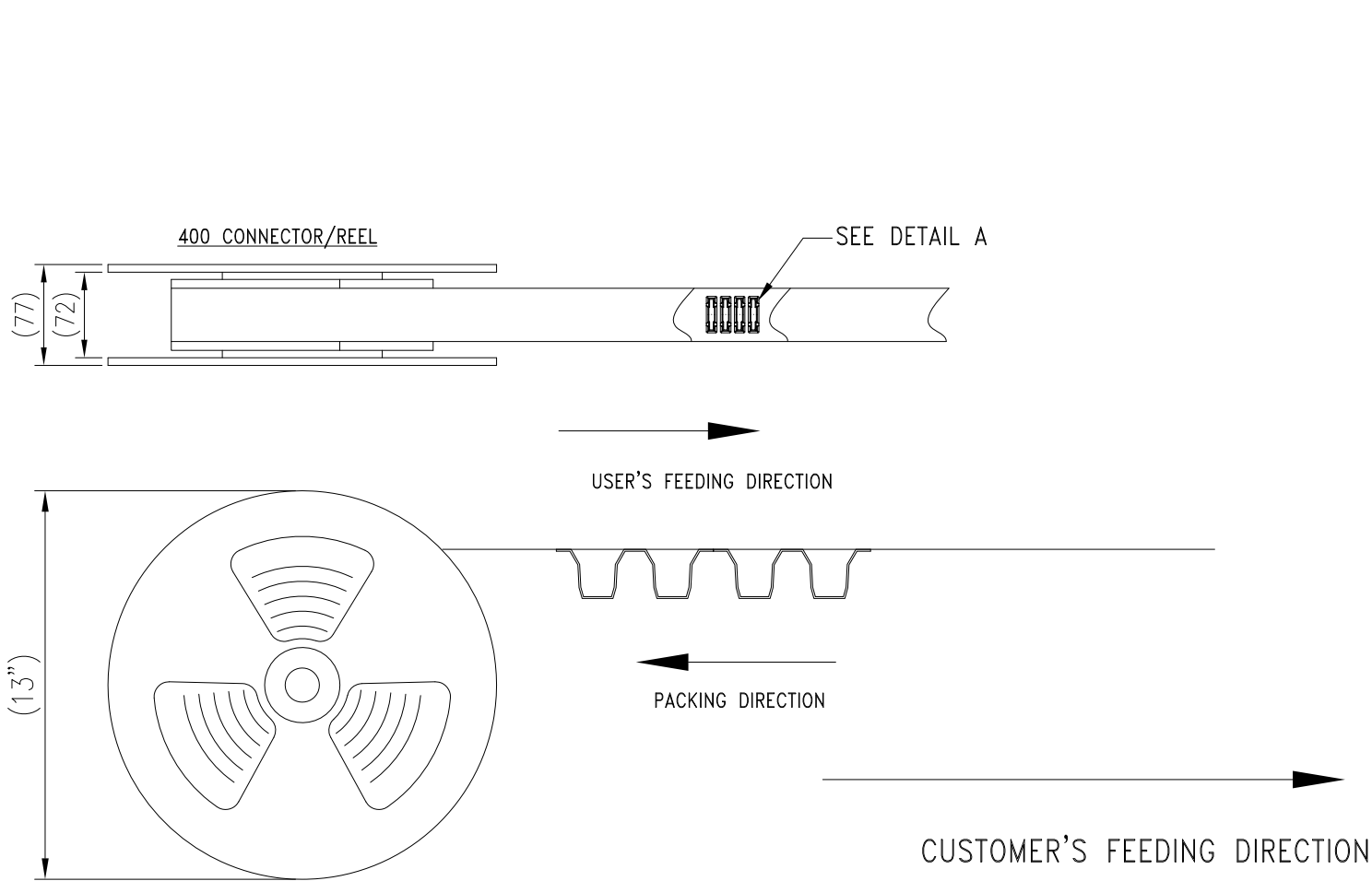
REVISIONS				
SYM	ECN	DESCRIPTION	DATE	APPROVED
REFER TO SHEET 1				

D

C

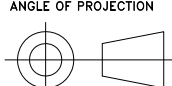
B

A



HF(无卤)	√
Non-HF(有卤)	



UNLESS OTHERWISE SPECIFIED TOLERANCES U.S. METRIC .X +/- 0.50 .XX +/- 0.25 .XXX +/- 0.20 FRACTIONS +/- 3" ANGLES +/- FOR MATERIALS AND FINISHES SEE NOTES REMOVE SHARP EDGES DIMENSIONS U.S. INCHES (METRIC) (MM)			APPROVAL		DATE		Amphenol Amphenol East Asia Limited		
			DRAWN Jackie.Tan		04/07'22				
			CHECKED Xiang.Wang		04/07'22				
			CHECKED						
			DRAWING FILE :				TITLE PCIe/SAS R/A SMT RECEPTACLE		
			\\DRAWING\PSAS\PSAS4F213020XXX-1						
			ANGLE OF PROJECTION						
					SIZE DRAWING NO.		REV.		
					A3 PSAS4F213020XXX		1		
					SCALE NONE		SHEET 3 OF 3		