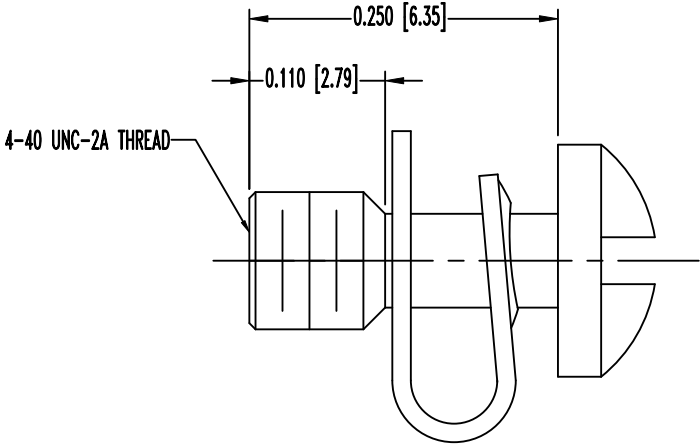
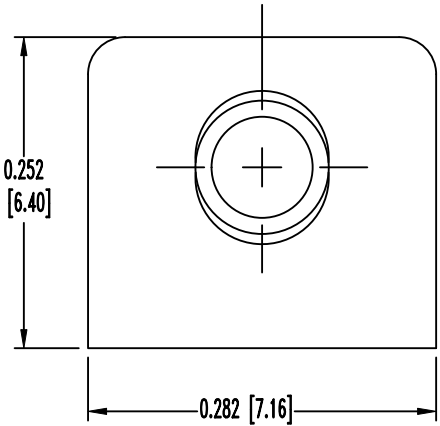


THIS DRAWING CONTAINS INFORMATION PROPRIETARY TO POSITRONIC AND ITS SUBSIDIARIES. POSITRONIC BELIEVES THE DATA ON THIS DRAWING TO BE RELIABLE. SINCE THE TECHNICAL INFORMATION IS GIVEN FREE OF CHARGE, THE USER EMPLOYS SUCH INFORMATION AT HIS OWN DISCRETION AND RISK. POSITRONIC ASSUMES NO RESPONSIBILITY FOR RESULTS OBTAINED OR DAMAGES INCURRED FROM USE OF SUCH INFORMATION IN WHOLE OR IN PART.

SK16869

DATE	REV	REVISION RECORD	APP	DR	CK
11-30 21	B	ECO 85457	PA	ND	AB



NOTES:

- MATERIALS AND FINISHES:
CAPTIVE SCREW: BRASS, 0.000050 [1.27 μ] GOLD OVER COPPER PLATE.
U-CLIP: BERYLLIUM COPPER, 0.000050 [1.27 μ] GOLD OVER COPPER PLATE.
- DETAILED PRODUCT, MECHANICAL, AND ELECTRICAL INFORMATION IS AVAILABLE IN THE LATEST SPACE-D PRODUCT PUBLICATION AT CONNECTPOSITRONIC.COM.
- PARTS ARE COMPLIANT TO THE CURRENT RoHS DIRECTIVE.
- DIMENSIONS ARE IN INCHES [MILLIMETERS].

		POSITRONIC INDUSTRIES INC. SPRINGFIELD, MISSOURI 65801	
		SCALE	DRAWN BY
DECIMAL TOL. ± 0.015 [0.38]		N.T.S.	MP
TITLE		APPROVED BY	
		COLE	
SND SERIES			
SND000000E2G/AA			
ANGULAR TOL. ± 5°	DATE	DRAWING NUMBER	REV.
	1-12-15	SK16869	B