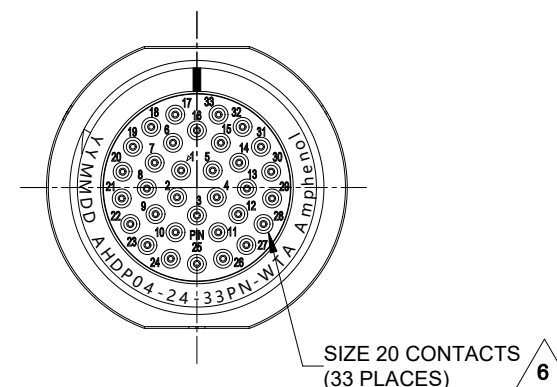


REVISIONS					
REV	ECO	DESCRIPTION	DATE	BY	APP
A1	--	RELEASE NEW DRAWING	17/JAN/24	LYNCH	TOMM



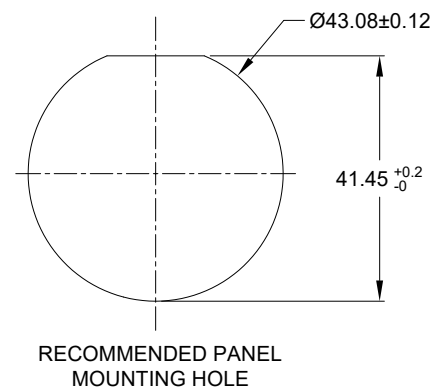
NOTES: UNLESS OTHERWISE SPECIFIED

1. MATERIAL:
HOUSING: THERMOPLASTIC; BLACK
SEAL: SILICONE RUBBER
2. MODIFICATIONS: THREADED ADAPTER (WTA);
NORMAL DIA. WIRE SEAL.
3. SPECIFICATIONS:
 - 3.1 OPERATING TEMPERATURE: -55°C TO +125°C.
 - 3.2 DIELECTRIC WITHSTANDING VOLTAGE: LESS THAN 2
MILLIAMPS CURRENT LEAKAGE @ 1500 VOLTS AC.
 - 3.3 INSULATION RESISTANCE: 1000 MEGOHM MIN @ 25°C.
 - 3.4 MOISTURE RESISTANCE:
IP68(1M OF WATER FOR A PERIOD OF 24 HOURS,MATED
CONDITION);
IP69K (MATED CONDITION)
 - 3.5 MATING CYCLE DURABILITY: 100 CYCLES
 - 3.6 RoHS COMPLIANT
4. MATING PART: AHDP06-24-33S*-XXX (*=SEAL TYPE, XXX=ALL
MODIFICATIONS)
5. ALL DIMENSIONS ARE FOR REFERENCE USE ONLY.

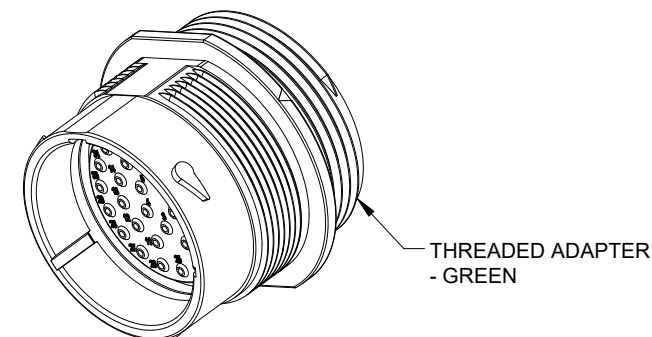
6 CONTACT SIZE AND WIRE RANGE:

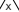

CONTACT SIZE	MIN. INSUL O.D.	MAX. INSUL O.D.	TYPICAL WIRE RANGE	CURRENT RATING
20	1.02 mm (.040 in)	2.41 mm (.095 in)	16-22 AWG (1.5-0.35mm ²)	7.5 AMPS

7. RECEPTACLE IS SUPPLIED WITH DUST CAP.



RECOMMENDED PANEL THICKNESS:1.6 TO 4.7MM



AHPD04-24-33PN-WTA		REF:HPD24-24-33PN-L024	
QUANTITY	PART NUMBER	DESCRIPTION	
MATERIALS LIST			
UNLESS OTHERWISE SPECIFIED 1) All dimensions are in metric(mm). 2) Tolerances are as follows: 1 PL DEC ± 0.50 2 PL DEC ± 0.10 3 PL DEC ± 0.08 Fractions $\pm 1/64$ Angles $\pm 1^\circ$ 3) Note reference = 		SIGNATURES DATE DRAWN: LYNCH PAN 17/JAN/24 CHECKED: SULLEN ZHANG 18/JAN/24 ENGINEER: APPROVAL: TOMMY XIE 19/JAN/24 CUSTOMER: THIS DRAWING IS SUPPLIED FOR INFORMATION ONLY. DESIGN FEATURES, SPECIFICATIONS AND PERFORMANCE DATA SHOWN HEREON ARE THE PROPERTY OF THE AMPHENOL CORPORATION. NO RIGHTS OF REPRODUCTION ARE IMPLIED. ALL DIMENSIONS ARE SUBJECT TO NORMAL MANUFACTURING VARIATIONS.	
MATERIAL SPECIFICATIONS: WEIGHT: 54.35g		<div style="text-align: center;">  Sine Systems - www.amphenol-sine.com 44724 Morley Drive Clinton Township, MI 48036 33POS, RECEPTACLE, PIN, SIZE 24, NORMAL SCALE, WTA, DURAMATE AHPD </div>	
PROCESS SPECIFICATIONS: NEXT ASSY:			
		SIZE C- TYPE DWG NO: <div style="font-size: 2em; font-weight: bold;">B</div> <div style="font-size: 2em; font-weight: bold;">AHPD04-24-33PN-WTA</div>	REV <div style="font-size: 2em; font-weight: bold;">A</div>
		SCALE: NONE	SHEET 1 OF 1