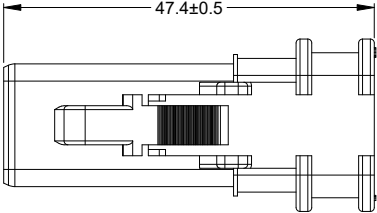
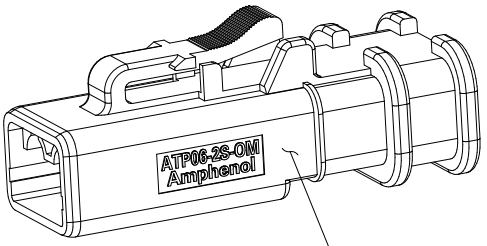
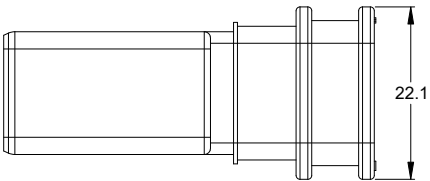
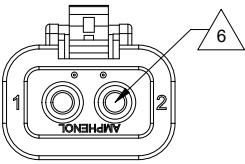
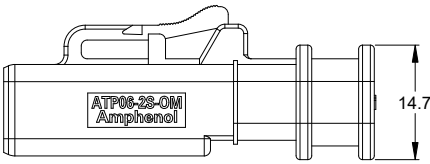
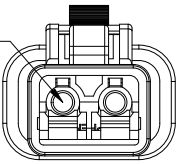


REVISIONS					
REV	ECO	DESCRIPTION	DATE	BY	APPR
A1	-	RELEASE DRAWING	31/JUL/24	KELIN	TOMMY



REQUIRES CONTACT
RETENTION WEDGE
AWP-2S



REFER TO PART NUMBER CHART FOR
AVAILABLE CONNECTOR COLORS

NOTES: UNLESS OTHERWISE SPECIFIED

- MATERIAL:
HOUSING: THERMOPLASTIC
SEAL: SILICONE RUBBER
- MODIFICATIONS: FOR OVER MOLDING
- SPECIFICATIONS:
3.1 CURRENT RATING: 25 AMPS
3.2 OPERATING TEMPERATURE: -55°C TO +125°C
3.3 DIELECTRIC WITHSTANDING VOLTAGE: LESS THAN 2 MILLIAMPS CURRENT LEAKAGE @ 1500 VOLTS AC.
3.4 INSULATION RESISTANCE: 1000 MEGOHMS MIN @ 25°C.
3.5 MOISTURE RESISTANCE:
IP68(IIM OF WATER FOR A PERIOD OF 24 HOURS,MATED CONDITION);
IP69K(MATED CONDITION).
3.6 MATING CYCLE DURABILITY: 100 CYCLES
3.7 RoHS COMPLIANT
- MATING PART: ATP04-2P* RECEPTACLE.
(* = MODIFICATIONS AND COLORS)

5. ALL DIMENSIONS ARE FOR REFERENCE USE ONLY.

6 CONTACT SIZE AND REAR SEAL WIRE RANGE:


STANDARD SEAL

CONTACT SIZE	MIN. INSUL O.D.	MAX. INSUL O.D.	TYPICAL WIRE RANGE
12	3.40 mm (.134 in)	4.95 mm (.195 in)	10 - 14 AWG (5.0-2.0mm ²)

REDUCED DIAMETER SEAL

CONTACT SIZE	MIN. INSUL O.D.	MAX. INSUL O.D.	TYPICAL WIRE RANGE
12	2.46 mm (.097 in)	4.01 mm (.158 in)	12 - 14 AWG (3.0-2.0mm ²)

PART NUMBER CHART		
COLOR	P/N W/ STD SEAL	P/N W/ RD SEAL
GREY	ATP06-2S-OMGRY	ATP06-2S-OMRDGRY
BLACK	ATP06-2S-OMBLK	ATP06-2S-OMRDBLK
BLUE	ATP06-2S-OMBLU	ATP06-2S-OMRDBLU
BROWN	ATP06-2S-OMBRN	ATP06-2S-OMRDBRN
GREEN	ATP06-2S-OMGRN	ATP06-2S-OMRDGRN
RED	ATP06-2S-OMRED	ATP06-2S-OMRDRED
WHITE	ATP06-2S-OMWHT	ATP06-2S-OMRDWHT
YELLOW	ATP06-2S-OMYEL	ATP06-2S-OMRDYEL

		SEE PART NUMBER CHART			
QUANTITY		PART NUMBER		DESCRIPTION	
				ITEM	
MATERIALS LIST					
UNLESS OTHERWISE SPECIFIED		SIGNATURES		DATE	
1) All dimensions are in metric(mm).		DRAWN:		KELIN.ZHONG	
2) Tolerances are as follows:		31/JUL/24			
1 PL DEC ±0.30		CHECKED:		SULLEN.ZHANG	
2 PL DEC ±0.15		01/AUG/24			
3 PL DEC ±0.08		ENGINEER:			
3) Note reference = 		APPROVAL:		TOMMY.XIE	
		02/AUG/24			
MATERIAL SPECIFICATIONS:		CUSTOMER:			
WEIGHT: 8.3g					
PROCESS SPECIFICATIONS:		THIS DRAWING IS SUPPLIED FOR INFORMATION ONLY. DESIGN FEATURES, SPECIFICATIONS AND PERFORMANCE DATA SHOWN HEREON ARE THE PROPERTY OF THE AMPHENOL CORPORATION. NO RIGHTS OF REPRODUCTION ARE IMPLIED. ALL DIMENSIONS ARE SUBJECT TO NORMAL MANUFACTURING VARIATIONS.			
NEXT ASSY:		SIZE		TYPE	
		B		C-	
		SCALE		NONE	
		DWG NO.		ATP06-2S-OMXXX	
		REVISION		A1	
		STRUCTURE+, OVERMOLD-COMPATIBLE PLUG, 2 SOCKET,ATP SERIES			
		SHEET		1 OF 1	