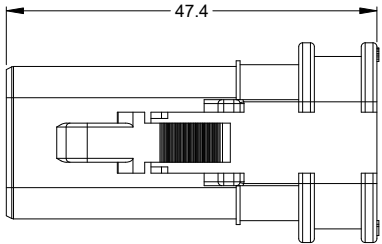
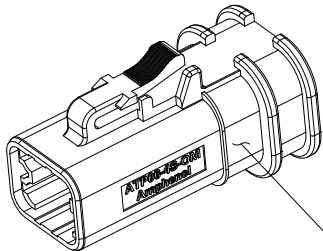
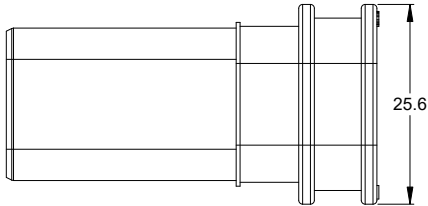
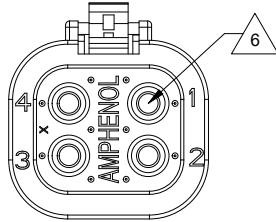
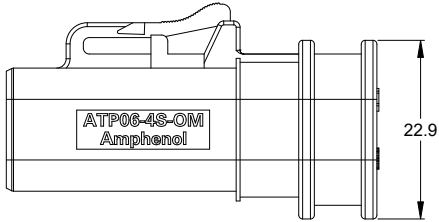
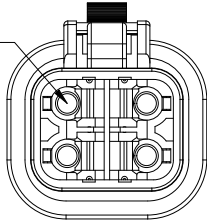


REVISIONS					
REV	ECO	DESCRIPTION	DATE	BY	APPR
A1	-	RELEASE DRAWING	12/JUL/24	KELIN	TOMMY



REQUIRES CONTACT
RETENTION WEDGE
AWP-4S



REFER TO PART NUMBER CHART FOR
AVAILABLE CONNECTOR COLORS

NOTES: UNLESS OTHERWISE SPECIFIED

- MATERIAL:
HOUSING: THERMOPLASTIC
SEAL: SILICONE RUBBER
- MODIFICATIONS: FOR OVER MOLDING
- SPECIFICATIONS:
3.1 CURRENT RATING: 25 AMPS
3.2 OPERATING TEMPERATURE: -55°C TO +125°C
3.3 DIELECTRIC WITHSTANDING VOLTAGE: LESS THAN 2
MILLIAMPS CURRENT LEAKAGE @ 1500 VOLTS AC.
3.4 INSULATION RESISTANCE: 1000 MEGOHMS MIN @ 25°C.
3.5 MOISTURE RESISTANCE:
IP68(1M OF WATER FOR A PERIOD OF 24 HOURS,MATED CONDITION);
IP69K(MATED CONDITION).
3.6 MATING CYCLE DURABILITY: 100 CYCLES
3.7 RoHS COMPLIANT
- MATING PART: ATP04-4P* RECEPTACLE.
(* = MODIFICATIONS AND COLORS)
- ALL DIMENSIONS ARE FOR REFERENCE USE ONLY.

△ 6 CONTACT SIZE AND REAR SEAL WIRE RANGE:


STANDARD SEAL

CONTACT SIZE	MIN. INSUL O.D.	MAX. INSUL O.D.	TYPICAL WIRE RANGE
12	3.40 mm (.134 in)	4.95 mm (.195 in)	10 - 14 AWG (5.0-2.0mm ²)

REDUCED DIAMETER SEAL

CONTACT SIZE	MIN. INSUL O.D.	MAX. INSUL O.D.	TYPICAL WIRE RANGE
12	2.46 mm (.097 in)	4.01 mm (.158 in)	12 - 14 AWG (3.0-2.0mm ²)

PART NUMBER CHART		
COLOR	P/N W/ STD SEAL	P/N W/ RD SEAL
GREY	ATP06-4S-OMGRY	ATP06-4S-OMRDGRY
BLACK	ATP06-4S-OMBLK	ATP06-4S-OMRDBLK
BLUE	ATP06-4S-OMBLU	ATP06-4S-OMRDBLU
BROWN	ATP06-4S-OMBRN	ATP06-4S-OMRDBRN
GREEN	ATP06-4S-OMGRN	ATP06-4S-OMRDGRN
RED	ATP06-4S-OMRED	ATP06-4S-OMRDRED
WHITE	ATP06-4S-OMWHT	ATP06-4S-OMRDWHT
YELLOW	ATP06-4S-OMYEL	ATP06-4S-OMRDYEL

		SEE PART NUMBER CHART							
QUANTITY		PART NUMBER		DESCRIPTION		ITEM			
MATERIALS LIST									
UNLESS OTHERWISE SPECIFIED		SIGNATURES		DATE		<div>Sine Systems - www.amphenol-sine.com 44724 Morley Drive Clinton Township, MI 48036</div>			
1) All dimensions are in metric(mm).		DRAWN:		KELIN.ZHONG				11/JUL/24	
2) Tolerances are as follows:		CHECKED:		SULLEN.ZHANG				12/JUL/24	
1 PL DEC ±0.30 2 PL DEC ±0.15 3 PL DEC ±0.08		ENGINEER:							
3) Note reference = 		APPROVAL:		TOMMY.XIE				12/JUL/24	
MATERIAL SPECIFICATIONS:		CUSTOMER:				STRUCTURE+, OVERMOLD-COMPATIBLE PLUG, 4 SOCKET,ATP SERIES			
WEIGHT: 13.0g									
PROCESS SPECIFICATIONS:						SIZE			
						TYPE			
						DWG NO.			
						REVISION			
						B			
						C-			
						ATP06-4S-OMXXX			
						A1			
NEXT ASSY:						SCALE			
						NONE			
						SHEET			
						1			
						OF			
						1			