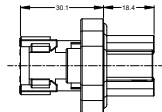
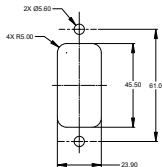
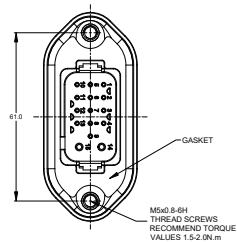
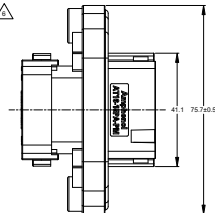
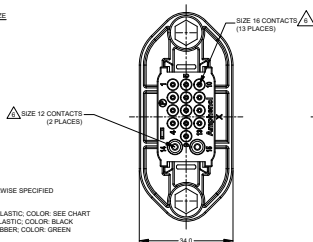


REVISIONS					
REV	ECO	DESCRIPTION	DATE	BY	APPR
A1	-	RELEASE NUMBER	03Feb/24	LUCAS	TOMMY



MOUNTING PLATE SIZE



NOTES: UNLESS OTHERWISE SPECIFIED

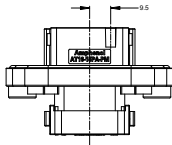
- MATERIAL:
HOUSING: THERMOPLASTIC; COLOR: SEE CHART
END CAP: THERMOPLASTIC; COLOR: BLACK
SEALS: SILICONE RUBBER; COLOR: GREEN
- MODIFICATIONS: FLANGE, GASKET, END CAP, REDUCED DIAMETER SEAL.
- SPECIFICATIONS:
3.1 CURRENT RATING: 13 AMPS
3.2 OPERATING TEMPERATURE: -55°C TO +125°C
3.3 DIELECTRIC WITHSTANDING VOLTAGE: LESS THAN 2 MILLIAMPS CURRENT LEAKAGE @ 1500 VOLTS AC.
3.4 INSULATION RESISTANCE: 1000 MEGOHMS MIN @ 25°C.
3.5 MOISTURE RESISTANCE:
IP68(1M OF WATER FOR A PERIOD OF 24 HOURS , MATED CONDITION)
IP69K(MATED CONDITION)
3.6 MATING CYCLE DURABILITY: 100 CYCLES
3.7 RoHS COMPLIANT
- MATING PART: AT16-15Bx-* PLUGS
(x=KEY WAY; * = MODIFICATIONS AND COLORS)
- ALL DIMENSIONS ARE FOR REFERENCE USE ONLY.

CONTACT SIZE AND REAR SEAL WIRE RANGE

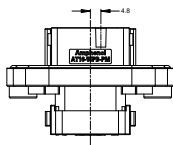
CONTACT SIZE	MIN. INSUL. O.D.	MAX. INSUL. O.D.	TYPICAL WIRE RANGE
12	2.46 mm (.097 in)	4.01 mm (.158 in)	10 - 14 AWG (3.0-2.0)
16	1.35 mm (.053 in)	3.05 mm (.120 in)	14 - 20 AWG (2.0-0.5)

AT16-15Px-PM11		PART NUMBER		DESCRIPTION		ITEM
QUANTITY		MATERIALS LIST				
UNLESS OTHERWISE SPECIFIED: 1) All dimensions are in inches (mm). 2) Tolerances are as follows: 1 PL DEC ±0.15 2 PL DEC ±0.15 3 PL DEC ±0.15 3) Note reference in		SIGNATURE		DATE		 Site Systems - www.amphenol-site.com 44724 Morley Drive Clinton Township, MI 48036
DESIGNED BY		LUCAS		03Feb/24		
CHECKED BY		ORON		04Feb/24		
APPROVED BY		TOMMY		18Feb/24		
MATERIAL SPECIFICATIONS		THIS DRAWING IS SUPPLIED FOR INFORMATION ONLY. DESIGN, MATERIAL SPECIFICATIONS AND PERFORMANCE DATA SHALL REMAIN THE PROPERTY OF THE AMPHENOL CORPORATION. NO PARTS OR SUBASSEMBLIES ARE TO BE MANUFACTURED OR USED WITHOUT THE WRITTEN PERMISSION OF THE AMPHENOL CORPORATION.		15 POSITION, RECEPTACLE, PIN, PANELMATE AT SERIES		B C- AT16-15Px-PM11
PROCESS SPECIFICATIONS		REVISION		DATE		
TEST DATA		REVISION		DATE		
REVISION		NONE		SHEET 1 OF 2		A1

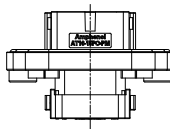
REVISIONS					
REV	ECO	DESCRIPTION	DATE	BY	APPR
A1	-	RELEASE NUMBER	03/Feb/24	LUCAS	TOMMY



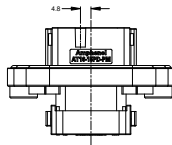
KEY A	
PART NUMBER	COLOR
AT16-15PA-PM11	GRAY



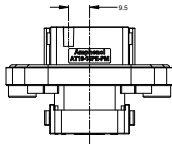
KEY B	
PART NUMBER	COLOR
AT16-15PB-PM11	BLACK



KEY C	
PART NUMBER	COLOR
AT16-15PC-PM11	GREEN



KEY D	
PART NUMBER	COLOR
AT16-15PD-PM11	BROWN



KEY E	
PART NUMBER	COLOR
AT16-15PE-PM11	GRAY

AT16-15Px-PM11		DESCRIPTION		ITEM
PART NUMBER				
QUANTITY				
MATERIALS LIST				
UNLESS OTHERWISE SPECIFIED		SIGNATURES DATE		
1) All dimensions are in inches (mm).		DESIGN: LUCAS	03/Feb/24	
2) Tolerances are as follows:		CHECKED: ORON	04/Feb/24	
1 PL DEC +0.30		PROCESSOR:		
2 PL DEC +0.15		APPROVAL: TOMMY		
3 PL DEC +0.08		DATE: 18/Feb/24		
3) Note reference =		CUSTOMER:		
MATERIAL SPECIFICATIONS		THIS DRAWING IS SUPPLIED FOR INFORMATION ONLY. DESIGN FEATURES, SPECIFICATIONS AND PERFORMANCE DATA SHOWN HEREON ARE THE PROPERTY OF THE APPROVED COMPANY. ALL RIGHTS OF REPRODUCTION ARE RESERVED. ALL MANUFACTURING ARE SUBJECT TO NORMAL MANUFACTURING VARIATIONS.		
PROCESS SPECIFICATIONS		15 POSITION, RECEPTACLE, PIN, PANELMATE AT SERIES		
TEXT ADDED		RELEASE TYPE: B C- DWG NO: AT16-15Px-PM11 REVISION: A1 SHEET: 2 OF 2		