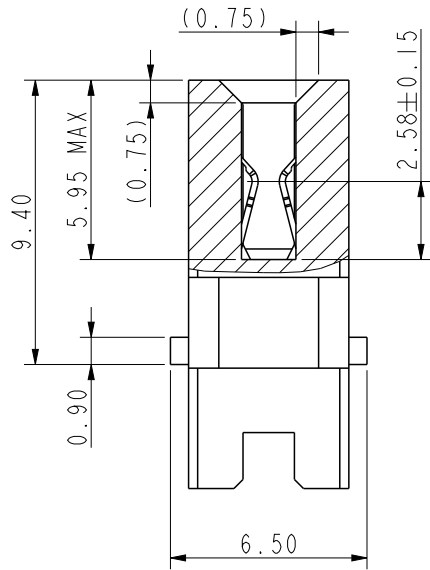
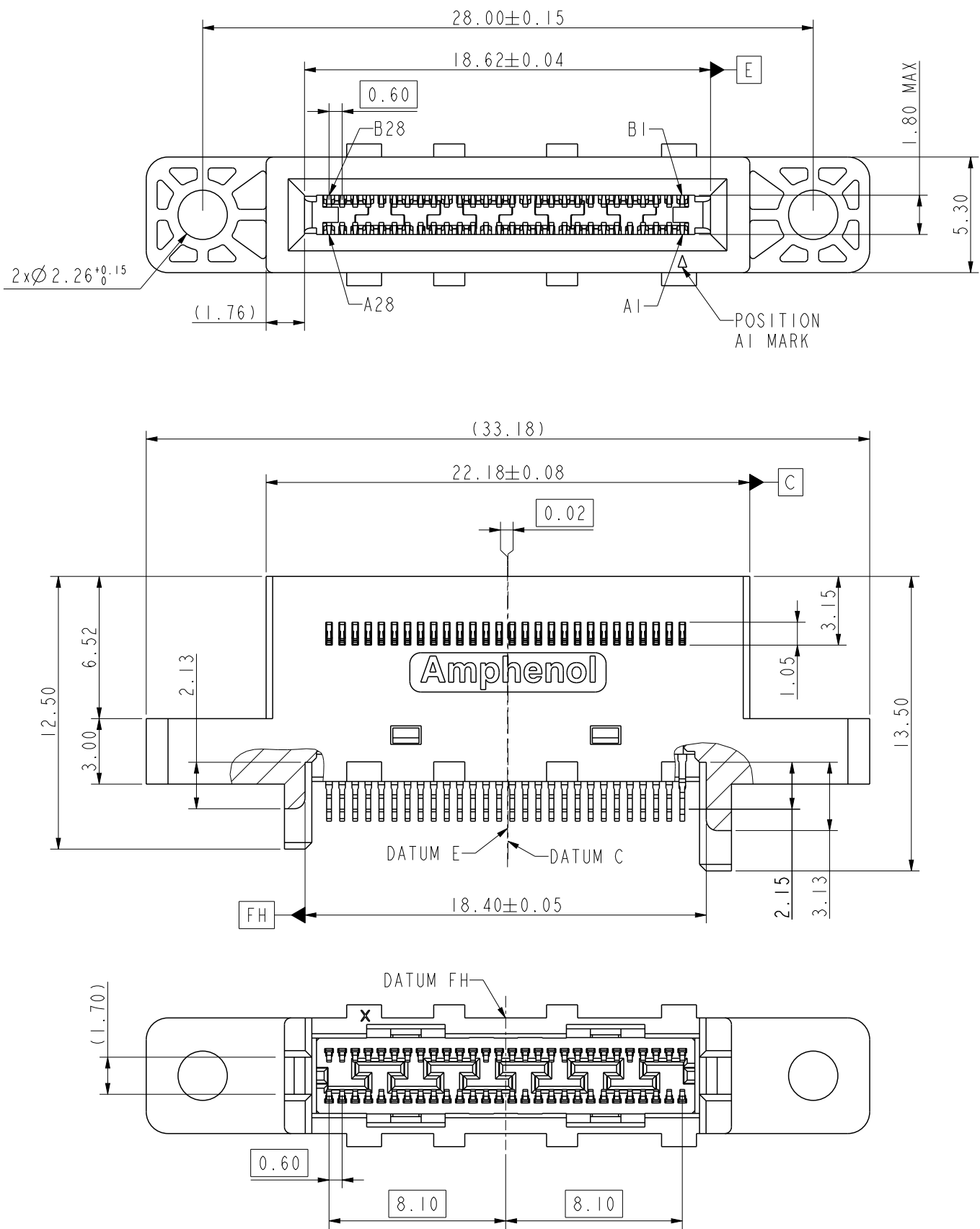
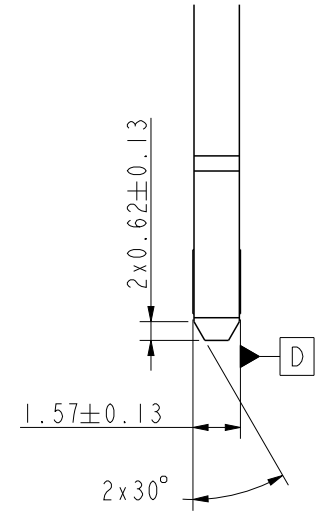
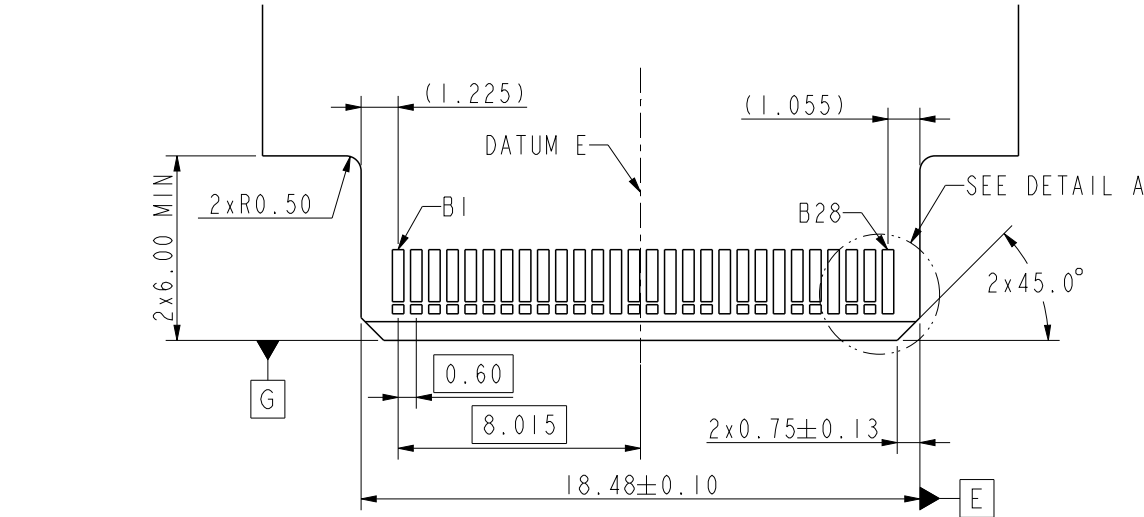


revision history				
rev	ecn no	description	dr	date
I	ELX-CD-XXXX-I	PROPOSAL	YX	2023/02/10
A	ELX-CD-53709-I	FIRST RELEASE	YX	2023/02/10

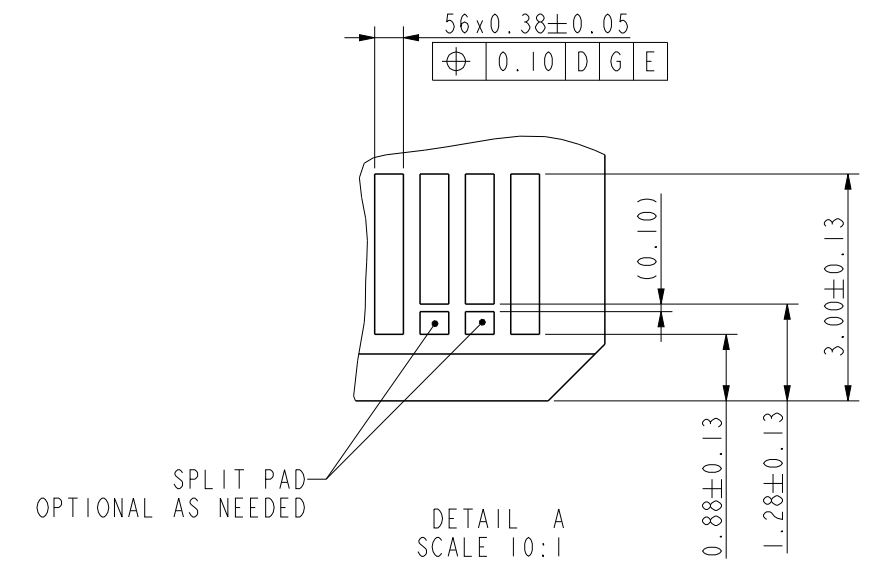
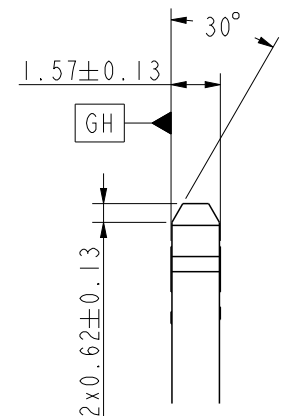
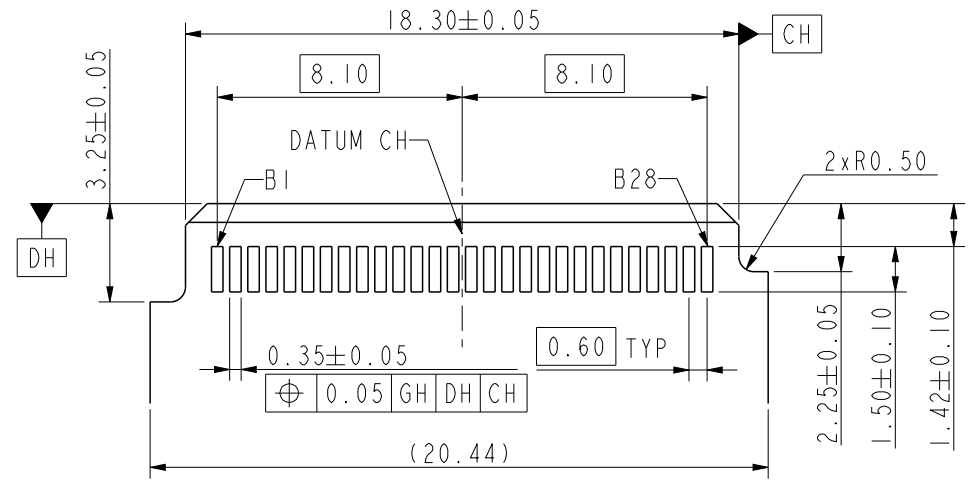
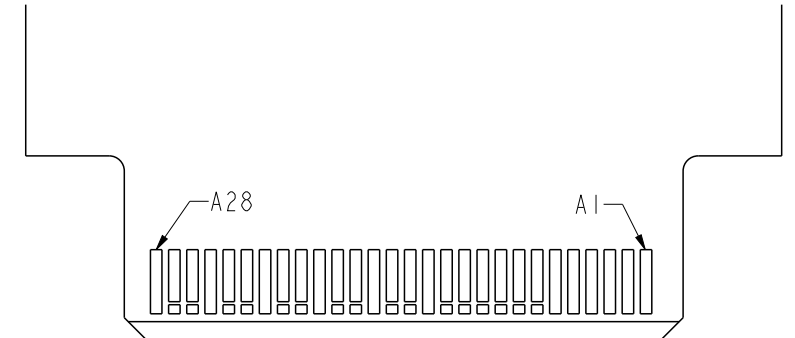
- NOTES:
- MATERIAL:
HOUSING: HIGH TEMPERATURE THERMOPLASTIC, BLACK, UL94-V0
CONTACT: COPPER ALLOY
 - FINISHED:
CONTACT: MATING AREA: 1.27um MIN Au PLATED OVER 1.27um MIN NICKEL UNDERPLATED
SOLDER AREA: 1.27um MIN TIN OVER 1.27um MIN NICKEL UNDERPLATED
 - ELECTRICAL PERFORMANCE:
RATED CURRENT: 1.1A/PIN UP TO 12PINS FOR SIGNAL PIN
LLCR: DELTA 15mΩ MAX
INSULATION RESISTANCE: 1000MΩ MIN
 - MECHANICAL PERFORMANCE:
DURABILITY: 200 CYCLES.
MATING FORCE: 30.8N MAX
UNMATING FORCE: 2.8N MIN
 - MATERIAL SHOULD BE FULFILLED AMPHENOL SPEC S-SN-002
FOR HALOGEN FREE PRODUCTS, ALSO NEED TO MEET # S-SN-004.
 - PACKING IN TRAY
 - ORDERING P/N: ME1005634478101.



spec ref				dr		Yunx Liu		2024/12/02		<div>Amphenol</div>				<div>mm</div>		scale		4:1		size		A3			
tolerance std		TOLERANCES UNLESS OTHERWISE SPECIFIED		eng		Yunx Liu		2024/12/03						amphenol-icc.com				ecn no							
				rvwr		Van Cheng		2024/12/03										rel levelReleased							
				appr		LY Yi		2024/12/03																	
surface		<div>✓</div>		linear		0.X		±0.50		projection		title		MINI COOL EDGE 56PIN S/M		dwg no		CME1005634478101		rev		A			
						0.XX		±0.25																	
						0.XXX		±0.15																	
						angular		0°																±5°	

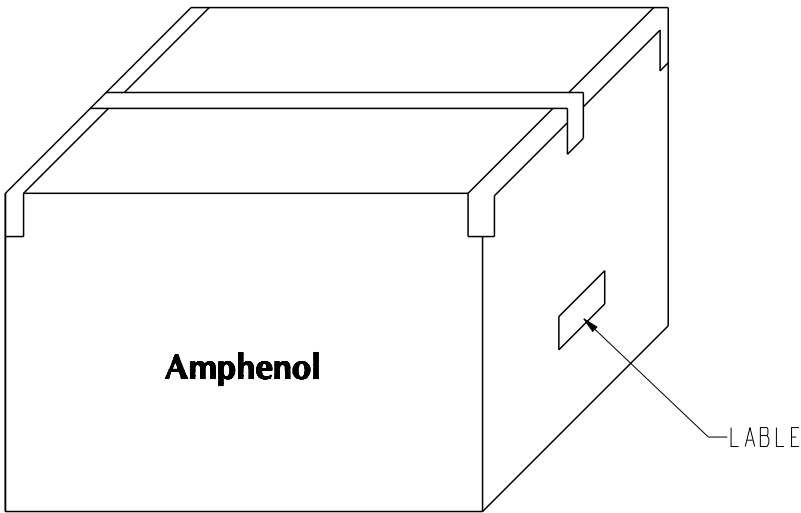
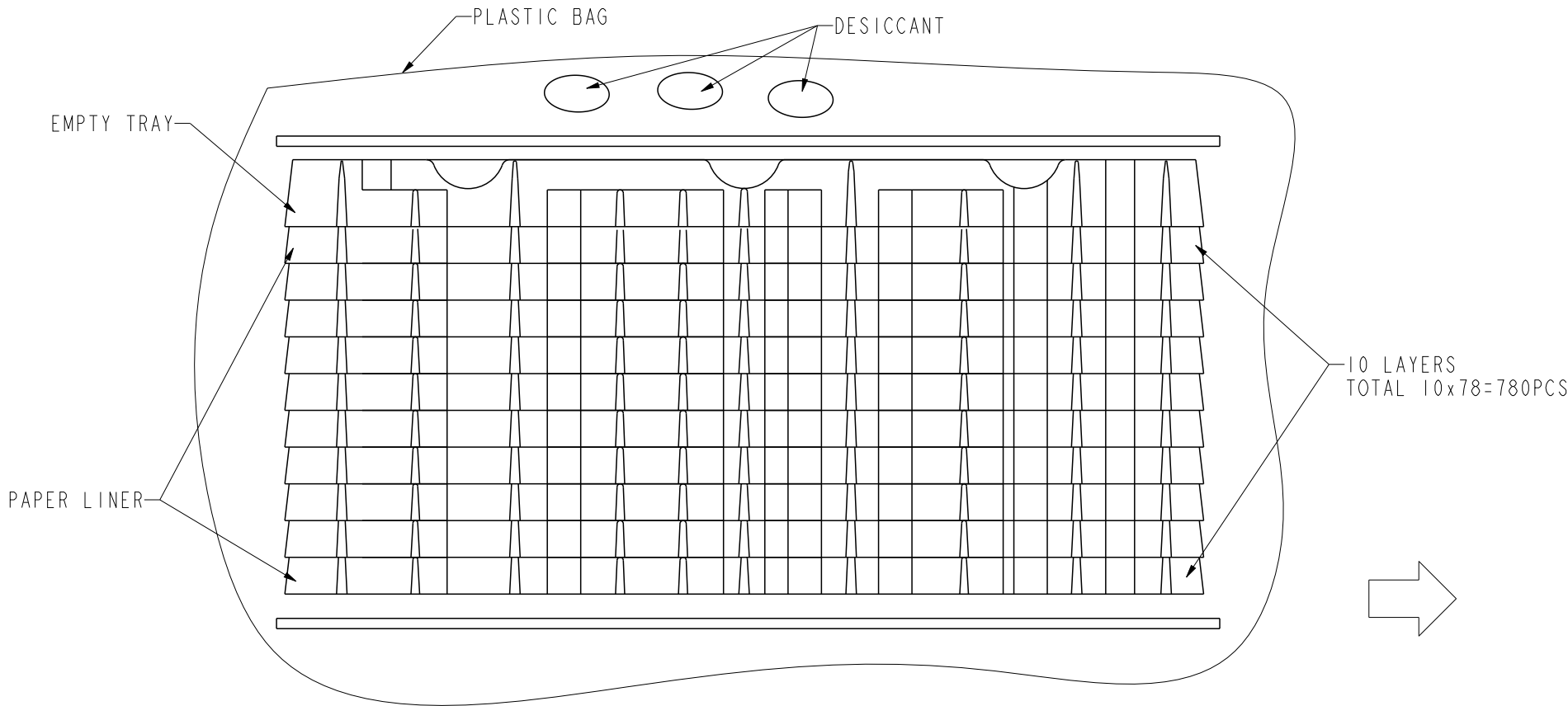


AIC MATING CARD

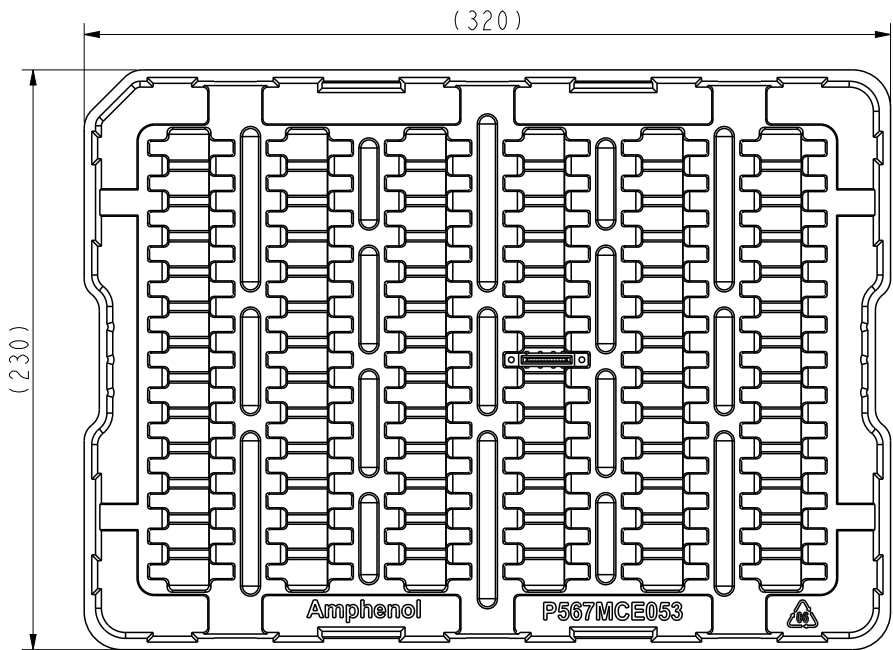


NOTE: POSITION A1 ON THE OPPOSITE SIDE OF CARD OF B1
RECOMMENDED FOOTPRINT

spec ref				dr		Yunx Liu		2024/12/02		<div>Amphenol</div>				<div>mm</div>		scale		4:1		size		A3			
tolerance std				TOLERANCES UNLESS OTHERWISE SPECIFIED				eng						Yunx Liu		2024/12/03		ecn no							
								rvwr						Van Cheng		2024/12/03		rel levelReleased							
								appr						LY Yi		2024/12/03									
										amphenol-icc.com															
surface				<div>linear</div> <div>0.X</div> <div>±0.50</div> <div>0.XX</div> <div>±0.25</div> <div>0.XXX</div> <div>±0.15</div> <div>angular</div> <div>0°</div> <div>±5°</div>				<div>projection</div> <div></div> <div>title</div> <div>MINI COOL EDGE 56PIN S/M</div> <div>MAT 1.57 HOST PCB CABLE END,P/M</div> <div>product family</div>				<div>dwg no</div> <div>CME1005634478101</div> <div>cat. no.</div>				rev				A					
																sheet 2 of 3									



780 CONNECTORS / CARTON



spec ref				dr		Yunx Liu	2024/12/02	<div>Amphenol</div>				<div>mm</div>		scale	4:1	size	A3																																																																																																																																																																																																																																																																																																																																																																																																																																																																																																																																																																																																																																																																																																																																																																																																																																																																																																																																																																																																																																																																																																																																																																																																																																										
tolerance std				TOLERANCES UNLESS OTHERWISE SPECIFIED								eng		Yunx Liu	2024/12/03	ecn no																																																																																																																																																																																																																																																																																																																																																																																																																																																																																																																																																																																																																																																																																																																																																																																																																																																																																																																																																																																																																																																																																																																																																																																																																																											
												r vwr		Van Cheng	2024/12/03																																																																																																																																																																																																																																																																																																																																																																																																																																																																																																																																																																																																																																																																																																																																																																																																																																																																																																																																																																																																																																																																																																																																																																																																																																												
												appr		LY Yi	2024/12/03	amphenol-icc.com				rel level					Released																																																																																																																																																																																																																																																																																																																																																																																																																																																																																																																																																																																																																																																																																																																																																																																																																																																																																																																																																																																																																																																																																																																																																																																																																																		
surface				linear		0.X		±0.50		projection		title		MINI COOL EDGE 56PIN S/M				diag no		CME1005634478101				rev																																																																																																																																																																																																																																																																																																																																																																																																																																																																																																																																																																																																																																																																																																																																																																																																																																																																																																																																																																																																																																																																																																																																																																																																																																			
						0.XX		±0.25																																																																																																																																																																																																																																																																																																																																																																																																																																																																																																																																																																																																																																																																																																																																																																																																																																																																																																																																																																																																																																																																																																																																																																																																																																																			
						0.XXX		±0.15																																																																																																																																																																																																																																																																																																																																																																																																																																																																																																																																																																																																																																																																																																																																																																																																																																																																																																																																																																																																																																																																																																																																																																																																																																																			
						angular		0°																		±5°																																																																																																																																																																																																																																																																																																																																																																																																																																																																																																																																																																																																																																																																																																																																																																																																																																																																																																																																																																																																																																																																																																																																																																																																																																	