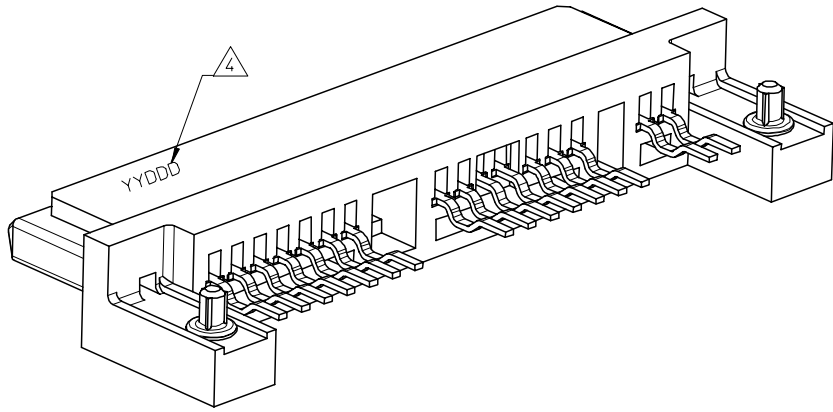
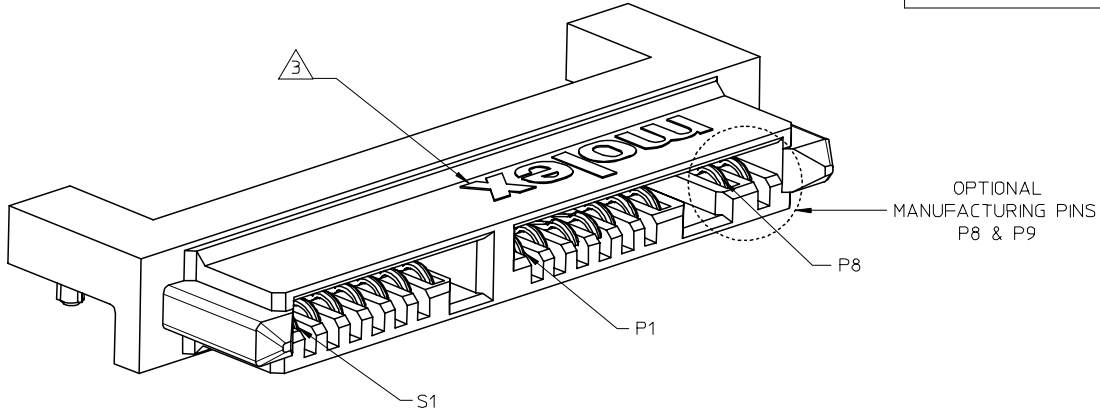


10 9 8 7 6 5 4 3 2 1

PART NUMBER	TOTAL PINS	DESCRIPTION
78109-0001	16	WITH OPTIONAL MANUFACTURING PINS (S1 TO S7 & P1 TO P9)
78109-1001	14	WITHOUT OPTIONAL MANUFACTURING PINS (S1 TO S7 & P1 TO P7)



NOTES:

- MATERIAL : NYLON (PA) 9T, GLASS FILLED, UL 94V-0, BLACK
TERMINAL/LOCATING PIN : COPPER ALLOY
- PLATING :
TERMINAL : 0.76µm MIN. SELECTIVE GOLD OVER
1.27µm MIN. NICKEL UNDERPLATE
: 2.54µm MIN. TIN OVER
1.27µm MIN. NICKEL UNDERPLATE
LOCATING PIN : 3.81µm MIN. TIN OVER
2.00µm MIN. NICKEL UNDERPLATE
- MOLEX LOGO LOCATED APPROXIMATELY AS SHOWN
- DATE CODE LOCATED APPROXIMATELY AS SHOWN
- PACKAGING : TRAY
- THIS PRODUCT IS COMPLIANT TO RoHS DIRECTIVE WITH THE FOLLOWING BANNED SUBSTANCES - LEAD, MERCURY, CADMIUM, HEXAVALENT CHROMIUM, POLYBROMINATED BIPHENYLS AND POLYBROMINATED DIPHENYLS ETHERS.
- NON FUNCTIONAL CORING MAY VARY.

THIS DESIGN IS BASED ON DESIGN OBJECTIVES AND IS STRICTLY TENTATIVE. IT MAY CHANGE BASED ON RESULTS OF ADDITIONAL DESIGN REVIEWS & VERIFICATIONS.

CHANGE MATERIAL	DESCRIPTION
EC NO: S2007-0403	2006/10/25
DRWN:YKOH	2006/10/30
CHKD:CGTAN	2006/10/30
APPR:KCLING	2006/10/30
4	REV

QUALITY SYMBOLS	▽=0
	△=0

GENERAL TOLERANCES (UNLESS SPECIFIED)	
	INCH
4 PLACES	± .005
3 PLACES	± .004
2 PLACES	± .003
1 PLACE	± .002
ANGULAR ± 3°	

DIMENSION STYLE	
MM ONLY	
DRAWN BY	DATE
YKOH	2006/06/27
CHECKED BY	DATE
SHONG	2006/07/28
APPROVED BY	DATE
KCLING	2006/07/28
MATERIAL NO.	
SEE TABLE	
SIZE	A3

SCALE	DESIGN UNITS	THIRD ANGLE PROJECTION
NTS	METRIC	☉ □
TITLE		
SERIAL ATA RECEPTACLE		
1.8 INCH HDD		
RIGHT-ANGLE, SMT		
MOLEX INCORPORATED		
MATERIAL NO.	DOCUMENT NO.	SHEET NO.
	SD-78109-001	1 OF 5
THIS DRAWING CONTAINS INFORMATION THAT IS PROPRIETARY TO MOLEX INCORPORATED AND SHOULD NOT BE USED WITHOUT WRITTEN PERMISSION		

9 8 7 6 5 4 3 2 1

10 9 8 7 6 5 4 3 2 1

F

E

D

C

B

A

F

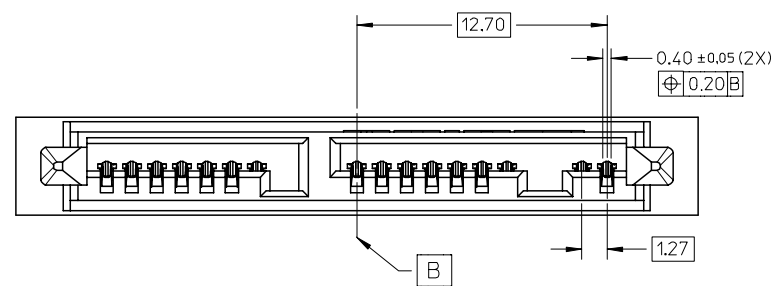
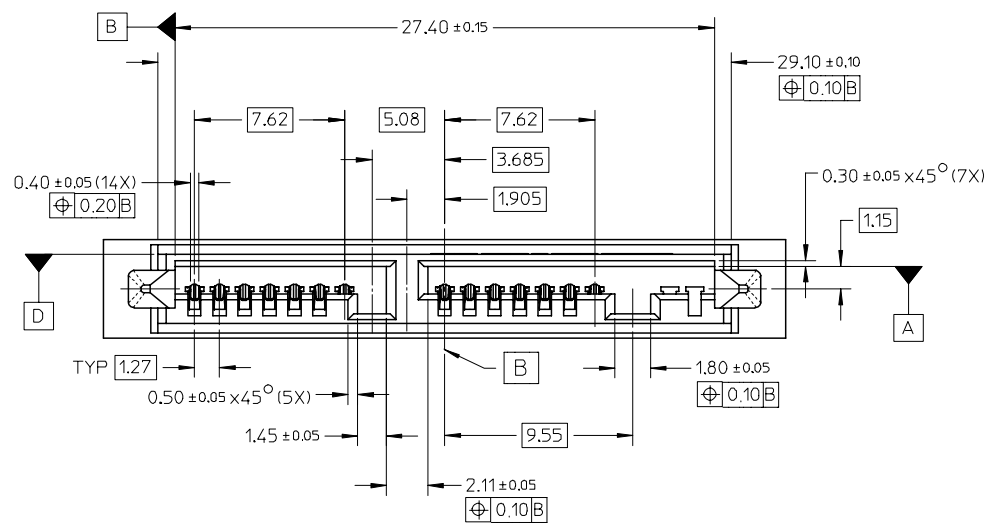
E

D

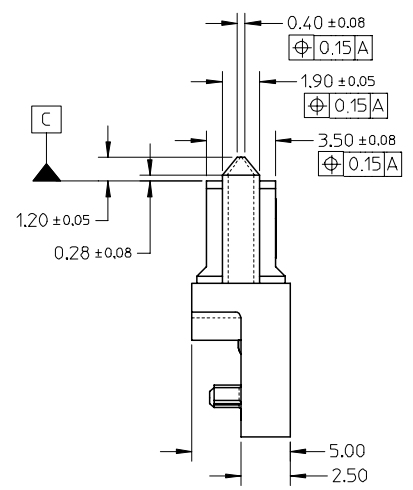
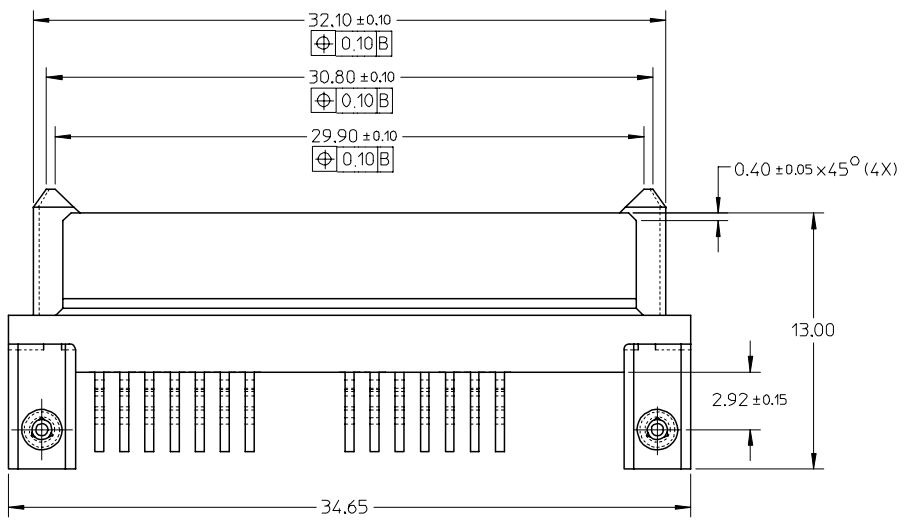
C

B

A



78109-0001



THIS DESIGN IS BASED ON DESIGN OBJECTIVES AND IS STRICTLY TENTATIVE. IT MAY CHANGE BASED ON RESULTS OF ADDITIONAL DESIGN REVIEWS & VERIFICATIONS.

CHANGE MATERIAL	DESCRIPTION
EC NO: S2007-0403	2006/10/25
DRWN:YKOH	2006/10/30
CHKD:CGTAN	2006/10/30
APPR:KCLING	2006/10/30
4	REV

QUALITY SYMBOLS
▽=0
△=0

GENERAL TOLERANCES (UNLESS SPECIFIED)	
mm	INCH
4 PLACES ± ---	± ---
3 PLACES ± ---	± ---
2 PLACES ± 0.20	± ---
1 PLACE ± ---	± ---
ANGULAR ± 3 °	
DRAFT WHERE APPLICABLE MUST REMAIN WITHIN DIMENSIONS	

DIMENSION STYLE	
MM ONLY	
DRAWN BY	DATE
YKOH	2006/06/27
CHECKED BY	DATE
SHONG	2006/07/28
APPROVED BY	DATE
KCLING	2006/07/28
MATERIAL NO.	
SEE TABLE	
SIZE	A3

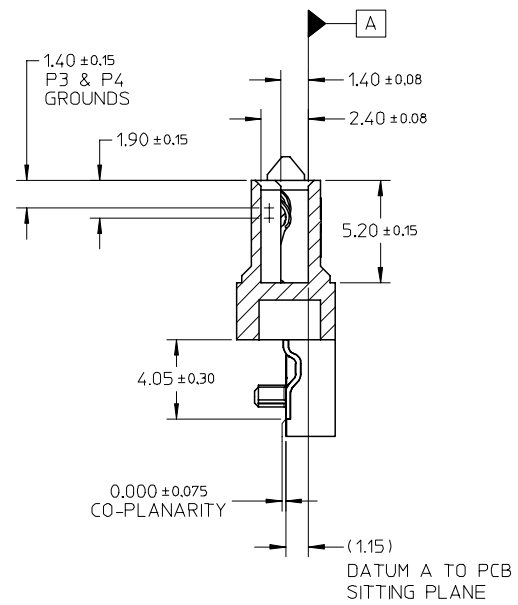
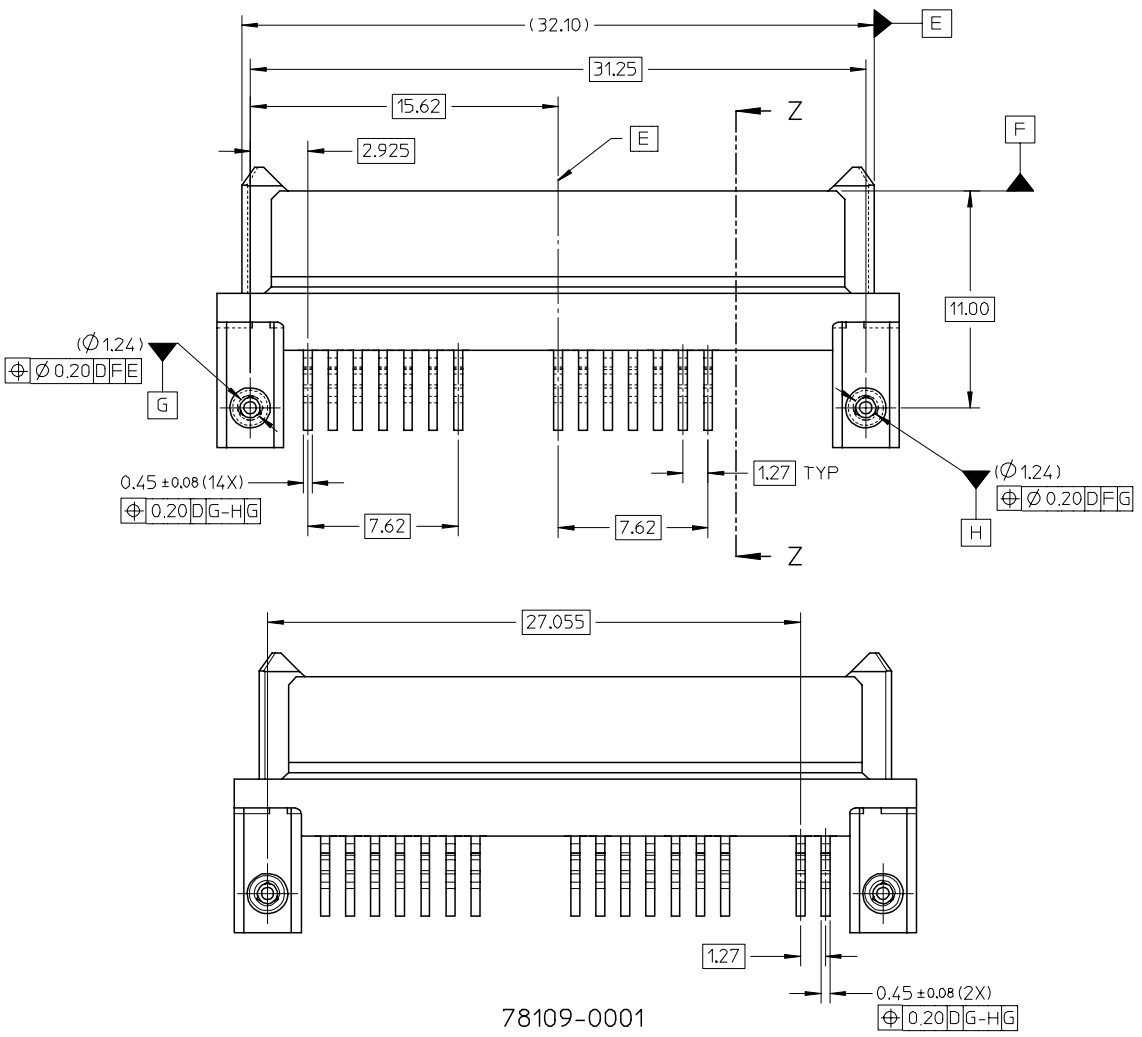
SCALE	DESIGN UNITS	THIRD ANGLE PROJECTION
NTS	METRIC	☉
TITLE		
SERIAL ATA RECEPTACLE		
1.8 INCH HDD		
RIGHT-ANGLE, SMT		
MOLEX INCORPORATED		
DOCUMENT NO.		SHEET NO.
SD-78109-001		2 OF 5
THIS DRAWING CONTAINS INFORMATION THAT IS PROPRIETARY TO MOLEX INCORPORATED AND SHOULD NOT BE USED WITHOUT WRITTEN PERMISSION		

9 8 7 6 5 4 3 2 1

10 9 8 7 6 5 4 3 2 1

F
E
D
C
B
A

F
E
D
C
B
A



SECTION Z-Z

78109-0001

THIS DESIGN IS BASED ON DESIGN OBJECTIVES AND IS STRICTLY TENTATIVE. IT MAY CHANGE BASED ON RESULTS OF ADDITIONAL DESIGN REVIEWS & VERIFICATIONS.

CHANGE MATERIAL	DESCRIPTION
EC NO: S2007-0403	2006/10/25
DRWN:YKH	2006/10/30
CHKD:GTAN	2006/10/30
APPR:KCLING	2006/10/30
REV	DESCRIPTION
4	

QUALITY SYMBOLS	▽=0
	∇=0

GENERAL TOLERANCES (UNLESS SPECIFIED)		
	mm	INCH
4 PLACES	± ---	± ---
3 PLACES	± ---	± ---
2 PLACES	± 0.20	± ---
1 PLACE	± ---	± ---
ANGULAR ± 3 °		
DRAFT WHERE APPLICABLE MUST REMAIN WITHIN DIMENSIONS		

DIMENSION STYLE		SCALE	DESIGN UNITS	THIRD ANGLE PROJECTION
MM ONLY		NTS	METRIC	
DRAWN BY	DATE	TITLE		
YKOH	2006/06/27	SERIAL ATA RECEPTACLE		
CHECKED BY	DATE	1.8 INCH HDD		
SHONG	2006/07/28	RIGHT-ANGLE, SMT		
APPROVED BY	DATE	MOLEX INCORPORATED		
KCLING	2006/07/28	MOLEX INCORPORATED		
MATERIAL NO.		DOCUMENT NO.	SHEET NO.	
SEE TABLE		SD-78109-001	3 OF 5	

THIS DRAWING CONTAINS INFORMATION THAT IS PROPRIETARY TO MOLEX INCORPORATED AND SHOULD NOT BE USED WITHOUT WRITTEN PERMISSION

9 8 7 6 5 4 3 2 1

10 9 8 7 6 5 4 3 2 1

F

F

E

E

D

D

C

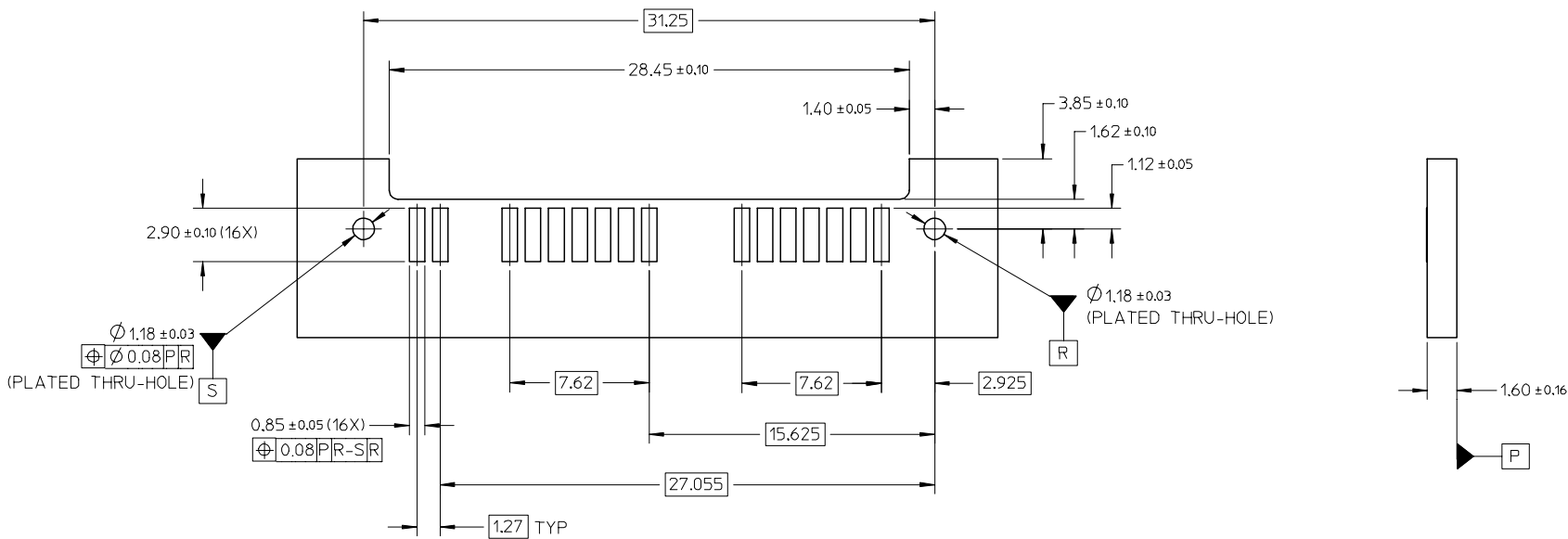
C

B

B

A

A



RECOMMENDED PCB LAYOUT

THIS DESIGN IS BASED ON DESIGN OBJECTIVES AND IS STRICTLY TENTATIVE. IT MAY CHANGE BASED ON RESULTS OF ADDITIONAL DESIGN REVIEWS & VERIFICATIONS.

CHANGE MATERIAL EC NO: S2007-0403 DRWN:YKOH CHKD:CGTAN APPR:KCLING	2006/10/25	DESCRIPTION REV
	2006/10/30	
	2006/10/30	
	2006/10/30	

QUALITY SYMBOLS	▽=0
	▽=0

GENERAL TOLERANCES (UNLESS SPECIFIED)		
	mm	INCH
4 PLACES	± ---	± ---
3 PLACES	± ---	± ---
2 PLACES	± 0.20	± ---
1 PLACE	± ---	± ---
ANGULAR ± 3 °		
DRAFT WHERE APPLICABLE MUST REMAIN WITHIN DIMENSIONS		

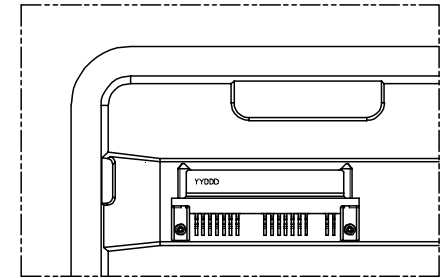
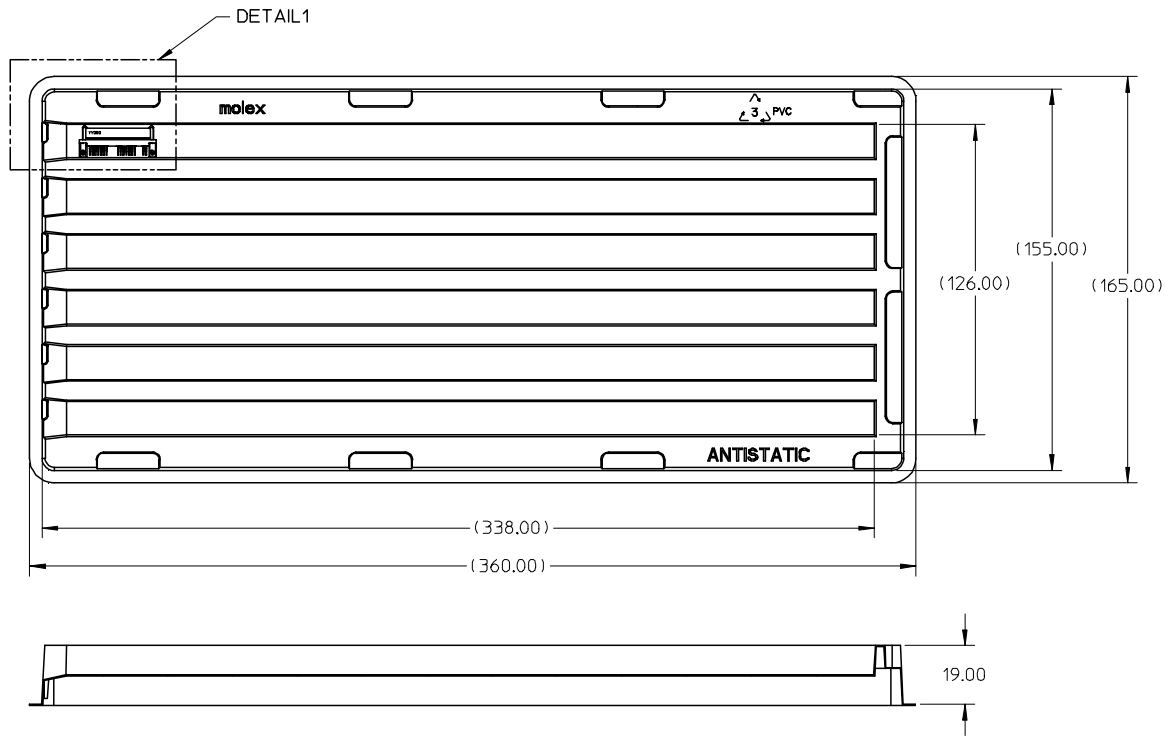
DIMENSION STYLE MM ONLY	
DRAWN BY YKOH	DATE 2006/06/27
CHECKED BY SHONG	DATE 2006/07/28
APPROVED BY KCLING	DATE 2006/07/28
MATERIAL NO.	
SEE TABLE	
SIZE A3	

SCALE NTS	DESIGN UNITS METRIC	THIRD ANGLE PROJECTION
TITLE SERIAL ATA RECEPTACLE 1.8 INCH HDD RIGHT-ANGLE, SMT		
MOLEX INCORPORATED		
DOCUMENT NO. SD-78109-001	SHEET NO. 4 OF 5	
THIS DRAWING CONTAINS INFORMATION THAT IS PROPRIETARY TO MOLEX INCORPORATED AND SHOULD NOT BE USED WITHOUT WRITTEN PERMISSION		

9 8 7 6 5 4 3 2 1

10 9 8 7 6 5 4 3 2 1

PACKAGING INFORMATION



NOTES:

1. PACKAGING QUANTITY : 54 PCS PER TRAY
2. MATERIAL : PVC - CLEAR, ANTISTATIC
0.70MM THICK (PRE-FORMED)

THIS DESIGN IS BASED ON DESIGN OBJECTIVES AND IS STRICTLY TENTATIVE. IT MAY CHANGE BASED ON RESULTS OF ADDITIONAL DESIGN REVIEWS & VERIFICATIONS.

CHANGE MATERIAL EC NO: S2007-0403 DRWN:YKOH 2006/10/25 CHKD:CGTAN 2006/10/30 APPR:KCLING 2006/10/30	QUALITY SYMBOLS ▽=0 ◻=0	GENERAL TOLERANCES (UNLESS SPECIFIED)		DIMENSION STYLE MM ONLY		SCALE NTS	DESIGN UNITS METRIC	THIRD ANGLE PROJECTION		
		4 PLACES	± ---	± ---	DRAWN BY	DATE	SERIAL ATA RECEPTACLE 1.8 INCH HDD RIGHT-ANGLE, SMT			
		3 PLACES	± ---	± ---	CHECKED BY	DATE				
		2 PLACES	± 0.20	± ---	1 PLACE	± ---	± ---	APPROVED BY	DATE	MOLEX INCORPORATED
ANGULAR ± 3 °		DRAFT WHERE APPLICABLE MUST REMAIN WITHIN DIMENSIONS		SEE TABLE	MATERIAL NO.	DATE	DOCUMENT NO.	SHEET NO.		
4	REV			SIZE	THIS DRAWING CONTAINS INFORMATION THAT IS PROPRIETARY TO MOLEX INCORPORATED AND SHOULD NOT BE USED WITHOUT WRITTEN PERMISSION					

9 8 7 6 5 4 3 2 1