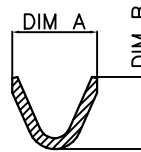
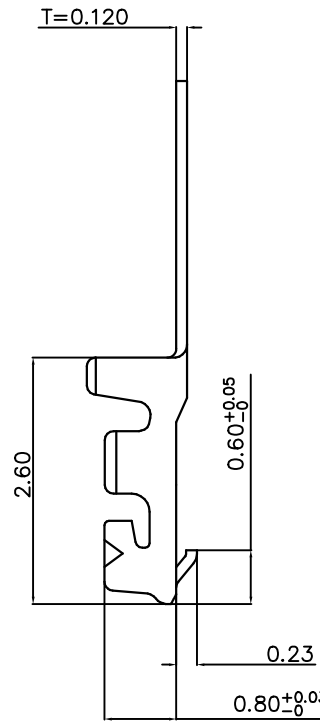
SECTION: A-A  
SCALE: 1:1SECTION: B-B  
SCALE: 1:1

## NOTE:

- 1.MATERIAL: PHOSPHOR BRONZE,  $t=0.12\text{mm}$
- 2.APPLICABLE WIRE RANGE:
  - 2-1. WIRE RANGE: AWG#32; AWG#30; AWG#28
  - 2-2. INSULATION O.D.:  $\phi 0.60\text{mm}$  MAX
- 3.USE WITH: AFCI 10159026
- 4.PRODUCT SPEC: GS-12-1546
- 5.PACKING SPEC: GS-14-2681
- 6.RoHS STANDARD SPECIFICATION ACCORDING TO FCI GS-22-008
- 7.ORDERING CODE: 10154208-X X LF

LEAD FREE

Wire Range SEE TABLE A:  
0: AWG#30-32  
1: AWG#28

## FINISH

1: TIN-PLATED OVER NICKEL  
2: GOLD FLASH OVER NICKEL

TABLE A:

10154208-X1LF	1.10	0.90	AWG#28 ( $0.08\text{mm}^2$ )	0.6mm (Max)
10154208-X0LF	0.95	0.80	AWG#30-32 ( $0.05\sim 0.03\text{mm}^2$ )	0.6mm (Max)
P/N	DIM A	DIM B	Wire Range	Insulation $\phi$ O.D.

mat'l. code				surface ISO 1302 ✓	tolerance ISO 406 ISO 1101	projection ISO 1101	product family FITMATE			
ltr	ecn no	dr	date	tolerances unless otherwise specified		mm	title 0.8mm Pitch CRIMP TERMINAL			
A	New Release	Jason	2020-01-08	angles	linear					
B	ELX-N-45365	YS	2022-03-30							
C	ELX-N-53433	YS	2024-11-06			scale 1:1				
		dr	Jason Wang	2019-08-06			dwg no		sheet 1 of 1	size
		engr	Jason Wang	2020-01-08			10154208			A3
		chr	-	-						
		appd	-	-						
sheet index	revision	C					type Product Customer Drawing			
	sheet	1								