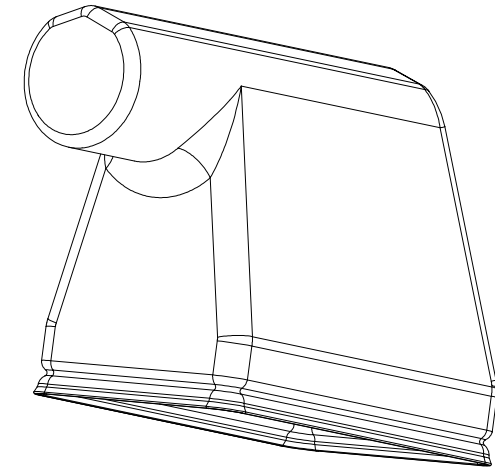
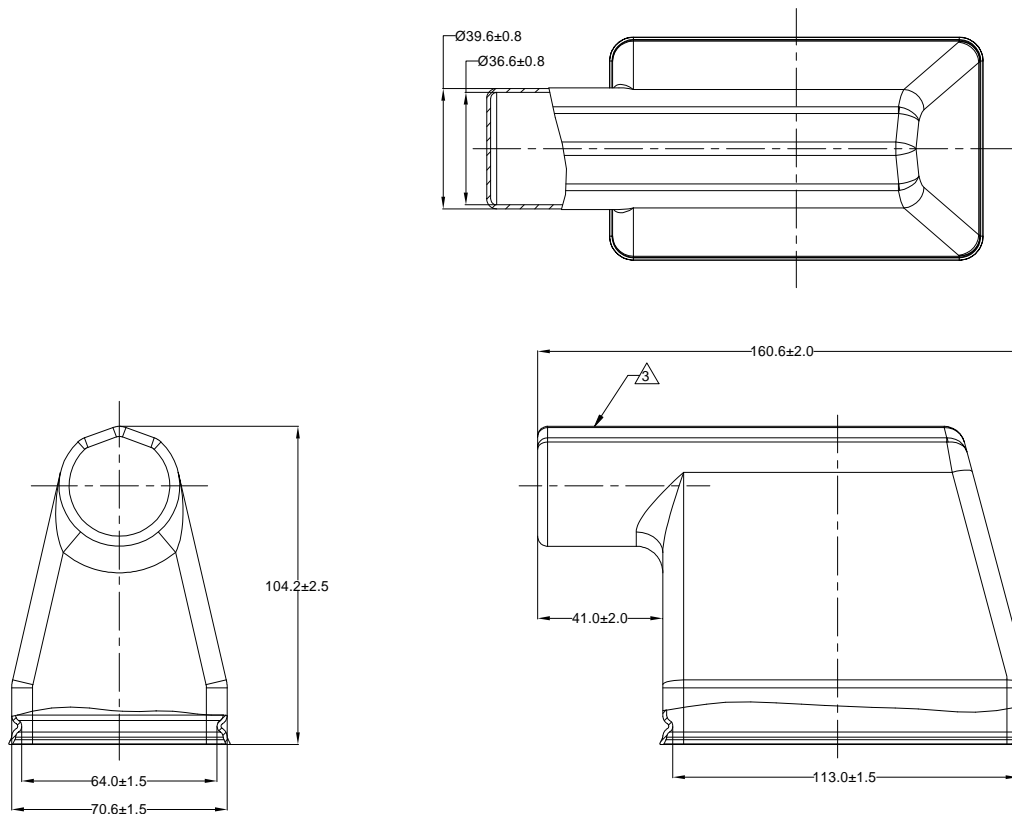


REVISIONS					
REV	ECO	DESCRIPTION	DATE	BY	APPR
A1	-	RELEASE NEW DRAWING	14/MAY/24	HARRIS	TOMMY



# NOTES: UNLESS OTHERWISE SPECIFIED

1. THIS PART IS USED ON ARB12-102P\*R-XXXX & ARB12-128P\*R-XXXX RECEPTACLE AND ARB16-102S\*R-XXXX & ARB16-128S\*R-XXXX PLUG (\*=A,B,C,D KEYS; XXXX= ALL MODIFICATION)

2. TEMPERATURE RATING: -29°C TO +100°C [-20°F TO +212°F]

3. SMALL MATERIAL EXTENSION IS ACCEPTABLE ON THIS END ALL AROUND. ALL THICKNESS ON THIS END MAY VARY.

4. SMALL NON-FILLS ARE ACCEPTABLE INSIDE OF PART.

5. ALL DIMENSIONS ARE FOR REFERENCE USE ONLY.

ARB102-BT-RA		REF: DRB102-BT-0006G	
QUANTITY	PART NUMBER	DESCRIPTION	ITEM
MATERIALS LIST			
UNLESS OTHERWISE SPECIFIED		SIGNATURES	DATE
1) All dimensions are in metric(mm).		DRAWN: HARRIS	14/MAY/24
2) Tolerances are as follows:		CHECKED: ORION	15/MAY/24
1 PL DEC ±0.30		ENGINEER:	
2 PL DEC ±0.15		APPROVAL: TOMMY	16/MAY/24
3 PL DEC ±0.08		CUSTOMER:	
3) Note reference =		THIS DRAWING IS SUPPLIED FOR INFORMATION ONLY. DESIGN FEATURES, SPECIFICATIONS AND PERFORMANCE DATA SHOWN HEREON ARE THE PROPERTY OF THE AMPHENOL CORPORATION. NO RIGHTS OF REPRODUCTION ARE IMPLIED. ALL DIMENSIONS ARE SUBJECT TO NORMAL MANUFACTURING VARIATIONS.	
MATERIAL SPECIFICATIONS:		102&128 POS,BOOT,RIGHT ANGLE,ARB SERIES,BLACK	
WEIGHT:108.8g		SIZE B C- SCALE NONE	
PROCESS SPECIFICATIONS:		DWG NO: ARB102-BT-RA	
NEXT ASSY:		REVISION A1	

TITLE: 102&128 POS BOOT RIGHT ANGLE ARB SERIES BLACK

DWG NO:

ARB102-BT-RA

REV: A1

SH: 1

OF: 1

SHEET 1 OF 1