

ORDERING CODE: **M R U - B F E 1 - 6 1 X X**

**SERIES**

**USB TYPE**

B=24mm SIZE USB 3.0 TYPE A

**CONNECTOR TYPE**

F=RECEPTACLE

**MOUNTING FEATURE**

E=BAYONET LOCK - PANEL MOUNT  
WITH NUT

**CABLE LENGTH**

XX=SEE TABLE 1 & NOTE 5

**COVER OPTIONS**

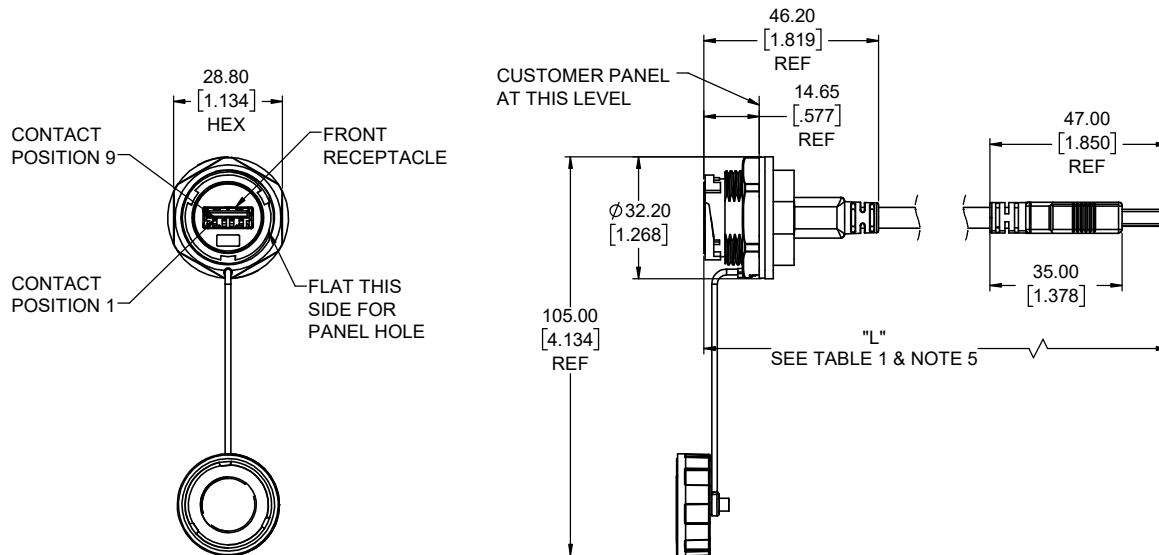
1=WITH DUST COVER

**TERMINATION TYPE**

6=CABLE TO USB 3.0 TYPE A PLUG

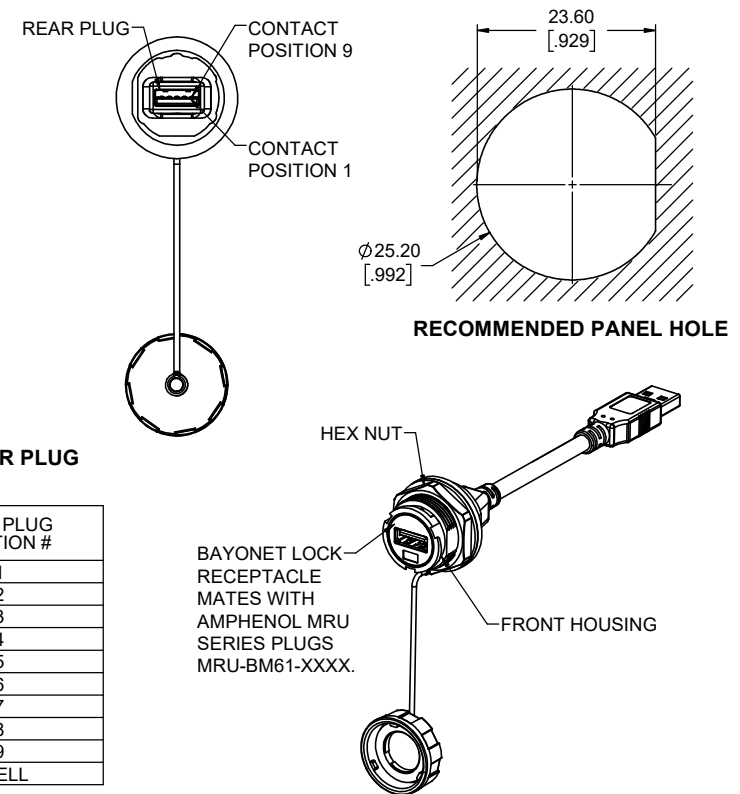
**PLATING**

1=GOLD PLATED ON MATING AREA



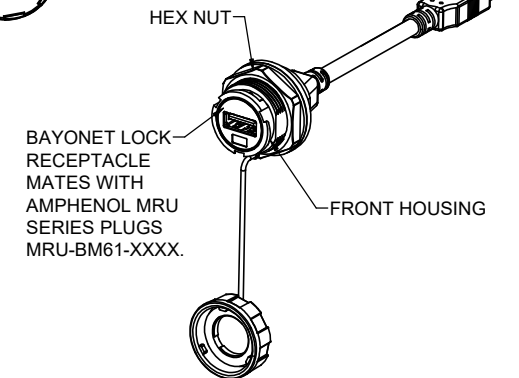
**NOTES:**

- ALL MATERIALS TO BE RoHS COMPLIANT PER EU DIRECTIVE 2011/65/EU AND AMENDMENTS.  
• FRONT HOUSING & HEX NUT & DUST COVER: THERMOPLASTIC PBT, UL FLAMMABILITY RATING 94V-0, BLACK  
• USB HOUSING: THERMOPLASTIC LCP, UL FLAMMABILITY RATING 94V-0, BLUE  
• USB CONTACT: COPPER ALLOY PLATED WITH GOLD OVER NICKEL  
• USB SHIELD: COPPER ALLOY PLATED WITH NICKEL  
• GASKET: SILICONE RUBBER, BLACK  
• OVER-MOLDING: PVC, BLACK  
• CABLE: USB 3.0 CABLE AWM 2725 80 °C 30V
- ELECTRICAL CHARACTERISTICS:  
CURRENT RATING: 0.9A MAX. FOR POSITIONS 1 TO 4, 0.25A MAX. FOR REMAINING POSITIONS  
CONTACT RESISTANCE: 30mΩ MAX. FOR POSITIONS 1 TO 4, 50mΩ MAX. FOR REMAINING POSITIONS
- RECOMMENDED PANEL THICKNESS: 2.0 (.079) TO 3.0 (.118)
- ENVIRONMENTAL PROTECTION: IP67 PER IEC 60529 IN MATED CONDITION
- CABLE LENGTH TOLERANCE: +0.035/-0m FOR LENGTH UP TO 0.3m, +0.05/-0m FOR LENGTH >0.3 TO 1.5m, +0.10/-0m FOR LENGTH >1.5 TO 3m AND +0.15/-0m FOR LENGTH >3 TO 5m.



**FRONT RECEPTACLE TO REAR PLUG  
CONNECTION CHART**

FRONT RECEPTACLE POSITION #	REAR PLUG POSITION #
1	1
2	2
3	3
4	4
5	5
6	6
7	7
8	8
9	9
SHELL	SHELL



**TABLE 1: XX DEFINITION & "LENGTH" DIMENSION**

**FOR LENGTHS LESS THAN 1 METER, PART NUMBER CODE XX IS 20 TO 99 & "LENGTH" DIMENSION IS FROM 20 TO 99cm (200 TO 990mm). SEE NOTE 5 FOR TOLERANCE**

**FOR LENGTHS 1 METER AND LONGER UP TO A MAXIMUM OF 5 METERS**

CODE	LENGTH		CODE	LENGTH ADDITION	
	METERS	MILLIMETERS		METERS	MILLIMETERS
A	1.0	1000	0	0	0
B	2.0	2000	1	0.1	100
C	3.0	3000	2	0.2	200
D	4.0	4000	3	0.3	300
E	5.0	5000	4	0.4	400
-	-	-	5	0.5	500
-	-	-	6	0.6	600
-	-	-	7	0.7	700
-	-	-	8	0.8	800
-	-	-	9	0.9	900

WHEN FIRST DIGIT IS "E", SECOND DIGIT MUST BE "0"

THIS DOCUMENT CONTAINS PROPRIETARY INFORMATION AND SUCH INFORMATION MAY NOT BE DISCLOSED TO OTHERS FOR ANY PURPOSE OR USED FOR MANUFACTURING PURPOSES WITHOUT WRITTEN PERMISSION FROM AMPHENOL CANADA CORP.



UNLESS SPECIFIED OTHERWISE	DRAWN	ED.LIU	DEC15/23
PRIMARY UNITS MILLIMETERS	CHECKED	E.QU	DEC19/23
SECONDARY INCHES	M.E. APP'D		
REFERENCE IN PARENTHESES	O.A. APP'D		
GENERAL TOLERANCES	DWG APPR.	K.LAMBIE	DEC22/23
1 DECIMAL PLACE	ENG. REL. NO.	EAR 15387	
2 DECIMAL PLACES ±0.25	REF.		
3 DECIMAL PLACES	THIRD ANGLE PROJECTION		
ANGULAR DEGREES	DO NOT SCALE DRAWING		

**Amphenol Canada Corp.**  
Commercial Products

**MRU SERIES RUGGED CABLE ASSEMBLY, USB 3.0 TYPE A PANEL MOUNT RECEPTACLE, BAYONET LOCK, RECEPTACLE TO PLUG, IP67 RATING, RoHS COMPLIANT**

DWG. NO.	P-MRU-BFE1-61XX	REV	B
CODE ID NO. 03554	DWG SIZE: X	SCALE: 1:1	SHEET 1 OF 1