

ORDERING CODE: **MRK-JRL8-A13-000**

SERIES

LOCK MECHANISM
J=BAYONET LOCK

CONFIGURATION
R=RECEPTACLE

NUMBER OF CONTACTS
L8=8P8C

SPECIALS
0=STANDARD

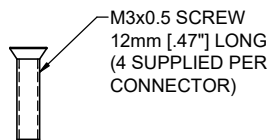
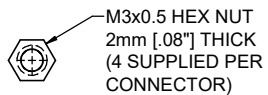
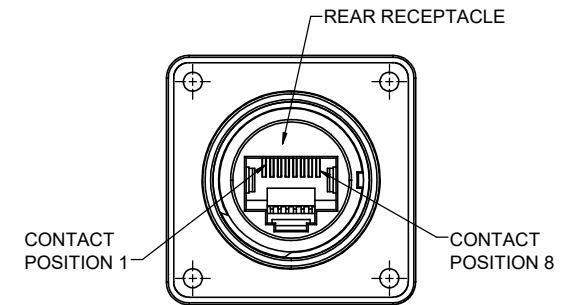
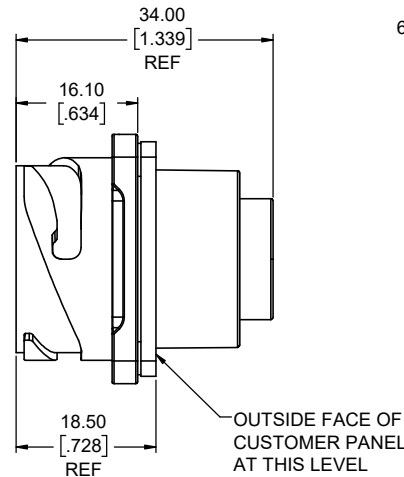
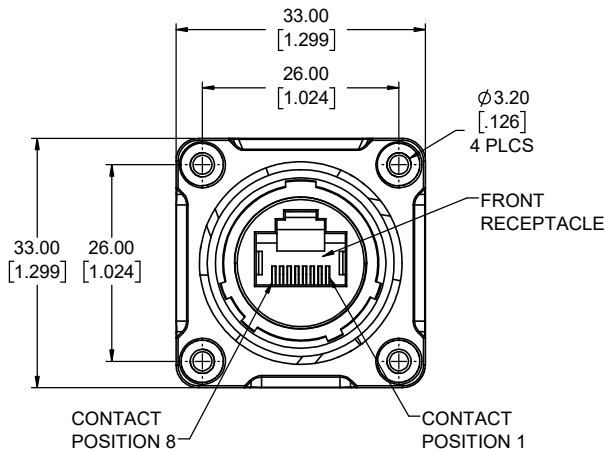
CABLE LENGTH
00=NO CABLE

MOUNTING/COVER OPTIONS
3=ANEL MOUNT WITHOUT DUST COVER

TERMINATION TYPE
A1=RECEPTACLE TO RECEPTACLE ADAPTER

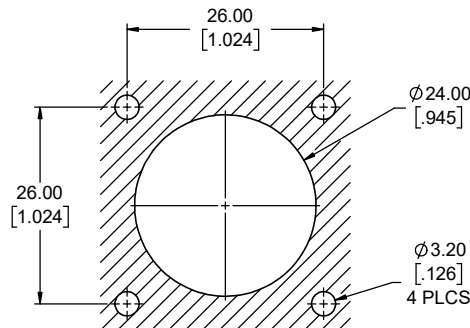
NOTES:

- ALL MATERIALS TO BE RoHS COMPLIANT PER EU DIRECTIVE 2011/65/EU AND AMENDMENTS.
 - FRONT HOUSING: ZINC ALLOY PLATED WITH CHROME
 - INSERT: THERMOPLASTIC PBT, UL FLAMMABILITY RATING 94V-0, BLACK
 - GASKET: SILICONE RUBBER
 - RJ45 CONTACT: COPPER ALLOY PLATED WITH GOLD OVER NICKEL
 - SCREW & HEX NUT: STAINLESS STEEL
- ELECTRICAL CHARACTERISTICS:
 - CURRENT RATING: 1.5A
 - OPERATING VOLTAGE: 125VAC
 - DIELECTRIC WITHSTANDING VOLTAGE: 1000V AC
 - CONTACT RESISTANCE: 30mΩ MAXIMUM
- RECOMMENDED PANEL THICKNESS: 2.5 (.098) TO 4.0 (.157)
- ENVIRONMENTAL PROTECTION: IP67 PER IEC 60529 IN MATED CONDITION
- SCREWS & HEX NUTS PREPARED IN SEPARATE PACKAGE
- METAL BAYONET LOCK RECEPTACLE MATES WITH AMPHENOL MRK SERIES PLUGS MRK-JP00-XXX-XXX.

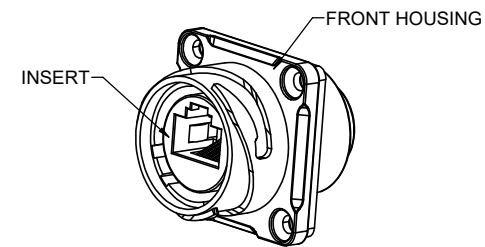


FRONT RECEPTACLE TO REAR RECEPTACLE CONNECTION CHART

FRONT RECEPTACLE POSITION #	REAR RECEPTACLE POSITION #
1	1
2	2
3	3
4	4
5	5
6	6
7	7
8	8
GROUND	GROUND



RECOMMENDED PANEL HOLE



UNLESS SPECIFIED OTHERWISE	DRAWN	ED.LIU	NOV22/23
PRIMARY UNITS MILLIMETERS	CHECKED	E.QU	NOV30/23
SECONDARY UNITS INCHES	M.E. APP'D		
REFERENCE IN PARENTHESES	Q.A. APP'D		
GENERAL TOLERANCES	DWG APPR.	K.LABMIE	DEC23/23
1 DECIMAL PLACE	ENG. REL. NO.	EAR 15387	
2 DECIMAL PLACES ±0.25	REF.		
3 DECIMAL PLACES	THIRD ANGLE PROJECTION		
ANGULAR DEGREES	DO NOT SCALE DRAWING		

Amphenol Canada Corp. Commercial Products			
MRK SERIES ROUND MODULAR JACK, RECEPTACLE WITH BAYONET LOCK, PANEL MOUNT RECEPTACLE TO RECEPTACLE ADAPTER, IP67 RATING, RoHS COMPLIANT			
P-MRK-JRL8-A13-000			REV A
CODE ID NO. 03554	DWG SIZE: X	SCALE: 1:1	SHEET 1 OF 1