

ORDERING CODE: **MRU-BMD1-6050**

**SERIES**  
USB TYPE  
B=24mm SIZE USB 3.0 TYPE A

**CONNECTOR TYPE**  
M=PLUG

**MOUNTING FEATURE**  
D=METAL LATCH LOCK - WITH ASSEMBLED CABLE

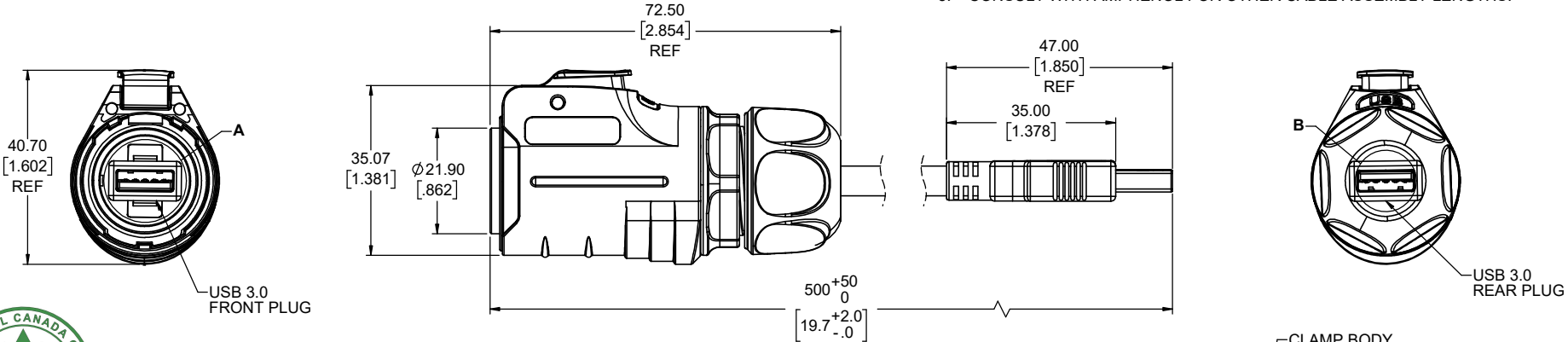
**CABLE LENGTH**  
50= 50 CENTIMETERS

**COVER OPTIONS**  
0=NO DUST COVER

**TERMINATION TYPE**  
6=CABLE TO USB 3.0 TYPE A PLUG

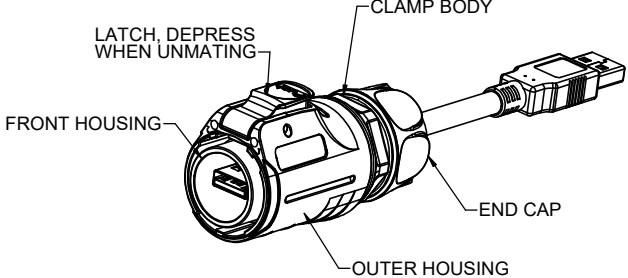
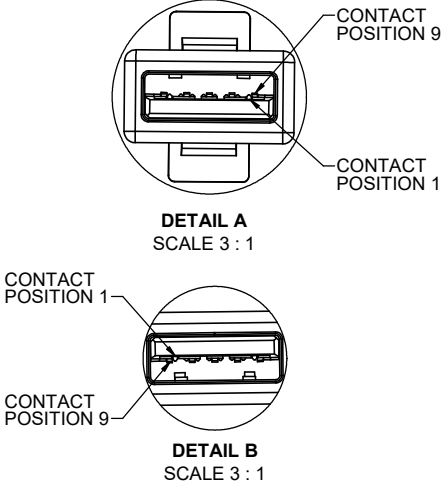
**PLATING**  
1=GOLD PLATED ON MATING AREA

- NOTES:**
- ALL MATERIALS TO BE RoHS COMPLIANT PER EU DIRECTIVE 2011/65/EU AND AMENDMENTS.
    - LATCH: ZINC ALLOY PLATED WITH CHROME
    - SPRING: STAINLESS STEEL
    - LOCK PIN: STAINLESS STEEL
    - FRONT HOUSING: ZINC ALLOY PLATED WITH CHROME
    - OUTER HOUSING & CLAMP BODY & END NUT: THERMOPLASTIC PBT, UL FLAMMABILITY RATING 94V-0, BLACK
    - USB CONTACT: COPPER ALLOY PLATED WITH GOLD OVER NICKEL
    - USB SHIELD: COPPER ALLOY PLATED WITH NICKEL
    - USB HOUSING: THERMOPLASTIC LCP, UL FLAMMABILITY RATING 94V-0,BLUE
    - GASKET & GROMMET & O-RING: SILICONE RUBBER
    - OVER-MOLDING: PVC, BLACK
    - CABLE: USB 3.0 CABLE AWM 2725 80 °C 30V
  - ELECTRICAL CHARACTERISTICS:
    - CURRENT RATING: 0.9A MAX. FOR POSITIONS 1 TO 4, 0.25A MAX. FOR REMAINING POSITIONS
    - CONTACT RESISTANCE: 30mΩ MAX. FOR POSITIONS 1 TO 4, 50mΩ MAX. FOR REMAINING POSITIONS
  - ENVIRONMENTAL PROTECTION: IP67 PER IEC 60529 IN MATED CONDITION
  - LATCH LOCK FRONT PLUG MATES WITH AMPHENOL MRU SERIES RECEPTACLES MRU-BF81-XXXX
  - CONSULT WITH AMPHENOL FOR OTHER CABLE ASSEMBLY LENGTHS.



**FRONT PLUG TO REAR PLUG CONNECTION CHART**

FRONT PLUG POSITION #	REAR PLUG POSITION #
1	1
2	2
3	3
4	4
5	8
6	9
7	7
8	5
9	6
SHELL	SHELL



UNLESS SPECIFIED OTHERWISE		DRAWN	ED.LIU	NOV22/23	<b>Amphenol Canada Corp.</b> Commercial Products MRU SERIES RUGGED CABLE ASSEMBLY, USB 3.0 TYPE A PLUG, LATCH LOCK, CABLE LENGTH 50 CENTIMETERS, IP67 RATING, RoHS COMPLIANT	
PRIMARY UNITS MILLIMETERS		CHECKED	E.QU	NOV30/23		
SECONDARY UNITS INCHES		M.E. APP'D				
REFERENCE IN PARENTHESSES		Q.A. APP'D			DWG. NO. <b>P-MRU-BMD1-6050</b>	
GENERAL TOLERANCES		DWG APPR. K.LAMBIE	DEC22/23			
1 DECIMAL PLACE		ENG. REL. NO. EAR 15387			DO NOT SCALE DRAWING	
2 DECIMAL PLACES ±0.25		REF.				
3 DECIMAL PLACES					CODE ID NO. 03554 DWG SIZE: X SCALE: 1:1 SHEET 1 OF 1	
ANGULAR DEGREES		THIRD ANGLE PROJECTION				