

Feb.1.2025 Copyright 2025 HIROSE ELECTRIC CO., LTD. All Rights Reserved.
In case of consideration for using Automotive equipment / device which demand high reliability, kindly contact our sales window correspondents.

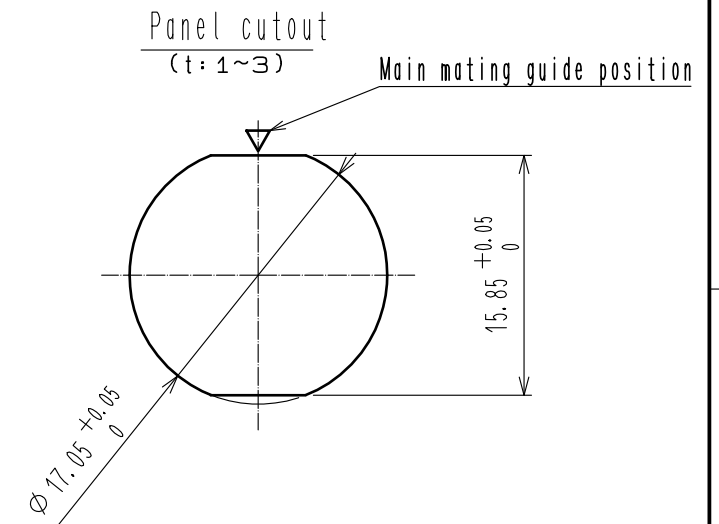
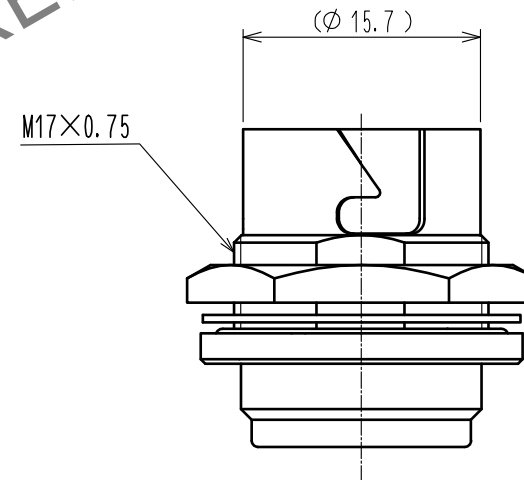
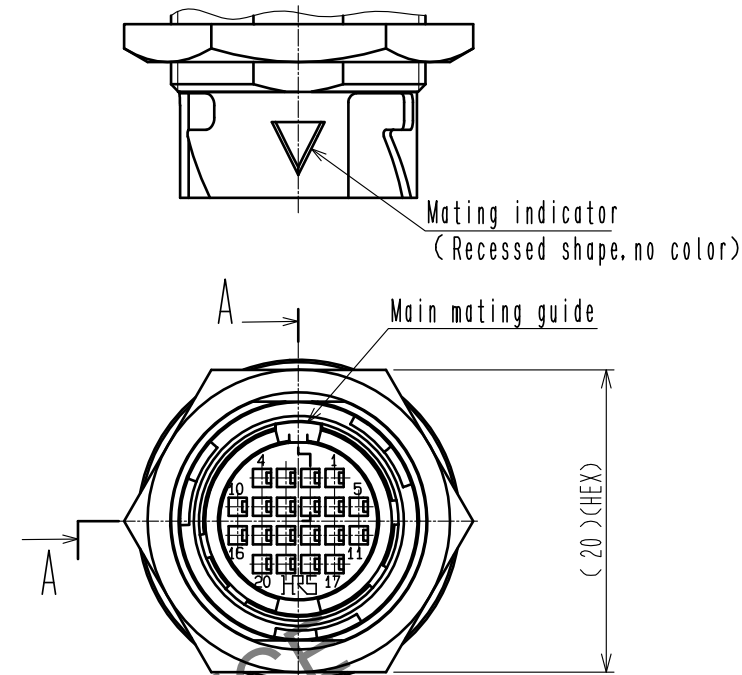
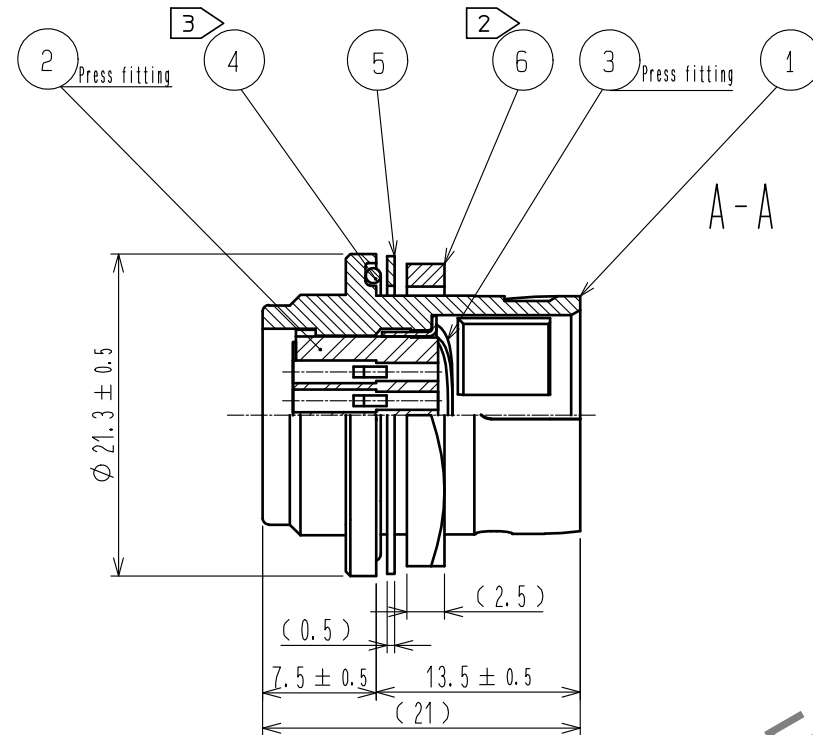
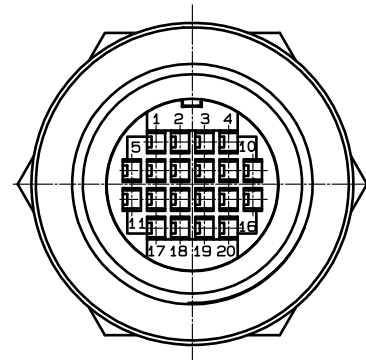


Table 1		
Applicable crimp contact		Strip contact HR22-PC1-221 (CL122-0094-0)
Applicable cable	Size	AWG #24~28
	Jacket diameter	Ø1.15 MAX
Applicable crimping tool		Automatic crimping machine: CM-105 (CL901-0005-4) Applicator : AP105-HR22-2 (CL901-2023-7)
Contact extraction tool		RP6-SC-TP (CL150-0039-0)

- Notes
- Table 1 shows applicable crimp contact and applicable tool.
 - The recommended clamp torque of Ref.No. ⑥ : 2~3 N·m. Use Loctite 242 to prevent screws from loosening.
 - When this connector is mounted on to panel, be careful ref.No. ④ is assembled surely into the groove of ref.No. ① as shown in this figure to keep waterproof effectiveness.
 - Please Operate this product in accordance with ATAD-C0494-00 'HR22K Connector Operation Manual'.

3	Phosphor bronze	Nickel plating	6	Brass	Nickel plating
2	PBT	(Black)	5	Brass	Nickel plating
1	Zinc alloy	Nickel plating	4	Hydrogenated Nitrile Butadiene Rubber	(Black)
NO.	MATERIAL	FINISH . REMARKS	NO.	MATERIAL	FINISH . REMARKS
UNITS mm		SCALE 2 : 1	COUNT		DESCRIPTION OF REVISIONS
DESIGNED		CHECKED		DATE	
APPROVED : TP. KOMATSU		20240618		DRAWING NO. EDC-396047-00-01	
CHECKED : HY. KOBAYASHI		20240617		PART NO. HR22K-12WBR-20PC	
DESIGNED : HY. KISHI		20240614		CODE NO. CL0122-1002-0-00	
DRAWN : HY. KISHI		20240614		1/1	