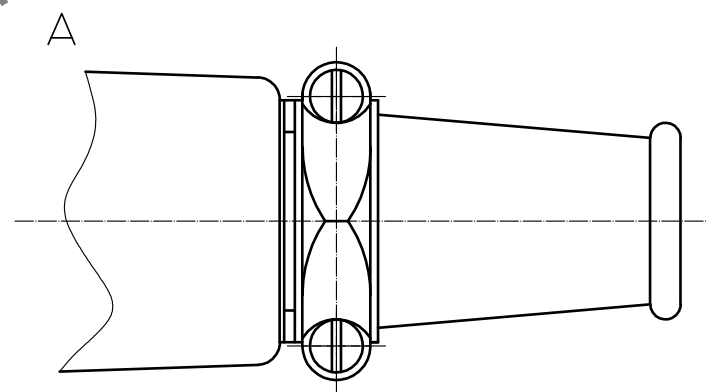
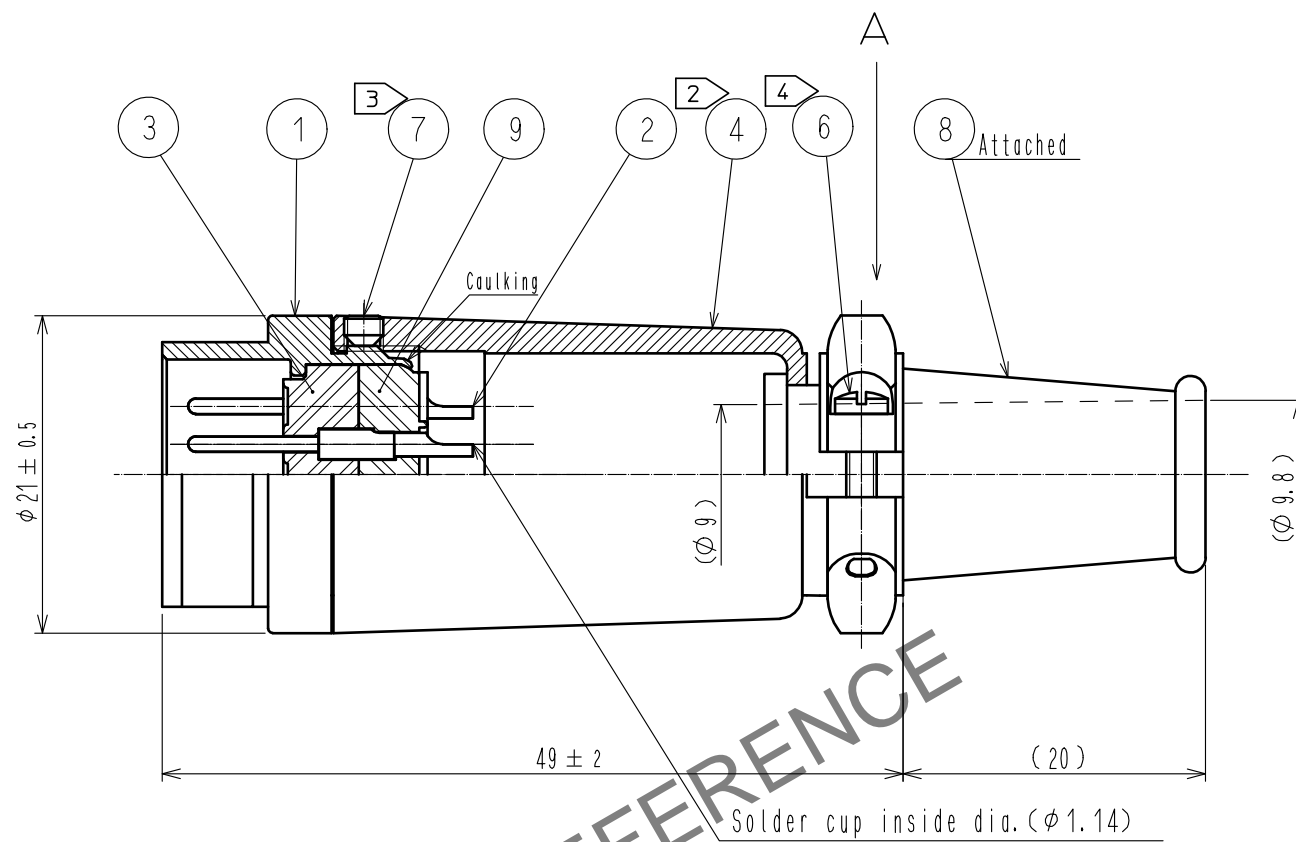
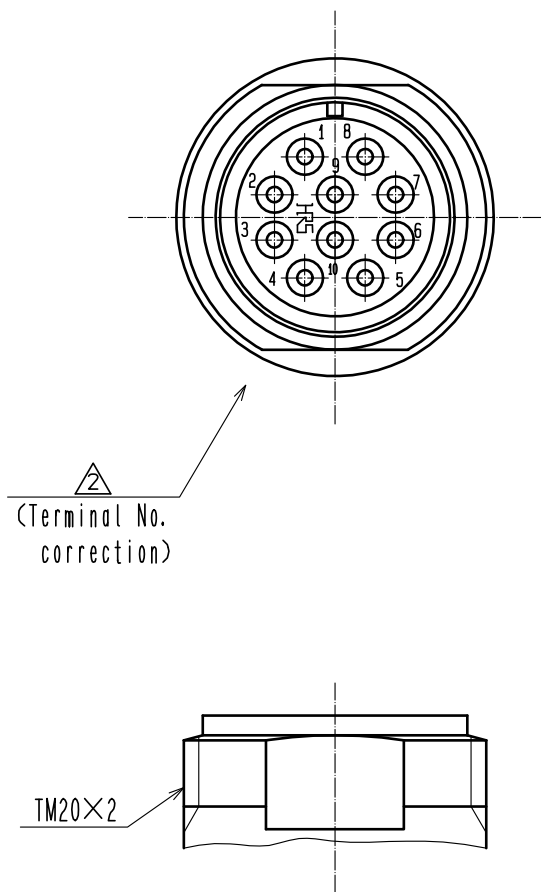


Mar.1.2025 Copyright 2025 HIROSE ELECTRIC CO., LTD. All Rights Reserved.
In case of consideration for using Automotive equipment / device which demand high reliability, kindly contact our sales window correspondents.



- Notes
- Rotation example of Ref. No. ① and ④ are shown.
 - The tightening torque of Ref. No. ④: 2 to 3 N·m.
 - The tightening torque of Ref. No. ⑦: 0.2 to 0.3 N·m.
Across flats hexagon head of Ref. No. ⑦: 1.27
Apply Loctite 243 HENKEL JAPAN or equivalent to the threaded portion of Ref. No. ⑦ in order to prevent loosening.
 - The tightening torque of Ref. No. ⑥: 0.12 to 0.15 N·m.
Apply Loctite 243 HENKEL JAPAN or equivalent to the threaded portion of Ref. No. ⑥ in order to prevent loosening.
 - The cable pull and twisting strength and other characteristics may differ, depending on the cable structure, please confirm before the use.

4	Aluminum alloy	Matte finish alumite (chrome)	9	Polyphenylene sulfide	(Black)
3	Polyphenylene sulfide	(Black)	8	Chloroprene rubber	(Black)
2	Brass	Silver plating 4μm min.	7	Steel	Nickel plating
1	Zinc alloy	Chrome plating	6	Brass	Nickel plating
NO.	MATERIAL	FINISH . REMARKS	NO.	MATERIAL	FINISH . REMARKS
UNITS mm		SCALE 2 : 1	COUNT 1	DESCRIPTION OF REVISIONS DIS-C-00015731	DESIGNED HT. ZENBA
HIROSE ELECTRIC CO., LTD.		APPROVED : TP. KOMATSU	20230508	DRAWING NO. EDC-007699-81-00	DATE 20230718
		CHECKED : HY. KOBAYASHI	20230508	PART NO. RM15TJD-10P(81)	
		DESIGNED : HT. ZENBA	20230508	CODE NO. CL0109-0706-4-81	
		DRAWN : KR. SUZUKI	20230508		