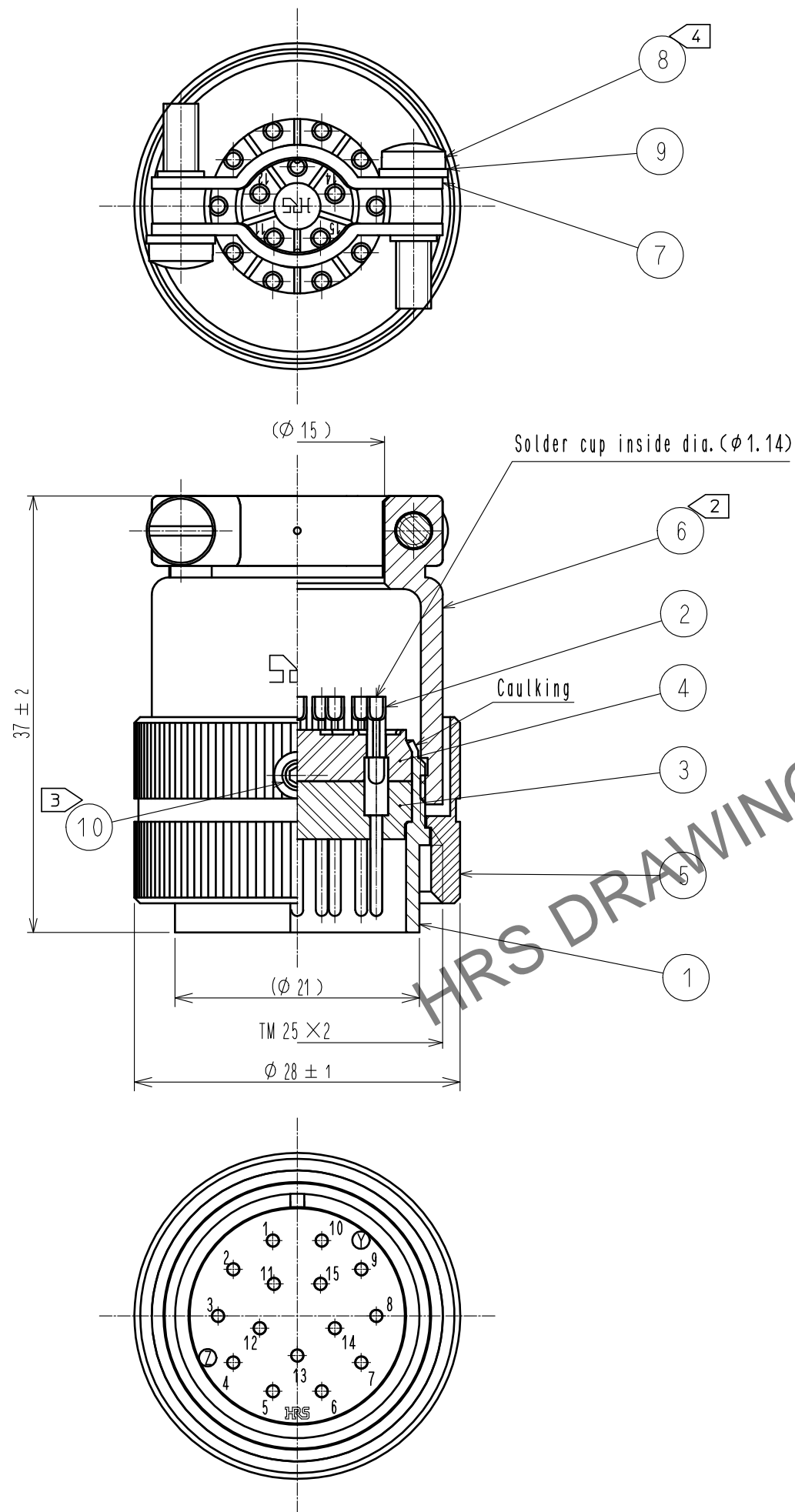


Feb.1.2025 Copyright 2025 HIROSE ELECTRIC CO., LTD. All Rights Reserved.
In case of consideration for using Automotive equipment / device which demand high reliability, kindly contact our sales window correspondents.



- Notes
- 1 Rotation example of Ref. No. ① and ⑥ are shown.
 - ② The tightening torque of Ref. No. ⑥: 2 to 3 N·m.
 - ③ The tightening torque of Ref. No. ⑩: 0.2 to 0.3 N·m.
Across flats hexagon head of Ref. No. ⑩: 1.27
Apply Loctite 243 HENKEL JAPAN or equivalent to the threaded portion of Ref. No. ⑩
in order to prevent loosening.
 - ④ The tightening torque of Ref. No. ⑧: 0.6 to 0.7 N·m.
Apply Loctite 243 HENKEL JAPAN or equivalent to the threaded portion of Ref. No. ⑧
in order to prevent loosening.
 - 5 The cable pull and twisting strength and other characteristics may differ,
depending on the cable structure, please confirm before the use.

5	Brass	Nickel plating	10	Steel	Nickel plating	Hexagon socket set screws M2.6×0.45×2
4	Polyphenylene sulfide	(Black)	9	Phosphor bronze	Nickel plating	Spring lock washers No. 2 3mm
3	Polyphenylene sulfide	(Black)	8	Brass	Nickel plating	Slotted head screw M3×0.5×12
2	Brass	Silver plating 4 μm min.	7	Brass	Nickel plating	
1	Brass	Nickel plating	6	Brass	Nickel plating	
NO.	MATERIAL	FINISH . REMARKS	NO.	MATERIAL	FINISH . REMARKS	
UNITS mm		SCALE 2 : 1	COUNT △	DESCRIPTION OF REVISIONS		DESIGNED
HRS		APPROVED : TP. KOMATSU	20230616	DRAWING NO.		EDC-003736-81-00
HIROSE ELECTRIC CO., LTD.		CHECKED : HY. KOBAYASHI	20230616	PART NO.		RM21TP-15P(81)
		DESIGNED : HT. ZENBA	20230616	CODE NO.		CL0109-0323-5-81
		DRAWN : KR. SUZUKI	20230614			△ 1/1