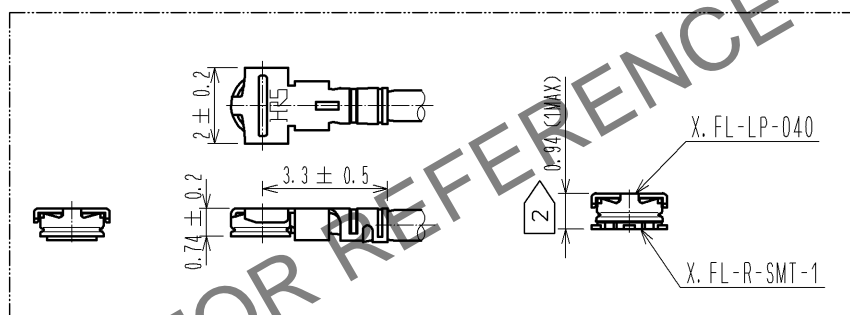


- NOTE 1 Do not apply any excessive stress to the cable assembly position.
2 The drawing shows mated connector height only.

[DIMENSIONS OF CONNECTOR]



RoHS COMPLIANT

[PRECAUTIONS FOR HANDLING]

- Connector insertion and extraction
a. Insert the connector as perpendicularly to the mating surface as possible with aligning the mating axes of both connectors by specialised insertion JIG.
Part No. : X.FL-LP-IN.OUT-1

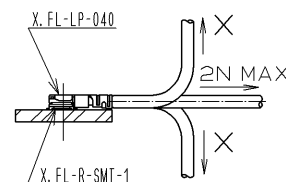
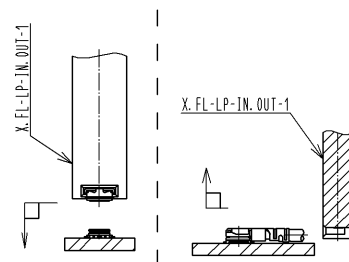
Do not excessively slant the connectors when inserting.

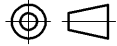


- b. Connector shall be extracted by specialised extraction JIG.
Part No. : X.FL-LP-IN.OUT-1

Never hold the cable when extracting the cable because it damages the connector.

- Allowable loads on the cable after the connectors are mated.
The right figures show the maximum allowable loads on the cable.

Do not apply loads exceeding these values to the cable.



2	X. FL-LP-040	CL331-0700-0-00							
1	HRM-200-040JBN(40)	CL323-0792-9-40		3	RF-MF5010	NISSEI ELECTRIC CO., LTD.			
NO.	PART NO.	CODE NO.		NO.	PART NO.	CODE NO.			
UNITS mm		SCALE FREE		COUNT	DESCRIPTION OF REVISIONS		DESIGNED	CHECKED	DATE
 HIROSE ELECTRIC CO., LTD.		APPROVED : MH. YAMANE		10. 03. 31	DRAWING NO.		EDC4-330816-01		
		CHECKED : NK. NINOMIYA		10. 03. 31	PART NO.		HRMJ-X. FL-04N1-A-80RS		
		DESIGNED : MY. KOJIMA		10. 03. 31	CODE NO.		CL321-5045-1-01		
		DRAWN : MY. KOJIMA		10. 03. 31	