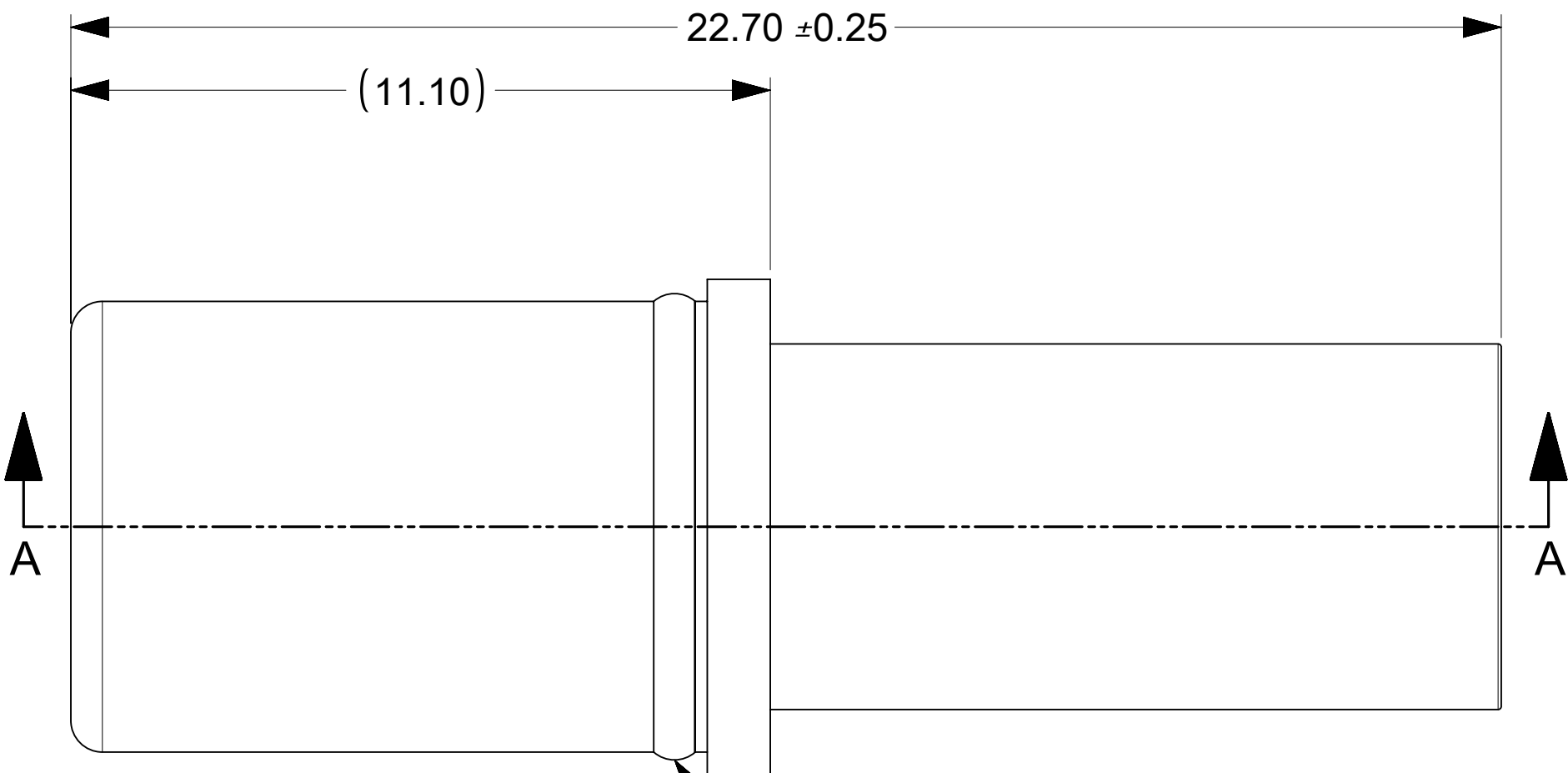
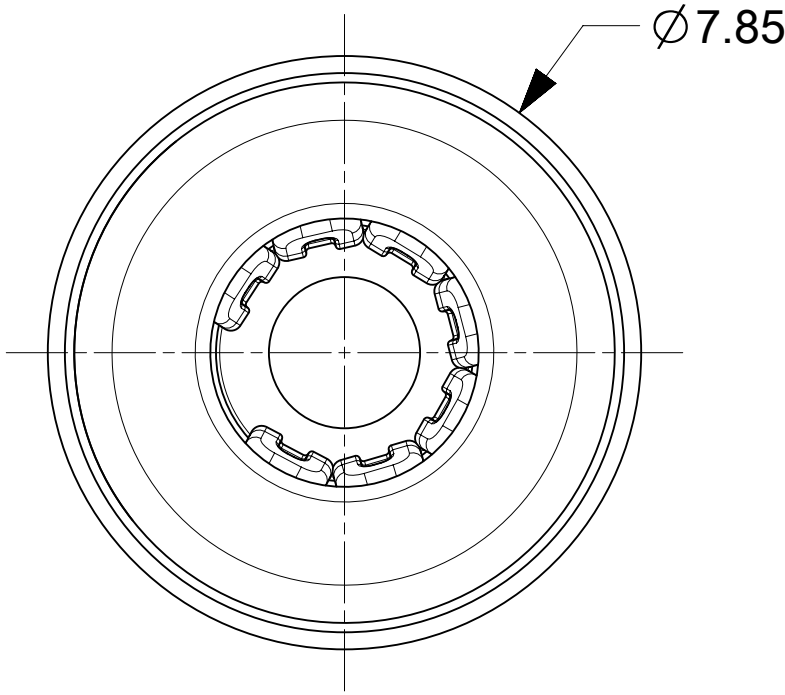
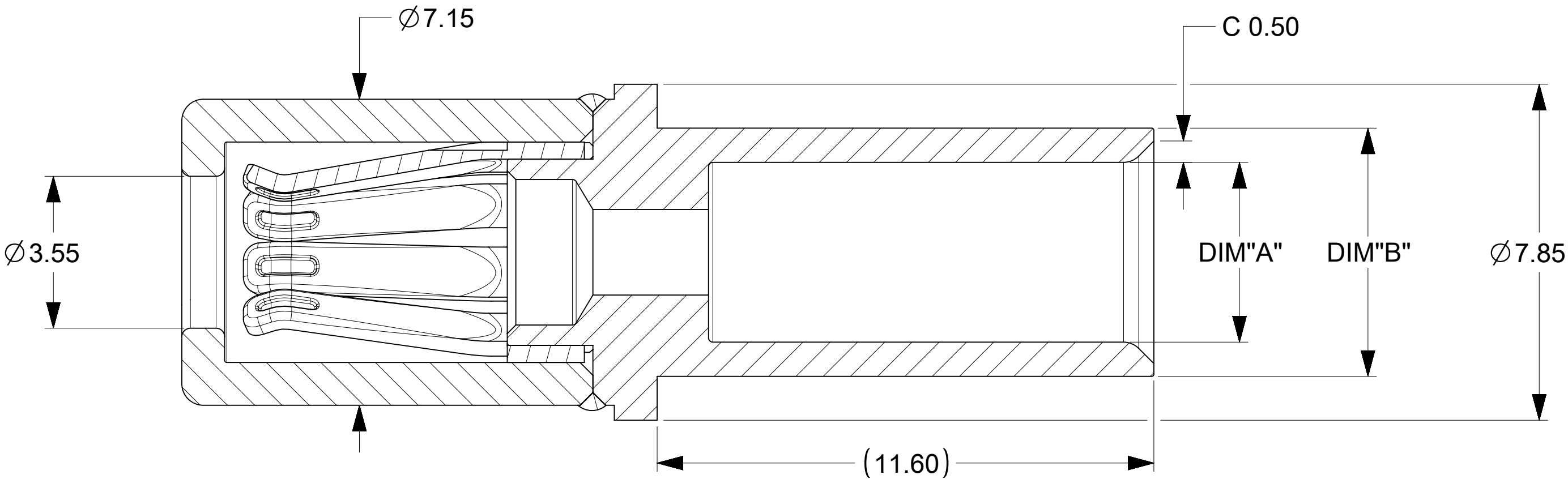
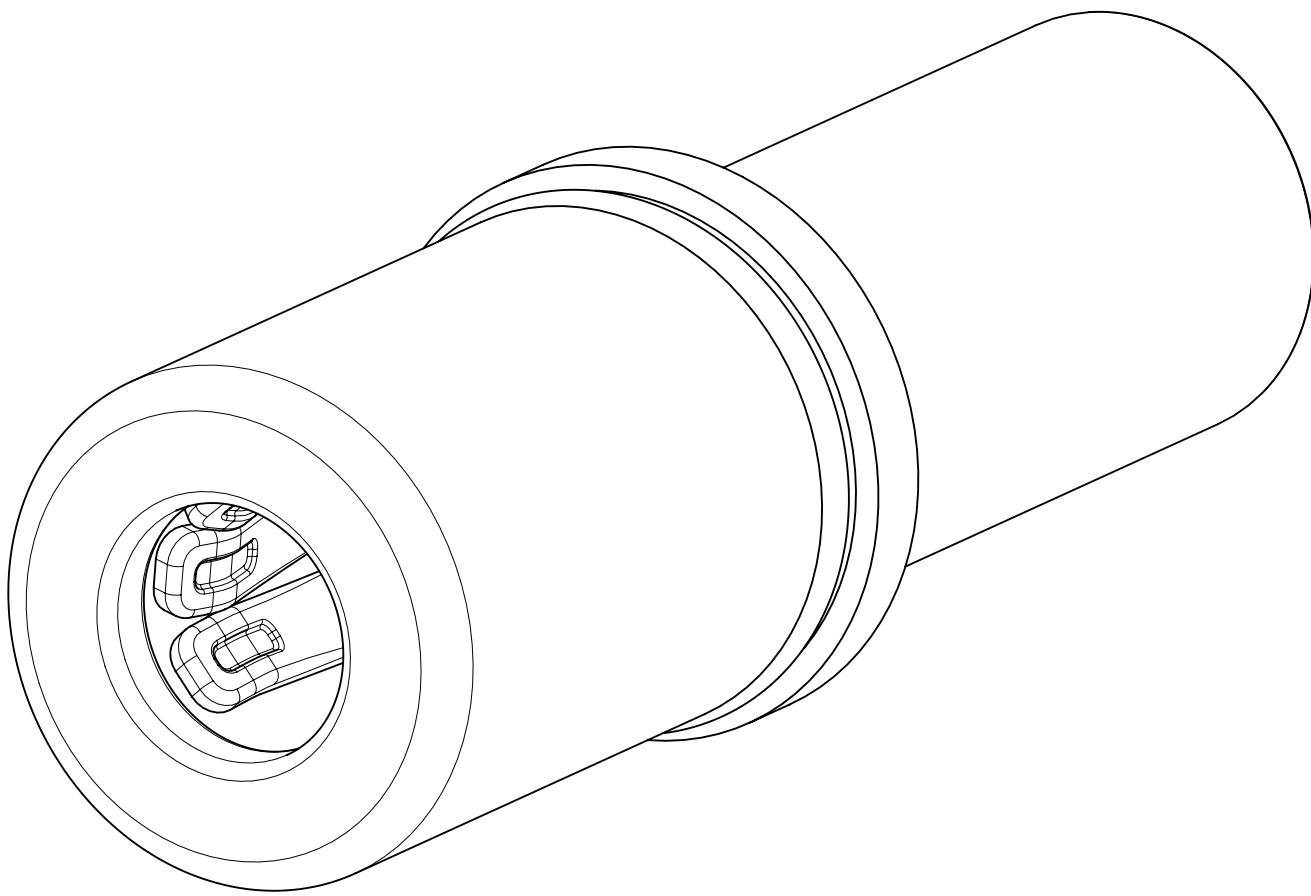


PART NUMBER	DIM "A"	DIM"B"	NOTE
2216163001	Ø4.20	Ø5.80	FOR 8 AWG
2216163002	Ø3.40	Ø5.40	FOR 10 AWG




LASER WELDING PROFILE
(JUST FOR ILLUSTRATION)



SECTION A-A

NOTES:

- MATERIALS:
BASE METAL: HIGH CONDUCTIVE COPPER ALLOY
PLATING ON CONTACTS: 0.75 MICRON MIN GOLD OVER 1.27 MICRON MIN NICKEL
PLATING ON BODY: 3.18 MICRON MIN SILVER OVER 1.27 MICRON MIN NICKEL
THE TERMINAL ARE FINISHED WITH ANTI-TARNISH TREATMENT BUT MAY TARNISH OVER TIME
- THIS TERMINAL IS DESIGNED TO BE USED WITH RECEPTACLE HOUSING SERIES 221597-XXXX AND SOLD SEPARATELY.
- PRODUCT SPECIFICATION: 2215970001-PS
- APPLICATION SPECIFICATION: 2215971000-AS
- PACKAGING SPECIFICATION 2046083011-PK.
- TEST SUMMARY: 2215973000-TS.
- PARTS MUST CONFORM TO CLASS B REQUIREMENT OF COSMETIC SPEC PS-45499-002

THIS DRAWING CONTAINS INFORMATION THAT IS PROPRIETARY TO MOLEX ELECTRONIC TECHNOLOGIES, LLC AND SHOULD NOT BE USED WITHOUT WRITTEN PERMISSION											
DIMENSION UNITS		SCALE		CURRENT REV DESC: INITIAL RELEASE.			<div>molex</div>				
mm		10:1									
GENERAL TOLERANCES (UNLESS SPECIFIED)											
ANGULAR TOL		± 1.0 °		EC NO: 806858 DRWN: SHIVAM10 2025/01/21 CHK'D: MBELLE 2025/01/22 APPR: HTHYAGARAJ 2025/01/23 INITIAL REVISION: DRWN: SHIVAM10 2024/06/23 APPR: HTHYAGARAJ 2024/07/29			3.4 MM SHORT CRIMP SOCKETS POWERWIZE PRODUCT FAMILY.				
4 PLACES		±					PRODUCT CUSTOMER DRAWING				
3 PLACES		±									
2 PLACES		± 0.1									
1 PLACE		± 0.15									
0 PLACES		±					DOCUMENT NUMBER		DOC TYPE	DOC PART	REVISION
DRAFT WHERE APPLICABLE MUST REMAIN WITHIN DIMENSIONS		THIRD ANGLE PROJECTION 		DRAWING D-SIZE	SERIES 221616	2216163001		PSD	000	A1	
						MATERIAL NUMBER		CUSTOMER		SHEET NUMBER	
						SEE TABLE		GENERAL MARKET		1 OF 1	

DOCUMENT STATUS	P1	RELEASE DATE	2025/01/23	10:38:21
-----------------	----	--------------	------------	----------