

DO NOT SCALE FROM THIS PRINT

DESIGNED & DIMENSIONED IN MILLIMETERS [INCHES]

BNC7T-J-P-XX-ST-TH1

GENDER
-J: JACK
TYPE
-P: PCB

TERMINATION
-TH1: THROUGH HOLE
ORIENTATION
-ST: STRAIGHT

PLATING SPECIFICATION
 [B] -HN: HEAVY GOLD/NICKEL (SEE NOTES 7 & 8)
 (BNC7T-J-P-N-ST-TH1-BDY)
 (BNC7T-J-P-ST-TH1-INS)
 (BNC7T-J-P-H-ST-TH1-SKT)
 -MN: MEDIUM GOLD/NICKEL (SEE NOTES 7 & 8)
 (BNC7T-J-P-N-ST-TH1-BDY)
 (BNC7T-J-P-ST-TH1-INS)
 (BNC7T-J-P-M-ST-TH1-SKT)

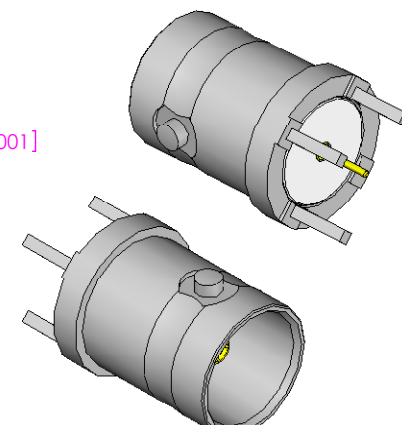
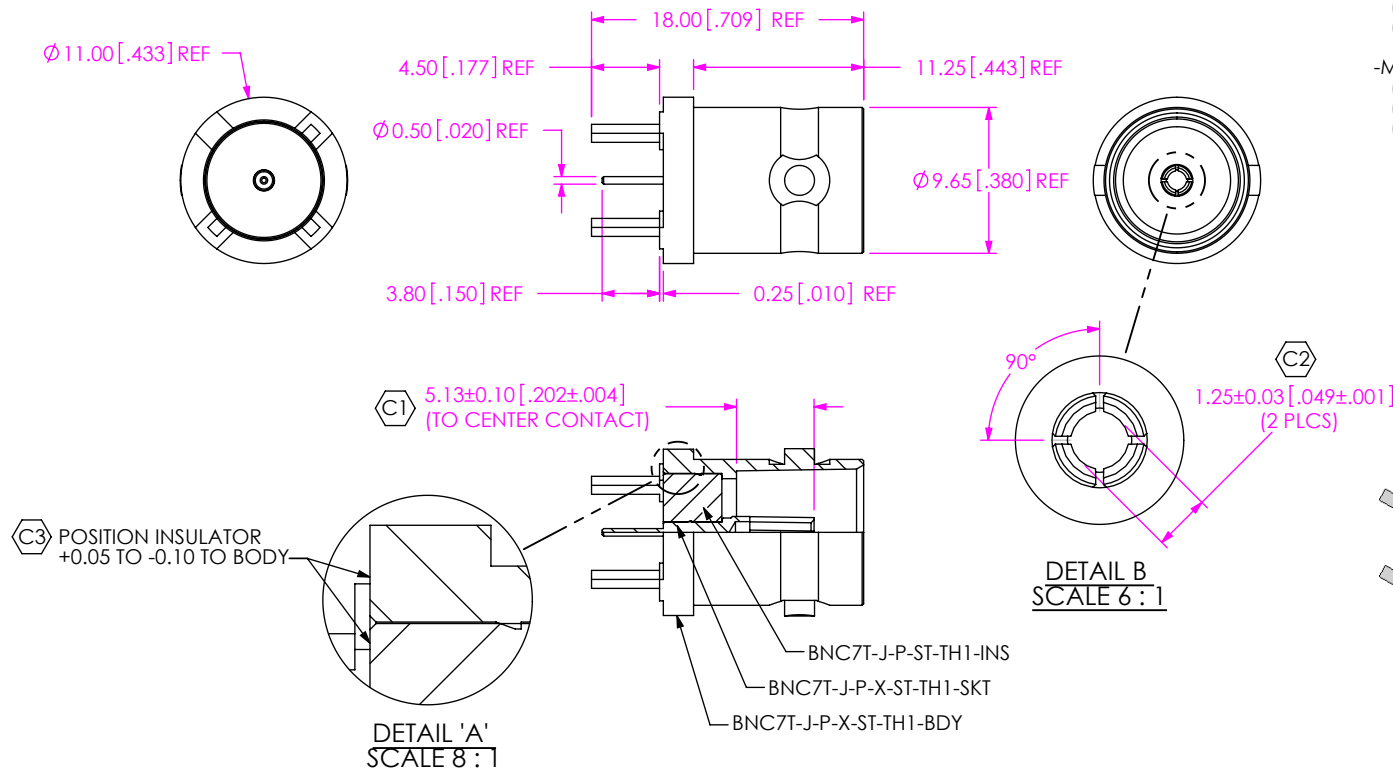
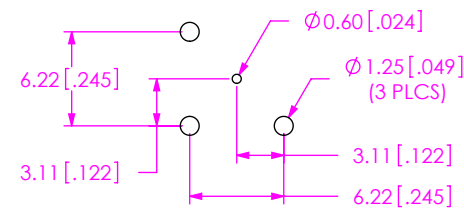


FIG.1
BNC7T-J-P-HN-ST-TH1 SHOWN

RECOMMENDED PCB HOLE LAYOUT



NOTES:

1. (C) REPRESENTS A CRITICAL DIMENSION.
2. PUSHOUT FORCE FOR CENTER CONTACT: 26.69 N [6.0 LB] MIN.
3. COMPONENTS TO BE SHIPPED UNASSEMBLED.
4. SAMPLE ORDERS: TO BE PACKAGED IN INDIVIDUAL KIT FORM, PRODUCTION ORDERS: EACH COMPONENT TO BE BULK PACKAGED.
5. RoHS COMPLIANT.
6. ALL PLATING MUST PASS SOLDERABILITY TEST PER MIL-STD-202G, METHOD 208H USING TYPE "R" FLUX.
7. COMPONENT PLATING DESIGNATIONS:
 -H: 0.000030" MIN. GOLD OVER 0.000050" MIN. NICKEL.
 [B] -M 0.000010" MIN. GOLD OVER 0.000050" MIN. NICKEL.
 -N: 0.000100" MIN. NICKEL.
8. ASSEMBLY PLATING DESIGNATIONS:
 -HN: (CENTER CONTACT)-H
 (OUTER CONTACT) -N
 (REMAINING METAL PARTS) -N
 [B] -MN: (CENTER CONTACT)-M
 (OUTER CONTACT) -N
 (REMAINING METAL PARTS) -N

Pb THIS PRODUCT MANUFACTURED WITH LEAD-FREE PROCESSING

F:\DWG\MISC\Mktg\BNC7T-J-P-XX-ST-TH1-MKT.SLDDRW

UNLESS OTHERWISE SPECIFIED DIMENSIONS ARE IN MILLIMETERS [INCHES]		PROPRIETARY NOTE	
TOLERANCES ARE:		THIS DOCUMENT CONTAINS INFORMATION CONFIDENTIAL AND PROPRIETARY TO SAMTEC, INC. AND SHALL NOT BE REPRODUCED OR TRANSFERRED TO OTHER DOCUMENTS OR DISCLOSED TO OTHERS OR USED FOR ANY PURPOSE OTHER THAN THAT WHICH IT WAS OBTAINED WITHOUT THE EXPRESSED WRITTEN CONSENT OF SAMTEC, INC.	
DECIMALS	ANGLES	DESCRIPTION:	
.X: ±0.3 [01]	2°	TRUE 75 OHM BNC STRAIGHT JACK FOR PCB	
.XX: ±0.13 [005]		DWG. NO.	
.XXX: ±0.051 [0020]		BNC7T-J-P-XX-ST-TH1	
MATERIAL: DO NOT SCALE DRAWING SHEET SCALE: 2:1		BY: G. HERMAN 04/21/2008 SHEET 1 OF 1	
BODY: BRASS			
CONTACT: COPPER ALLOY			
DIELECTRIC: PTFE			



520 PARK EAST BLVD, NEW ALBANY, IN 47150
 PHONE: 812-944-6733 FAX: 812-948-5047
 e-Mail: info@SAMTEC.com code: 55322