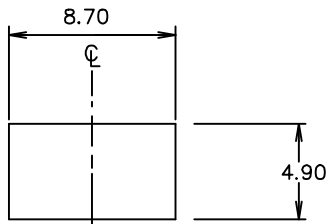
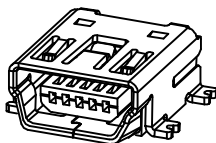


**REVISION N**

DO NOT SCALE FROM THIS PRINT



SUGGESTED PANEL CUTOUT DIMENSIONS



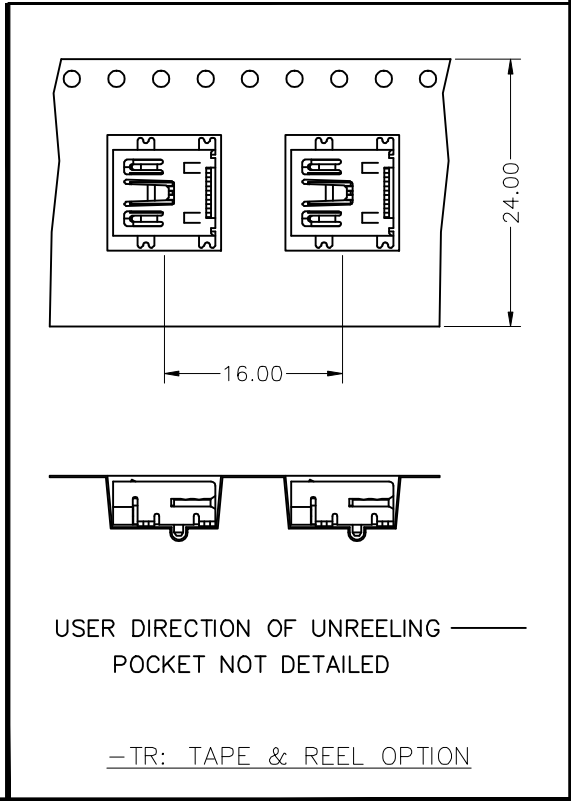
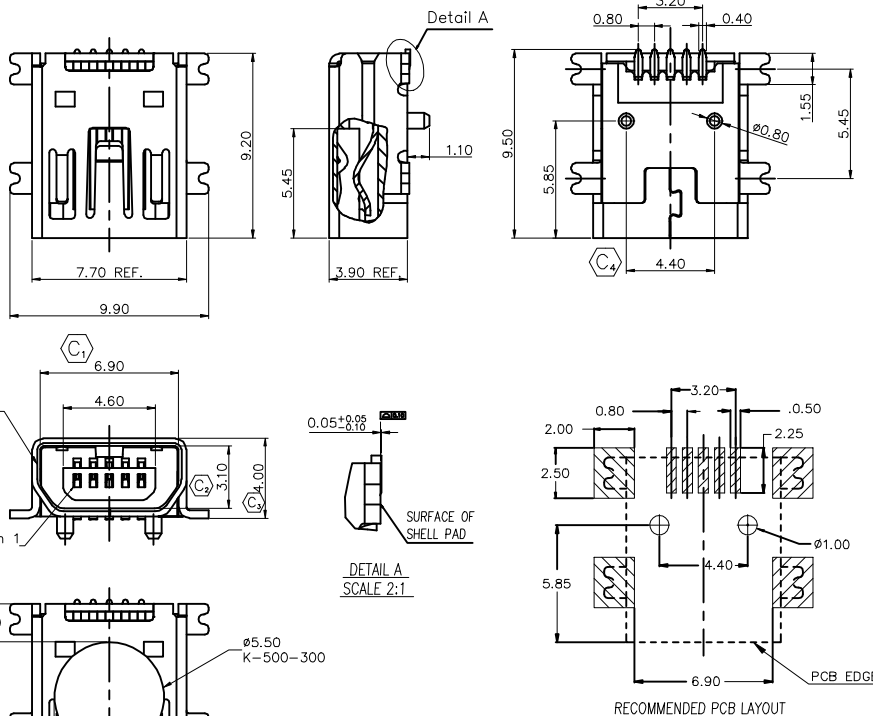
MUSB-05-X-AB-SM-A-X-XX

NO. OF CONTACTS — 05  
 PLATING — F: FLASH GOLD ON MATING AREA, BRIGHT ACID TIN ON TAILS WITH NICKEL UNDERPLATE  
 — S: .000030" GOLD ON MATING AREA, BRIGHT ACID TIN ON TAILS WITH NICKEL UNDERPLATE

TYPE — AB

OPTION — TR: TAPE & REEL PACKAGING (LEAVE BLANK FOR TRAY PACKAGING)  
 — K: KAPTON PAD  
 E & I OPTION — R: RoHS COMPLIANT

ALIGNMENT PINS  
 RA TERMINATION — SM: Surface Mount



- NOTES:
1. (C) REPRESENTS CRITICAL DIMENSION.
  2. NOTE DELETED.
  3. NOTE DELETED.
  4. CONFIRM THAT PARTS FACE MATCH THIS PRINT.
  5. ALL PARTS RoHS COMPLIANT AS OF REVISION K.

UNLESS OTHERWISE SPECIFIED, DIMENSIONS ARE IN MM. TOLERANCES ARE:

DECIMALS	ANGLES
.X: ±.38	3'
.XX: ±.25	
.XXX: ±.10	

DO NOT SCALE DRAWING  
 INSULATOR: PART RATED UL 94V-0, BLACK  
 CONTACT: PHOS BRONZE  
 SHELL: Cu/Ni PLATED BRASS

MAX FLASH ALLOWED: .051  
 MAX GATE VESTIGE: .051

F:\DWG\MISC\MKTG

**PROPRIETARY NOTE**  
 THIS DOCUMENT CONTAINS INFORMATION CONFIDENTIAL AND PROPRIETARY TO SAMTEC INC. AND SHALL NOT BE REPRODUCED OR TRANSFERRED TO OTHER DOCUMENTS OR DISCLOSED TO OTHERS OR USED FOR ANY PURPOSE OTHER THAN THAT FOR WHICH IT WAS OBTAINED WITHOUT THE EXPRESSED WRITTEN CONSENT OF SAMTEC INC.

SHEET SCALE: 1:2

<b>samtec</b>		CODE: 55322
520 PARK EAST BLVD. NEW ALBANY, IN 47150 (812) 944-6733 P.O. BOX 1147 TWX: 810-540-4085		
DESCRIPTION: Mini USB, RA, 5 Pin, Type AB, Single, SMT		
DWG. NO. MUSB-05-X-AB-SM-A-X-XX		
BY: J. RILEY 03/23/04	SHEET 1 OF 1	