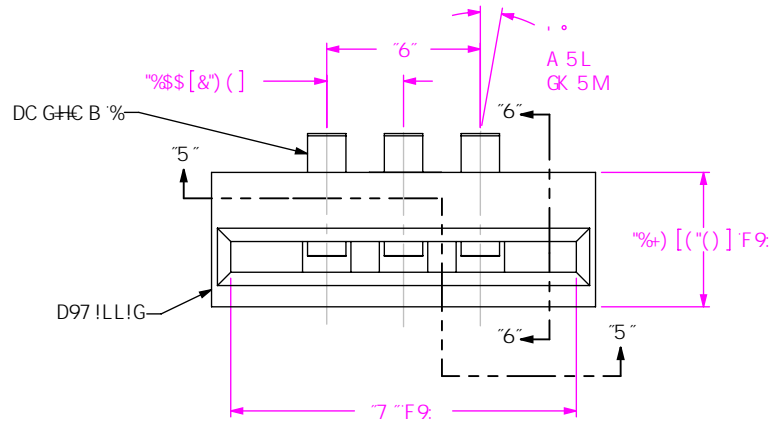


8C'BCH  
G75@:FC A  
H-GDF-BH



D97!LL!LL!LL!QLL

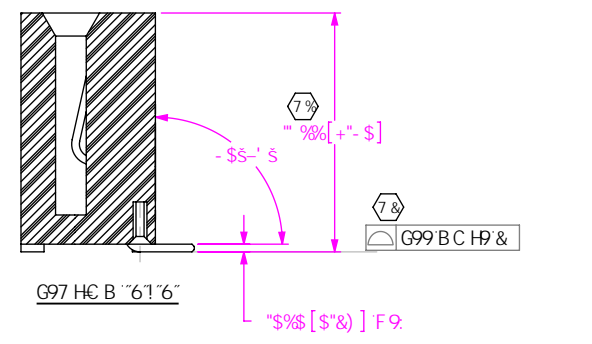
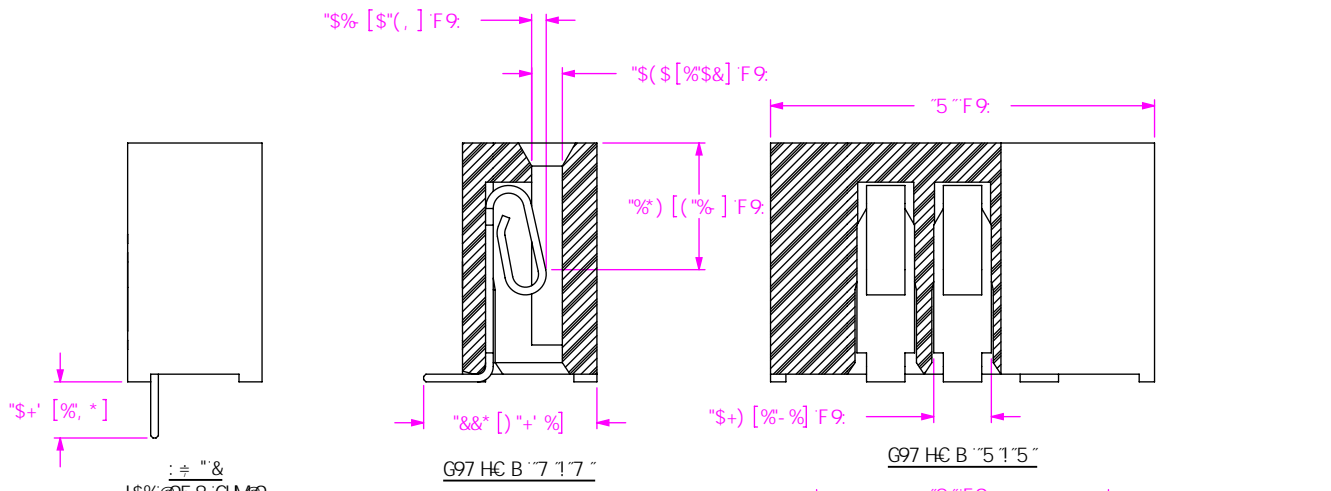
Bc'C: DC GHC BG  
!\$' z!\$+z!\$&

C DHC BG  
!5.5@: BA 9B HD-B  
.....fl G9'D97!LL!G5zG99: ÷ " & t  
!@. @ 7?B: "7 @  
.....fl G9'D97!LL!G/ ' @!\$-!HA L  
.....fG99: ÷ " " L

@58'GM@  
!\$% GF5 ÷ <H!5 @  
.....fG99: ÷ " & t  
!\$&: C FA 98 'H5 @

F.C.K G97 ÷ 7 5HC B  
!G'GB; @ fl G9'D97!LL!QLL

D@HB:  
!H'HB fl G97!%+\$!\$&H  
!HA .A 5H@'HB fl G97!%+\$!\$&H



!\$%@58'GM@  
fD97!\$'!\$%HA IGG<C K B L  
fB@C -B!DFC 7 9G: C F!\$&@58'GM@L

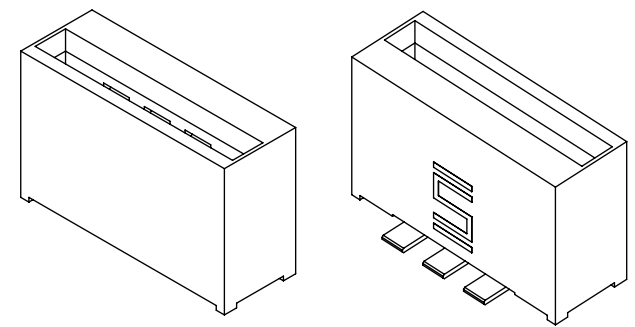
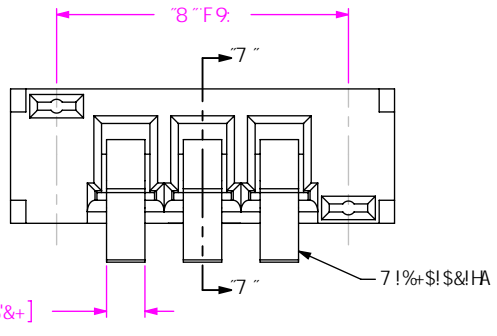


TABLE 1

NUMBER OF POSITIONS	"A"	"B"	"C"	"D"	"E"	"F"
-03	.500	.200	.450	.380	.380	NA
-07	.900	.600	.850	.780	.780	.357
-10	1.200	.900	1.150	1.080	1.080	.457

BC HG  
% (7) f9DF 9G9BHG5 7F#7 5@8A 9BGC B"  
&" 7CD@5B5F+MHC 69K H-B "\$\$"  
" " 6! FF 5@C K 5B7 9." "\$\$% A 5L"  
("A-B-A I A DI G-C I H: C F 7 9.") @6 69 CF9F9 @C K"  
)"A 5L A I A '5@C K 56@9 6C K." "\$\$& -B7 <#B7 < 5: HF 5G9A 6@M: CF 1\$%@58'GM@9

I B @GG C H: 9FK @9 (G97 ÷ 98z  
8-A 9BGC BG5F9-B 'B7 <9G"  
HC @9F5B7 9G' 5F9.  
897 A 5@G .....5B; @9G  
"LL. ±\$%0' O" .....&"  
"LLL. ±\$S) 0% O  
"LLLL. ±\$S&S OS) %O

DFC DF 9H5 FMBC H@  
H: 68C 71A 9B H7 C B15 8G B: C FA 5HC B  
7 C B: 89B H5 @5B8 DFC DF 9H5 FMBC  
G5A H7 Z B7 "5B8 G: 5@B C H69 F 90FC 81 7 9B  
C F H5BG 9F 9B 1C C H: 9F 8C 71 A 9B H6 C F  
8 67 @C 98 H C H: 9F G C F I 98B : C F 5BM  
DI FDC 09 C H: 9F H: 5B H: 5HK <7 < H: 5G  
C 6H5 898 K H: C I H: 9L DF 9G98 K F H@B  
7 C B @98 H C: G5A H7 Z B7 "

)&\$ D5F? 95GH6@ 8ZB9K '5@5BMZ-B (+) \$  
D<C B 9; %&L - ((1\* + ..... 5L; %&L - ( ) ) \$ (+  
YIA UJ; )&Z 4 G5A H7 'Wc a ..... Wc XY.)' ) &&

A5HF-5@  
BQ @HC F: @ D27 C @F 6@57?  
7 C B H57 H' 5'cm +s&) HA \$

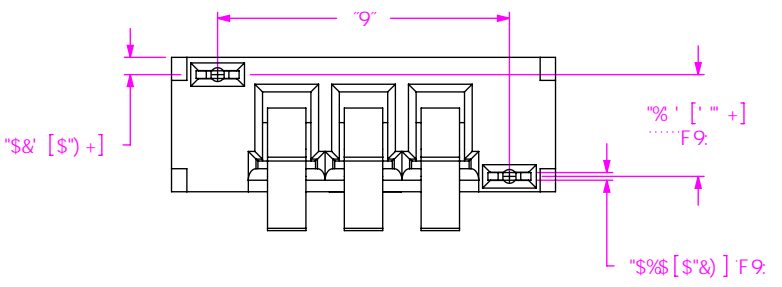
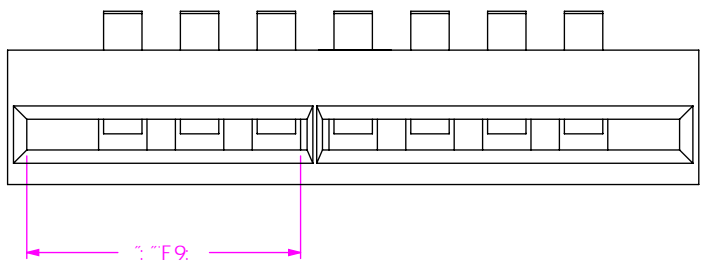
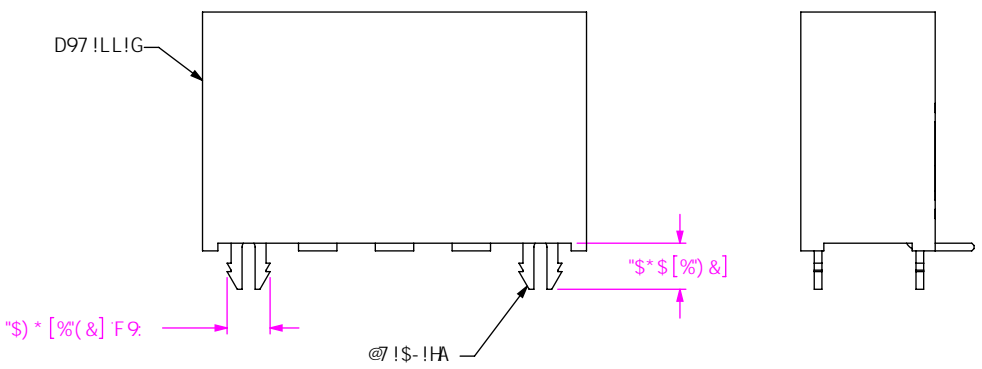
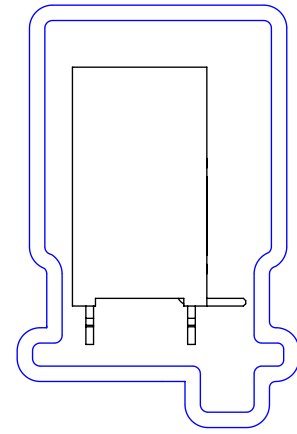
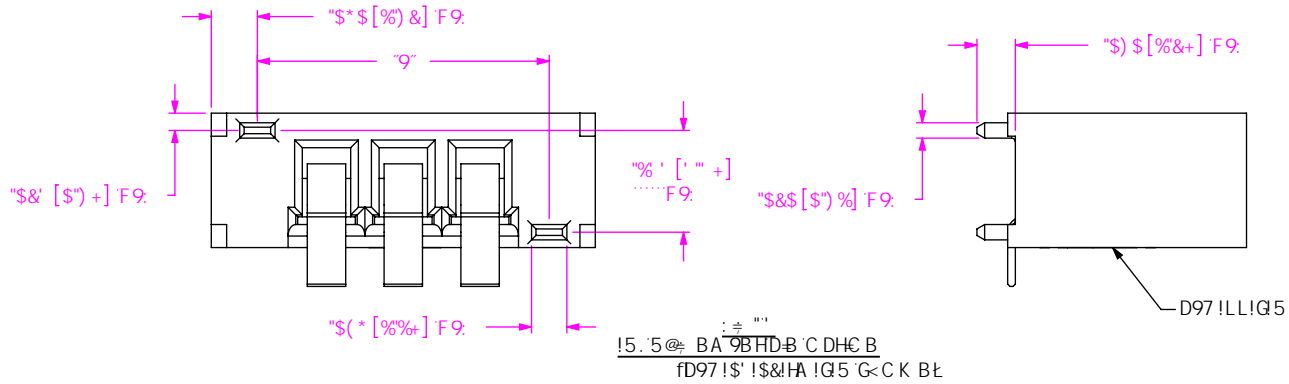
8C'BCH G75@9 8F5K B: G-99HG75@9 (%  
89G7 F@HC B:  
8K: "BC"  
D97!LL!LL!LL!QLL

6M 9F 7 'A \$) #/ ( #&\$S% G< 99H% C : &

: .PXK [ Pa ] Pa \_H PD97 ILL!LL!LL!QLL!IA ?HG@8FK

F9J €€B '9

D57?5: B; U-9K  
H 69: DH%&(!\$%+,  
D@; .HD!\$+



DFC.DF-9B5.FMBC.H9  
H: 69C71A 98H7C B16B G-B CFA5HC B  
7 C B- 698H595B8 DFC DF 985FMBC  
GSA H97 2 8 7 \* 5 B 8 G- 5 8 8 B C H 6 9 F 9 0 F C 8 1 7 9 8  
CF HF 5 B G 9 F 9 8 HC CH 9F 8 C 7 1 A 9 8 H G C F  
8 4 7 @ 6 9 8 HC CH 9 F G C F I 0 9 8 : C F 5 B M  
DI FDC 0 9 CH 9 F H 5 B H 5 H K < 7 < # H 5 G  
C 6 H 5 B 9 8 K H < C I H H 9 9 L D F 9 0 9 8 K F # H 6 8  
7 C B G 9 8 HC : GSA H97 2 8 7 \*  
  
8 C ' B C H G 7 5 @ 9 8 F 5 K - B ;  
  
G: 99H G 7 5 @ 9 ( : %



) & \$ D5 F ? 9 5 G H 6 @ 8 2 B 9 K : 5 @ 5 B M : B ( + ) \$  
D < C B 9 ; % & L - ( ( ! \* + ' : ; . , - / ( ) \$ ( +  
Y I A U J . ) : ; < . 4 G S A H 9 7 ' W e a ..... W e X Y . ) ) ' & &

8 9 6 7 F 0 H C B .  
DC K 9 F ' 9 8 ; 9 7 5 F 8 ' 5 G G 9 A 6 @ M

8 K : " B C "  
D97 ILLILLILLI!LL!LL

6 M 9 F 7 ' A \$ ) # / ( # & \$ % G < 9 9 H & C : &

! @ . @ 7 ? B ; - 7 @ D C D H C B  
f D 9 7 ! \$ ' ! \$ & H A ! Q @ 7 ' G < C K B L

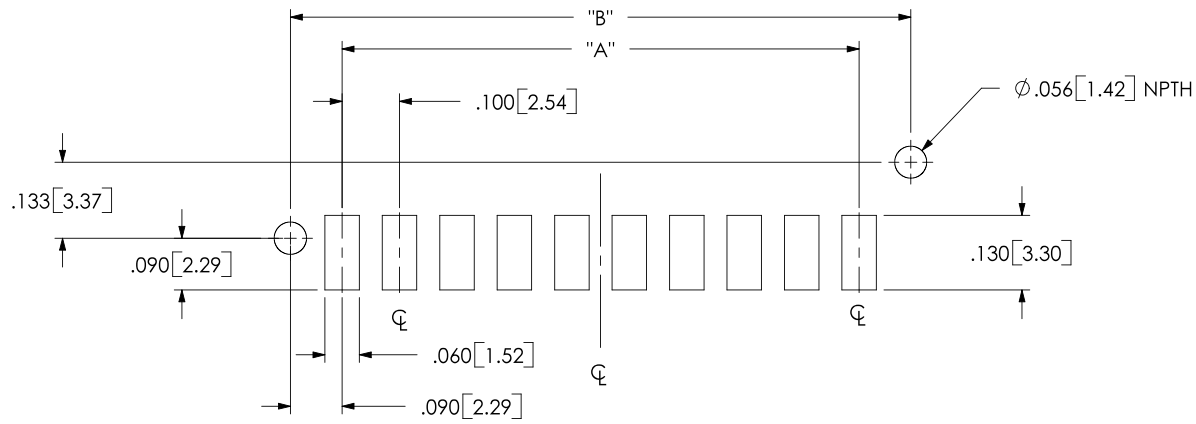


TABLE 1		
POSITION	"A"	"B"
-03	.200	.380
-07	.600	.780
-10	.900	1.080

FIGURE 1  
SURFACE MOUNT -10 POSITION ALIGNMENT PIN OPTION SHOWN

ALL DIMENSIONS ARE SYMMETRIC ABOUT THE CENTERLINE.

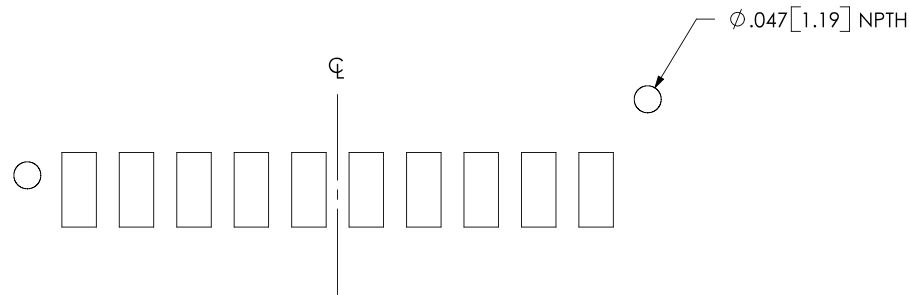


FIGURE 2  
SURFACE MOUNT -10 POSITION LOCKING CLIP OPTION SHOWN  
(SAME AS FIGURE 1 EXCEPT WHERE SHOWN)



**PROPRIETARY NOTE**  
THIS DOCUMENT CONTAINS INFORMATION CONFIDENTIAL AND PROPRIETARY TO SAMTEC, INC. AND SHALL NOT BE REPRODUCED OR TRANSFERRED TO OTHER DOCUMENTS OR DISCLOSED TO OTHERS OR USED FOR ANY PURPOSE OTHER THAN THAT WHICH IT WAS OBTAINED WITHOUT THE EXPRESSED WRITTEN CONSENT OF SAMTEC, INC.

**SAMTEC**

520 PARK EAST BLVD, NEW ALBANY, IN 47150  
PHONE: 812.944.6733 FAX: 812.948.5047  
e-Mail: [INFO@SAMTEC.COM](mailto:INFO@SAMTEC.COM) CODE: 55322

NOTE:  
STENCIL TO BE .0060[.152] THICK.

TABLE 2	
POSITION	"A"
-03	.200
-07	.600
-10	.900

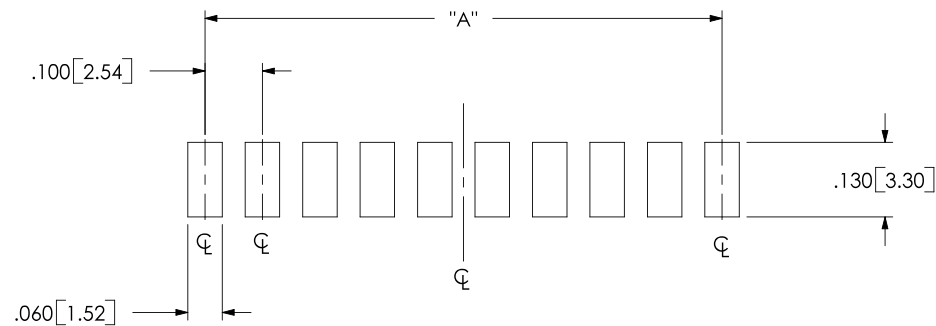


FIGURE 3  
-10 POSITION SHOWN

ALL DIMENSIONS ARE SYMMETRIC ABOUT THE CENTERLINE.



**PROPRIETARY NOTE**  
THIS DOCUMENT CONTAINS INFORMATION CONFIDENTIAL AND PROPRIETARY TO SAMTEC, INC. AND SHALL NOT BE REPRODUCED OR TRANSFERRED TO OTHER DOCUMENTS OR DISCLOSED TO OTHERS OR USED FOR ANY PURPOSE OTHER THAN THAT WHICH IT WAS OBTAINED WITHOUT THE EXPRESSED WRITTEN CONSENT OF SAMTEC, INC.

**SAMTEC**

520 PARK EAST BLVD, NEW ALBANY, IN 47150  
PHONE: 812.944.6733 FAX: 812.948.5047  
e-Mail: [INFO@SAMTEC.COM](mailto:INFO@SAMTEC.COM) CODE: 55322

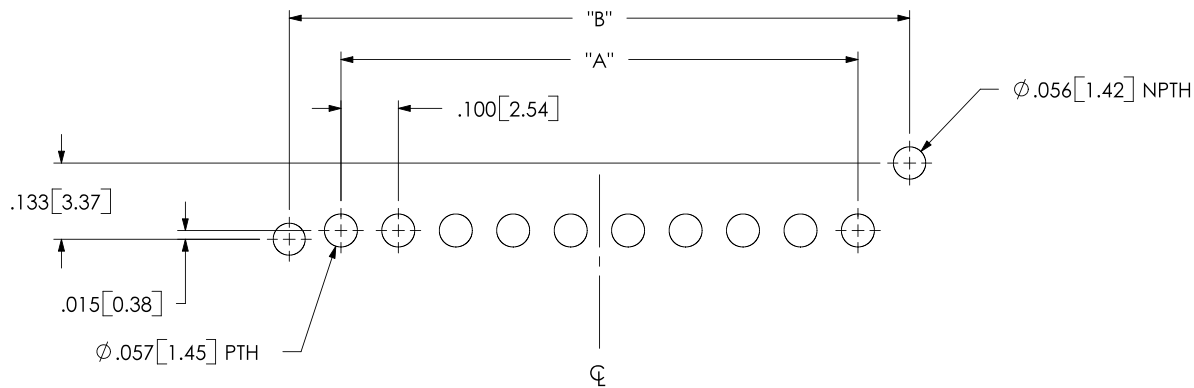


TABLE 3		
POSITION	"A"	"B"
-03	.200	.380
-07	.600	.780
-10	.900	1.080

FIGURE 4  
THRU HOLE -10 POSITION ALIGNMENT PIN OPTION SHOWN

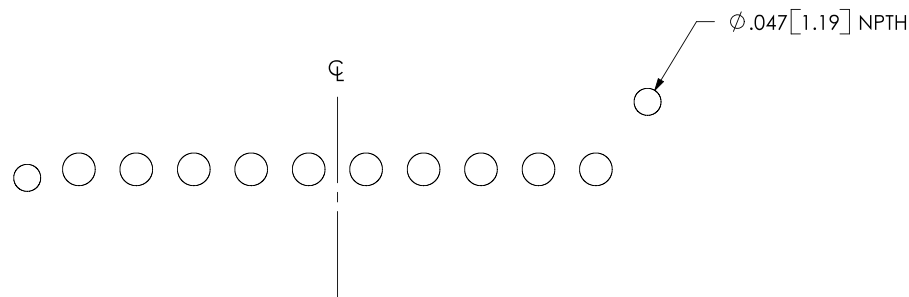


FIGURE 5  
THRU HOLE -10 POSITION LOCKING CLIP OPTION SHOWN  
(SAME AS FIGURE 4 EXCEPT WHERE SHOWN)



**PROPRIETARY NOTE**  
THIS DOCUMENT CONTAINS INFORMATION CONFIDENTIAL AND PROPRIETARY TO SAMTEC, INC. AND SHALL NOT BE REPRODUCED OR TRANSFERRED TO OTHER DOCUMENTS OR DISCLOSED TO OTHERS OR USED FOR ANY PURPOSE OTHER THAN THAT WHICH IT WAS OBTAINED WITHOUT THE EXPRESSED WRITTEN CONSENT OF SAMTEC, INC.

**SAMTEC**

520 PARK EAST BLVD, NEW ALBANY, IN 47150  
PHONE: 812.944.6733 FAX: 812.948.5047  
e-Mail: [INFO@SAMTEC.COM](mailto:INFO@SAMTEC.COM) CODE: 55322

NOTE:  
PADS TO BE TIN PLATED.  
ALL DIMENSIONS ARE SYMMETRIC ABOUT THE CENTERLINE.

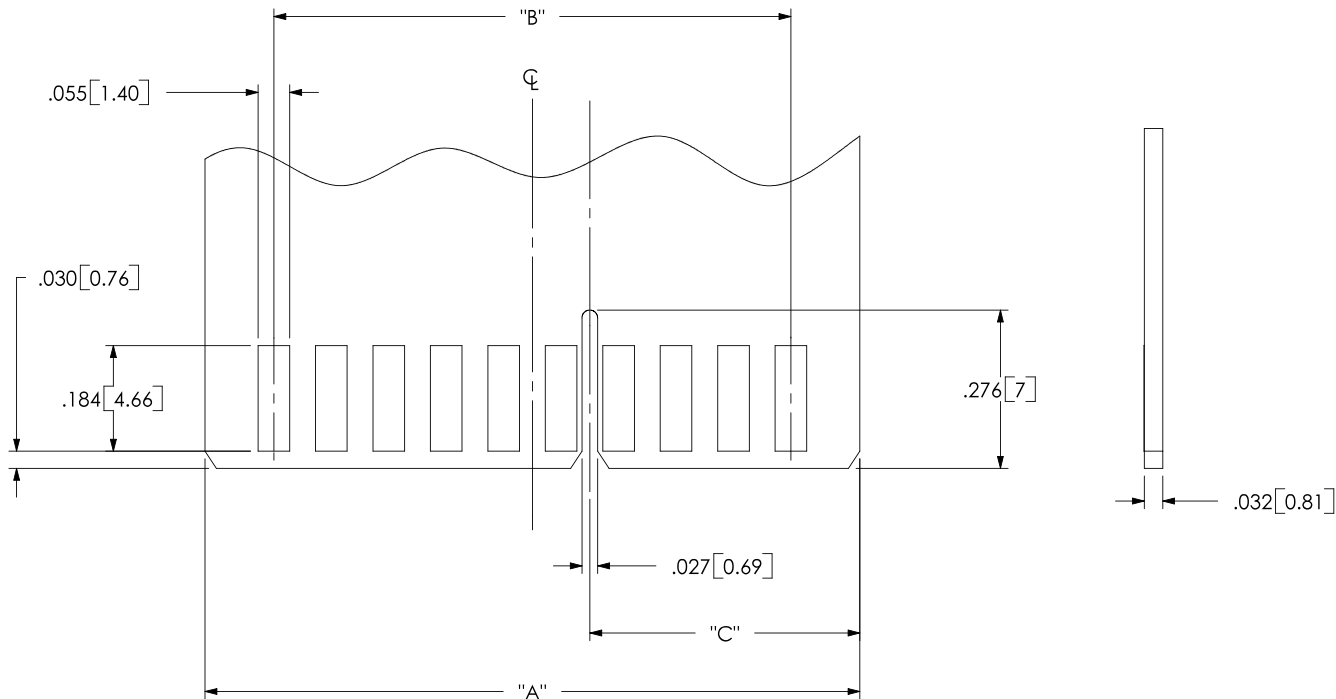


FIGURE 5  
-10 POSITION MATING CARD SHOWN

TABLE 4			
POSITION	"A"	"B"	"C"
-03	.440	.200	N/A
-07	.840	.600	.370
-10	1.140	.900	.470

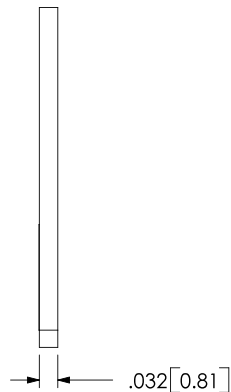


FIGURE 6  
-03 POSITION MATING CARD SHOWN  
(SAME AS FIGURE 5 WITHOUT POLARIZATION SLOT)



**PROPRIETARY NOTE**  
THIS DOCUMENT CONTAINS INFORMATION CONFIDENTIAL AND PROPRIETARY TO SAMTEC, INC. AND SHALL NOT BE REPRODUCED OR TRANSFERRED TO OTHER DOCUMENTS OR DISCLOSED TO OTHERS OR USED FOR ANY PURPOSE OTHER THAN THAT WHICH IT WAS OBTAINED WITHOUT THE EXPRESSED WRITTEN CONSENT OF SAMTEC, INC.

**SAMTEC**  
520 PARK EAST BLVD, NEW ALBANY, IN 47150  
PHONE: 812.944.6733 FAX: 812.948.5047  
e-Mail: [INFO@SAMTEC.COM](mailto:INFO@SAMTEC.COM) CODE: 55322