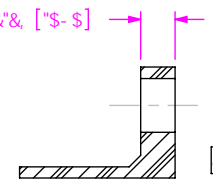
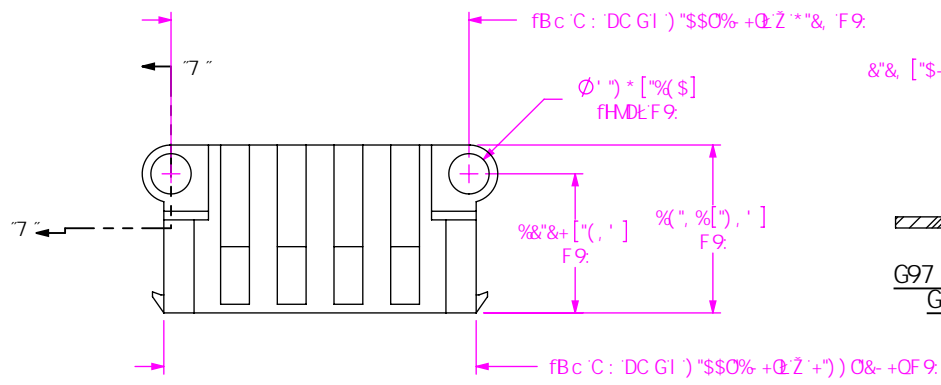


8C BCH
G7 5 @ FCA
H<GDF BH



Bc C: DC GHC BG
!\$&Z!(Z!\$*Z!\$,
@58 GHM@
!\$%
H5 @QB: Hk
!\$%: CF %) +OS* &Q
Hk-? D7 6
f! G9 G! 6!H% (\$!\$%L&L
!\$&: CF " % O%&) Q
Hk-? D7 6
f! G9 G! 6!H% (\$!\$&L&L
!\$%: CF &" *OS-' Q
Hk-? D7 6
f! G9 G! 6!H% (\$!\$' IL&

C DHC B
!G8 G7 F9K 8C K B
fG99: ÷ "%Z<H%&
!@ . @ 7 ? -B: 7 @
f! G9 @! \$!HA &
fG99: ÷ "%&Z<H&L&

F ÷ <H5B; @

D@HB: GD97 ÷ 7 5HC B

!@ G99H5 6@& &
!H G99H5 6@& &

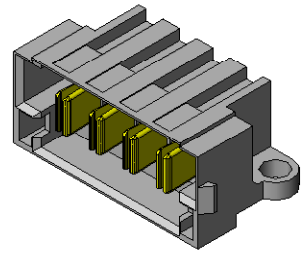
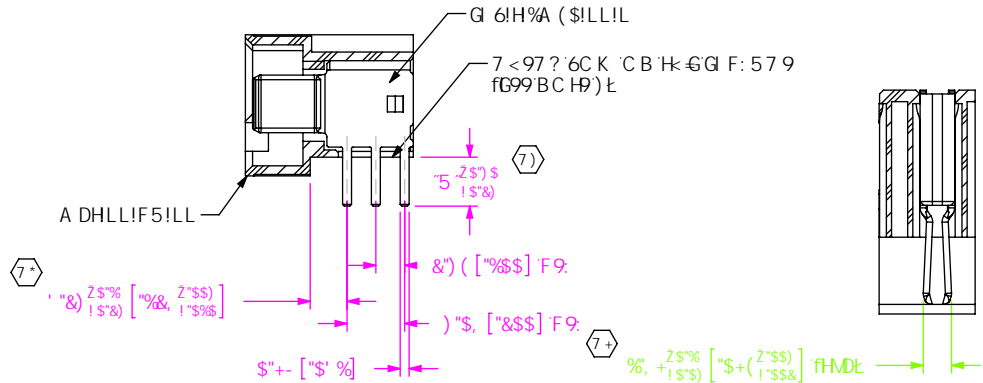
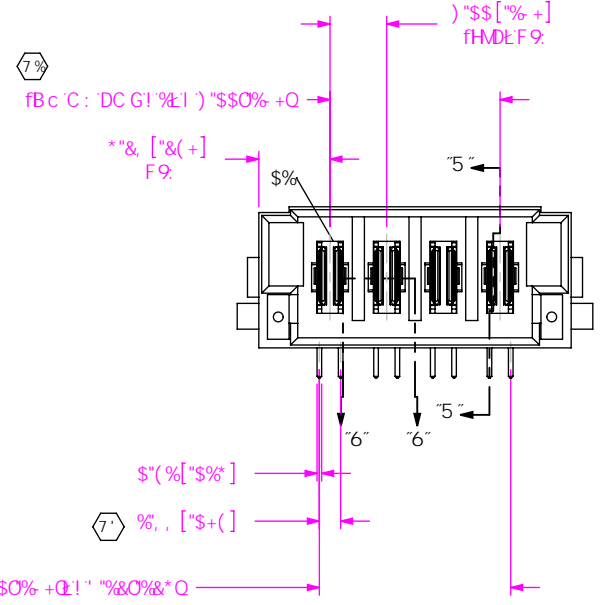
f! 1 BC HHC @98
f! 1 BC HF9@5G98: C F DFC 8! 7 HC B

TABLE 1

STYLE	"A"	SUB-T-1M40-XX-X
-01	2.72[.107]	SUB-T-1M40-01-X
-02	4.32[.170]	SUB-T-1M40-02-X
-03	3.51[.138]	SUB-T-1M40-03-X

TABLE 2

PLATING	POWER PIN CONTACT AREA	POWER PIN TAIL	SIGNAL PIN CONTACT AREA	SIGNAL PIN TAIL
-L	LIGHT GOLD	MATTE TIN	LIGHT GOLD	MATTE TIN
-T	MATTE TIN	MATTE TIN	LIGHT GOLD	MATTE TIN



BC H9G
% 7 F9DF9G9BH5 7 F #H 5 @8 A 9BGC B"
&" 6! FF 5 @C K 5B7 9: "\$ \$, OS\$) OA 5L"
" "A B A I A 'DI G<C I H: CF7 9: (') B O% @Q
(" D5FHGC '69D57 ? 5: 98 'B HF5MG"
) "6C K '5 @C K 98 '5H\$ "\$ \$ & A #A A 'OS\$ & #B B Q
* "A B A I A !@ 'DI @C I H: CF7 9: '&' B (&) @Q

<p>1 B @9G C H 9FK G9 GD97 ÷ 98 Z 8 A 9BGC BG5F9-B A @A 9HFG HC @F5B7 9G 5F9. 897 A 5@G : @G " L : + \$ " OS\$ O) & * " LL : + \$ % OS\$ O " LLL : + \$ \$) % OS\$ & SO</p>	<p>DFC DF 9H5 FMBCH H<G8 71 A 9B7 C B16 8G B: CFA 5HC B 7 C B: @9B H5 @5B8 DFC DF 9H5 FMC GSA H7 Z 47 " 5B8 G: 5 @B C H69 F9DFC 81 7 98 C F H5B G 9F98 HC C H 9F 8C 71 A 9B H C F 8 47 @ 98 HC C H 9F G C F I 98 : C F 5B M DI FDC @9 C H 9F H 5B H 5H K < 7 < H K 5G C 6H 5 98 K H C I H H 9 9 L D F 9G 98 K F H 98 7 C B @98 HC : GSA H7 Z 47 "</p>	<p>samtec) & \$ D5 F ? 95 GH 6 @ 8 Z B 9 K ' 5 @ 5 B M Z B (+) % D < C B 9 ; % & L - ((! + ')))) 5 L ; % & L - (,) \$ (+ Y I A U J ; j o z 4 G 5 A H 7 ' W c a W C X Y)) ' &&</p>
<p>A 5HFF 5@ B G @HC F . @ D 27 C @ C F . 6 @ 5 7 ? 7 C B H 5 7 H 7 C D D 9 F 5 @ C M</p>	<p>897 F DHC B. F ÷ <H5B; @ DC K 9F HFA B 5 @ 8K: "BC" A DHLL!\$%LL!L!F5!LL 6M 7 @MK % # % # \$ \$ + G < 99 H % C : &</p>	

: .PBK : PA 67 PA ? H PA DHLL!\$%LL!L!F5!LL!A ?H@88FK

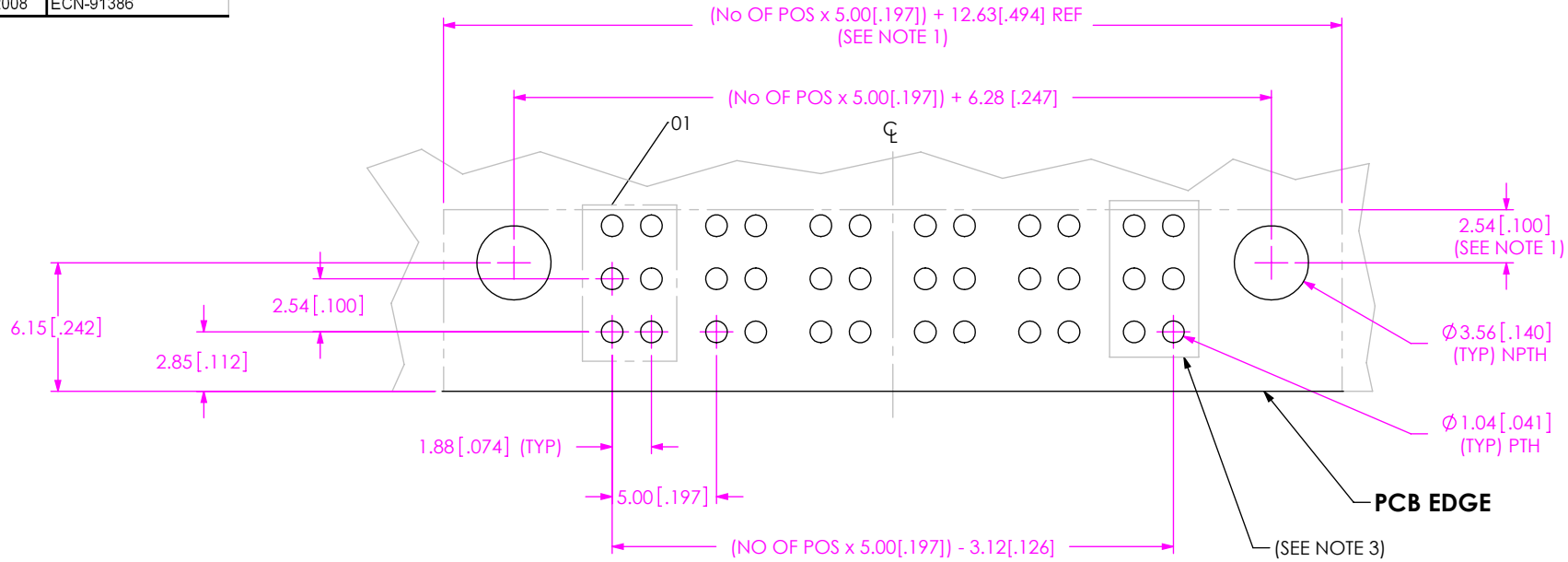


FIG. 1
PCB LAYOUT FOR MPT-XX-XX-X-RA-SD SHOWN

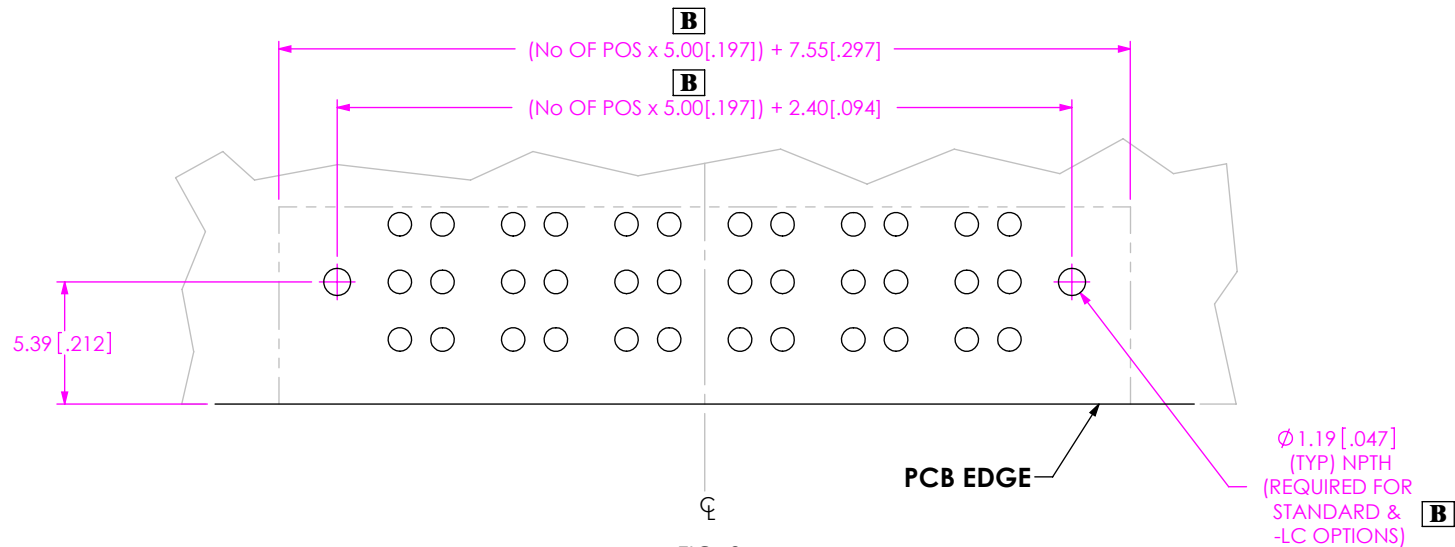


FIG. 2
PCB LAYOUT FOR MPT-XX-XX-X-RA-LC SHOWN
(SAME AS FIG. 1, UNLESS OTHERWISE STATED)

NOTES:

1. CONNECTOR ENVELOPE DIMENSIONS. OTHER COMPONENTS PLACED ON PCB SHALL AVOID THIS ZONE.
2. ALL DIMENSIONS ARE SYMMETRIC ABOUT THE CENTERLINE.
3. EACH GROUP HOLDS ONE POWER PIN.
4. A CARRIER TAB FOR WAVE SOLDERING IS RECOMMENDED.

DESIGNED & DIMENSIONED
IN MILLIMETERS

F:\DWG\MISC\Mktg\MPT-XX-XX-X-RA-XX-FOOTPRINT.SLDDRW

PROPRIETARY NOTE

THIS DOCUMENT CONTAINS INFORMATION CONFIDENTIAL AND PROPRIETARY TO SAMTEC, INC. AND SHALL NOT BE REPRODUCED OR TRANSFERRED TO OTHER DOCUMENTS OR DISCLOSED TO OTHERS OR USED FOR ANY PURPOSE OTHER THAN THAT WHICH IT WAS OBTAINED WITHOUT THE EXPRESSED WRITTEN CONSENT OF SAMTEC, INC.



520 PARK EAST BLVD., NEW ALBANY, IN 47150
PHONE: 812-944-6733 FAX: 812-948-5047
e-Mail: info@SAMTEC.com code: 55322