

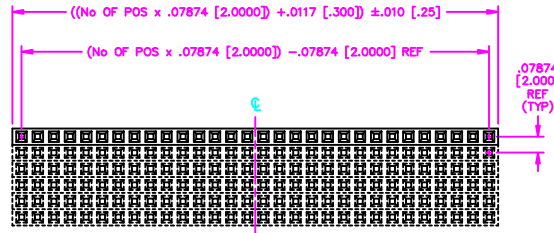
FIG. 1

UNLESS OTHERWISE NOTED

DIMENSIONS ARE IN INCHES TOLERANCES ARE:

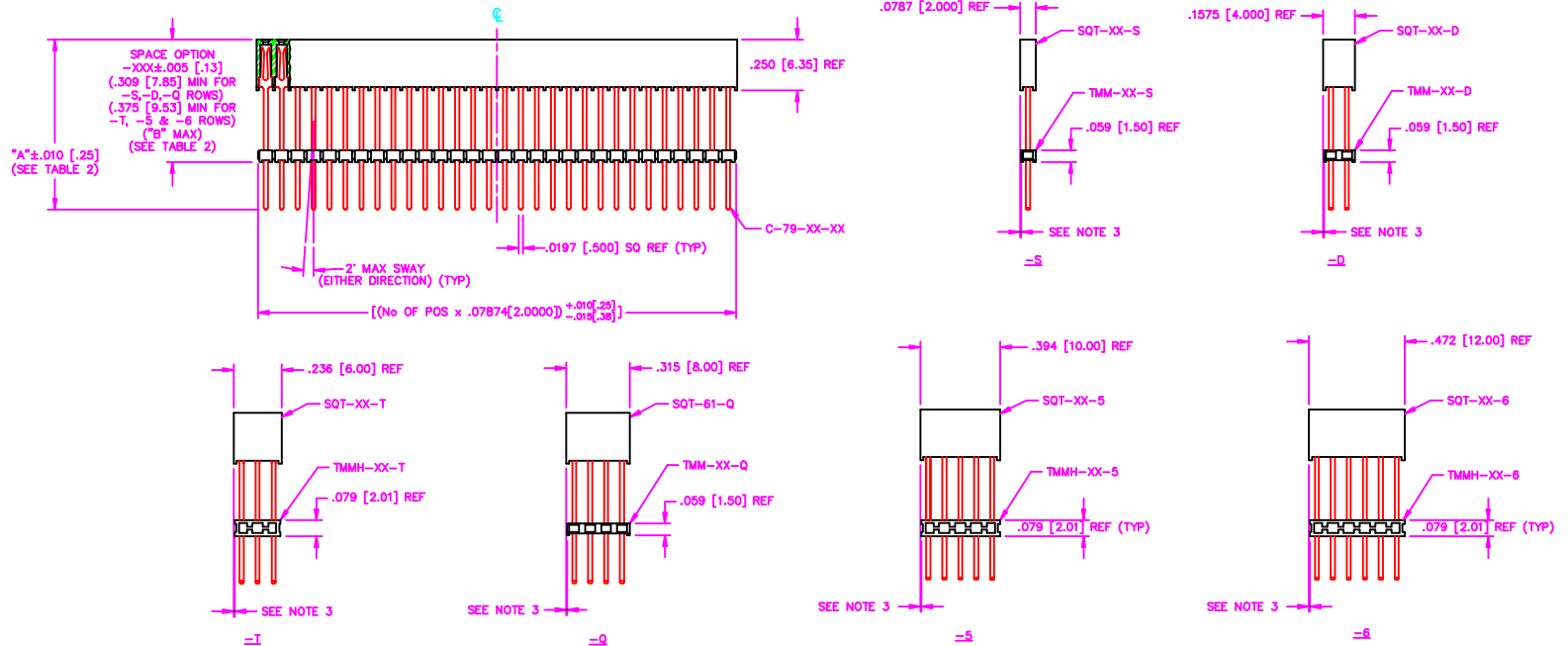
ONE PLACE DECIMALS ± .1[.25] THREE PLACE DECIMALS ± .005[.127] ANGLES ± 2°
 TWO PLACE DECIMALS ± .01[.25] FOUR PLACE DECIMALS ± .0020[.051]

TITLE: **ELEVATED SQT ASSM**
 DWG NO: **ESQT-1XX-XX-XX-X-XXX-XXX-XX**
 SHEET 1 OF 2



**** - MW OPTION, DO NOT DESIGN IN. SAMTEC WILL ONLY SUPPORT EXISTING BUSINESS 2/07/02.**

- POSITION SPECIFICATION**
 -02 THRU -50 POSITIONS PER ROW (SEE NOTE 1)
- LEAD STYLE SPEC**
 -02: USE C-79-02-XX
 -03: USE C-79-03-XX
- PLATING SPECIFICATION**
 -F: FLASH SELECTIVE GOLD (USE C-79-XX-F)
 -FM: FLASH SELECTIVE, MATTE TIN REMAINDER (USE C-79-XX-F)
 -L: LIGHT SELECTIVE (USE C-79-XX-L)
 -LM: LIGHT SELECTIVE, MATTE TIN REMAINDER (USE C-79-XX-L)
 -S: SELECTIVE (USE C-79-XX-S)
 -SM: SELECTIVE, MATTE TIN REMAINDER (USE C-79-XX-S)
 -M: MEDIUM SELECTIVE (USE C-79-XX-M)
 -MM: MEDIUM SELECTIVE, MATTE TIN REMAINDER (USE C-79-XX-M)
 -H: HEAVY GOLD (USE C-79-XX-H)
 -G: GOLD (USE C-79-XX-G)
 -GF: LIGHT GOLD, GOLD FLASH REMAINDER (-02 LEAD STYLE ONLY. USE C-79-02-GF)
- OPTION**
 ** - MW: METAL WASHER (SEE FIG. 2, SHT. 2) (5 POS. MIN. 30 POS. MAX)
 N/A ON -S ROW SPEC
 (.080 [2.29] MIN. .300 [7.62] MAX TAIL FOR -F, -L & -S PLATING)
 (.080 [2.29] MIN. .482 [12.24] MAX TAIL FOR -G & -M PLATING)
- POLARIZATION OPTION**
 -XXX INDICATES POSITION (SEE FIG 3, SHT. 2) (USE PK-07-N)
- SPACE OPTION**
 .309 [7.85] MIN FOR -S, -D, -Q ROWS
 .375 [9.53] MIN FOR -T, -5 & -6 ROWS
 "B" MAX (SEE TABLE 2)
- ROW SPECIFICATION**
 -S: SINGLE (SEE -S)
 -D: DOUBLE (SEE -D)
 -T: TRIPLE (SEE -T & SEE NOTE 4)
 -Q: QUAD (SEE -Q)
 -5: FIVE (SEE -5 & SEE NOTE 4)
 -6: SIX (SEE -6 & SEE NOTE 4)



- NOTE:**
1. TOOLING TO BE DESIGNED TO PRODUCE UP TO 61 POSITIONS.
 2. THIS NOTE WAS DELETED.
 3. TMM/TMMH BODIES ARE NOT TO BE MORE THAN ±.005 FROM PLANE SET BY SQT BODY.
 4. -XM FOR T, 5 AND 6 ROW OPTIONS CANNOT WITHSTAND PB-FREE REFLOW PROCESSING.
 5. MAX CUT FLASH .020[.51]

LEAD STYLE	"A"	"B"
-02	.850 [21.59]	.800 [20.32]
-03	.458 [11.63]	.408 [10.36]

PLOT SCALE: 1=.44 / DIMSCALE: .3

PROPRIETARY NOTE
 THIS DOCUMENT CONTAINS INFORMATION CONFIDENTIAL AND PROPRIETARY TO SAMTEC INC AND SHALL NOT BE REPRODUCED OR TRANSMITTED TO OTHER DOCUMENTS OR DISCLOSED TO OTHERS OR USED FOR ANY PURPOSE OTHER THAN THAT FOR WHICH IT WAS OBTAINED WITHOUT THE EXPRESSED WRITTEN CONSENT OF SAMTEC INC.

CONTACT: PHOS BRONZE
 MATERIAL: COLOR: BLACK LCP

EXISPROD\ASSEMBLY\2MM ESQT-ASM

samtec

520 PARK EAST BLVD. NEW ALBANY, INDIANA 47150
 PHONE (812) 944-6733 P.O. BOX 1147
 CODE 55322

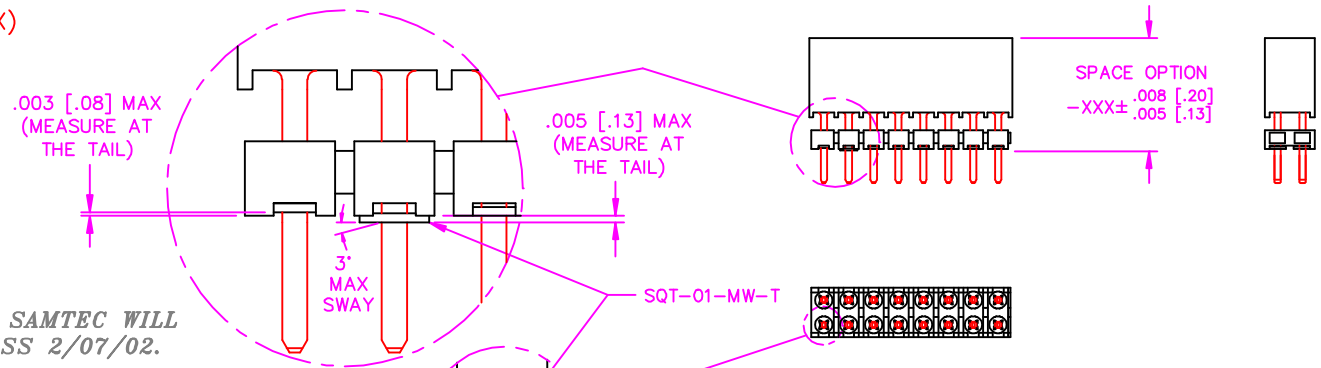
MADE BY: PURVIS 10-20-95

ESQT-1XX-XX-XX-X-XXX-XXX-XX
 SHEET 1 OF 2

FIG. 2

** -MW: METAL WASHER
(ONE PER POSITION)
(5 POS. MIN, 30 POS. MAX)

DIMENSIONS ARE IN INCHES		TOLERANCES ARE:		ELEVATED SQT ASSM	ESQT-1XX-XX-X-X-XXX-XXX-XX
ONE PLACE DECIMALS ± .1[2.5]	THREE PLACE DECIMALS ± .005[.127]	ANGLES	± 2°		
TWO PLACE DECIMALS ± .01[.25]	FOUR PLACE DECIMALS ± .0020[.051]				



** - MW OPTION, DO NOT DESIGN IN. SAMTEC WILL ONLY SUPPORT EXISTING BUSINESS 2/07/02.

-02 STYLE ONLY

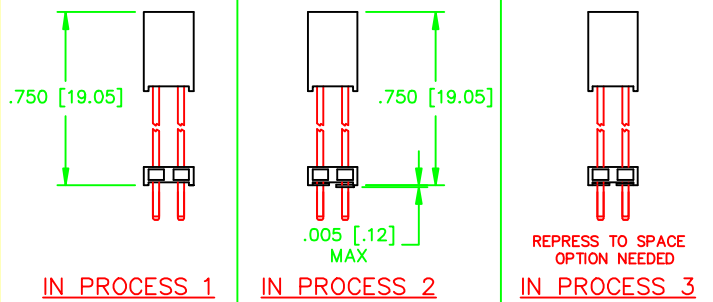


TABLE 1 (INCLUDES -MW OPTION)

STYLE	ROW	NO. OF POS.	PKG TUBE	TUBE PLUG
-02	-S	15-50 (-MW 5-30 POS)	PT-1-24-01-47	TP-24
-03	-S	15-50 (-MW 5-30 POS)	PT-1-24-01-46	TP-24
-02, -03	-S	02-14	LAYER PACKAGING	
-02	-D	15-50 (-MW 5-30 POS)	PT-1-24-01-34	TP-07
-03	-D	15-50 (-MW 5-30 POS)	PT-1-24-02-46	TP-03
-02, -03	-D	02-14	LAYER PACKAGING	
-02	-T	15-50 (-MW 5-30 POS)	PT-1-24-01-74	TP-07
-03	-T	15-50 (-MW 5-30 POS)	PT-1-24-02-29	TP-07
-02, -03	-T	02-14	LAYER PACKAGING	
-02	-Q	15-50 (-MW 5-30 POS)	PT-1-24-03-51	TP-13
-03	-Q	15-50 (-MW 5-30 POS)	PT-1-24-16-29	TP-07
-02, -03	-Q	02-14	LAYER PACKAGING	
-02	-5	15-50 (-MW 5-30 POS)	PT-1-24-01-56	TP-31
-03	-5	15-50 (-MW 5-30 POS)	PT-1-24-01-08	TP-13
-02, -03	-5	02-14	LAYER PACKAGING	
-02	-6	15-50 (-MW 5-30 POS)	PT-1-24-03-28	TP-13
-03	-6	15-50 (-MW 5-30 POS)	PT-1-24-04-56	TP-13
-02, -03	-6	02-14	LAYER PACKAGING	

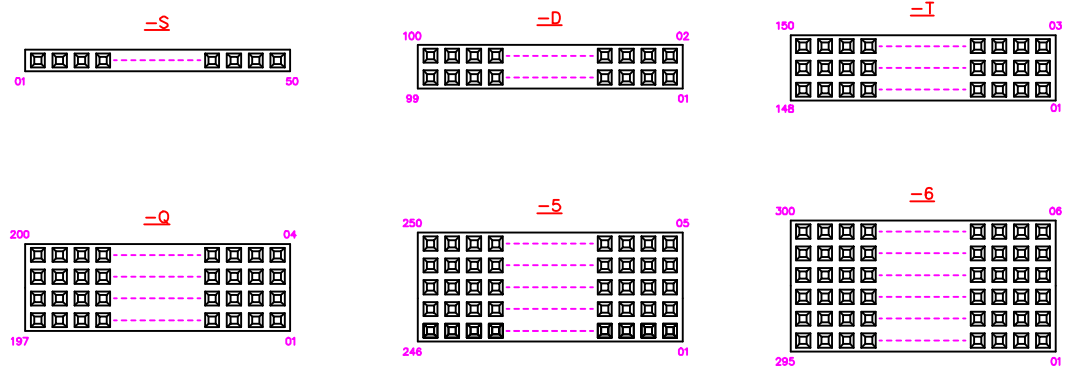


FIG. 3

POLARIZATION OPTION LOCATION
INSERT PK-07 INTO SPECIFIED POSITION AND BREAK OFF TAB

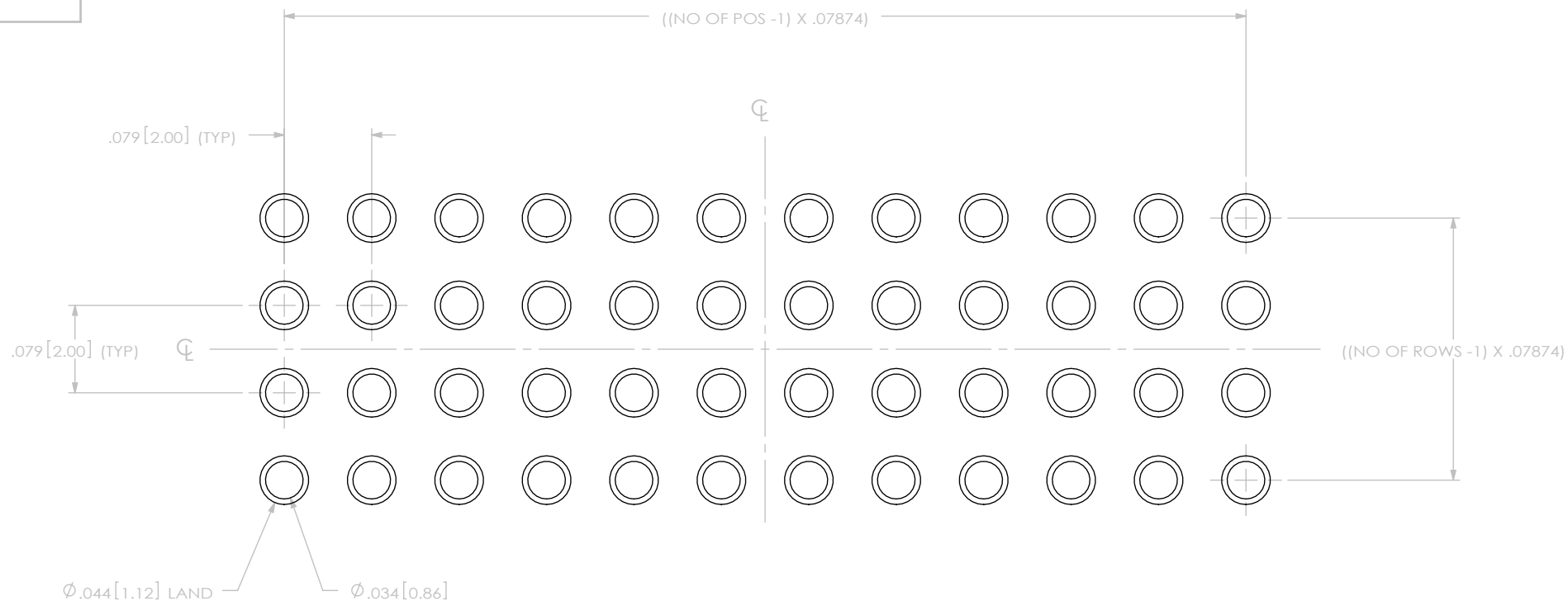
NOTE:
1. MINIMUM CONTACT RETENTION: 0.5 LB PER PIN.

PROPRIETARY NOTE
THIS DOCUMENT CONTAINS INFORMATION CONFIDENTIAL AND PROPRIETARY TO SAMTEC INC. AND SHALL NOT BE REPRODUCED OR TRANSMITTED TO OTHER DOCUMENTS OR DISCLOSED TO OTHERS OR USED FOR ANY PURPOSE OTHER THAN THAT FOR WHICH IT WAS OBTAINED WITHOUT THE EXPRESSED WRITTEN CONSENT OF SAMTEC INC.

PLOT SCALE: 1=.44 / DIMSCALE: .3

CONTACT: PHOS BRONZE MATERIAL: COLOR: BLACK LCP	samtec		MISC\MKTG ESQTMKT2
	520 PARK EAST BLVD. NEW ALBANY, INDIANA 47150 PHONE (812) 944-6733 P.O. BOX 1147 CODE 55322		
MADE BY:	PURVIS 10-20-95	ESQT-1XX-XX-X-X-XXX-XXX-XX SHEET 2 OF 2	

B	OZ	PECKERT
5/23/2008	ECN-91554	

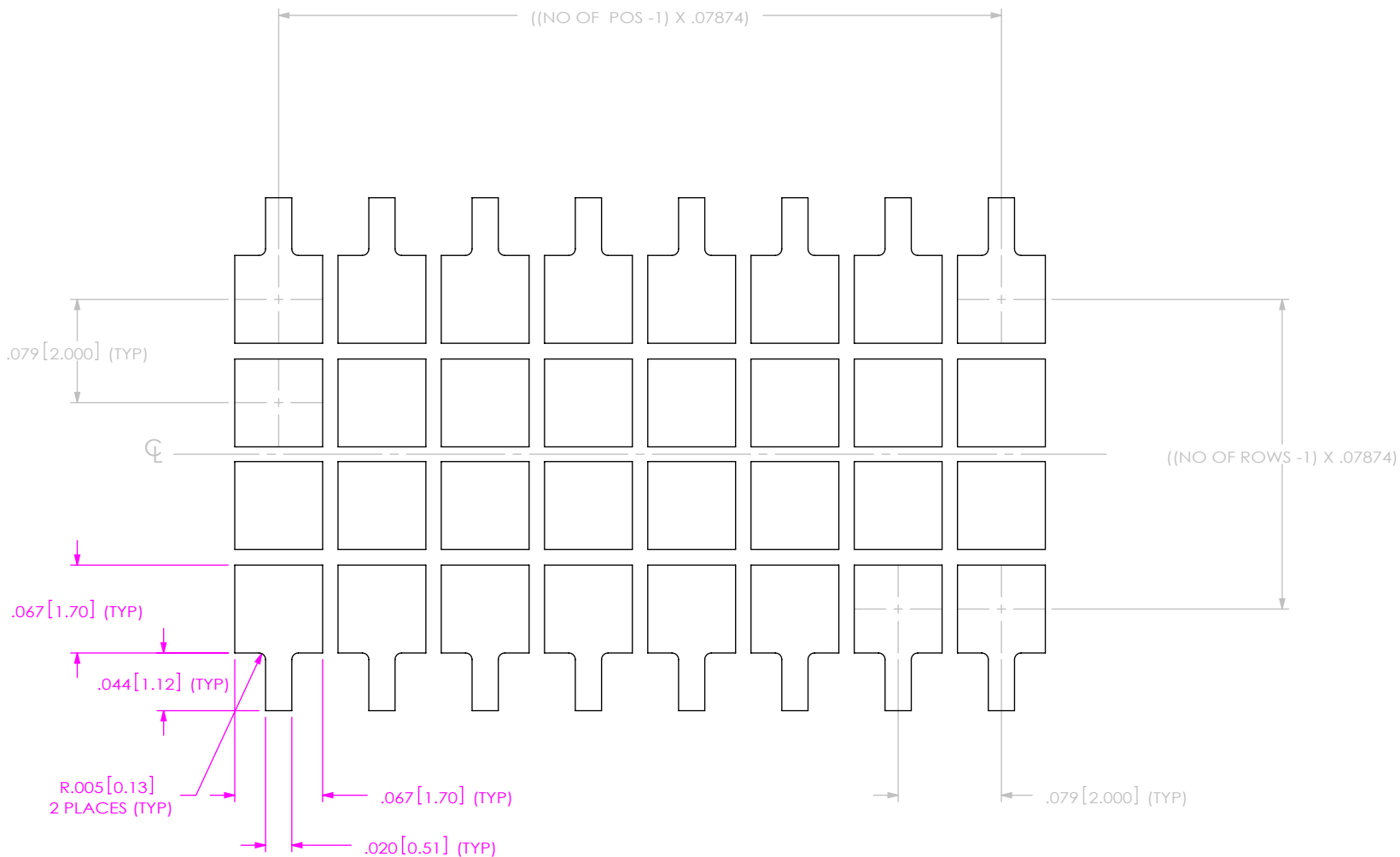


NOTE:
ALL DIMENSIONS SYMMETRICAL ABOUT THE CENTERLINE.

PROPRIETARY NOTE
THIS DOCUMENT CONTAINS INFORMATION CONFIDENTIAL AND PROPRIETARY TO SAMTEC, INC. AND SHALL NOT BE REPRODUCED OR TRANSFERRED TO OTHER DOCUMENTS OR DISCLOSED TO OTHERS OR USED FOR ANY PURPOSE OTHER THAN THAT WHICH IT WAS OBTAINED WITHOUT THE EXPRESSED WRITTEN CONSENT OF SAMTEC, INC.



520 PARK EAST BLVD, NEW ALBANY, IN 47150
PHONE: 812-944-6733 FAX: 812-948-5047
e-Mail: info@SAMTEC.com code: 55322



NOTE:
 1. ALL DIMENSIONS SYMMETRICAL ABOUT THE CENTERLINE.
 2. STENCIL THICKNESS TO BE $.006 [0.152]$.

PROPRIETARY NOTE
 THIS DOCUMENT CONTAINS INFORMATION CONFIDENTIAL AND PROPRIETARY TO SAMTEC, INC. AND SHALL NOT BE REPRODUCED OR TRANSFERRED TO OTHER DOCUMENTS OR DISCLOSED TO OTHERS OR USED FOR ANY PURPOSE OTHER THAN THAT WHICH IT WAS OBTAINED WITHOUT THE EXPRESSED WRITTEN CONSENT OF SAMTEC, INC.



520 PARK EAST BLVD, NEW ALBANY, IN 47150
 PHONE: 812-944-6733 FAX: 812-948-5047
 e-Mail: info@SAMTEC.com code: 55322