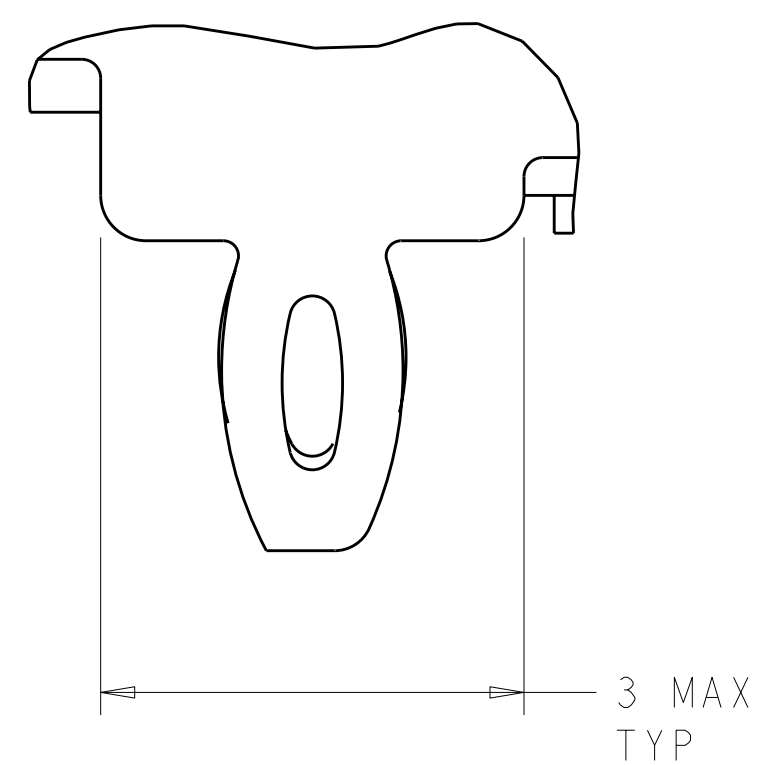


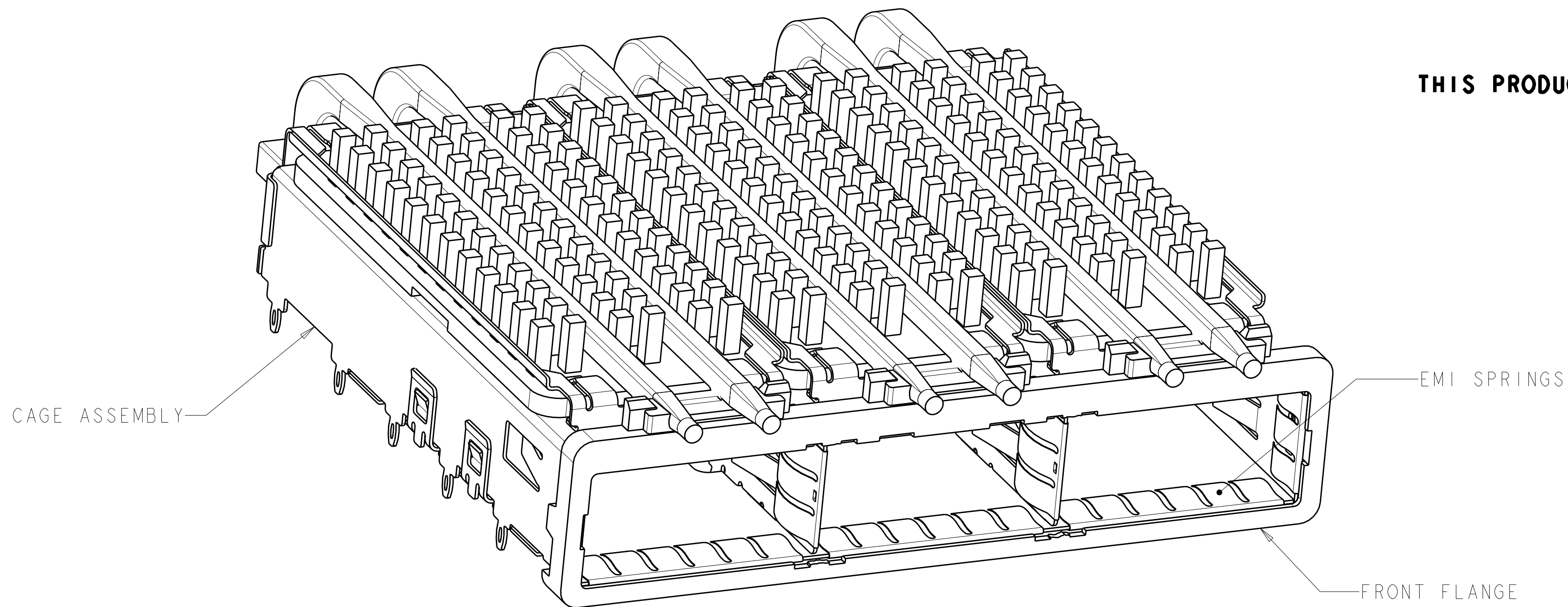
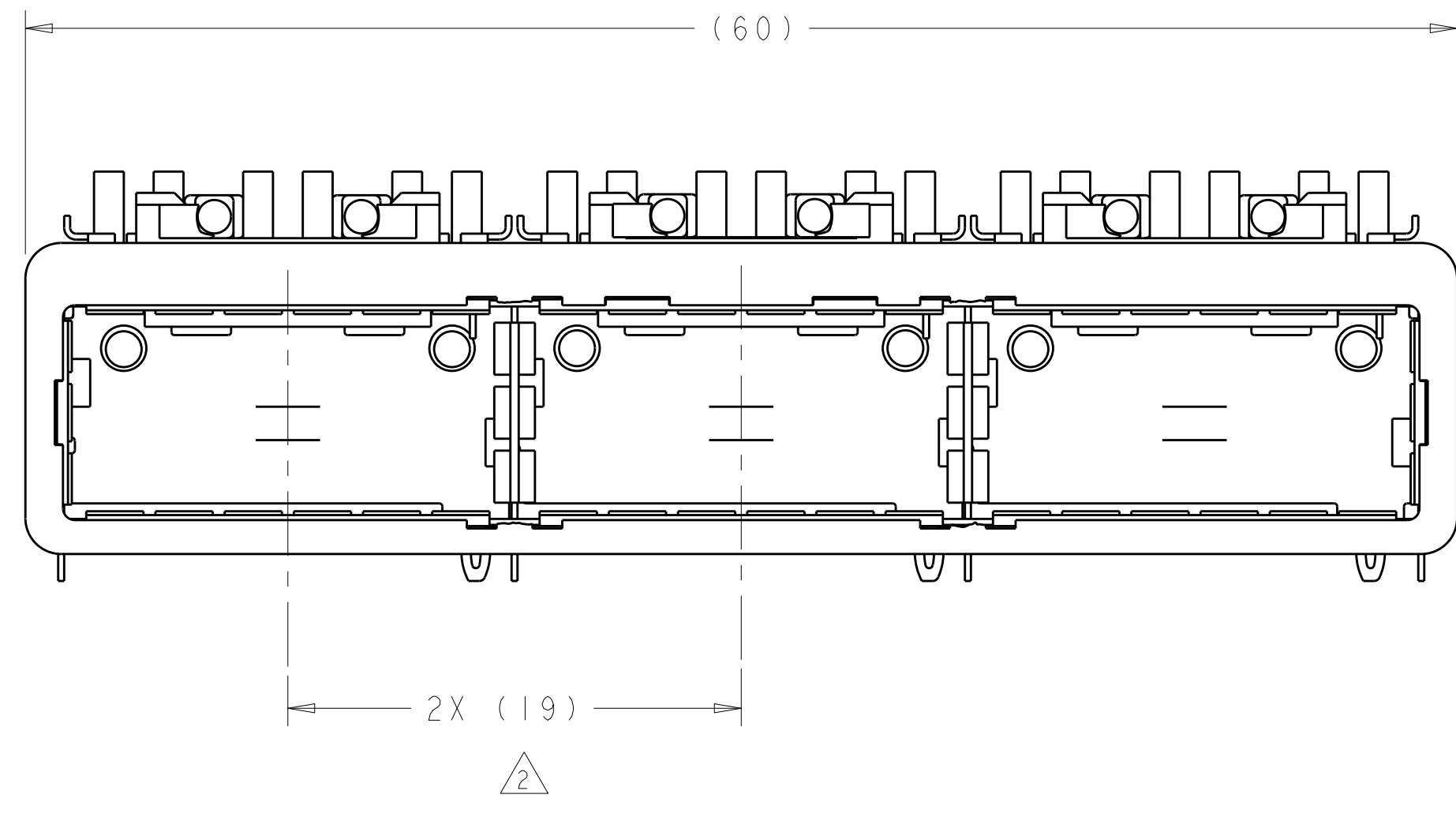
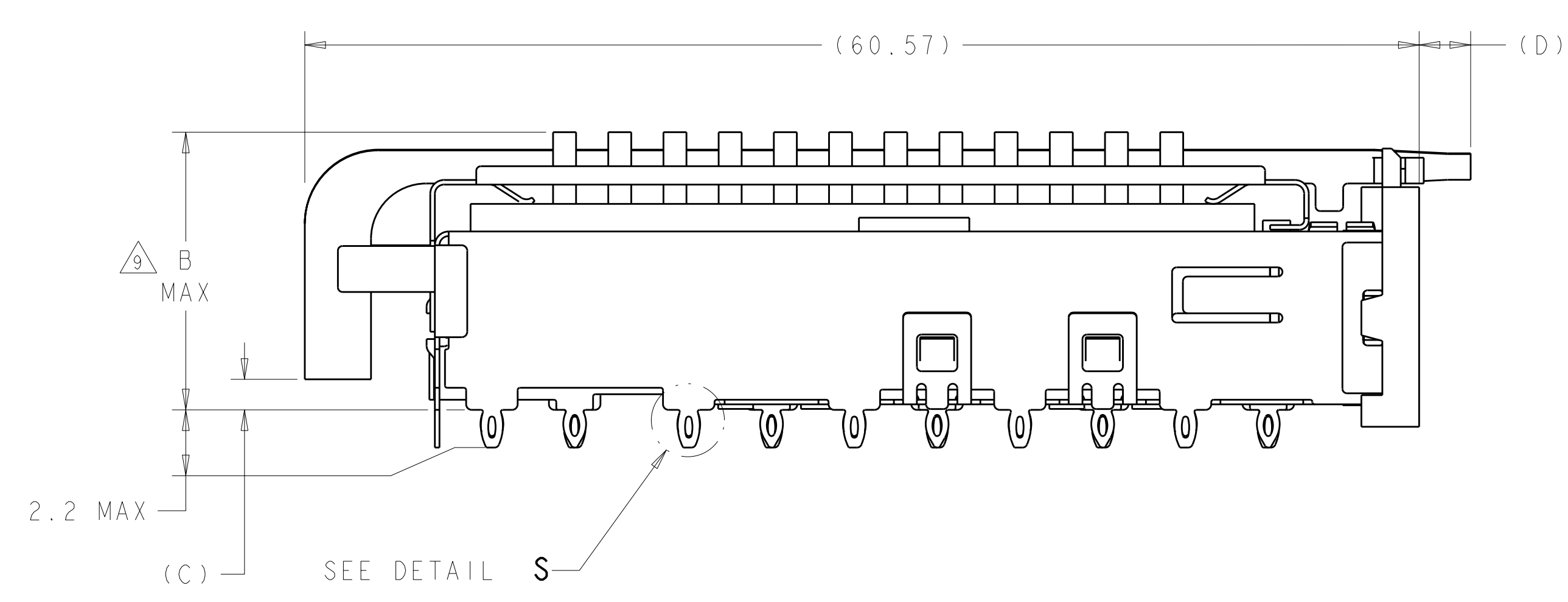
LOC	DIST	REV	DATE	BY	APPD
GP	00	A	17APR2009	CJV	JRP



DETAIL S
 SCALE 20:1

- 1 CAGE ASSEMBLY MATERIAL: NICKEL SILVER, 0.25 THICK
 HEAT SINK MATERIAL: ALUMINUM
 HEAT SINK CLIP MATERIAL: STAINLESS STEEL
 EMI SPRINGS MATERIAL: COPPER ALLOY
 FRONT FLANGE MATERIAL: ZINC ALLOY
 LIGHT PIPE MATERIAL: CLEAR POLYCARBONATE
- 2 PITCH BETWEEN PORTS OF ONE 1X3 CAGE ASSEMBLY.
- 3 SPACING BETWEEN CAGES ON THE SAME PC BOARD, TO BE SPECIFIED BY CUSTOMER, MUST COMPLY WITH MINIMUM DIMENSIONS SHOWN.
- 4 REFERENCE APPLICATION SPEC 114-13218 FOR RECOMMENDED DRILL HOLE DIAMETER AND PLATING THICKNESS.
- 5 DATUMS AND BASIC DIMENSIONS ESTABLISHED BY CUSTOMER.
- 6 DIMENSION F IS THE NOMINAL THICKNESS OF CUSTOMER SUPPLIED PC BOARD, SINGLE SIDED PC BOARD MINIMUM THICKNESS = 1.45mm, DOUBLE SIDED PC BOARD MINIMUM THICKNESS = 2.2mm PER QSFP
- 7 HEAT SINKS, LIGHT PIPES, AND HEAT SINK CLIPS SHIPPED ASSEMBLED TO CAGE ASSEMBLY. CAGE ASSEMBLY MAY BE PRESSED INTO THE PCB AS SHIPPED.
- 8 DATUM -A- IS TOP SURFACE OF PC BOARD.
- 9 DIMENSION APPLIES WITH MODULE INSERTED IN CAGE.
- 10 UNPLATED THRU HOLE.
- 11. MATES WITH QSFP MSA COMPATIBLE TRANSCEIVER.
- 12 SURFACE TRACES PERMITTED WITHIN THIS AREA EXCEPT WHERE CAGE STANDOFFS, SHOWN IN DETAIL S, CONTACT PC BOARD.
- 13 BASELINE FOR THESE DIMENSIONS IS THE CENTER OF COMPLIANT PIN HOLE.
- 14 DATE CODE (YYWWD) MARKED ON TOP OF CAGE AND CONCEALED BY HEAT SINKS APPLIES TO CAGE ASSEMBLY ONLY.

- 15 REFERENCE APP SPEC 114-13218 FOR GASKET THICKNESS CALCULATION.
- 16 EMI SPRING FINISH: 2µm MIN TIN
 FRONT FLANGE FINISH: 3µm MIN TIN OVER 1.27µm MIN NICKEL OVER 5.08µm MIN COPPER.
 HEAT SINK FINISH: NICKEL.
- 17 HEAT SINKS AND CLIPS SHIPPED ASSEMBLED TO CAGE ASSEMBLY. CAGE ASSEMBLY MAY BE PRESSED IN TO THE PCB AS SHIPPED. LIGHT PIPES, SHIPPED UNATTACHED, MUST BE ASSEMBLED BY CUSTOMER AFTER THE CAGE IS SEATED IN THE PCB.



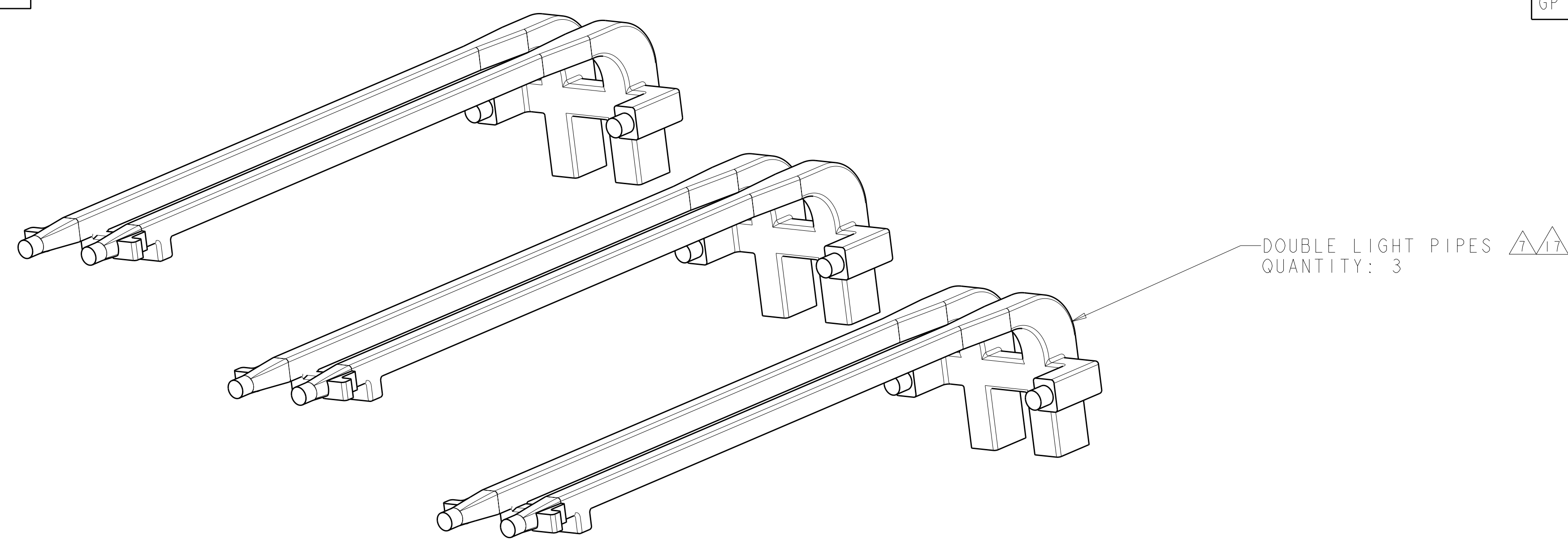
THIS PRODUCT HAS NOT COMPLETED VALIDATION/QUALIFICATION TESTING

Profile	E	D	C	B	HEAT SINK PROFILE	PART NUMBER
7	0.8-1.1	2.0	1.70	23.0	NETWORKING	2057042-8
7	0.8-1.1	2.0	1.70	16.0	SAN	2057042-7
12	0.8-1.1	2.0	1.70	13.7	PCI	2057042-6
7	1.3-1.4	5.7	2.15	16.0	SAN	2057042-5
12	1.3-1.4	5.7	2.15	13.7	PCI	2057042-4
7	0.8-1.1	2.8	1.70	23.0	NETWORKING	2057042-3
7	0.8-1.1	2.8	1.70	16.0	SAN	2057042-2
12	0.8-1.1	2.8	1.70	13.7	PCI	2057042-1

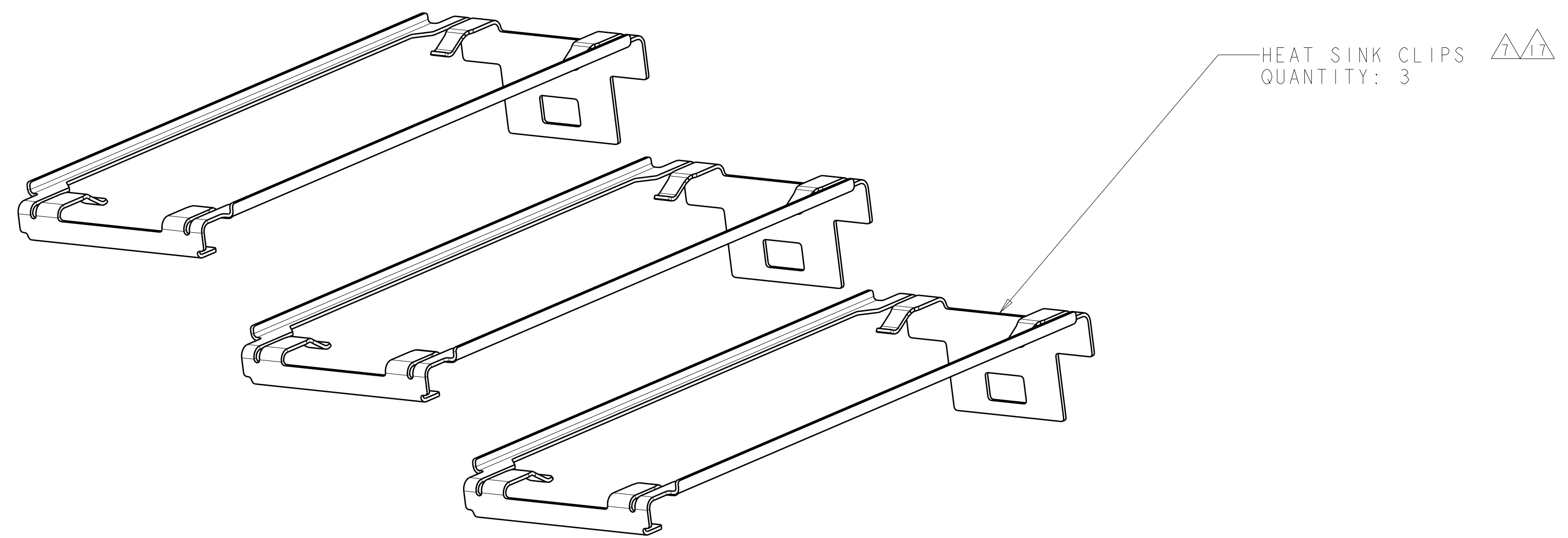
DIMENSIONS: mm 9 PLC ±0.1 1 PLC ±0.1 5 PLC ±0.013 4 PLC ±0.0001 ANGLES ±		TOLERANCES UNLESS OTHERWISE SPECIFIED: FINISH: 16		DWN: C. VALENTINE 28FEB2008 CHK: E. BRIGHT 28FEB2008 APVD: E. BRIGHT 28FEB2008 PRODUCT SPEC: 108-2286 APPLICATION SPEC: 114-13218 WEIGHT: - CUSTOMER DRAWING		Tyco Electronics Harrisburg, PA 17105-3608 NAME: 1X3 CAGE ASSEMBLY, BEHIND BEZEL, W/ LIGHT PIPES AND HEAT SINKS, QSFP SIZE: CAGE CODE DRAWING NO: A100779C=2057042 RESTRICTED TO: - SCALE: 4:1 SHEET 1 OF 5 REV A	
---	--	--	--	--	--	--	--

THIS DRAWING IS UNPUBLISHED. RELEASED FOR PUBLICATION 2007
COPYRIGHT 2007 BY TYCO ELECTRONICS CORPORATION. ALL RIGHTS RESERVED.

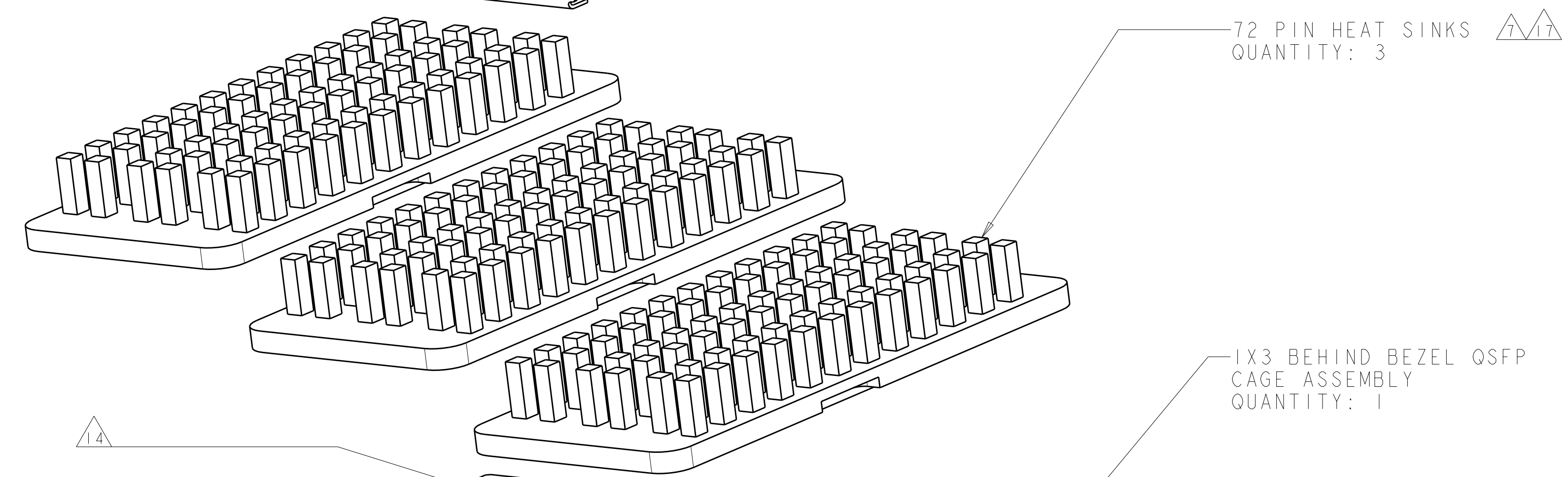
LOC	DIST	REVISIONS					
GP	00	P	LTB	DESCRIPTION	DATE	DWN	APVD
-	-	-	-	SEE SHEET 1	-	-	-



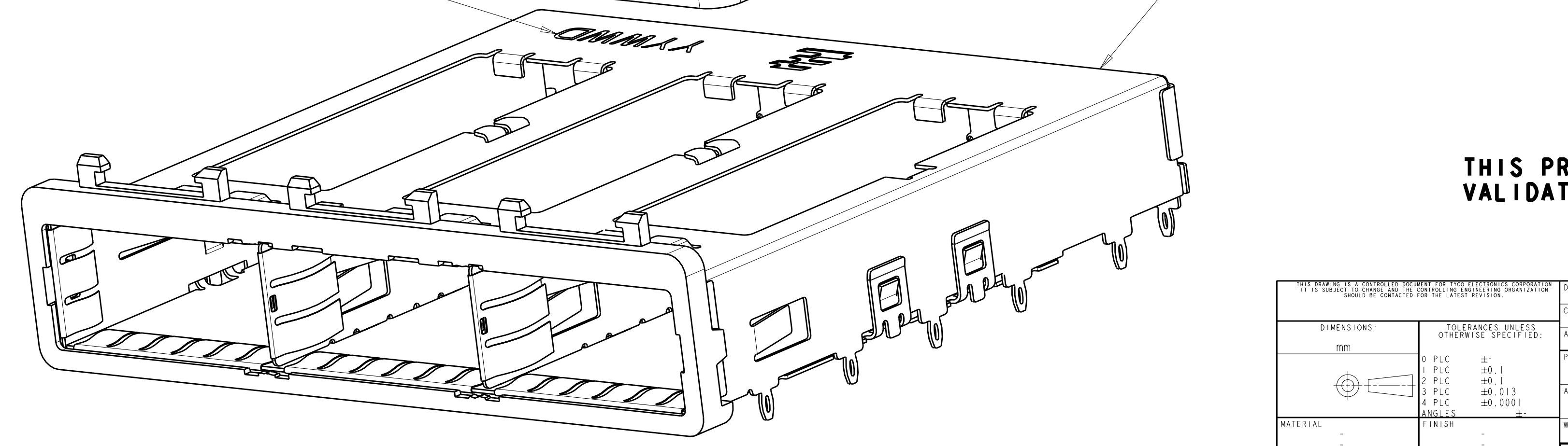
DOUBLE LIGHT PIPES
QUANTITY: 3



HEAT SINK CLIPS
QUANTITY: 3



72 PIN HEAT SINKS
QUANTITY: 3

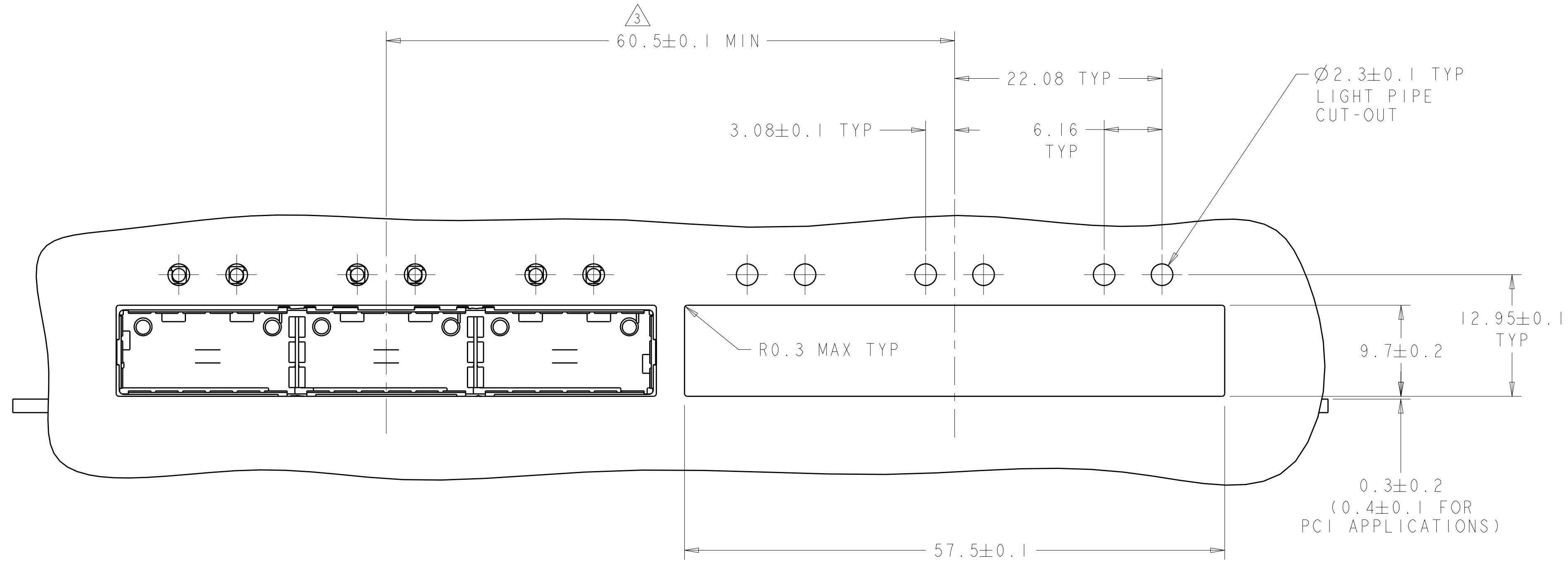


1X3 BEHIND BEZEL QSFP
CAGE ASSEMBLY
QUANTITY: 1

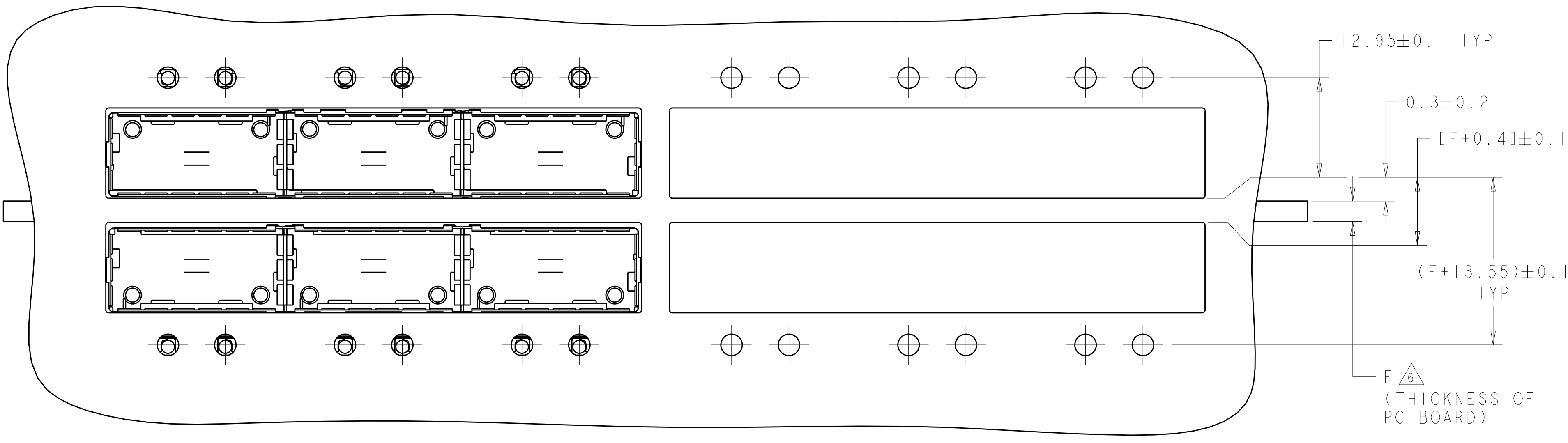
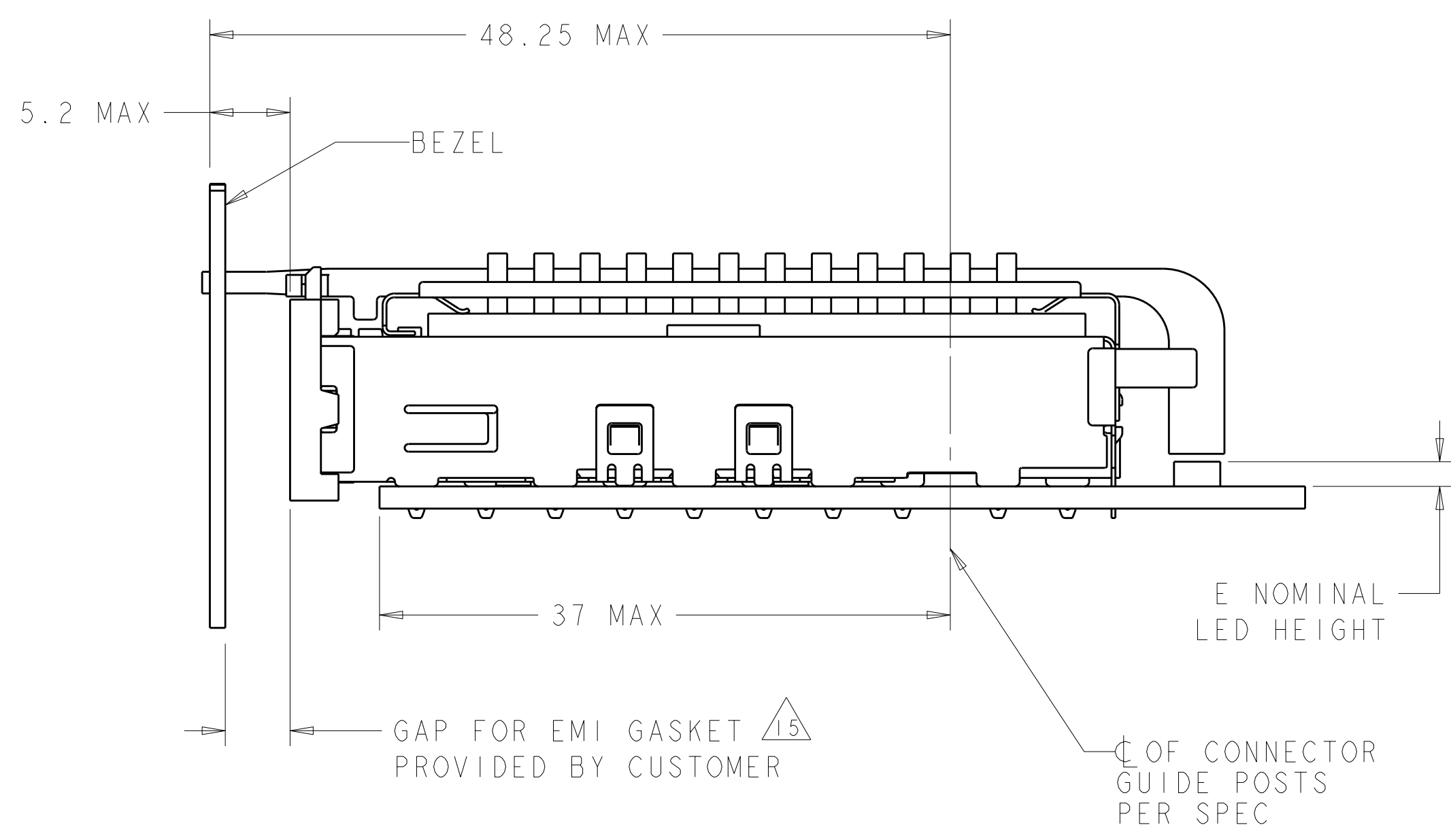
**THIS PRODUCT HAS NOT COMPLETED
VALIDATION/QUALIFICATION TESTING**

DIMENSIONS:		TOLERANCES UNLESS OTHERWISE SPECIFIED:		DWN C. VALENTI 28FEB2008		Tyco Electronics Tyco Electronics Harrisburg, PA 17105-3608	
mm		9 PLC ±.1		CHK E. BRIGHT 28FEB2008		NAME 1X3 CAGE ASSEMBLY, BEHIND BEZEL, W/ LIGHT PIPES AND HEAT SINKS, QSFP	
Ø		1 PLC ±0.1		APVD F. BRIGHT 28FEB2008		PRODUCT SPEC 108-2286	
Ø		5 PLC ±0.013		PRODUCT SPEC 114-13218		SIZE CAGE CODE DRAWING NO RESTRICTED TO	
Ø		4 PLC ±0.0001		WEIGHT		A100779C=2057042	
Ø		ANGLES ±.1		CUSTOMER DRAWING		SCALE 4:1 SHEET 2 OF 5 REV A	
FINISH							

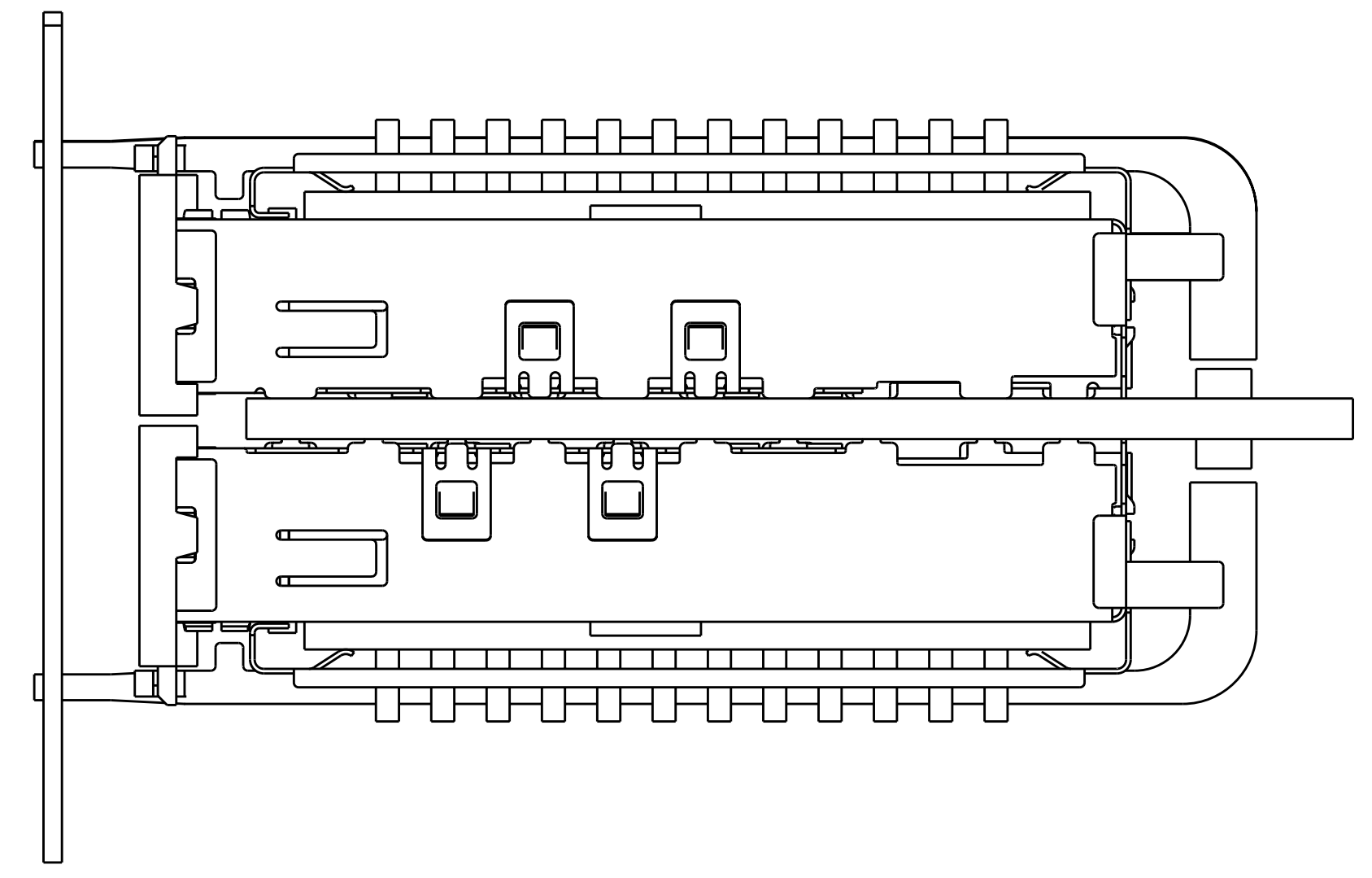
LOC	DIST	REV	DATE	BY	APPD	
GP	00					
REVISIONS			DESCRIPTION	DATE	DWN	APPD
			SEE SHEET 1			



ONE SIDED CONFIGURATION
 SCALE 3:1



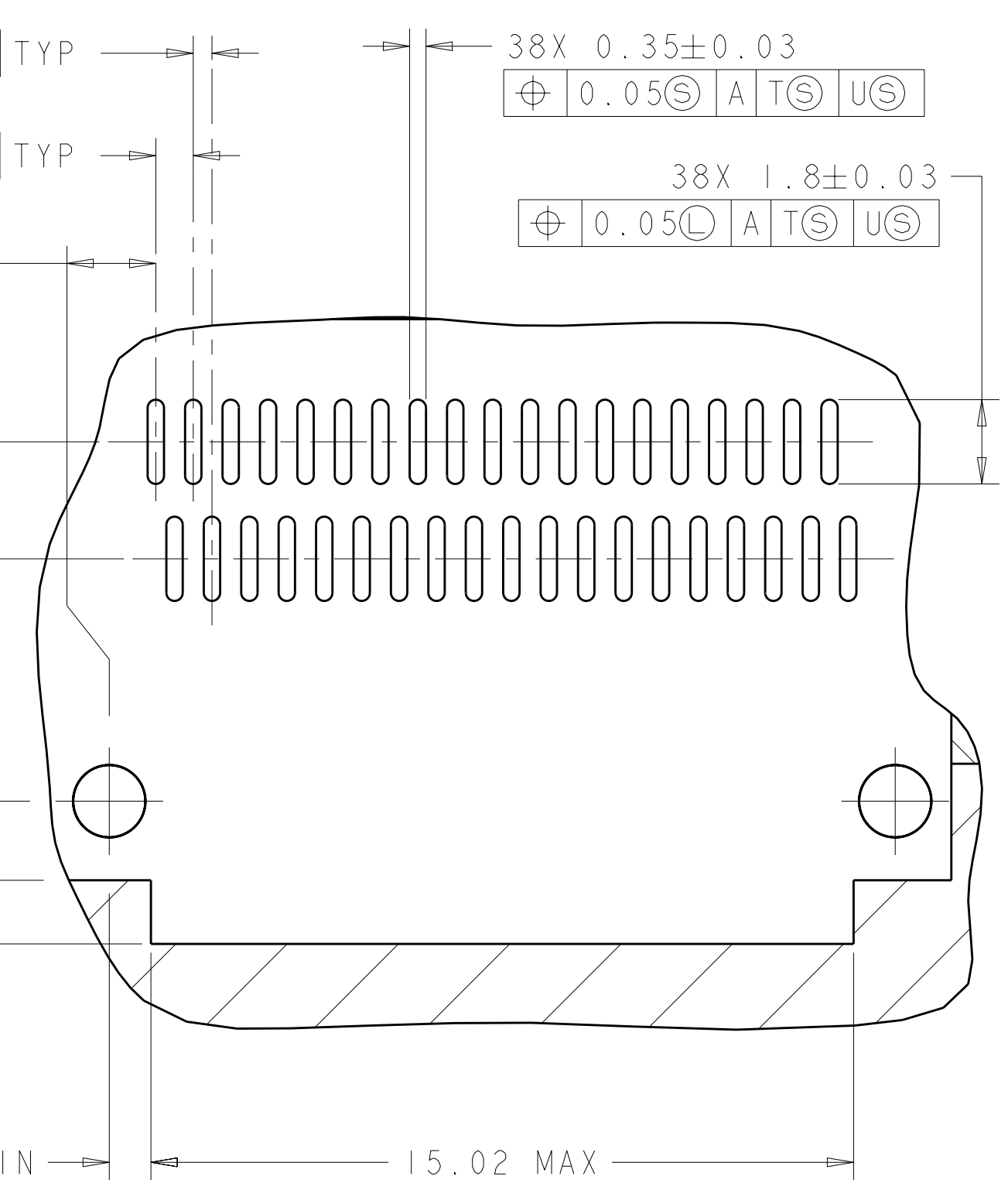
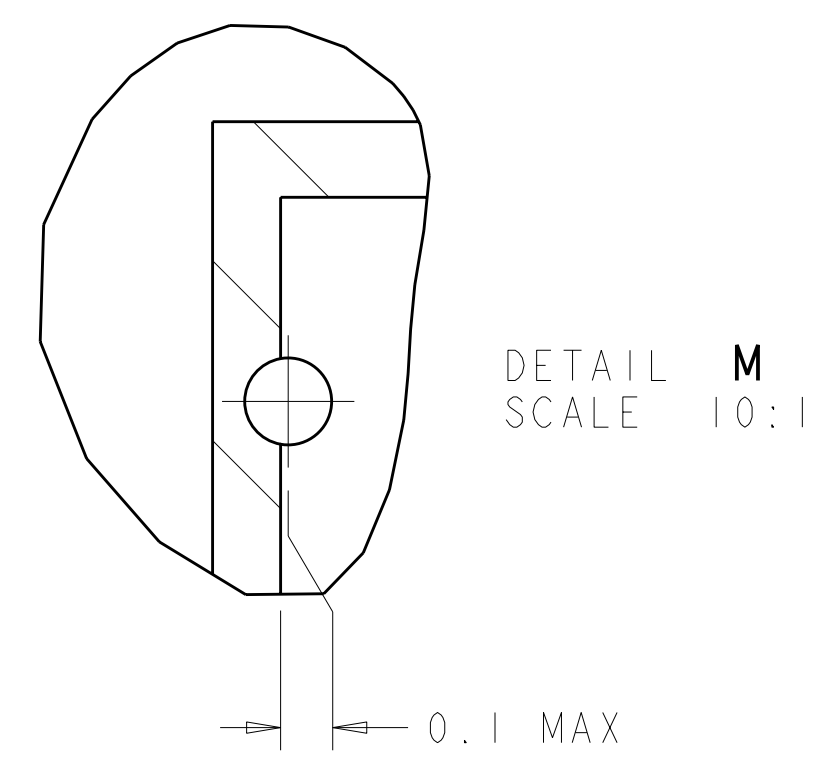
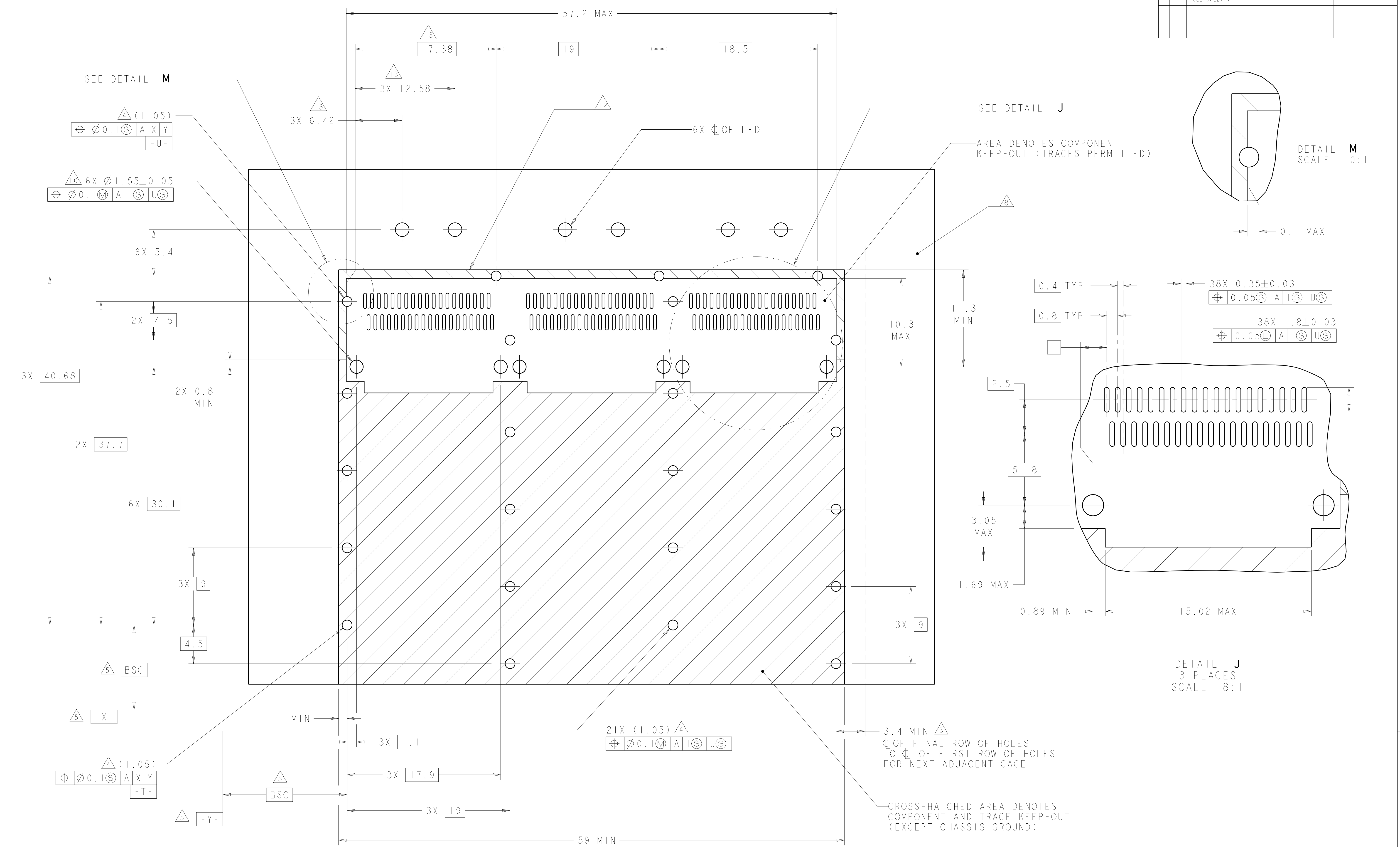
BELLY TO BELLY CONFIGURATION SIMILAR
 TO ONE SIDED EXCEPT WHERE NOTED
 SCALE 3:1



THIS PRODUCT HAS NOT COMPLETED VALIDATION/QUALIFICATION TESTING

<small>THIS DRAWING IS UNPUBLISHED. RELEASED FOR PUBLICATION 2007 BY TYCO ELECTRONICS CORPORATION, ALL RIGHTS RESERVED.</small>		DWN C. VALENTINE 28FEB2008 CHK E. BRIGHT 28FEB2008 APVD E. BRIGHT 28FEB2008	Tyco Electronics Harrisburg, PA 17105-3608
DIMENSIONS: mm 	TOLERANCES UNLESS OTHERWISE SPECIFIED: 0 PLC ± 1 PLC ±0.1 2 PLC ±0.1 3 PLC ±0.013 4 PLC ±0.0001 ANGLES ±	NAME PRODUCT SPEC APPLICATION SPEC WEIGHT CUSTOMER DRAWING	NAME PRODUCT SPEC APPLICATION SPEC WEIGHT CUSTOMER DRAWING
MATERIAL: - FINISH: -		108-2286 114-13218	1X3 CAGE ASSEMBLY, BEHIND BEZEL, W/ LIGHT PIPES AND HEAT SINKS, QSFP SIZE CAGE CODE DRAWING NO A100779C=2057042 SCALE 4:1 SHEET 3 OF 5 REV A

LOC	DIST	REV	DESCRIPTION	DATE	DWN	APVD
GP	00		SEE SHEET 1			



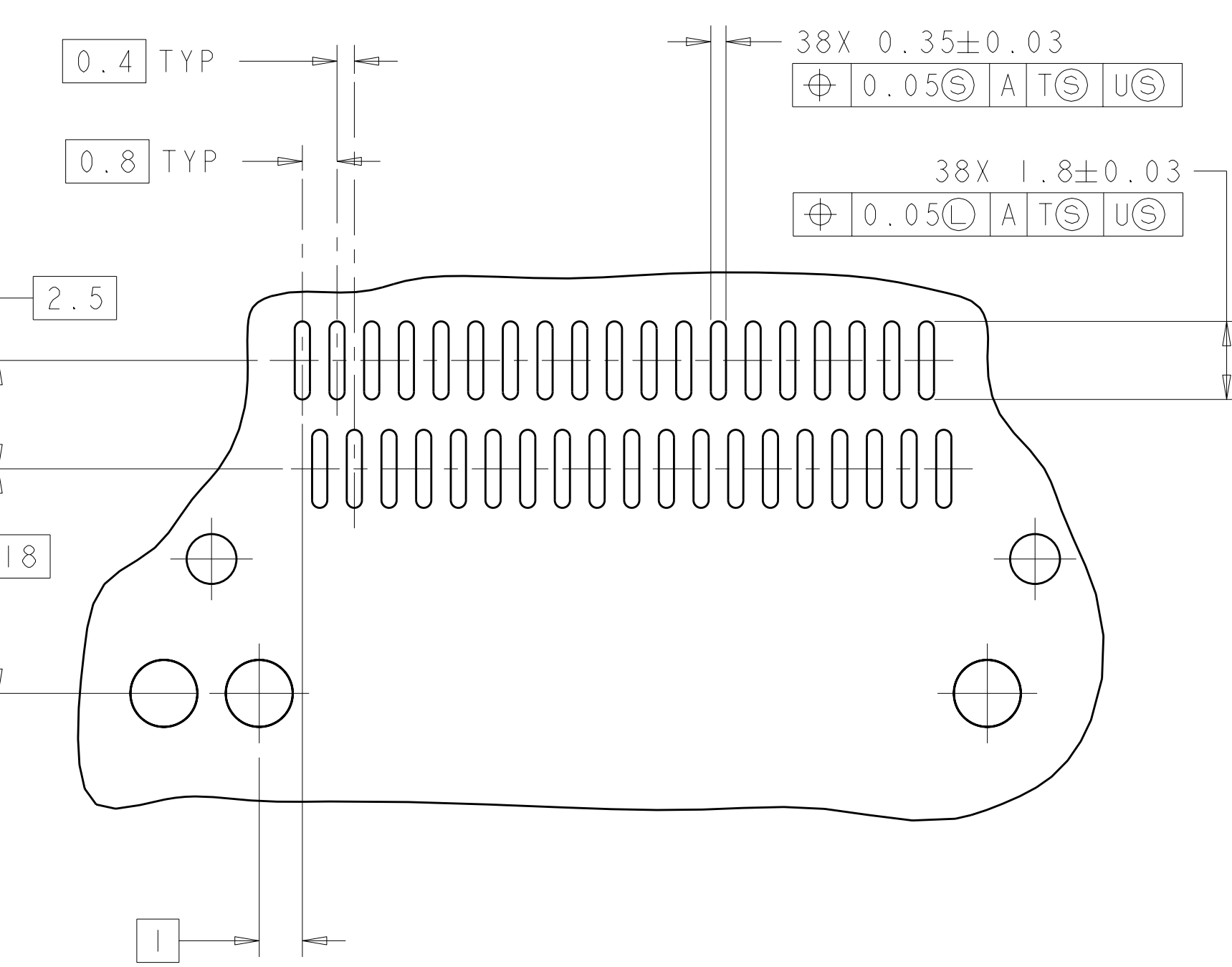
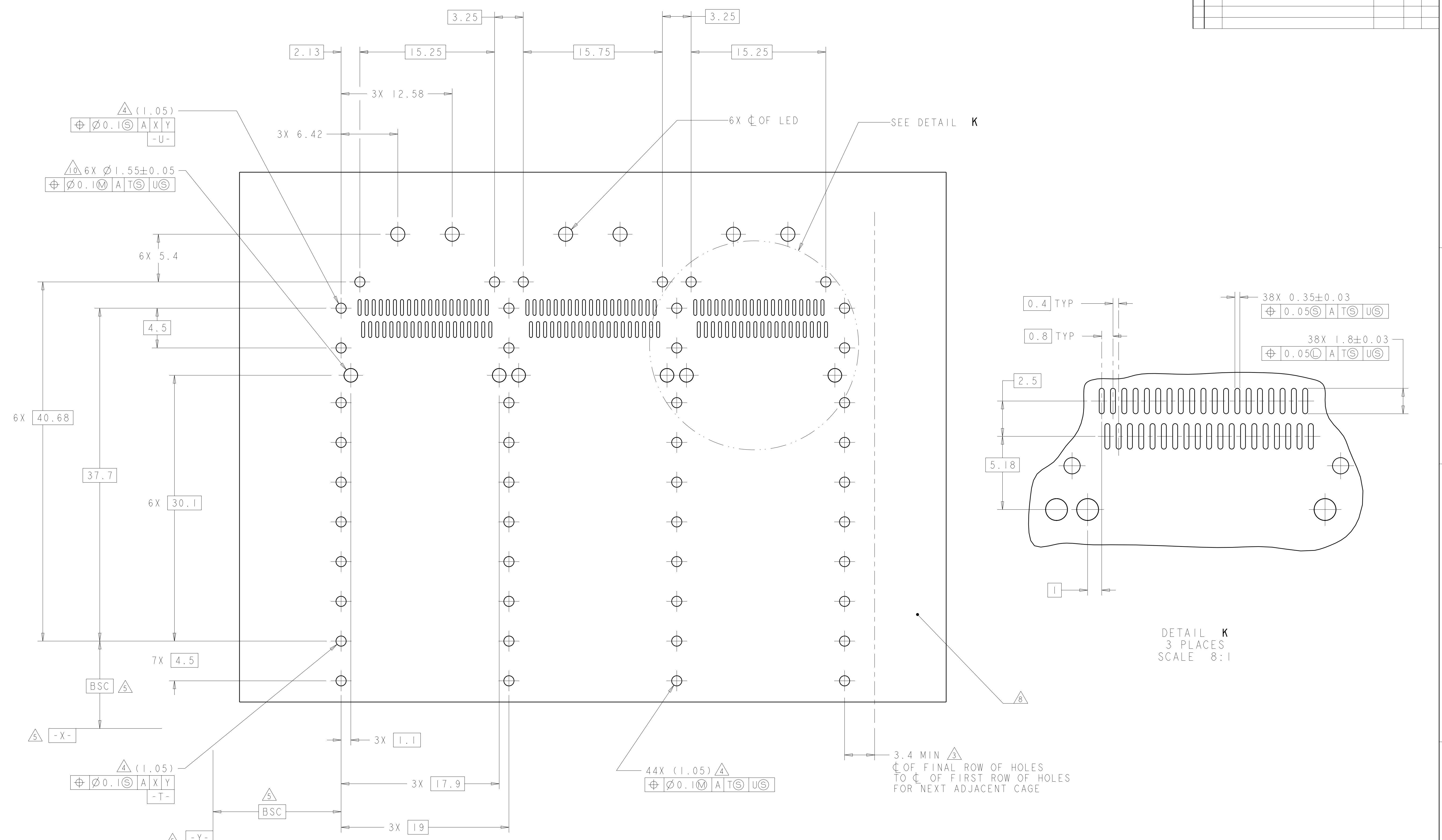
RECOMMENDED PC BOARD LAYOUT
 SINGLE SIDE MOUNT CONFIGURATION
 SCALE 5:1

THIS PRODUCT HAS NOT COMPLETED VALIDATION/QUALIFICATION TESTING

DIMENSIONS: mm		TOLERANCES UNLESS OTHERWISE SPECIFIED: 9 PLC ±.1 1 PLC ±0.1 5 PLC ±0.13 4 PLC ±0.001 ANGLES ±.001		DWN C. VALENTINE 28FEB2008 CHK E. BRIGHT 28FEB2008 APVD E. BRIGHT 28FEB2008		Tyco Electronics Harrisburg, PA 17105-3608	
MATERIAL: - FINISH: -		WEIGHT: -		PRODUCT SPEC: 108-2286 APPLICATION SPEC: 114-13218		NAME: 1X3 CAGE ASSEMBLY, BEHIND BEZEL, W/ LIGHT PIPES AND HEAT SINKS, QSFP SIZE: CAGE CODE DRAWING NO: A100779C=2057042 RESTRICTED TO: -	
CUSTOMER DRAWING				SCALE: 4:1		SHEET: 4 OF 5 REV: A	

LOC	DIST	REV	DATE	BY	APPD
GP	00				

REVISIONS			
REV	DATE	BY	APPD
-	-	-	-
-	-	-	-



DETAIL K
 3 PLACES
 SCALE 8:1

RECOMMENDED PC BOARD LAYOUT
 BELLY TO BELLY CONFIGURATION
 SEE SHEET 4 FOR COMPONENT
 AND TRACE KEEP-OUTS
 SCALE 5:1

THIS PRODUCT HAS NOT COMPLETED VALIDATION/QUALIFICATION TESTING

<small>THIS DRAWING IS UNPUBLISHED. RELEASED FOR PUBLICATION 2007 BY TYCO ELECTRONICS CORPORATION, ALL RIGHTS RESERVED.</small>		DWN C. VALENTINE 28FEB2008 CHK E. BRIGHT 28FEB2008 APVD E. BRIGHT 28FEB2008	Tyco Electronics Harrisburg, PA 17105-3608
DIMENSIONS: mm 	TOLERANCES UNLESS OTHERWISE SPECIFIED: 0 PLC ± 1 PLC ±0.1 2 PLC ±0.1 3 PLC ±0.013 4 PLC ±0.001 ANGLES ±	NAME 1X3 CAGE ASSEMBLY, BEHIND BEZEL, W/ LIGHT PIPES AND HEAT SINKS, QSFP PRODUCT SPEC 108-2286 APPLICATION SPEC 114-13218 WEIGHT CUSTOMER DRAWING	SIZE CAGE CODE DRAWING NO A100779C=2057042 RESTRICTED TO SCALE 4:1 SHEET 5 OF 5 REV A