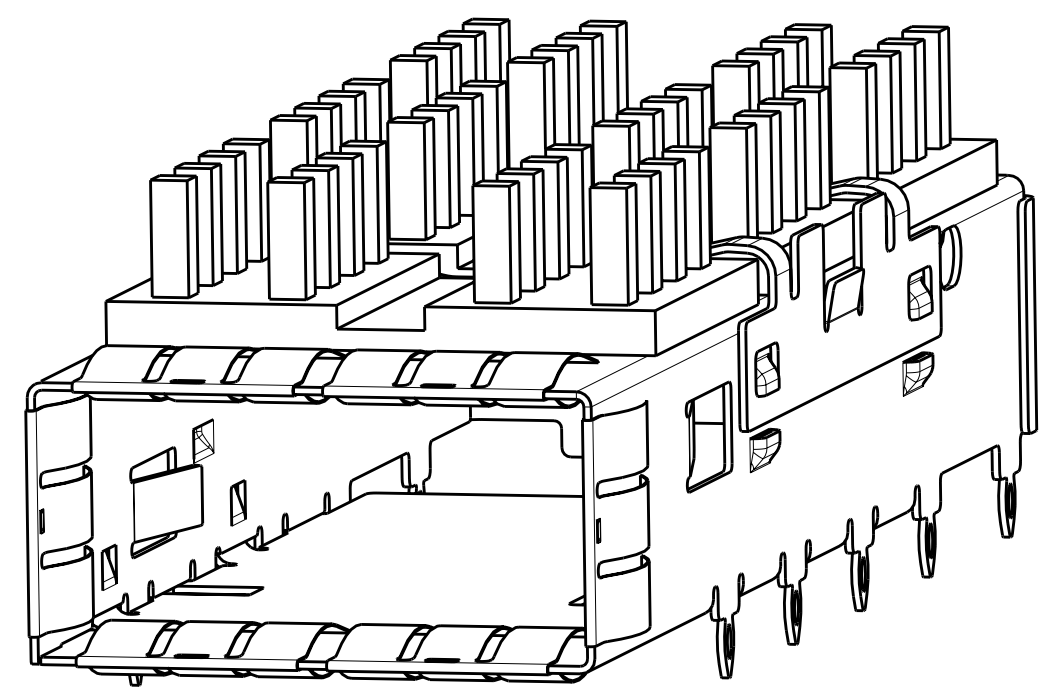
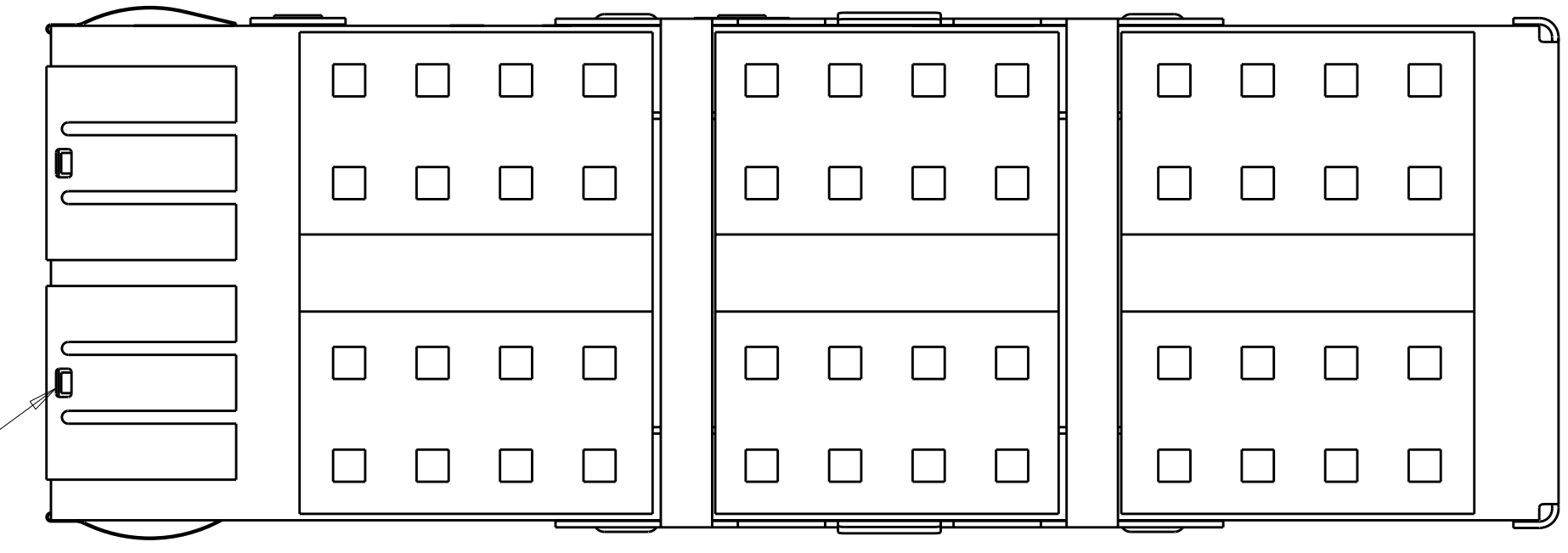


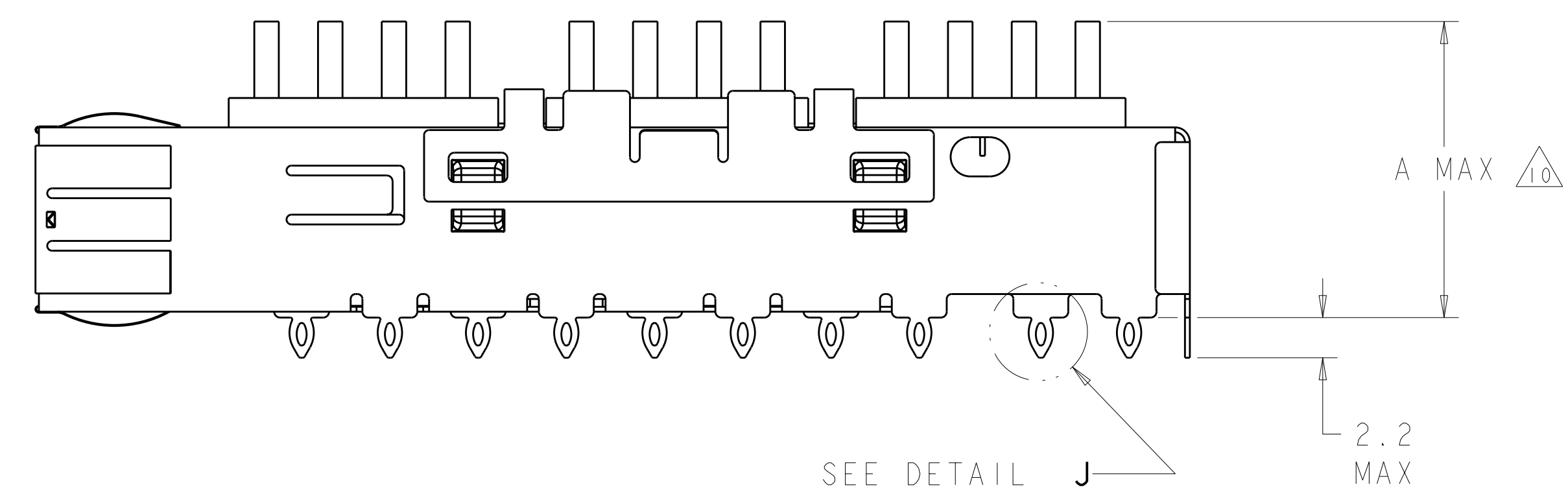
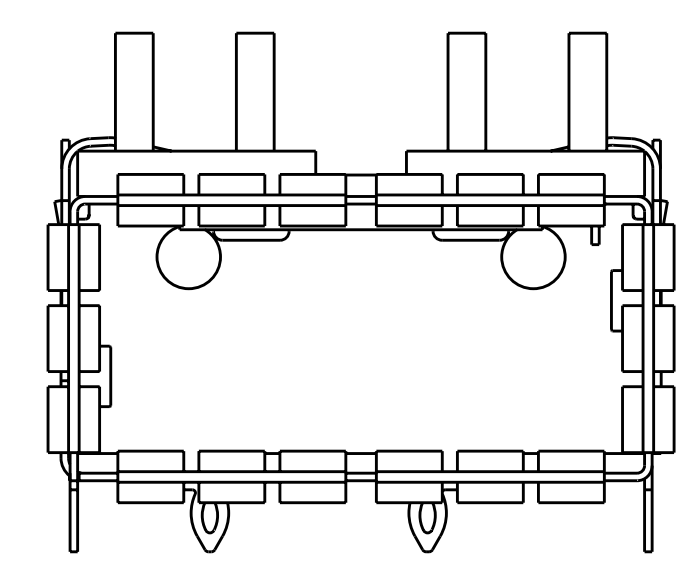
LOC	DIST	REVISIONS			
		REV	DATE	BY	APPD
GP	00	A	RELEASED PER ECO-08-024323	26SEP2008	CJV JRP



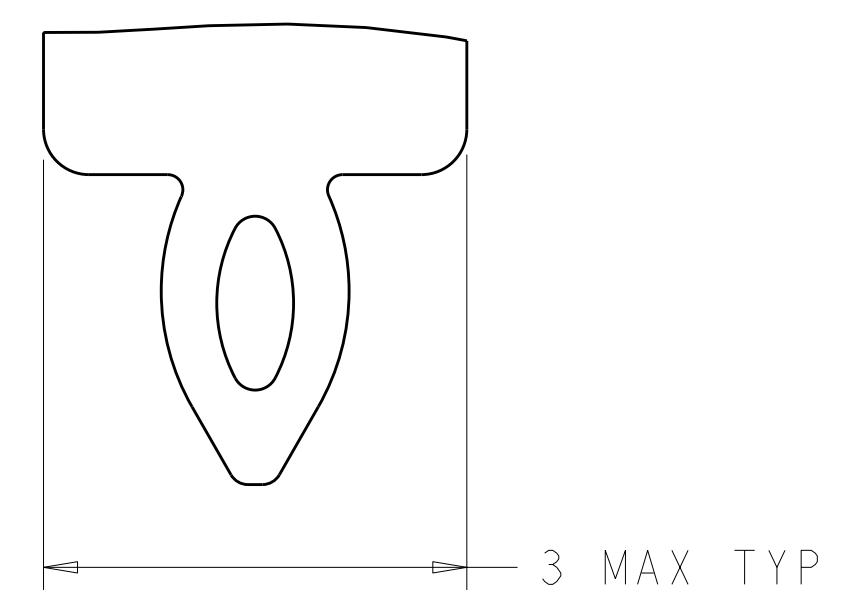
Sn42Bi58 SOLDER
6 PLACES



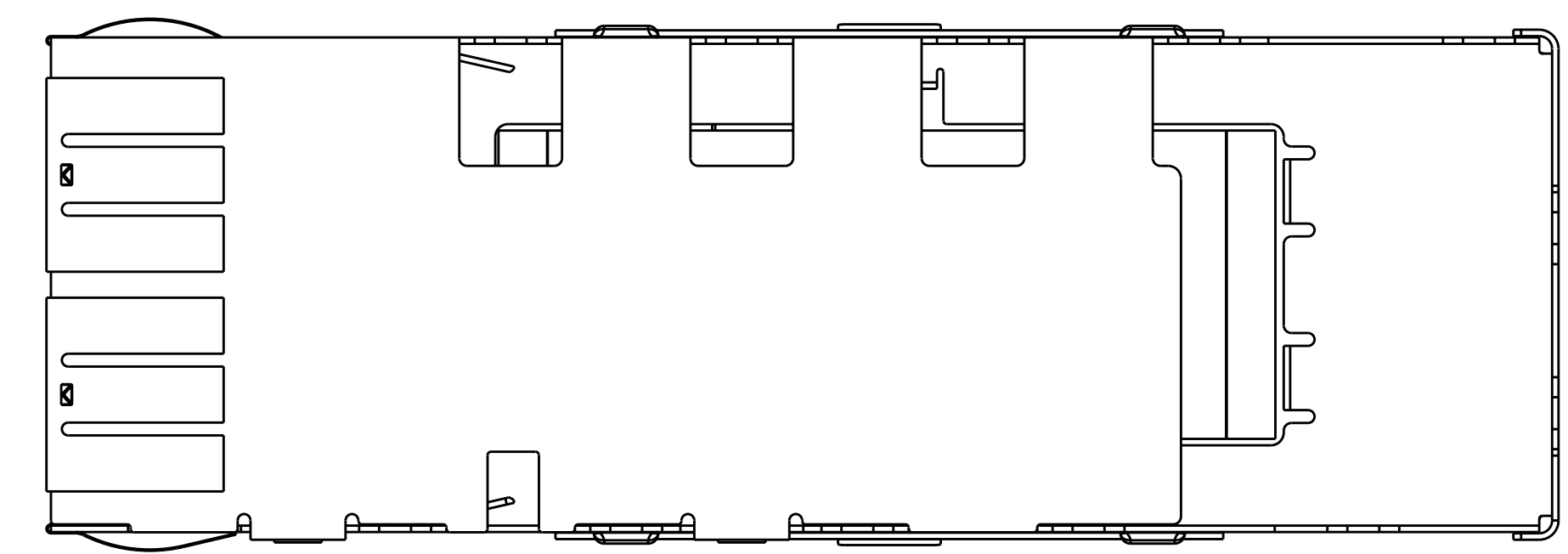
- 1. CAGE MATERIAL: NICKEL SILVER, 0.25 THICK
 HEAT SINK MATERIAL: ALUMINUM
 HEAT SINK CLIP MATERIAL: STAINLESS STEEL
 EMI SPRINGS MATERIAL: COPPER ALLOY
 - 2. MINIMUM PITCH DIMENSION.
 - 3. MATES WITH QSFP MSA COMPATIBLE TRANSCEIVER.
 - 4. REFERENCE APPLICATION SPEC 114-13217 FOR RECOMMENDED DRILL HOLE DIAMETER AND PLATING THICKNESS.
 - 5. DATUMS AND BASIC DIMENSIONS ESTABLISHED BY CUSTOMER.
 - 6. MINIMUM PC BOARD THICKNESS:
 SINGLE SIDED = 1.45mm (shown, pg. 4)
 DOUBLE SIDED = 2.2mm
 - 7. HEATSINK AND CLIP SHIPPED ASSEMBLED TO CAGE ASSEMBLY. CAGE ASSEMBLY MAY BE PRESSED INTO THE PCB AS SHIPPED.
 - 8. DATUM [-A-] IS TOP SURFACE OF HOST BOARD.
 - 9. SURFACE TRACES PERMITTED WITHIN THIS AREA EXCEPT WHERE CAGE STANDOFFS, SHOWN IN DETAIL J, CONTACT PC BOARD.
 - 10. DIMENSION APPLIES WITH MODULE INSTALLED IN THE CAGE.
 - 11. DATE CODE (YYWWD) MARKED ON TOP OF CAGE AND CONCEALED BY HEAT SINK APPLIES TO CAGE ASSEMBLY ONLY.
 - 12. SPRING FINISH: 0.8µm MIN TIN OVER 0.8µm MIN NICKEL. NON-PLATED EDGES PERMISSIBLE.
 HEAT SINK FINISH: 0.076 µm MIN NICKEL.
13. PRODUCT HAS NOT COMPLETED QUALIFICATION TESTING.



SEE DETAIL J



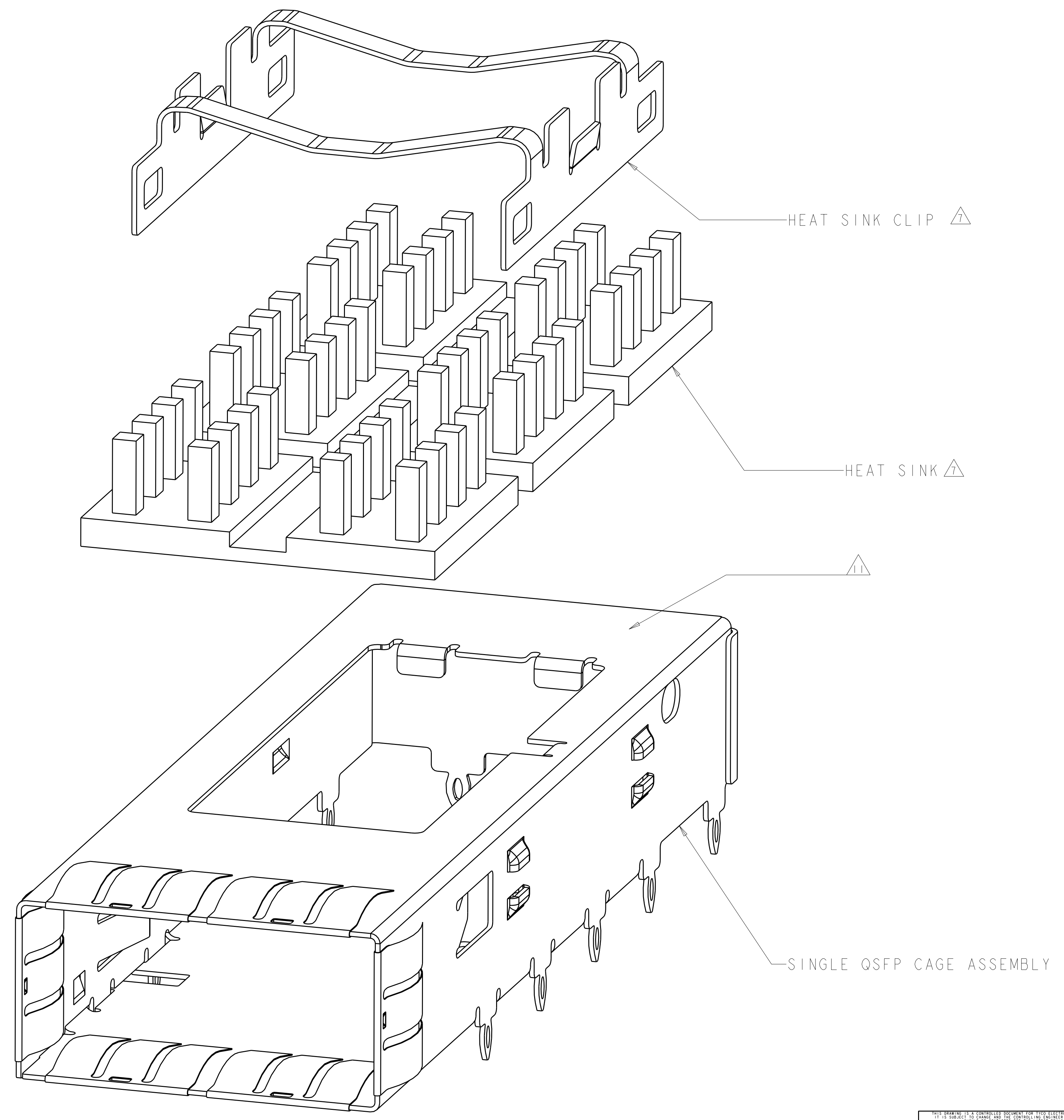
DETAIL J
SCALE 20:1



23.0	NETWORKING HEAT SINK	1888631-3
16.0	SAN HEAT SINK (SHOWN)	1888631-2
13.7	PCI HEAT SINK	1888631-1
A	DESCRIPTION	PART NUMBER

DIMENSIONS: mm 9 PLC ±0.25 1 PLC ±0.13 5 PLC ±0.13 4 PLC ±0.13 ANGLES ±0.13 FINISH 12		TOLERANCES UNLESS OTHERWISE SPECIFIED: 9 PLC ±0.25 1 PLC ±0.13 5 PLC ±0.13 4 PLC ±0.13 ANGLES ±0.13 FINISH 12		DWN B. MCMASTER OTSEP06 CHK E. J. BRIGHT OTSEP06 APVD E. J. BRIGHT OTSEP06 PRODUCT SPEC 108-2286 APPLICATION SPEC 114-13217 WEIGHT - CUSTOMER DRAWING		Tyco Electronics Harrisburg, PA 17105-3608 NAME CAGE ASSEMBLY, THRU BEZEL, QSFP, WITH HEAT SINK SIZE CAGE CODE DRAWING NO. A100779C=1888631 RESTRICTED TO - SCALE 4:1 SHEET 1 OF 4 REV A	
--	--	---	--	---	--	---	--

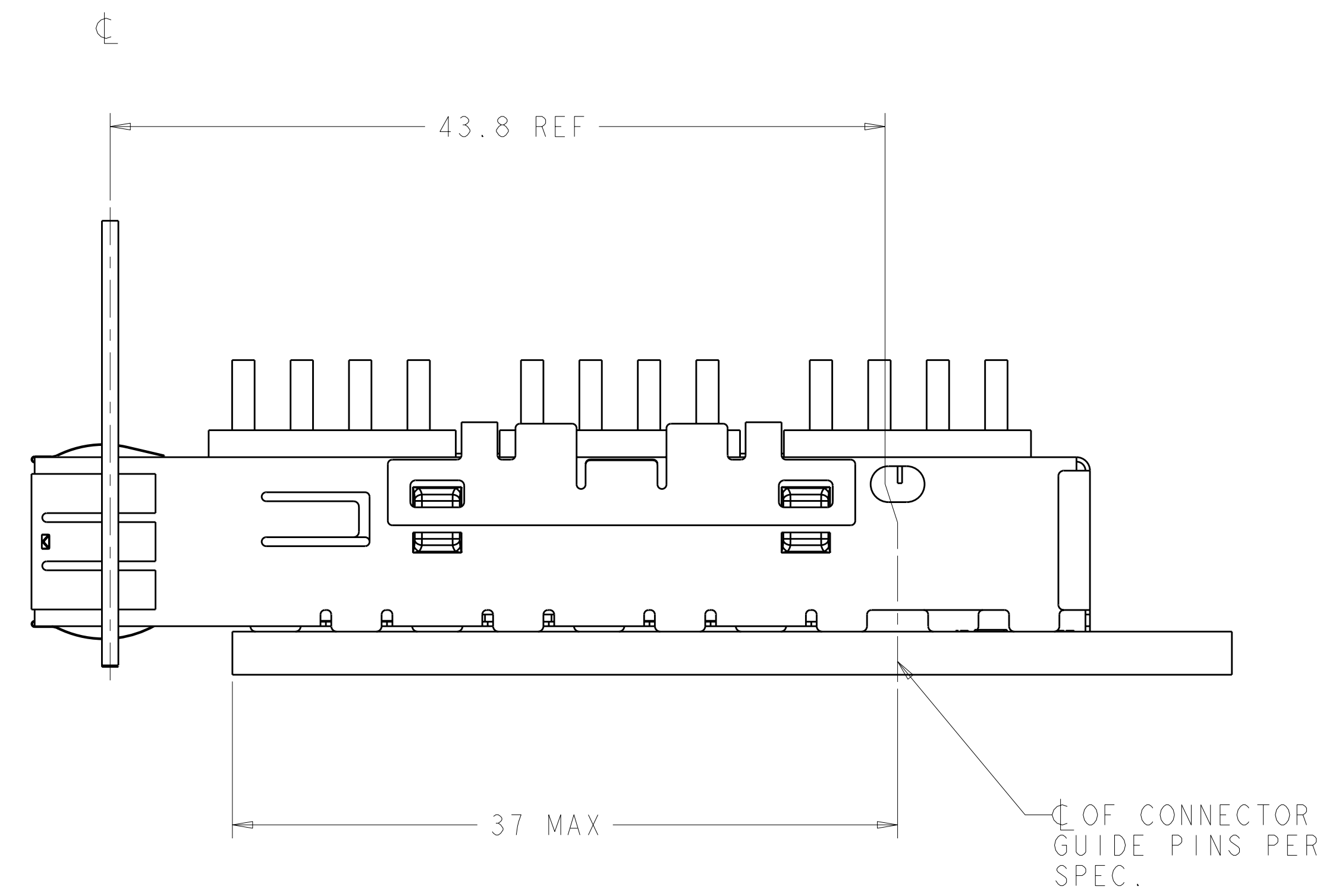
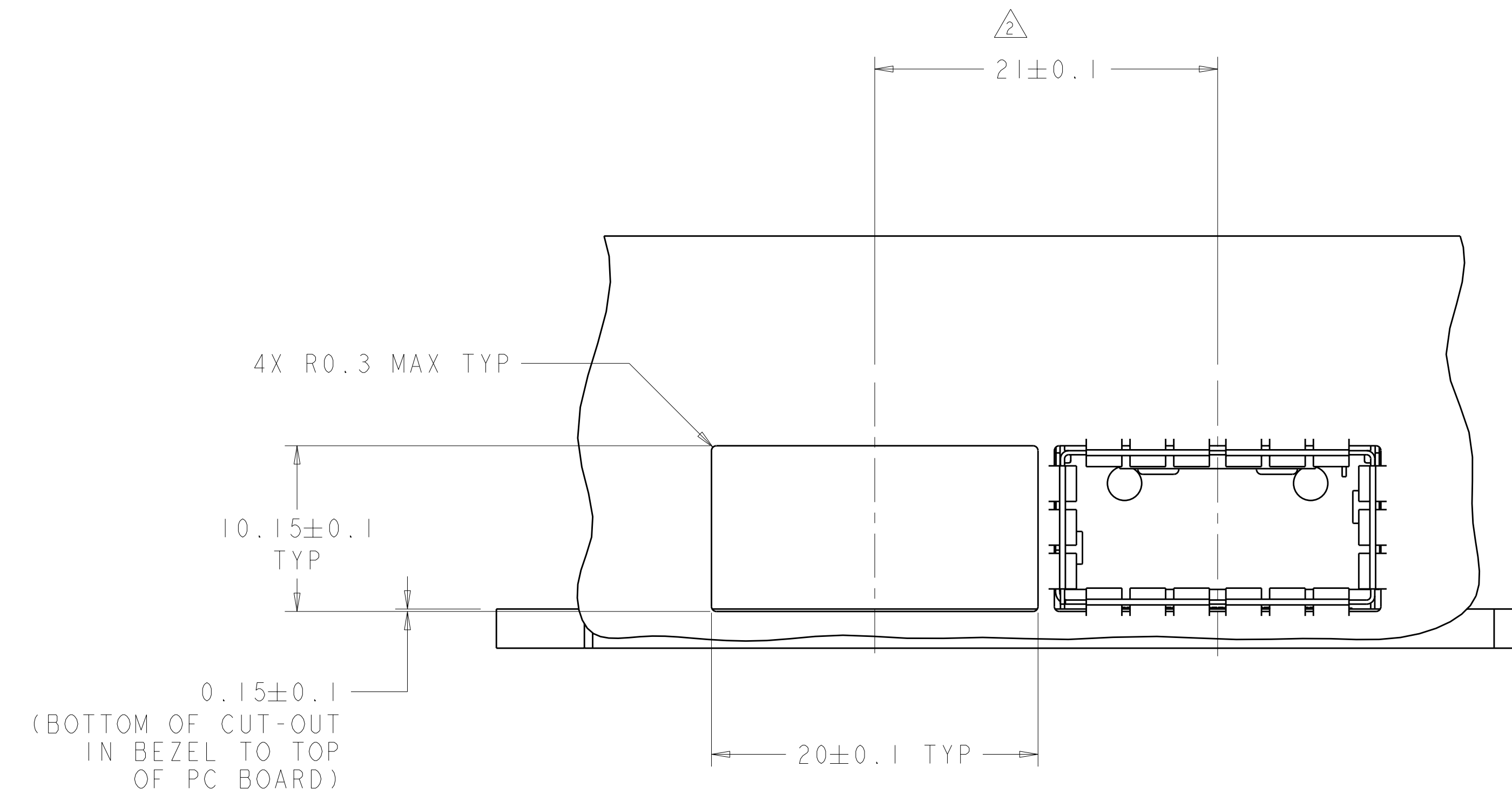
LOC	DIST	REVISIONS					
GP	00	P	LTB	DESCRIPTION	DATE	DWN	APVD
		-	-	SEE SHEET 1		-	-



EXPLODED ASSEMBLY
 SCALE 8:1

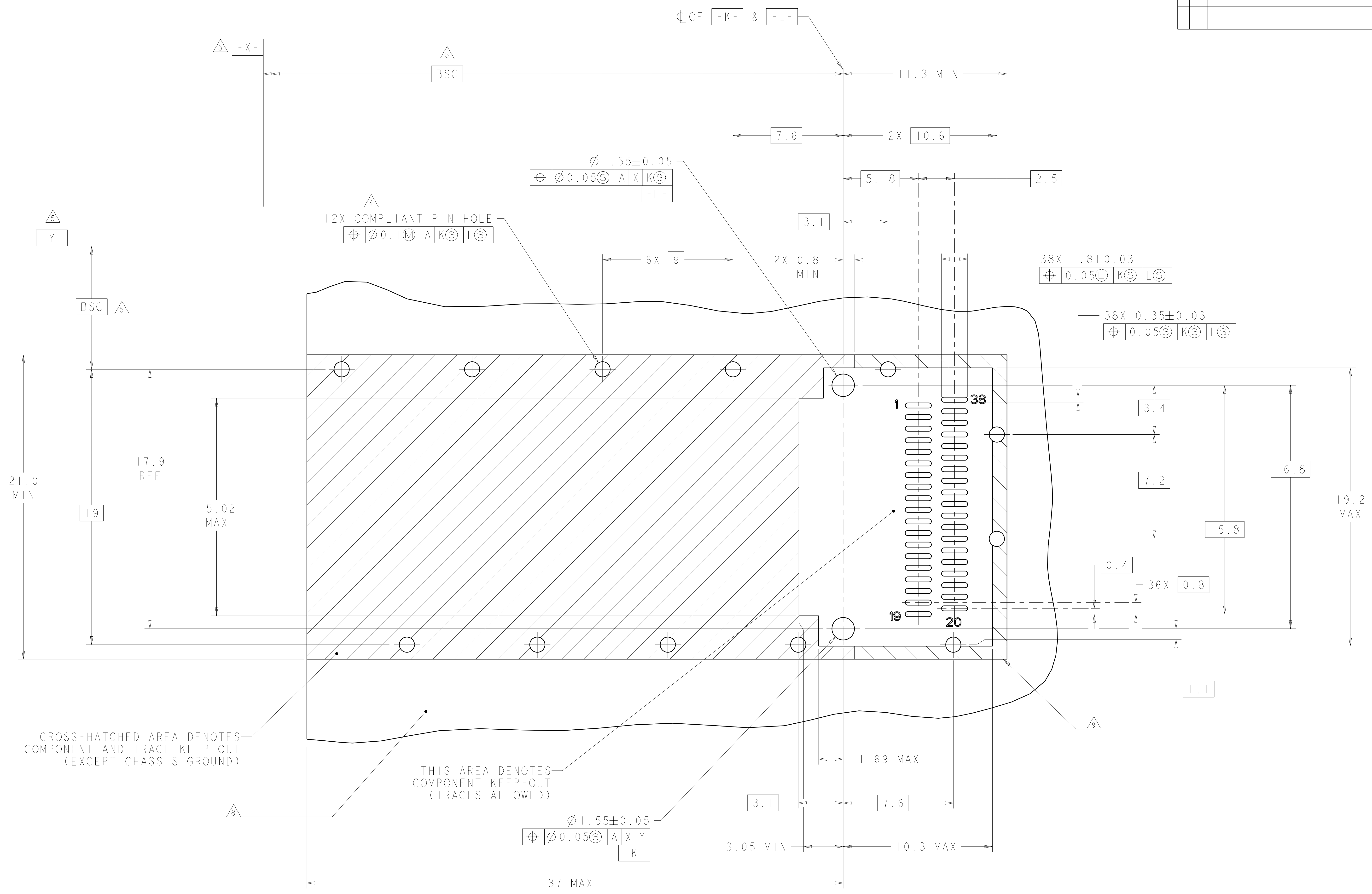
<small>THIS DRAWING IS UNPUBLISHED. RELEASED FOR PUBLICATION 2007. IT IS SUBJECT TO CHANGE WITHOUT NOTICE AND WITHOUT OBLIGATION. SHOULD BE CONTACTED FOR THE LATEST REVISION.</small>		DWN: B. MCMASTER CHK: E. J. BRIGHT APVD: E. J. BRIGHT	DTSEP06 OTSEP06 OTSEP06	Tyco Electronics Harrisburg, PA 17105-3608
DIMENSIONS: mm	TOLERANCES UNLESS OTHERWISE SPECIFIED: 0 PLC ± 1 PLC ±0.25 2 PLC ±0.13 3 PLC ± 4 PLC ± ANGLES ±	PRODUCT SPEC: 108-2286 APPLICATION SPEC: 114-13217	NAME: CAGE ASSEMBLY, THRU BEZEL, QSPF, WITH HEAT SINK SIZE: A CAGE CODE: 100779 DRAWING NO: C-1888631	RESTRICTED TO: -
MATERIAL:	FINISH:	WEIGHT:	CUSTOMER DRAWING	SCALE: 4:1 SHEET 2 OF 4 REV A

LOC	DIST	REVISIONS					
GP	00	P	LTB	DESCRIPTION	DATE	DWN	APVD
		-	-	SEE SHEET 1	-	-	-



DIMENSIONS: mm 		TOLERANCES UNLESS OTHERWISE SPECIFIED: 0 PLC ± 1 PLC ±0.25 2 PLC ±0.13 3 PLC ± 4 PLC ± ANGLES ± FINISH		DWN B. MCMASTER OTSEP06 CHK E. J. BRIGHT OTSEP06 APVD E. J. BRIGHT OTSEP06		Tyco Electronics Harrisburg, PA 17105-3608	
MATERIAL CUSTOMER DRAWING		PRODUCT SPEC 108-2286 APPLICATION SPEC 114-13217		NAME CAGE ASSEMBLY, THRU BEZEL, QSFP, WITH HEAT SINK		SIZE CAGE CODE DRAWING NO RESTRICTED TO A 100779 C-1888631 -	
		WEIGHT -		SCALE 4:1 SHEET 3 OF 4 REV A			

LOC	DIST	REV	DATE	BY	APPD
GP	00				
DESCRIPTION			DATE	BY	APPD
SEE SHEET 1					



RECOMMENDED PCB LAYOUT
 SCALE 8:1

DIMENSIONS: mm 		TOLERANCES UNLESS OTHERWISE SPECIFIED: 9 PLG ± 1 PLG ±0.25 2 PLG ±0.13 3 PLG ± 4 PLG ± ANGLES ± FINISH ±		DWN B. MCMASTER DTSEP06 CHK E. J. BRIGHT OTSEP06 APVD E. J. BRIGHT OTSEP06 NAME CAGE ASSEMBLY, THRU BEZEL, OSFP, WITH HEAT SINK SIZE CAGE CODE DRAWING NO RESTRICTED TO A 100779 C=1888631 WEIGHT CUSTOMER DRAWING		Tyco Electronics Harrisburg, PA 17105-3608 Tyco Electronics Harrisburg, PA 17105-3608 SCALE 4:1 SHEET 4 OF 4 REV A	
-----------------------	--	---	--	--	--	--	--