

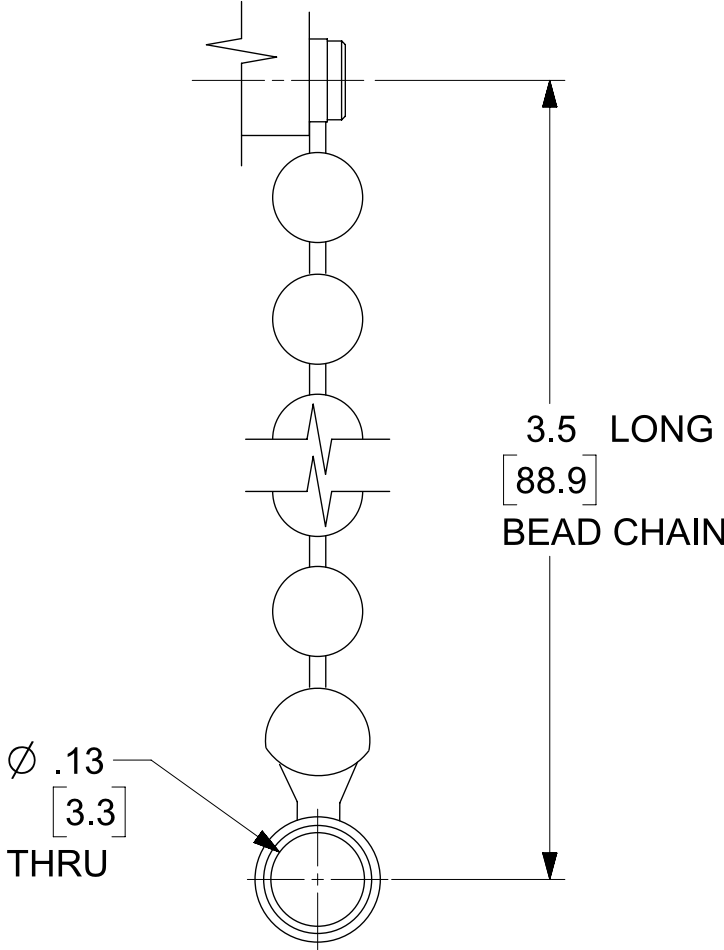
2.92mm TERMINATIONS

DC - 40 GHz
1 WATT

SPECIFICATIONS:

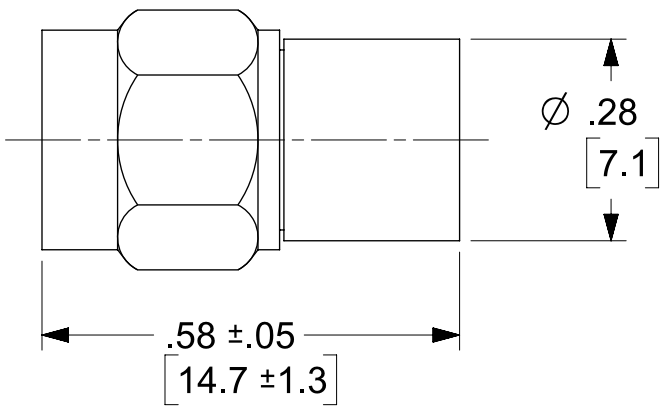
Electrical:
Frequency Range _____ DC – 40 GHz
VSWR _____ 1.20:1 Max.
Input Power _____ 1 Watt Avg. @ 25°C
DERATED LINEARLY TO 0 WATTS @ +125°C
Impedance _____ 50 Ohms
Operating Temp Range _____ -55°C to +125°C
RF Leakage _____ 90 dB Min.

Mechanical:
2.9mm Connectors _____ Passivated Stainless Steel
Mate both Mechanically & Electrically with
all SMA, K* & 3.5mm Series Connectors.
Conductors _____ Gold Plated Beryllium Copper
Bead Chain _____ Passivated Stainless Steel

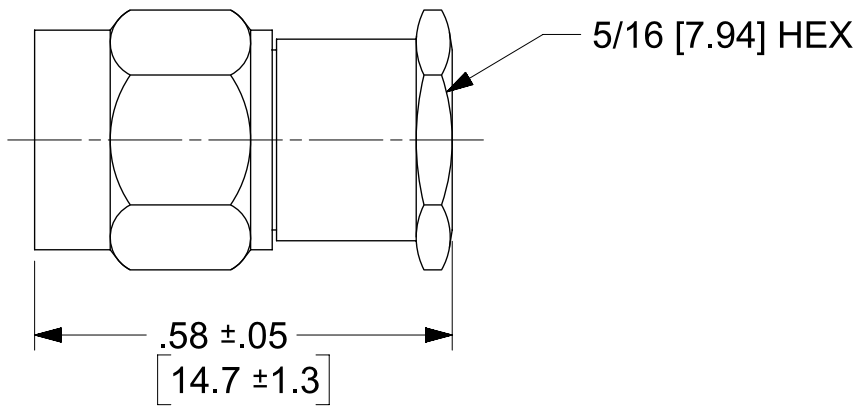


CHAIN DETAIL

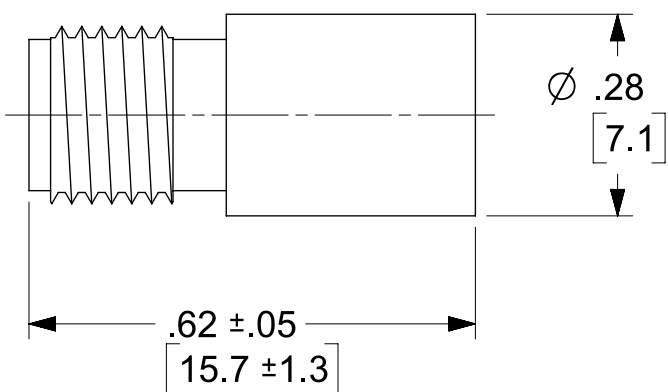
2.9mm Male Connector



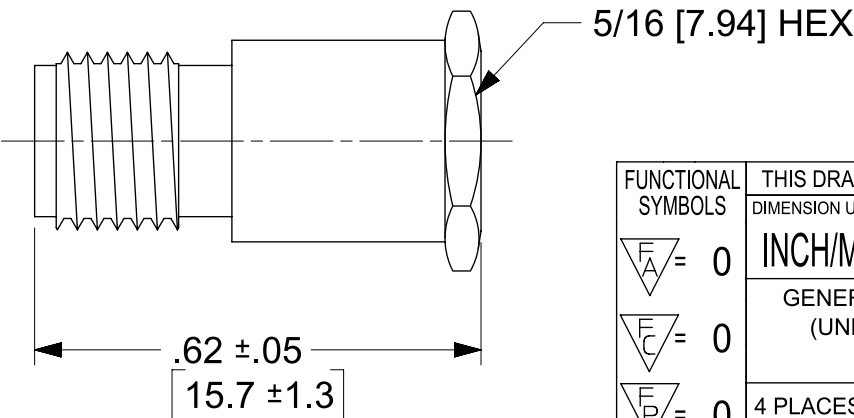
2.9mm Male Connector With Hex



2.9mm Female Connector



2.9mm Female Connector With Hex



40 GHz 1 Watt 2.92mm Terminations	
Molex Part Number	Configuration
0732870630	Male
0732870631	Male w/Chain
0732870632	Male w/Hex
0732870633	Male w/Chain and Hex
0732870634	Female
0732870635	Female w/Chain
0732870636	Female w/Hex
0732870637	Female w/Chain and Hex

FOR CONFIGURATIONS NOT SHOWN
CONTACT FACTORY

FUNCTIONAL SYMBOLS	THIS DRAWING CONTAINS INFORMATION THAT IS PROPRIETARY TO MOLEX ELECTRONIC TECHNOLOGIES, LLC AND SHOULD NOT BE USED WITHOUT WRITTEN PERMISSION																			
<div><div>F</div><div>A</div><div>=</div><div>0</div></div> <div><div>F</div><div>C</div><div>=</div><div>0</div></div> <div><div>F</div><div>P</div><div>=</div><div>0</div></div> <div>DIVISIONAL SYMBOLS</div>	DIMENSION UNITS		SCALE		CURRENT REV DESC: RELEASED			<div>molex</div>												
	INCH/MM		NTS																	
	GENERAL TOLERANCES (UNLESS SPECIFIED)																			
		MM	INCH																	
	4 PLACES		±	±																
	3 PLACES		±	±																
	2 PLACES		±	±																
1 PLACE		±	±	STATUS: Production DRWN: Kevin Tagan 2024-06-26 CHK'D: Les Meier 2024-06-27 APPR: James Borrelli 2024-06-27			PRODUCT CUSTOMER DRAWING													
0 PLACES		±	±																	
ANGULAR TOL ± 0.5°							THIRD ANGLE PROJECTION		DRAWING		SERIES		DOCUMENT NUMBER		DOC TYPE		DOC PART		REVISION	
DRAFT WHERE APPLICABLE MUST REMAIN WITHIN DIMENSIONS									C-SIZE		73287		732870630		PSD		000		A	
										MATERIAL NUMBER		CUSTOMER				SHEET NUMBER				
										SEE TABLE		GENERAL MARKET				1 OF 1				

*K is a trademark of Wiltron Corp.