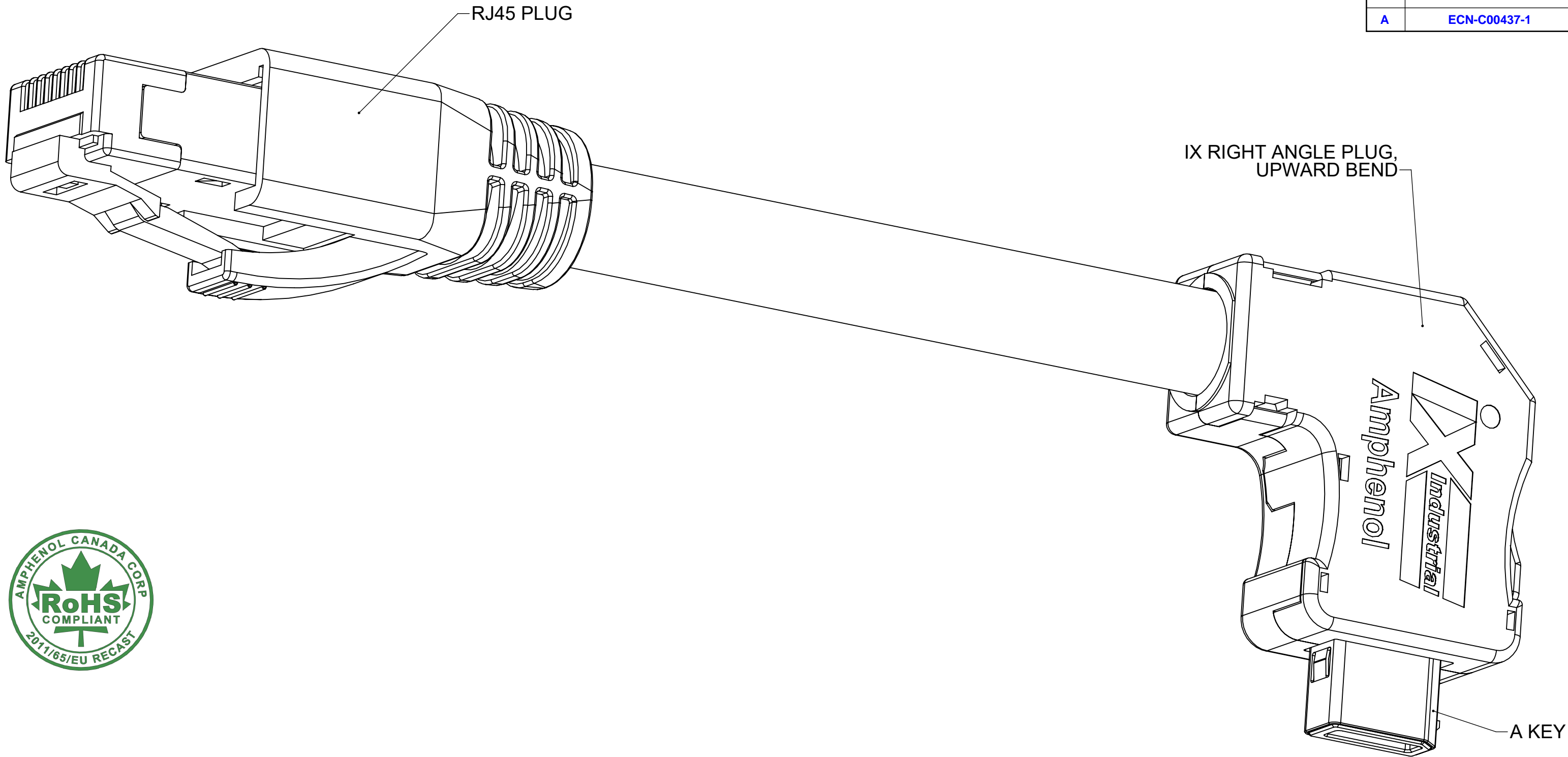


REVISIONS				
REV	DESCRIPTION	DATE	GUARDIAN	APPROVED
-	-	-	-	-
A	ECN-C00437-1	DEC20/24	B. COPPING	K. LAMBIE



ORDERING CODE: **N D 9 - A C J X - XX A H**

SERIES, IX INDUSTRIAL
ETHERNET

TYPE A KEY FOR ETHERNET

CABLE

CABLE ASSY INCLUDING
RIGHT ANGLE IX PLUG

PLATING FOR IX MATING AREA

- 1 = GOLD FLASH
2 = 0.20µm (8µ") GOLD
3 = 0.76µm (30µ") GOLD
4 = 1.27µm (50µ") GOLD
7 = 0.76µm (30µ") PALLADIUM
NICKEL WITH GOLD FLASH

CABLE END PLUGS - UPWARD BEND ONE END,
STRAIGHT RJ45 OTHER END
8 WIRE

CABLE LENGTHS (DIMENSION 'A')	
20 TO 99	LENGTH IN CM
A0 TO A9	1 METER + 0 TO 9 DECIMETERS
B0 TO B9	2 METERS + 0 TO 9 DECIMETERS
C0 TO C9	3 METERS + 0 TO 9 DECIMETERS
D0 TO D9	4 METERS + 0 TO 9 DECIMETERS
E0 TO E9	5 METERS + 0 TO 9 DECIMETERS
F0 TO F9	6 METERS + 0 TO 9 DECIMETERS
G0 TO G9	7 METERS + 0 TO 9 DECIMETERS
H0 TO H9	8 METERS + 0 TO 9 DECIMETERS
J0 TO J9	9 METERS + 0 TO 9 DECIMETERS
K0 TO K9	10 METERS + 0 TO 9 METERS
L0 TO L9	20 METERS + 0 TO 9 METERS
M0 TO M9	30 METERS + 0 TO 9 DECAMETERS

CABLE LENGTH ORDERING CODE EXAMPLES:
75cm = 75 6.3m = F3 25m = L5 80m = M5

NOTES:

- MATERIAL: RoHS COMPLIANT PER EU DIRECTIVE 2011/65/EU AND AMENDMENTS.
 - SHIELD: COPPER ALLOY OR STAINLESS STEEL, NICKEL PLATED
 - INSERTS, PLUG COVER & BOOT: HIGH TEMPERATURE RESISTANT ENGINEERING THERMOPLASTIC, UL94V-0, BLACK
 - RJ45 HOUSING: CLEAR POLYCARBONATE
 - CONTACTS: COPPER ALLOY PLATED WITH GOLD OR PALLADIUM-NICKEL (SEE ORDERING CODE) OVER 1.27µm (50µ") MINIMUM NICKEL ON THE MATING AREA, RJ45 CONTACTS 0.38µm (15µ")
 - CABLE: COPPER CONDUCTOR 26 AWG, 7 STRANDS, PE INSULATION DIA 0.95 TO 1.05mm (.037 TO .041"), METAL FOIL WRAPPED TWISTED PAIRS, OVERALL TIN PLATED BRAID, PVC JACKET DIA 6.3 TO 7.2mm (.244 TO .283")
- DESIGNED TO CONFORM TO REQUIREMENTS OF IEC 61076 PART 3-124 SPECIFICATION. THE TYPE A KEY FEATURE SHOWN IS INTENDED FOR USE WITH ETHERNET APPLICATIONS, EITHER 10/100 MBIT/S OR 1 TO 10 GBIT/S (CAT 5e, 6 & 6A).
- CURRENT RATING: 1.5 AMPERES, VOLTAGE RATING: 50V AC rms OR 60V DC
- OPERATING TEMPERATURE -40° TO +80°C.
- DIELECTRIC WITHSTANDING VOLTAGE: 500V DC
- INSULATION RESISTANCE: 500 MEGOHMS MINIMUM.
- MATING & UNMATING FORCE: 25N (5.6 lbf) MAXIMUM.

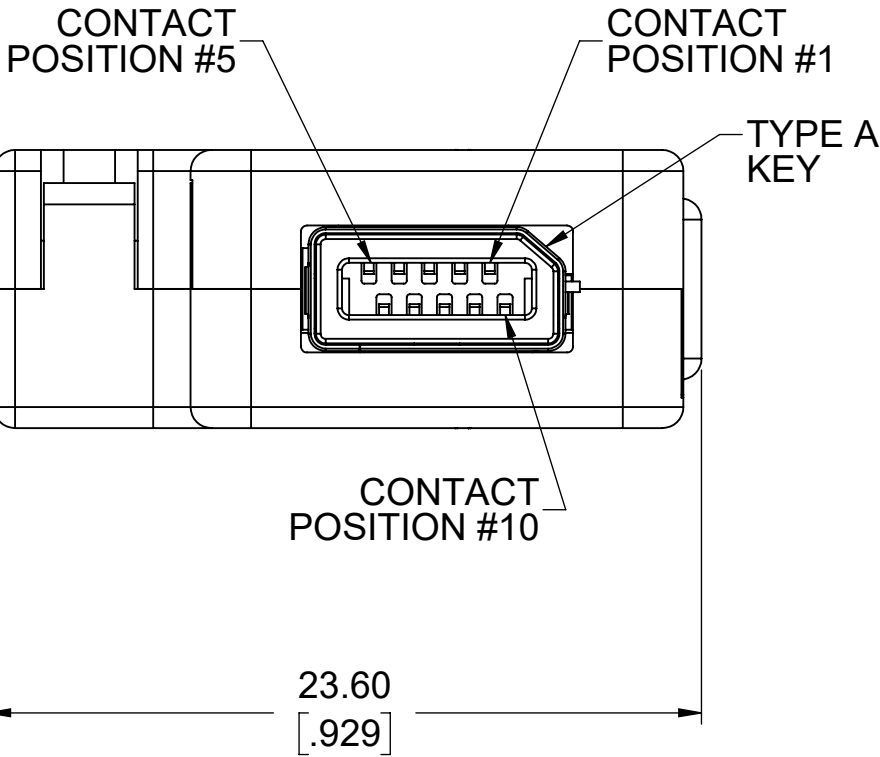
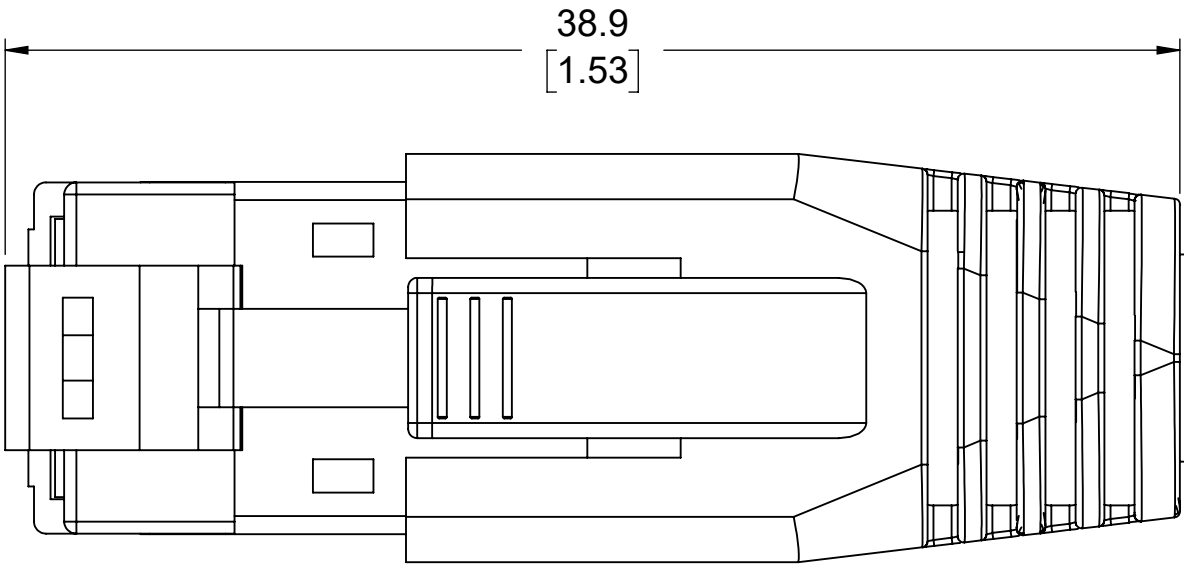
UNLESS SPECIFIED OTHERWISE	DRAWN B. COPPING	DEC20/24
PRIMARY UNITS MILLIMETRES	CHECKED -	-
SECONDARY INCHES	M.E. APP'D -	-
REFERENCE IN PARENTHESES	Q.A. APP'D -	-
GENERAL TOLERANCES	DWG APP'D K. LAMBIE	DEC20/24
1 DECIMAL PLACE	ENG NO.	
2 DECIMAL PLACES	RELEASE STATE RELEASED	
3 DECIMAL PLACES	THIRD ANGLE PROJECTION	DO NOT SCALE DRAWING
ANGULAR DEGREES		

Amphenol Canada Corp.
Commercial Products

IX INDUSTRIAL ETHERNET CABLE, A KEY,
UPWARD RIGHT ANGLE PLUG &
STRAIGHT RJ45 PLUG, VARIOUS
LENGTHS, RoHS COMPLIANT

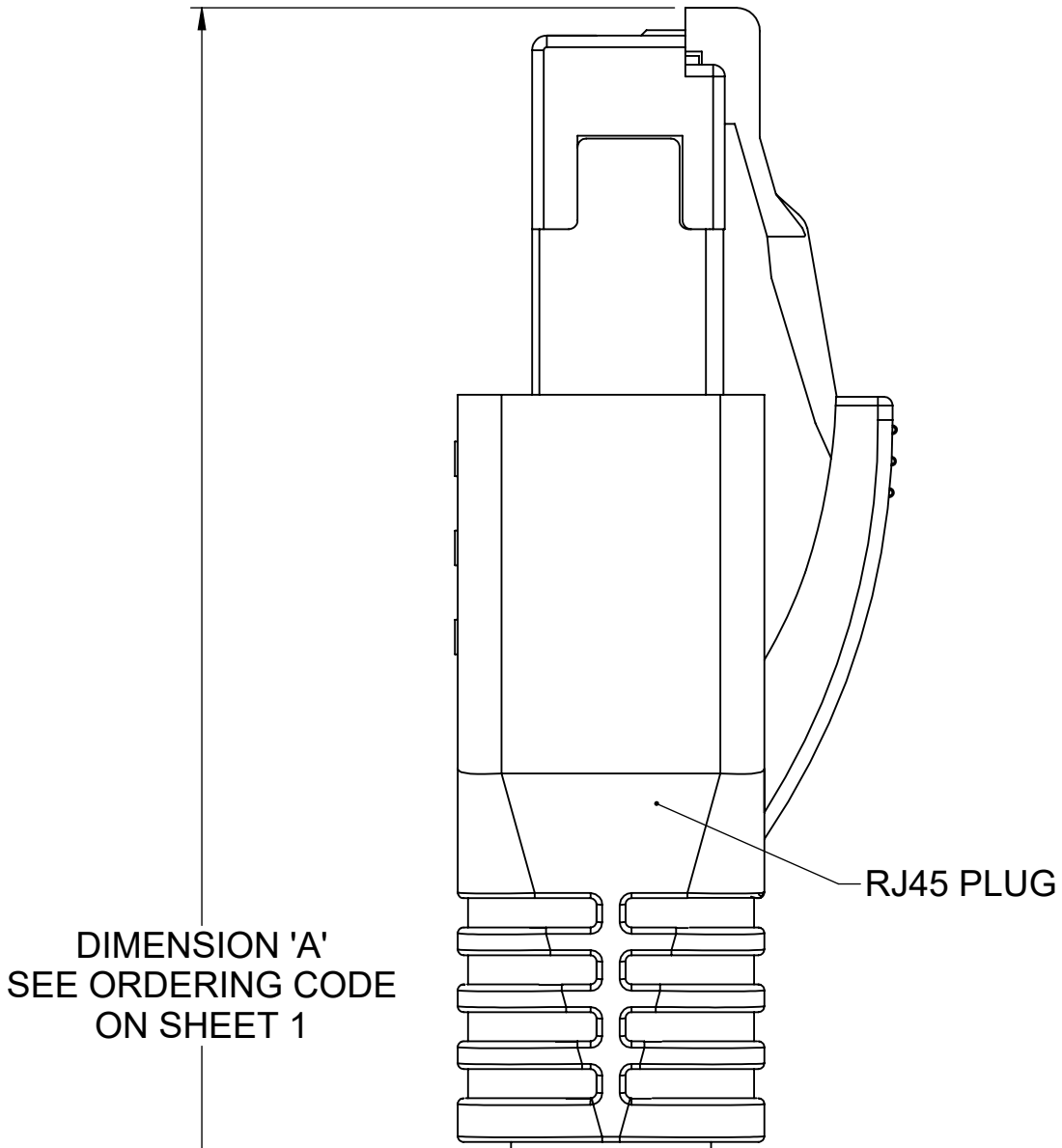
DWG. NO.	REV A
P-ND9-ACJX-XXAH	
CODE ID NO. 03554	DWG SIZE: C SCALE: 4:1 SHEET 1 OF 2

REVISIONS				
REV	DESCRIPTION	DATE	GUARDIAN	APPROVED
-	-	-	-	-
A	ECN-C00437-1	DEC20/24	B. COPPING	K. LAMBIE

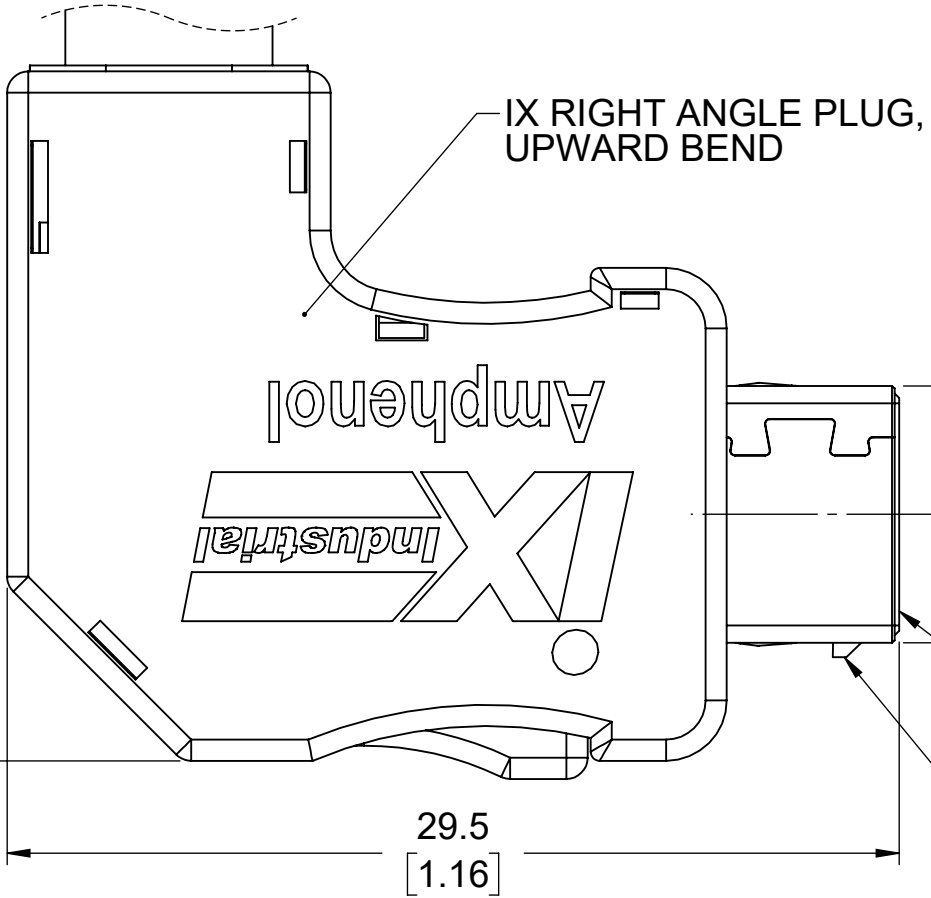


CONNECTOR PIN ASSIGNMENT				
POSITION NUMBER	PIN ASSIGNMENT 10 OR 100 MBit/S ETHERNET	PIN ASSIGNMENT 1, 2.5, 5 OR 10 GBit/S ETHERNET	WIRE COLOUR (TIA/EIA 568B)	RJ45 POSITION NUMBER
1	TX +	BI_DA +	WHITE/ORANGE	1
2	TX -	BI_DA -	ORANGE	2
3	NOT USED	-	-	-
4	NOT USED	BI_DC +	BLUE	4
5	NOT USED	BI_DC -	WHITE/BLUE	5
6	RX +	BI_DB +	WHITE/GREEN	3
7	RX -	BI_DB -	GREEN	6
8	NOT USED	-	-	-
9	NOT USED	BI_DD +	WHITE/BROWN	7
10	NOT USED	BI_DD -	BROWN	8

NOTE:
ND9 CONTACTS #3 & #8
ARE NOT CONNECTED.
TWISTED PAIRS FOR ND9
POSITIONS 1/2, 4/5,
6/7 & 9/10.



DIMENSION 'A'
SEE ORDERING CODE
ON SHEET 1



UPWARD BEND DEFINED AS FOLLOWS:
WITH POSITION 1 AT THE BOTTOM OF
THE MATING AREA, CABLE IS BENT
UPWARD (TOWARD POSITION 5).
CONSULT WITH AMPHENOL FOR
DOWNWARD BEND OPTION.

POSITIONS 1 & 10 AT
BOTTOM OF MATING
AREA IN THIS VIEW.

SINGLE LATCH LOCK
FOR RIGHT ANGLE
PLUG



UNLESS SPECIFIED OTHERWISE	DRAWN B. COPPING	DEC20/24
PRIMARY UNITS MILLIMETRES	CHECKED -	-
SECONDARY INCHES	M.E. APP'D -	-
REFERENCE IN PARENTHESES	Q.A. APP'D -	-
GENERAL TOLERANCES	DWG APP'D K. LAMBIE	DEC20/24
1 DECIMAL PLACE	ENG NO.	
2 DECIMAL PLACES	RELEASE STATE RELEASED	
3 DECIMAL PLACES	THIRD ANGLE PROJECTION	DO NOT SCALE DRAWING

Amphenol Canada Corp.
Commercial Products

IX INDUSTRIAL ETHERNET CABLE, A KEY,
UPWARD RIGHT ANGLE PLUG &
STRAIGHT RJ45 PLUG, VARIOUS
LENGTHS, RoHS COMPLIANT

DWG. NO.	REV A
P-ND9-ACJX-XXAH	
CODE ID NO. 03554	DWG SIZE: C
SCALE: 4:1	SHEET 2 OF 2